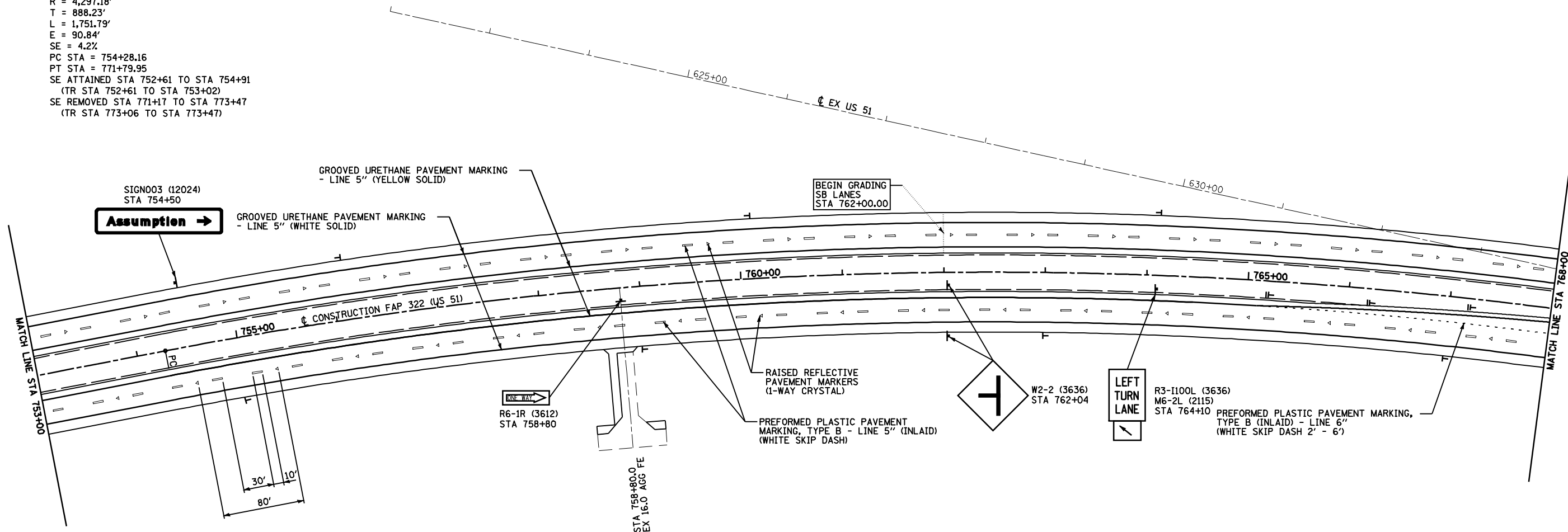


F.A.P. RTE.	SECTION	COUNTY	TOTAL SHEETS	SHEET NO.
322	11-12	CHRISTIAN	284	126
STA.		TO STA.		
FED. ROAD DIST. NO.		ILLINOIS	FED. AID PROJECT	

FAP 322 CURVE \*M3 DATA:  
 PI STA = 763+16.39  
 $\Delta = 23^\circ 21' 26''$  (RT)  
 $D = 1^\circ 20' 00''$   
 $R = 4,297.18'$   
 $T = 888.23'$   
 $L = 1,751.79'$   
 $E = 90.84'$   
 $SE = 4.2\%$   
 PC STA = 754+28.16  
 PT STA = 771+79.95  
 SE ATTAINED STA 752+61 TO STA 754+91  
 (TR STA 752+61 TO STA 753+02)  
 SE REMOVED STA 771+17 TO STA 773+47  
 (TR STA 773+06 TO STA 773+47)



SIGN003 (12024)  
 STA 754+50  
**Assumption** →

GROOVED URETHANE PAVEMENT MARKING - LINE 5" (YELLOW SOLID)  
 GROOVED URETHANE PAVEMENT MARKING - LINE 5" (WHITE SOLID)

BEGIN GRADING  
 SB LANES  
 STA 762+00.00

R6-1R (3612)  
 STA 758+80

RAISED REFLECTIVE PAVEMENT MARKERS (1-WAY CRYSTAL)

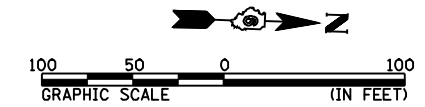
PREFORMED PLASTIC PAVEMENT MARKING, TYPE B - LINE 5" (INLAID) (WHITE SKIP DASH)

W2-2 (3636)  
 STA 762+04

LEFT TURN LANE

R3-1100L (3636)  
 M6-2L (2115)  
 STA 764+10  
 PREFORMED PLASTIC PAVEMENT MARKING, TYPE B (INLAID) - LINE 6" (WHITE SKIP DASH 2' - 6')

STA 758+80.0  
 EX 16.0 AGG FE



REVISIONS	
NAME	DATE

ILLINOIS DEPARTMENT OF TRANSPORTATION  
 SIGNING & STRIPING PLAN  
 STA 753+00 TO STA 768+00  
 FAP 322 (US 51)  
 SECTION 11-12  
 CHRISTIAN COUNTY

SCALE: 1"=50'  
 DATE: 8/22/06  
 DRAWN BY: BGI  
 CHECKED BY: SEB

DELINEATOR SYMBOLS:  
 — - SINGLE  
 = - DOUBLE

Mo-15-2018 12:28:20PM

S:\FILE