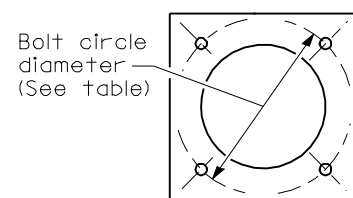


F.A.P. RTE.	SECTION	COUNTY	TOTAL SHEETS	SHEET NO.
322	11-12	CHRISTIAN	284	134
STA.		TO STA.		
FED. ROAD DIST. NO.		ILLINOIS FED. AID PROJECT		

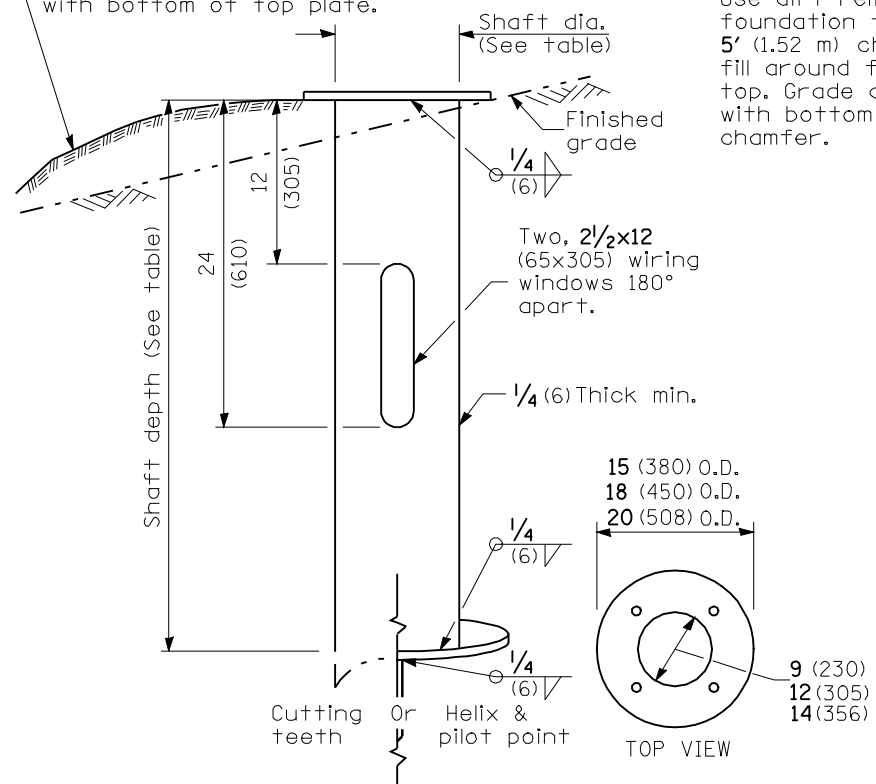
LIGHT POLE MOUNTING HEIGHT	BOLT CIRCLE DIAMETER	METAL FOUNDATION			CONCRETE FOUNDATION		
		SHAFT DIAMETER	SHAFT DEPTH	TOP PLATE (min)	SHAFT DIAMETER	SHAFT DEPTH	ANCHOR ROD LENGTH ①
< 30' (9.1 m)	11 1/2 (292)	8 5/8 (220)	6' (1.83 m)	12 x 12 x 1 (300 x 300 x 25)	24 (610)	5'-0" (1.52 m)	4'-9" (1.45 m)
31'-35' (9.4 m - 10.7 m)	11 1/2 (292)	8 5/8 (220)	6' (1.83 m)	12 x 12 x 1 (300 x 300 x 25)	24 (610)	5'-6" (1.67 m)	5'-3" (1.60 m)
36'-40' (10.9 m - 12.2 m)	15 (381)③	8 5/8 (220)	6' (1.83 m)②	15 x 15 x 1 1/4 (375 x 375 x 31)	30 (762)	6'-0" (1.83 m)	5'-9" (1.75 m)
41'-45' (12.5 m - 13.7 m)	15 (381)③	8 5/8 (220)	6' (1.83 m)②	15 x 15 x 1 1/4 (375 x 375 x 31)	30 (762)	6'-6" (1.98 m)	6'-3" (1.90 m)
46'-50' (14.0 m - 15.2 m)	15 (381)③	8 5/8 (220)	8' (2.44 m)	15 x 15 x 1 1/4 (375 x 375 x 31)	30 (762)	7'-0" (2.13 m)	6'-9" (2.00 m)

- ① Length does not include 4 (100) hook.
- ② 8 5/8 x 8'-0" (220 x 2.44 m) for twin luminaires.
- ③ Use the maximum allowable bolt circle diameter (typ. 17(430)) for a transformer base.

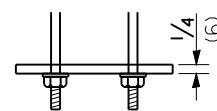


Provide dirt as needed to meet 5' (1.52 m) chord fill around foundation top. Grade dirt level with bottom of top plate.

Wiring window location identification marks shall be notched in side of plate or stamped on top.



METAL FOUNDATION



RING PLATE DETAIL

(When rock is encountered and foundation is shallower)

Schedule 40 5 (125) I.D. P.V.C. wiring window (grounding electrode not shown).

No. 6 bare copper grounding electrode conductor.

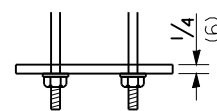
Length above foundation shall be adjusted to accommodate breakaway devices furnished by the contractor for a specific installation.

Use dirt removed from foundation to meet 5' (1.52 m) chord fill around foundation top. Grade dirt level with bottom of concrete chamfer.

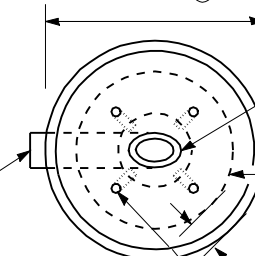
Schedule 40 5 (125) I.D. P.V.C. wiring window.

Two (min.) 5/8 x 10' (16 x 3 m) connected (threaded) grounding electrodes.

9 (230) I.D. with 11 1/2 (292) bolt circle
12 (305) I.D. with 15 (381) bolt circle
14 (356) I.D. with 17 (432) bolt circle



24 (610) min. dia. with 11 1/2 (292) bolt circle
30 (762) min. dia. with 15 (381) or 17 (432) bolt circle ③

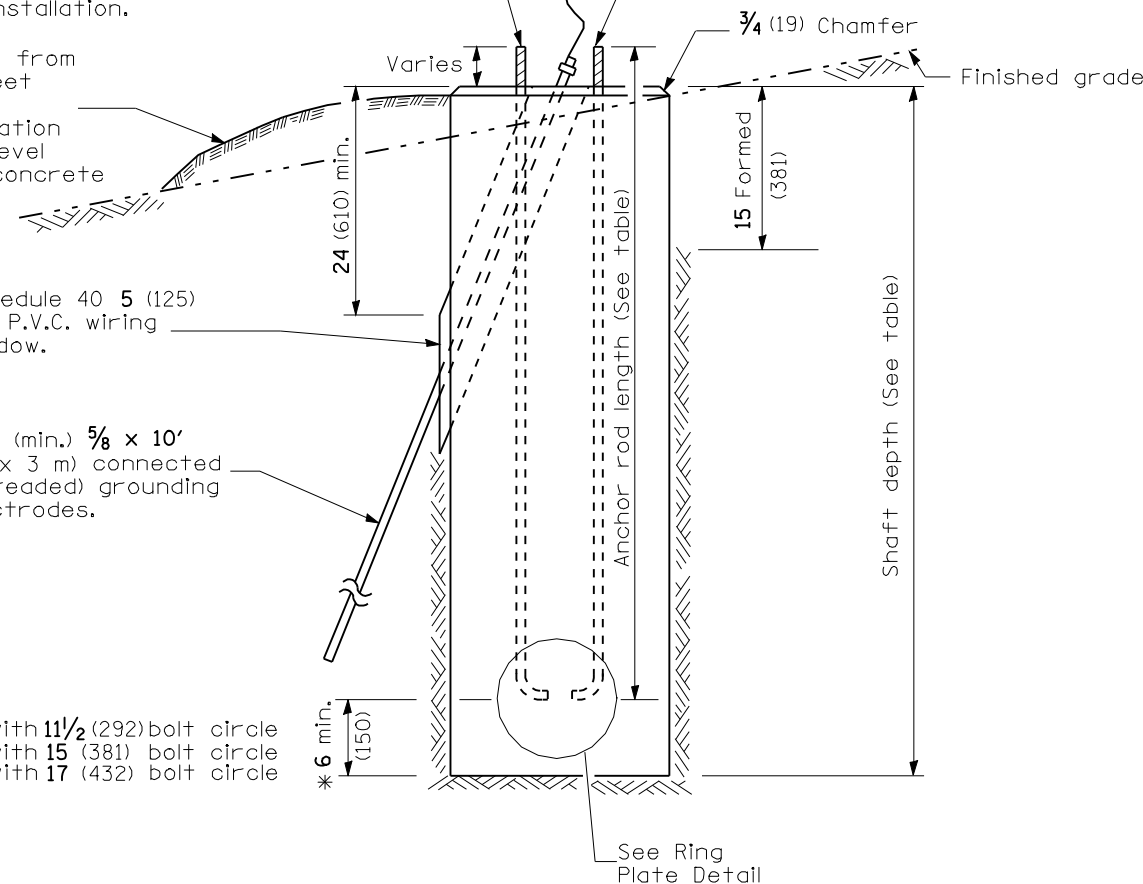


Top of wiring window shall be flush with top of foundation.

Plate to be installed when required (See ring plate detail)

3 (75) Min. concrete cover on all steel

Anchor rod 1 (25) diameter with 9 (230) threads. Anchor rod shall extend through nut 1 (25). For barrier or foundation behind guardrail, use self-locking nut and flat washer. Do not use lock washer.



CONCRETE FOUNDATION

* If the required anchor rod length above top of foundation is less than 3 (75), anchor rods may be lowered below 6 (150).

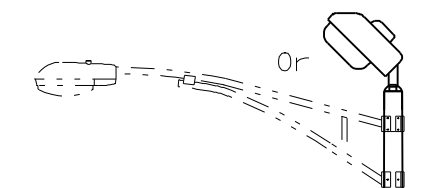
LIGHT POLE FOUNDATION

STANDARD 836001

Pole Foundation Setback:

For horizontal mounted luminaires, setback shall be a minimum of 20' (6.1 m) from edge of pavement.

For multimount luminaires, setback shall be a minimum of 30' (9 m) from edge of pavement. Poles shall be located 5' (1.5 m) behind guardrail or other protective barriers, or as directed by the Engineer.



GENERAL NOTES

All foundations are designed to be located on slopes not exceeding 2:1 where soils have an unconfined compressive strength of at least 1.0 TSF. The Contractor shall verify the soil strength during drilling for concrete foundations or by monitoring installation resistance of metal foundations and notify the Engineer if other conditions are encountered.

Anchor rod shall be increased in diameter as needed for 50' (15.2 m) mounting height or above. The Contractor shall match the breakaway device size or slotted hole size in the pole base plate to accommodate larger rod sizes.

Transformer bases shall not be used on metal foundations.

All dimensions are in inches (millimeters) unless otherwise shown.

REVISIONS	
NAME	DATE

ILLINOIS DEPARTMENT OF TRANSPORTATION
LIGHTING PLAN -
LIGHTING DETAILS 2 OF 5
FAP 322 (US 51)
SECTION 11-12
CHRISTIAN COUNTY

SCALE: NONE DRAWN BY IDOT
DATE CHECKED BY