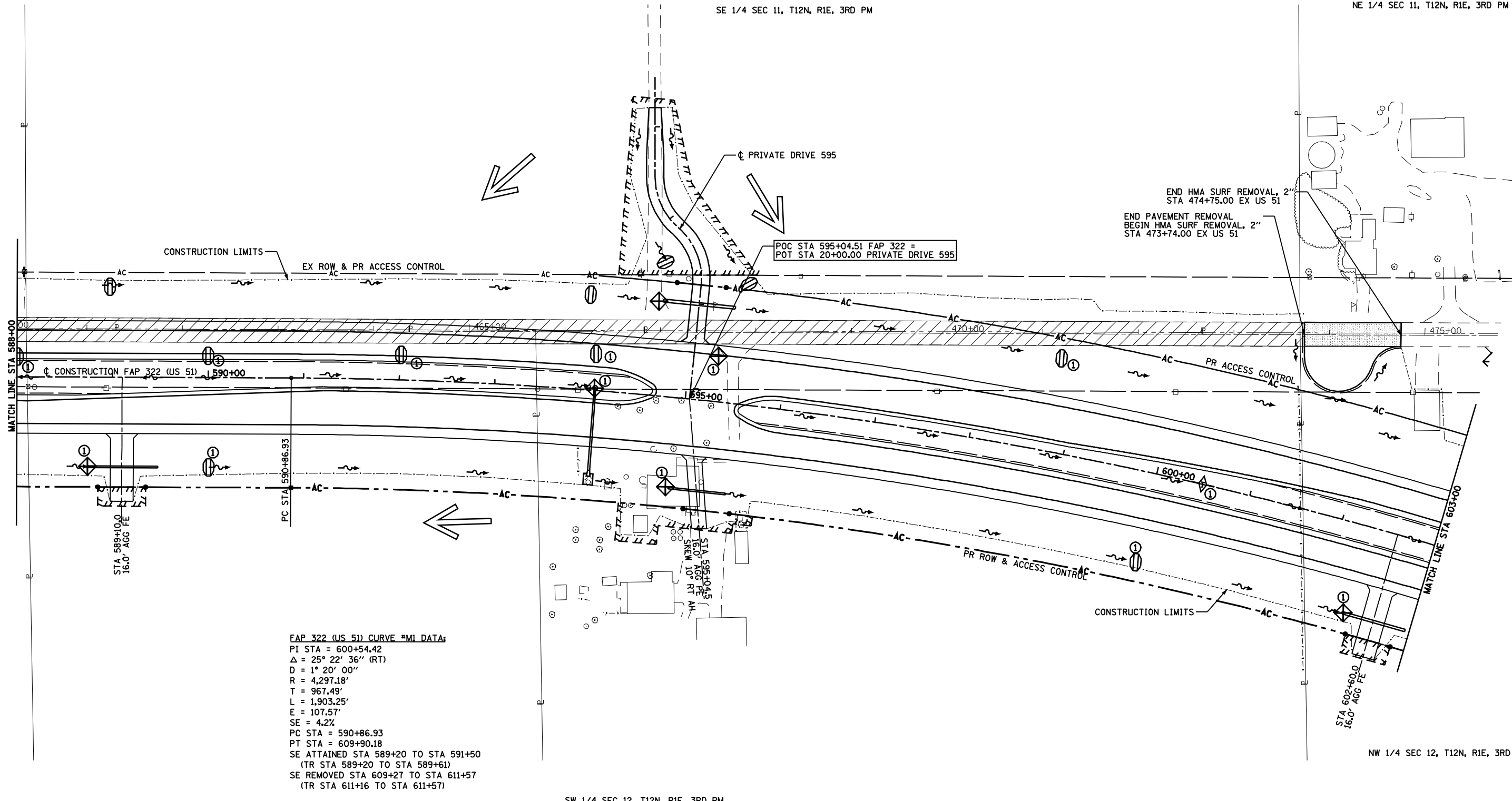


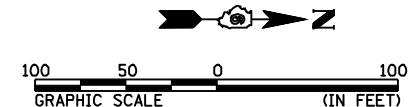
F.A.P. RTE.	SECTION	COUNTY	TOTAL SHEETS	SHEET NO.
322	11-12	CHRISTIAN	284	152
STA.	TO STA.			
FED. ROAD DIST. NO.	ILLINOIS	FED. AID PROJECT		



FAP 322 (US 51) CURVE #M1 DATA:  
 PI STA = 600+54.42  
 $\Delta = 25^\circ 22' 36''$  (RT)  
 $D = 1^\circ 20' 00''$   
 $R = 4,297.18'$   
 $T = 967.49'$   
 $L = 1,903.25'$   
 $E = 107.57'$   
 $SE = 4.2\%$   
 PC STA = 590+86.93  
 PT STA = 609+90.18  
 SE ATTAINED STA 589+20 TO STA 591+50  
 (TR STA 589+20 TO STA 589+61)  
 SE REMOVED STA 609+27 TO STA 611+57  
 (TR STA 611+16 TO STA 611+57)

SW 1/4 SEC 12, T12N, R1E, 3RD PM

NW 1/4 SEC 12, T12N, R1E, 3RD PM



REVISIONS	
NAME	DATE

ILLINOIS DEPARTMENT OF TRANSPORTATION  
 STORM WATER POLLUTION  
 PREVENTION PLAN  
 FAP 322 (US 51)  
 SECTION 11-12  
 CHRISTIAN COUNTY

SCALE: 1"=50'  
 DATE: 8/22/06  
 DRAWN BY: BGJ  
 CHECKED BY: SEB

FAP 322 (US 51) STA 588+00 TO STA 603+00

Mo-15-2018 12:29:43PM

SFILEX