

F.A.P. RTE.	SECTION	COUNTY	TOTAL SHEETS	SHEET NO.
322	11-12	CHRISTIAN	284	156
STA.		TO STA.		
FED. ROAD DIST. NO.		ILLINOIS FED. AID PROJECT		

FAP 322 (US 51) CURVE *M2 DATA:

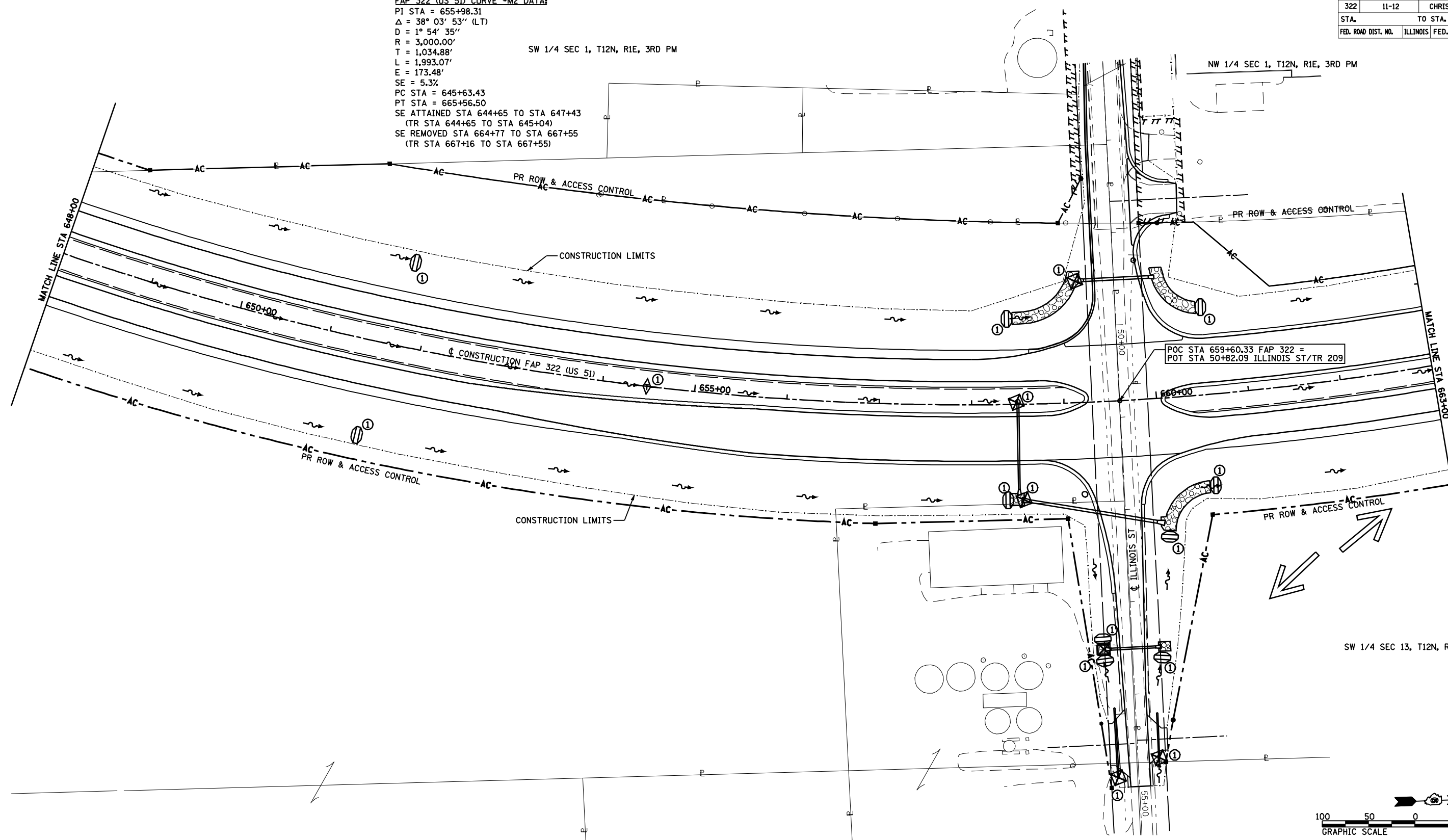
PI STA = 655+98.31
 $\Delta = 38^\circ 03' 53''$ (LT)
 $D = 1^\circ 54' 35''$
 $R = 3,000.00'$
 $T = 1,034.88'$
 $L = 1,993.07'$
 $E = 173.48'$
 $SE = 5.3\%$
 PC STA = 645+63.43
 PT STA = 665+56.50
 SE ATTAINED STA 644+65 TO STA 647+43
 (TR STA 644+65 TO STA 645+04)
 SE REMOVED STA 664+77 TO STA 667+55
 (TR STA 667+16 TO STA 667+55)

SW 1/4 SEC 1, T12N, R1E, 3RD PM

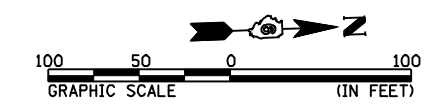
NW 1/4 SEC 1, T12N, R1E, 3RD PM

SW 1/4 SEC 13, T12N, R1E, 3RD PM

SE 1/4 SEC 1, T12N, R1E, 3RD PM



POC STA 659+60.33 FAP 322 =
 POT STA 50+82.09 ILLINOIS ST/TR 209



REVISIONS	
NAME	DATE

ILLINOIS DEPARTMENT OF TRANSPORTATION
 STORM WATER POLLUTION
 PREVENTION PLAN
 FAP 322 (US 51)
 SECTION 11-12
 CHRISTIAN COUNTY
 SCALE: 1"=50'
 DATE: 8/22/06
 DRAWN BY: BGJ
 CHECKED BY: SEB
 FAP 322 (US 51) STA 648+00 TO STA 663+00

Map-15-2018 12/2/14/2PM

S:\FILES