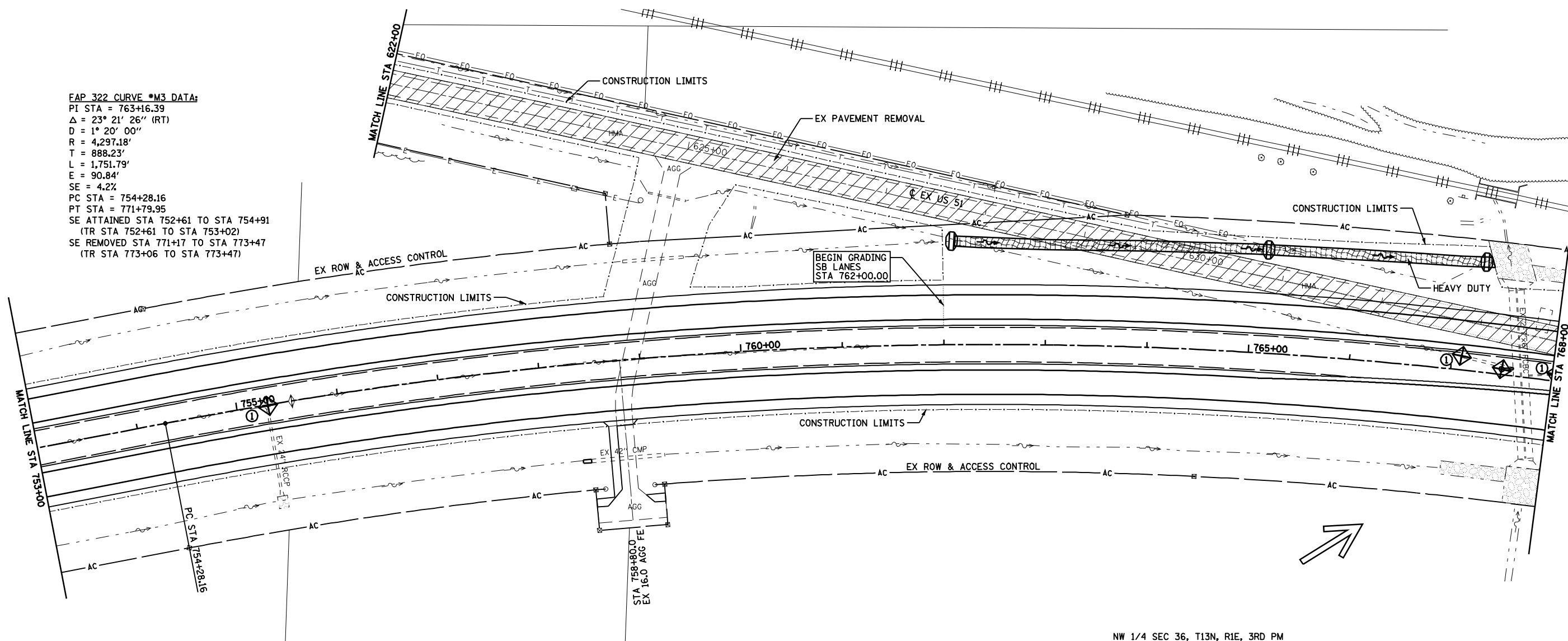
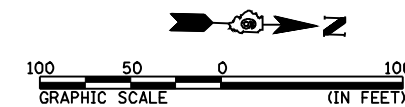


F.A.P. RTE.	SECTION	COUNTY	TOTAL SHEETS	SHEET NO.
322	11-12	CHRISTIAN	284	163
STA.		TO STA.		
FED. ROAD DIST. NO.		ILLINOIS	FED. AID PROJECT	

FAP 322 CURVE #M3 DATA:
 PI STA = 763+16.39
 $\Delta = 23^\circ 21' 26''$ (RT)
 $D = 1^\circ 20' 00''$
 $R = 4,297.18'$
 $T = 888.23'$
 $L = 1,751.79'$
 $E = 90.84'$
 $SE = 4.2\%$
 PC STA = 754+28.16
 PT STA = 771+79.95
 SE ATTAINED STA 752+61 TO STA 754+91
 (TR STA 752+61 TO STA 753+02)
 SE REMOVED STA 771+17 TO STA 773+47
 (TR STA 773+06 TO STA 773+47)



NW 1/4 SEC 36, T13N, R1E, 3RD PM



REVISIONS	
NAME	DATE

ILLINOIS DEPARTMENT OF TRANSPORTATION
 STORM WATER POLLUTION
 PREVENTION PLAN
 FAP 322 (US 51)
 SECTION 11-12
 CHRISTIAN COUNTY
 SCALE: 1"=50'
 DATE: 8/22/06
 DRAWN BY: BGJ
 CHECKED BY: SEB
 FAP 322 (US 51) STA 753+00 TO STA 768+00

Map-15-2018 12/2/14/7PM

S:\FILE