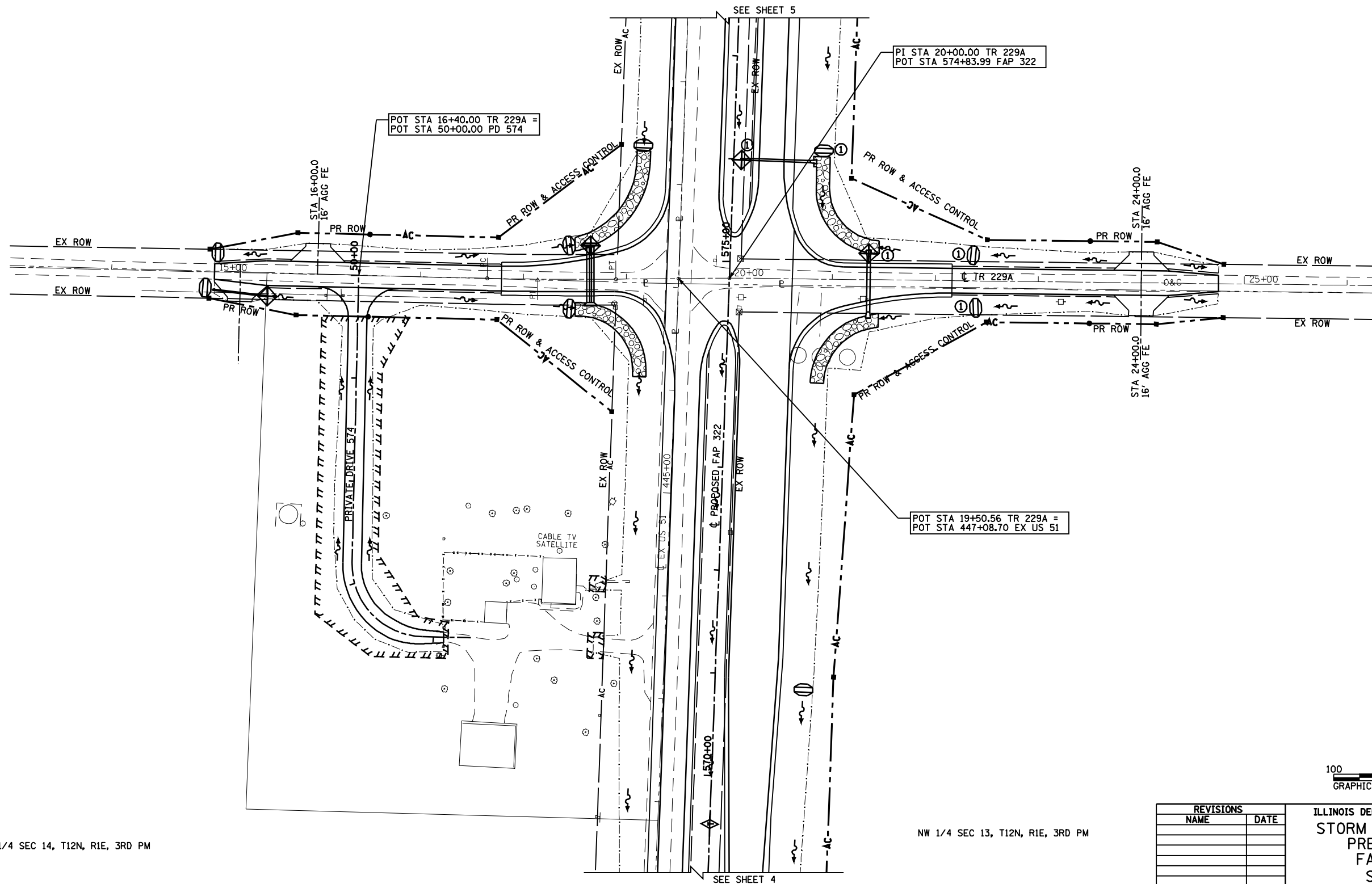


F.A.P. RTE.	SECTION	COUNTY	TOTAL SHEETS	SHEET NO.
322	11-12	CHRISTIAN	284	166
STA.		TO STA.		
FED. ROAD DIST. NO.		ILLINOIS FED. AID PROJECT		

SE 1/4 SEC 11, T12N, R1E, 3RD PM

SW 1/4 SEC 12, T12N, R1E, 3RD PM



NE 1/4 SEC 14, T12N, R1E, 3RD PM

NW 1/4 SEC 13, T12N, R1E, 3RD PM

REVISIONS	
NAME	DATE

ILLINOIS DEPARTMENT OF TRANSPORTATION
 STORM WATER POLLUTION
 PREVENTION PLAN
 FAP 322 (US 51)
 SECTION 11-12
 CHRISTIAN COUNTY

SCALE: 1"=50' DRAWN BY: BGJ
 DATE: . CHECKED BY: .

Mo-15-2018 12:30:00PM

\$FILE\$