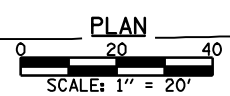
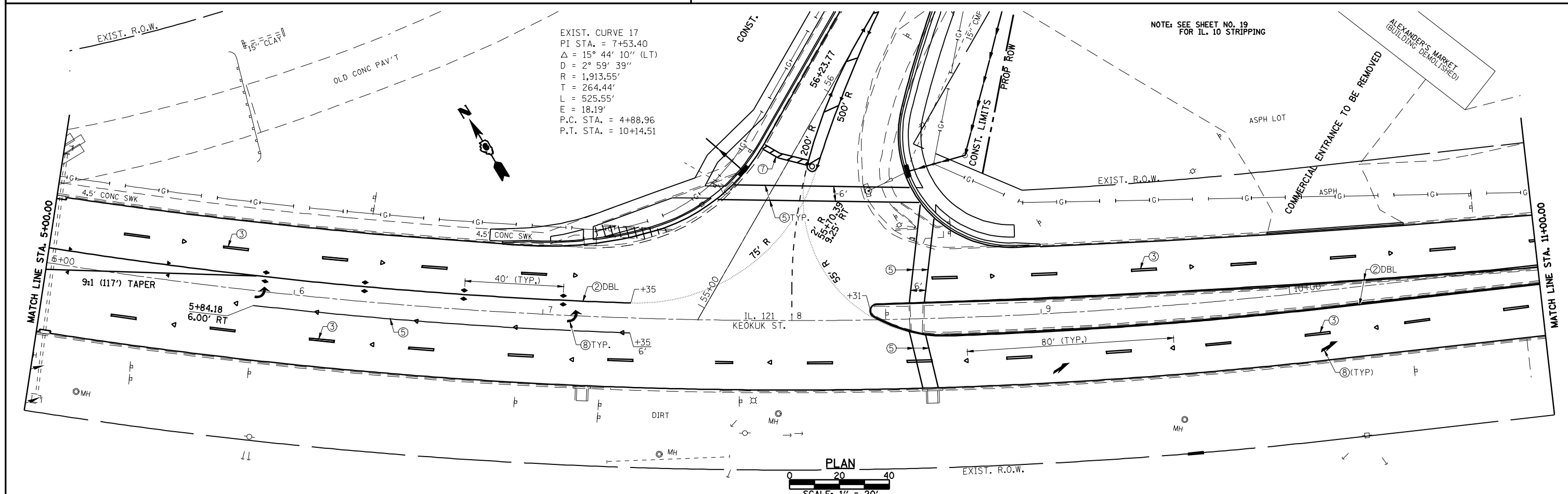
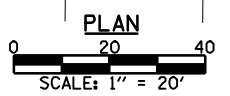


- PREFORMED PLASTIC PAVEMENT MARKING LEGEND**
- ① THERMOPLASTIC PAVEMENT MARKING, - LINE 5" (SOLID WHITE)
  - ② THERMOPLASTIC PAVEMENT MARKING, - LINE 5" (SOLID YELLOW)
  - ③ PREFORMED PLASTIC PAVEMENT MARKING, - TYPE B INLAID LINE 5" (10' DASH, 30' SKIP, WHITE)
  - ④ PREFORMED PLASTIC PAVEMENT MARKING, - TYPE B INLAID LINE 5" (10' DASH, 30' SKIP, YELLOW)
  - ⑤ THERMOPLASTIC PAVEMENT MARKING, - LINE 6" (SOLID WHITE)
  - ⑥ THERMOPLASTIC PAVEMENT MARKING, - LINE 12" (SOLID YELLOW)
  - ⑦ PREFORMED PLASTIC PAVEMENT MARKING, - TYPE B INLAID LINE 24" (SOLID WHITE)
  - ⑧ PREFORMED PLASTIC PAVEMENT MARKING, - TYPE B INLAID LETTERS AND SYMBOLS (WHITE)
  - ⑨ THERMOPLASTIC PAVEMENT MARKING, - LINE 12" (SOLID WHITE)
  - ⑩ PREFORMED PLASTIC PAVEMENT MARKING TYPE B INLAID LINE - 6" (2' DASH 6' SKIP) (WHITE)
- RAISED REFLECTIVE PAVEMENT MARKER LEGEND**
- YELLOW STRIPE
  - WHITE STRIPE
  - ◀ ONE-WAY AMBER MARKER
  - ◀ ONE-WAY CRYSTAL/OPAQUE MARKER
  - ◆ TWO-WAY AMBER MARKER



|  |                        |            |           |  |  |                           |                                |                              |              |                     |                           |  |
|--|------------------------|------------|-----------|--|--|---------------------------|--------------------------------|------------------------------|--------------|---------------------|---------------------------|--|
| FILE NAME =  | USER NAME = laughlinr1 | DESIGNED - | REVISED - |  <b>Allen Henderson &amp; Associates, Inc.</b><br>Civil and Structural Engineers Springfield, IL<br>62703 Phone: (217)544-8033 IL Design Firm<br>No. 184-001907 | <b>STRIPING AND PAVEMENT MARKER PLAN</b> |                           | F.A.P. RTE. 320                | SECTION (242)RS-4, N 116RS-5 | COUNTY LOGAN | TOTAL SHEETS 32     | SHEET NO. 23              |  |
| PLOT SCALE = 40.0000' / IN.  | CHECKED -              | REVISED -  | REVISED - |  | SCALE: 1" = 20'                          | SHEET NO. 23 OF 32 SHEETS | STA. 61+00.00 TO STA. 11+00.00 | CONTRACT NO. 72998           |              | FED. ROAD DIST. NO. | ILLINOIS FED. AID PROJECT |  |
| PLOT DATE = Mar-18-2010 02:17:17PM                                       | DATE -                 | REVISED -  | REVISED - |  |  |                           |                                |                              |              |                     |                           |  |
| <small>ct:\pwork\p\1001\LAUGHLINRL\08181122\d672998-sht-plan.dgn</small> |                        |            |           |  |  |                           |                                |                              |              |                     |                           |  |