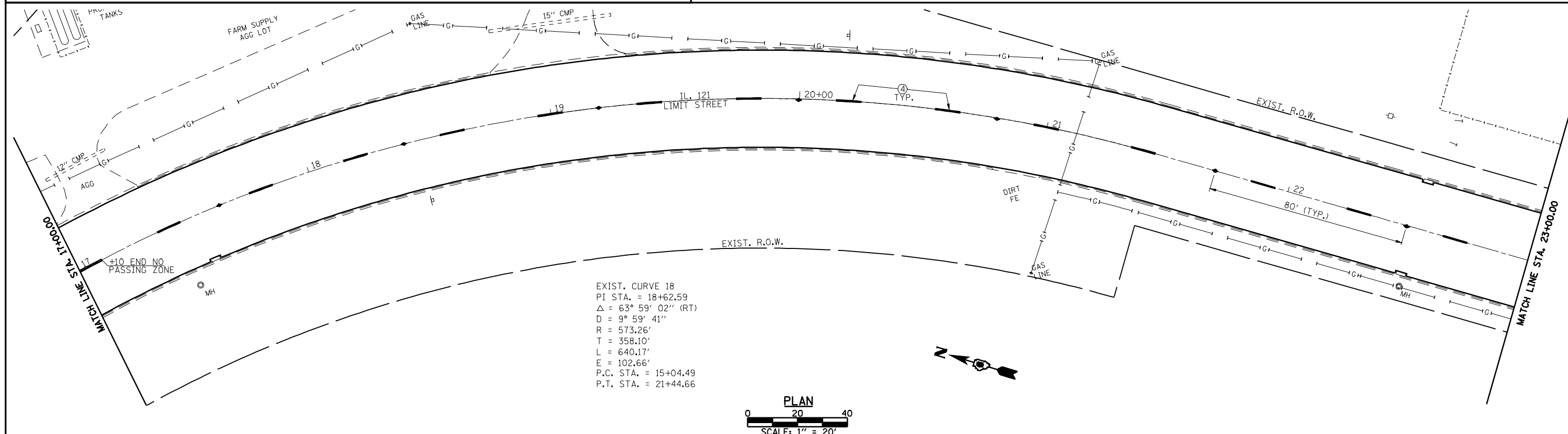
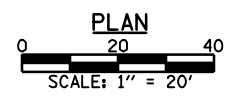
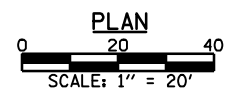



PREFORMED PLASTIC PAVEMENT MARKING LEGEND		RAISED REFLECTIVE PAVEMENT MARKER LEGEND
① THERMOPLASTIC PAVEMENT MARKING, - LINE 5" (SOLID WHITE)	⑥ THERMOPLASTIC PAVEMENT MARKING, - LINE 12" (SOLID YELLOW)	— YELLOW STRIPE
② THERMOPLASTIC PAVEMENT MARKING, - LINE 5" (SOLID YELLOW)	⑦ PREFORMED PLASTIC PAVEMENT MARKING, - TYPE B INLAID LINE 24" (SOLID WHITE)	— WHITE STRIPE
③ PREFORMED PLASTIC PAVEMENT MARKING, - TYPE B INLAID LINE 5" (10' DASH, 30' SKIP, WHITE)	⑧ PREFORMED PLASTIC PAVEMENT MARKING, - TYPE B INLAID LETTERS AND SYMBOLS (WHITE)	◀ ONE-WAY AMBER MARKER
④ PREFORMED PLASTIC PAVEMENT MARKING, - TYPE B INLAID LINE 5" (10' DASH, 30' SKIP, YELLOW)	⑨ THERMOPLASTIC PAVEMENT MARKING, - LINE 12" (SOLID WHITE)	◀ ONE-WAY CRYSTAL/OPAQUE MARKER
⑤ THERMOPLASTIC PAVEMENT MARKING, - LINE 6" (SOLID WHITE)	⑩ PREFORMED PLASTIC PAVEMENT MARKING TYPE B INLAID LINE - 6" (2' DASH 6' SKIP) (WHITE)	◆ TWO-WAY AMBER MARKER



EXIST. CURVE 18
 PI STA. = 18+62.59
 $\Delta = 63^\circ 59' 02''$ (RT)
 $D = 9^\circ 59' 41''$
 $R = 573.26'$
 $T = 358.10'$
 $L = 640.17'$
 $E = 102.66'$
 P.C. STA. = 15+04.49
 P.T. STA. = 21+44.66



FILE NAME =	USER NAME = laughlinr1	DESIGNED -	REVISED -	 Allen Henderson & Associates, Inc. Civil and Structural Engineers Springfield, IL 62703 Phone: (217)544-8033 IL Design Firm No. 184-001907	STRIPING AND PAVEMENT MARKER PLAN		F.A.P. RTE.	SECTION	COUNTY	TOTAL SHEETS	SHEET NO.	
	PLOT SCALE = 40.0000' / IN.	DRAWN -	REVISED -		SCALE: 1" = 20'	SHEET NO. 24 OF 32 SHEETS	STA. 11+00.00 TO STA. 23+00.00	320	(24ZRS-4, N, 116RS-5	LOGAN	32	24
	PLOT DATE = Mar-18-2010 02:17:21PM	CHECKED -	REVISED -					CONTRACT NO. 72998				
		DATE -	REVISED -					FED. ROAD DIST. NO. ILLINOIS FED. AID PROJECT				

c:\pwwork\p\1001\LAUGHLINRL\0818122\d672998-sht-plan.dgn