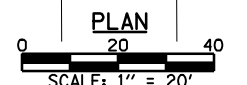
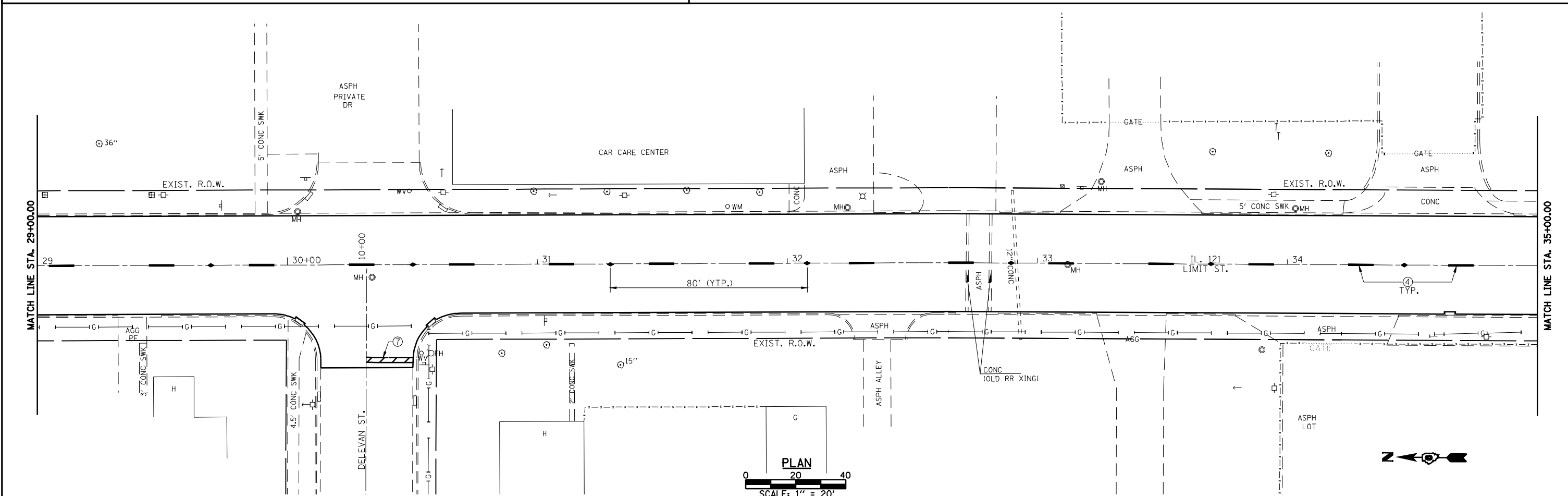
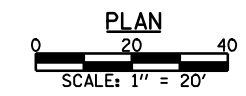


- | PREFORMED PLASTIC PAVEMENT MARKING LEGEND  |  | RAISED REFLECTIVE PAVEMENT MARKER LEGEND |
|--|--|--|
| ① THERMOPLASTIC PAVEMENT MARKING, - LINE 5" (SOLID WHITE)                                  | ⑥ THERMOPLASTIC PAVEMENT MARKING, - LINE 12" (SOLID YELLOW)                            | — YELLOW STRIPE                          |
| ② THERMOPLASTIC PAVEMENT MARKING, - LINE 5" (SOLID YELLOW)                                 | ⑦ PREFORMED PLASTIC PAVEMENT MARKING, - TYPE B INLAID LINE 24" (SOLID WHITE)           | — WHITE STRIPE                           |
| ③ PREFORMED PLASTIC PAVEMENT MARKING, - TYPE B INLAID LINE 5" (10' DASH, 30' SKIP, WHITE)  | ⑧ PREFORMED PLASTIC PAVEMENT MARKING, - TYPE B INLAID LETTERS AND SYMBOLS (WHITE)      | ◀ ONE-WAY AMBER MARKER                   |
| ④ PREFORMED PLASTIC PAVEMENT MARKING, - TYPE B INLAID LINE 5" (10' DASH, 30' SKIP, YELLOW) | ⑨ THERMOPLASTIC PAVEMENT MARKING, - LINE 12" (SOLID WHITE)                             | ◀ ONE-WAY CRYSTAL/OPAQUE MARKER          |
| ⑤ THERMOPLASTIC PAVEMENT MARKING, - LINE 6" (SOLID WHITE)                                  | ⑩ PREFORMED PLASTIC PAVEMENT MARKING TYPE B INLAID LINE - 6" (2' DASH 6' SKIP) (WHITE) | ◆ TWO-WAY AMBER MARKER                   |



FILE NAME =	USER NAME = laughlinr1	DESIGNED -	REVISED -	 <b>Allen Henderson &amp; Associates, Inc.</b> Civil and Structural Engineers Springfield, IL 62703 Phone: (217)544-8033 IL Design Firm No. 184-001907	<b>STRIPING AND PAVEMENT MARKER PLAN</b>			F.A.P. RTE. 320	SECTION (242ZRS-4, N; 116RS-5)	COUNTY LOGAN	TOTAL SHEETS 32	SHEET NO. 25
PLOT SCALE = 40.0000' / IN.	CHECKED -	REVISED -	REVISED -		SCALE: 1" = 20'	SHEET NO. 25 OF 32 SHEETS	STA. 23+00.00 TO STA. 35+00.00	CONTRACT NO. 72998				
PLOT DATE = Mar-18-2010 02:17:23PM	DATE -	REVISED -	REVISED -					FED. ROAD DIST. NO.	ILLINOIS FED. AID PROJECT			
<small>ct:\pwork\p\WID01\LAUGHLINR1\08181122\d672998-sht-plan.dgn</small>												