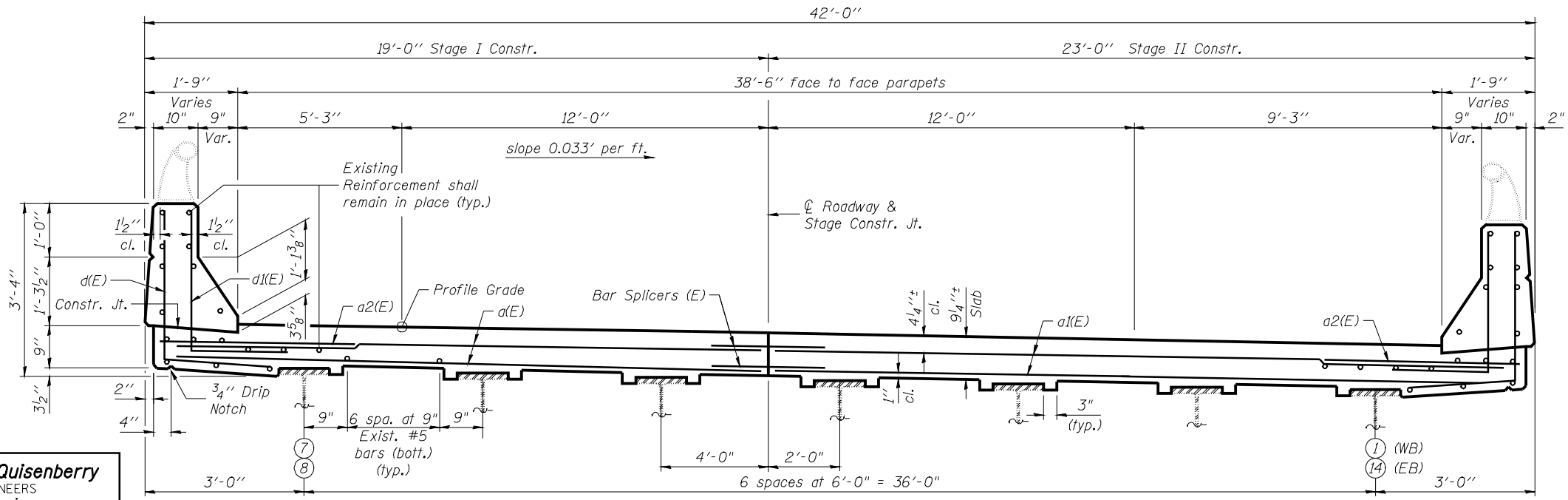
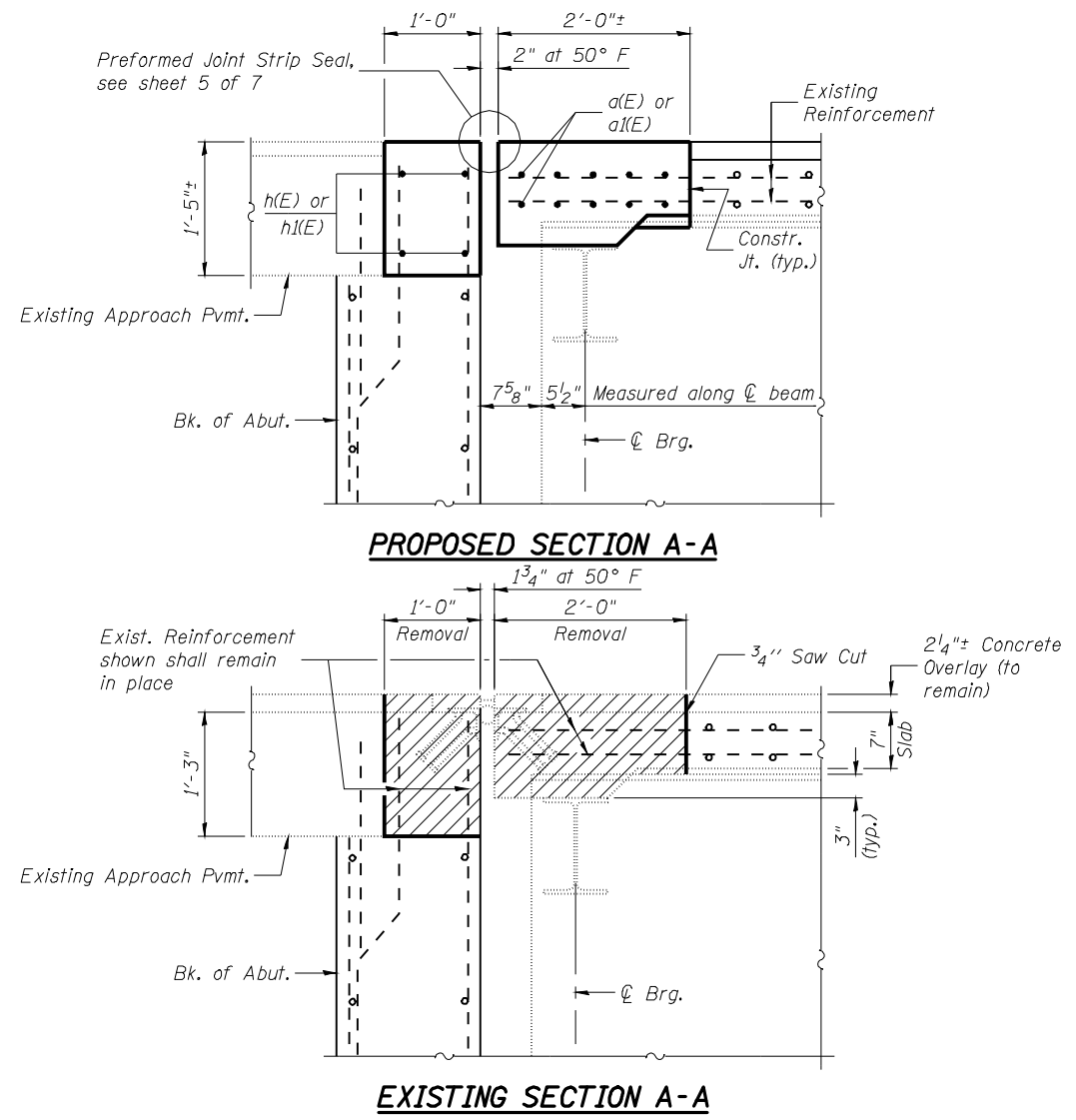
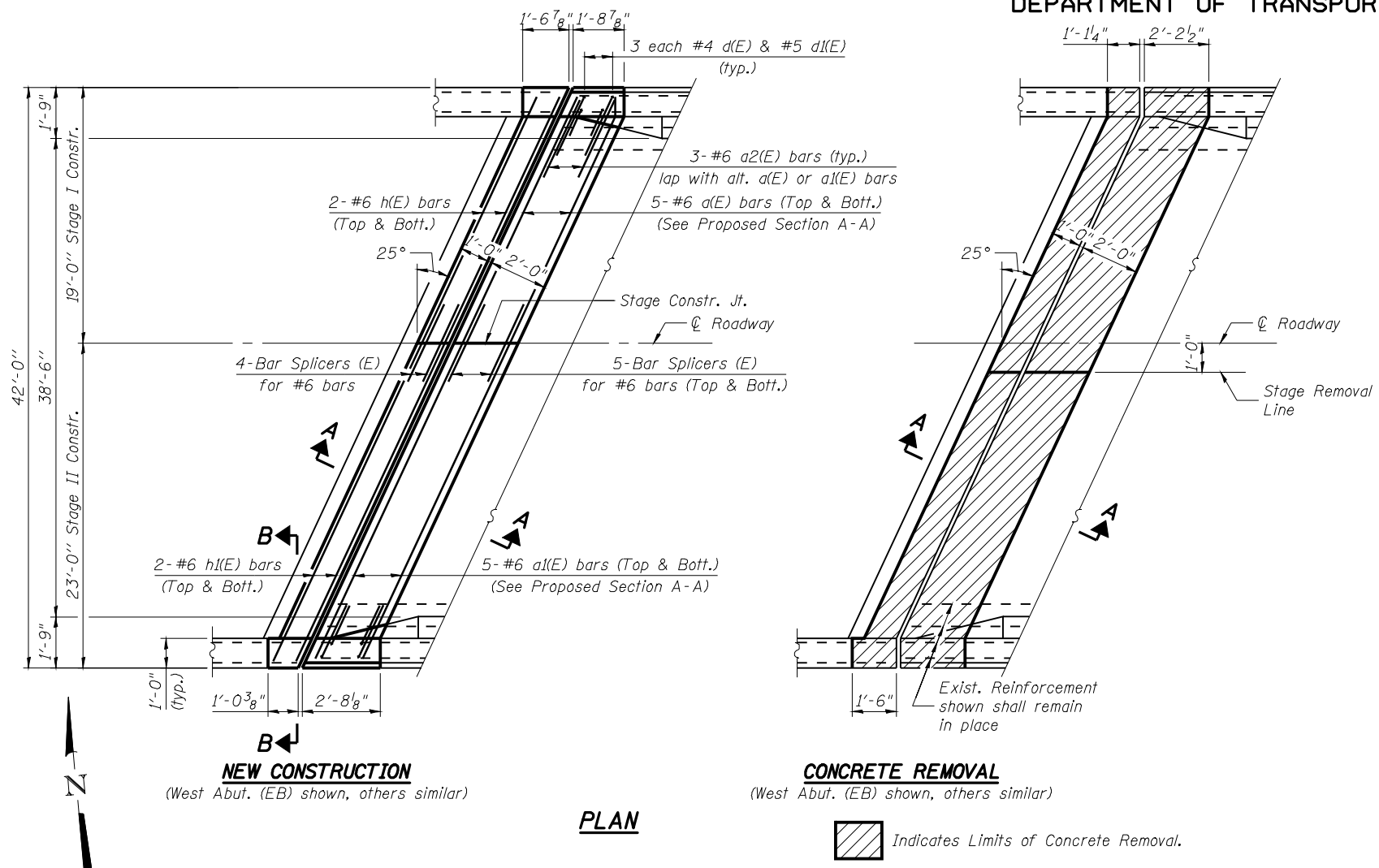


STATE OF ILLINOIS
DEPARTMENT OF TRANSPORTATION



Notes:
For Section B-B, Parapet Details and Bill of Material see sheet 4 of 7.
Existing reinforcement shall be cleaned and incorporated into the new construction. Cost included with Concrete Removal.

Johnson, Depp & Quisenberry
CONSULTING ENGINEERS
Springfield, Illinois

DESIGNED: JDQ	DRAWN: PTR
CHECKED: DCD	CHECKED: DCD

SUPERSTRUCTURE
STRUCTURE NO. 086-0023(EB) & 0024(WB)

SHEET 3 OF 7	F.A.I. RTE.	SECTION	COUNTY	TOTAL SHEETS	SHEET NO.
	72	86-10(RS-3)	SCOTT	48	37
	STA. 200+00.00		CONTRACT NO. 72A16		
FED. ROAD DIST. NO. ILLINOIS FED. AID PROJECT					

DATE: Apr-06-2010 10:05:52AM USER: laughlinr1 FILE: \$FILE\$