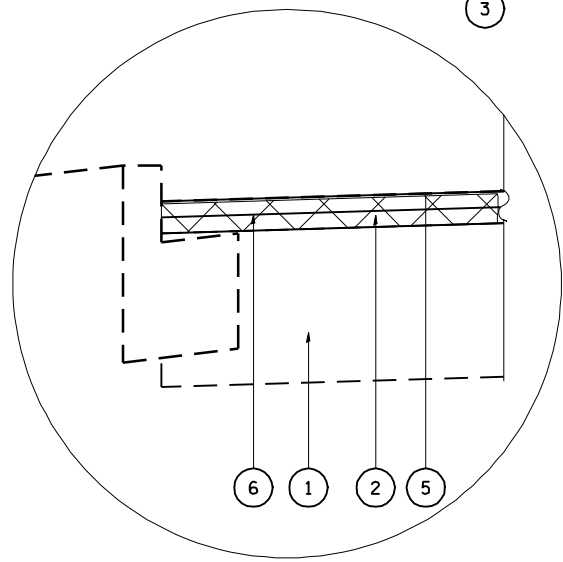
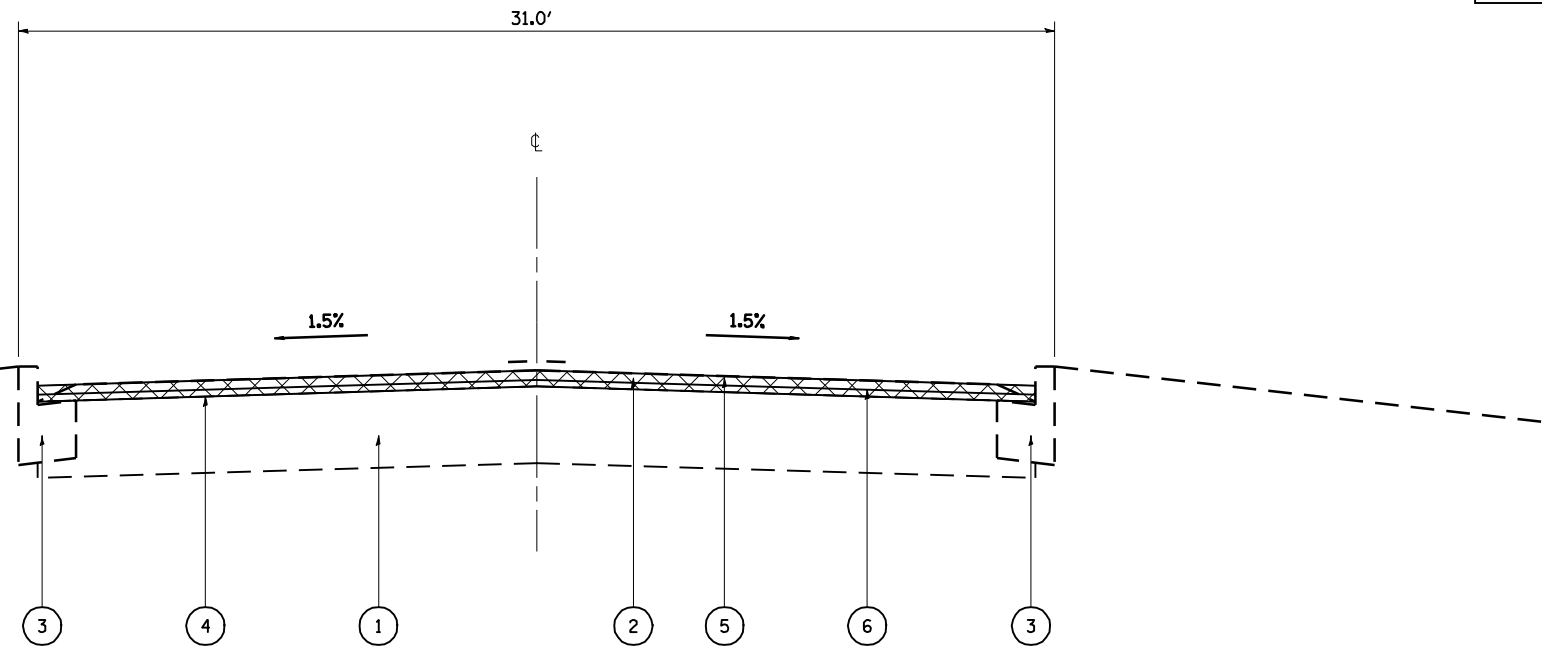


STA. 19+26.50 - 27+63.31  
 STA. 3+84.13 - 16+00.00

STATION EQUATION:  
 STA. 27+63.31 (BK) =  
 STA. 3+84.13 (AH)



DETAIL "A"



STA. 16+00.00 - 72+43.58

- ① EXISTING PCC PAVEMENT, 7"
- ② EXISTING HMA, 2 1/2"
- ③ EXISTING CONCRETE CURB & GUTTER
- ④ PROP. HOT-MIX ASPHALT SURFACE REMOVAL - 2 1/2"
- ⑤ PROP. HOT-MIX ASPHALT SURFACE COURSE, MIX D, N70, 1 1/2"
- ⑥ PROP. LEVELING BINDER (MACHINE METHOD), N70, 1"

FILE NAME = e:\pwork\pwork\LAUGHLIN\ldms50958\672838-ah-typical.dgn	USER NAME = laughlinr1	DESIGNED -	REVISED -	<b>STATE OF ILLINOIS DEPARTMENT OF TRANSPORTATION</b>	<b>TYPICAL SECTIONS</b>				F.A.U. RTE.	SECTION	COUNTY	TOTAL SHEETS	SHEET NO.
	PLOT SCALE = 10.0000' / IN.	CHECKED -	REVISED -		SCALE:	SHEET NO.	OF SHEETS	STA.	TO STA.	7708	20RS-1, (22 & 23)RS-4	LOGAN	28
PLOT DATE = Apr-09-2010 09:52:08AM	DATE -	REVISED -	REVISED -					CONTRACT NO. 72B38			ILLINOIS FED. AID PROJECT		