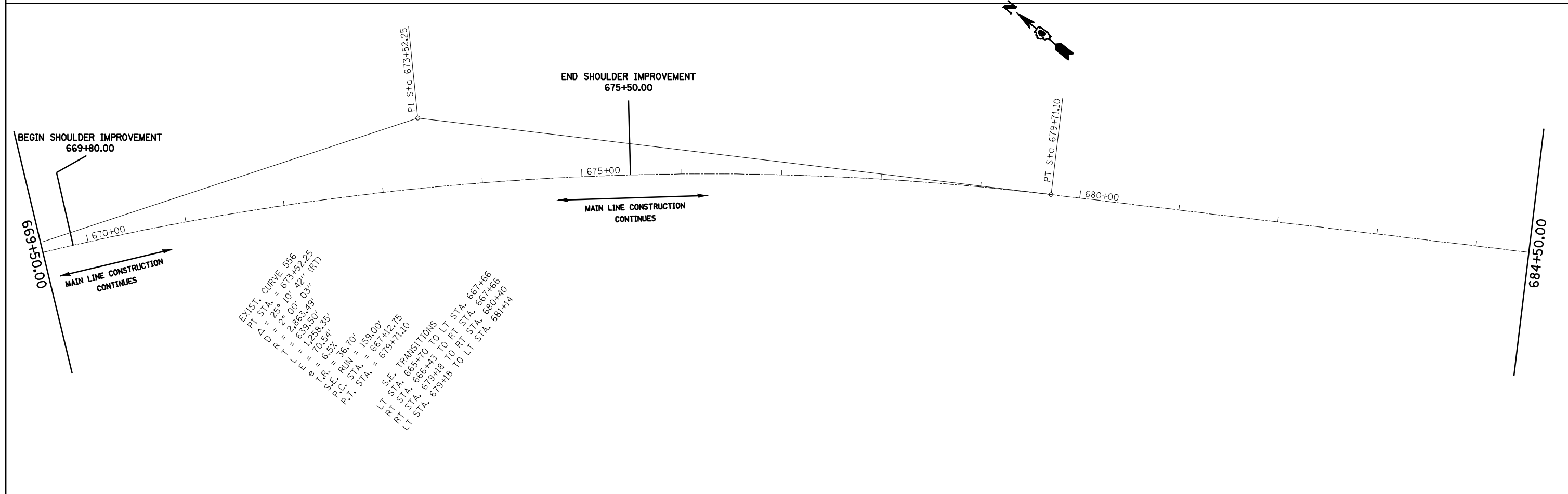


EXIST. CURVE 558
 PI STA. = 657+95.32
 Δ = 30° 35' 56" (LT)
 Δ D = 1,910.01'
 R = 522.50'
 L = 1,020.04'
 θ = 1.53°
 T.R. = 36.80'
 S.E. RUN = 184.00'
 P.C. STA. = 652+72.82
 P.T. STA. = 662+92.86

S.E. TRANSITIONS
 RT STA. 651+13 TO RT STA. 653+34
 LT STA. 651+87 TO LT STA. 653+34
 RT STA. 662+32 TO RT STA. 664+52
 LT STA. 662+32 TO LT STA. 664+52

STATION 662+46.40 BK =
 PI STA 662+92.86 BK =
 POT Sta 662+46.40 AH



EXIST. CURVE 556
 PI STA. = 673+52.25
 Δ = 25° 10' 42" (RT)
 Δ D = 2,863.49'
 R = 639.50'
 L = 1,238.35'
 θ = 6.53°
 T.R. = 36.10'
 S.E. RUN = 159.00'
 P.C. STA. = 667+42.75
 P.T. STA. = 679+71.10

S.E. TRANSITIONS
 LT STA. 665+70 TO LT STA. 667+86
 RT STA. 666+43 TO RT STA. 667+86
 LT STA. 679+18 TO LT STA. 681+14
 RT STA. 679+18 TO RT STA. 681+14

FILE NAME =	USER NAME = laughlinr1	DESIGNED -	REVISED -
e:\pwwork\pwidot\LAUGHLINRL\dms26879\0672886-Sht-plans1.dgn		DRAWN -	REVISED -
PLOT SCALE = 100.0000' / IN.		CHECKED -	REVISED -
PLOT DATE = Apr-02-2010 07:25:47AM		DATE -	REVISED -

**STATE OF ILLINOIS
 DEPARTMENT OF TRANSPORTATION**

LINE DIAGRAM			
SCALE: 1"=100'	SHEET NO. 2 OF 9 SHEETS	STA.	TO STA.

F.A.P. RTE.	SECTION	COUNTY	TOTAL SHEETS	SHEET NO.
745	105RS-7, 106RS-5	ADAMS	47	14
CONTRACT NO. 72B86				
ILLINOIS FED. AID PROJECT				