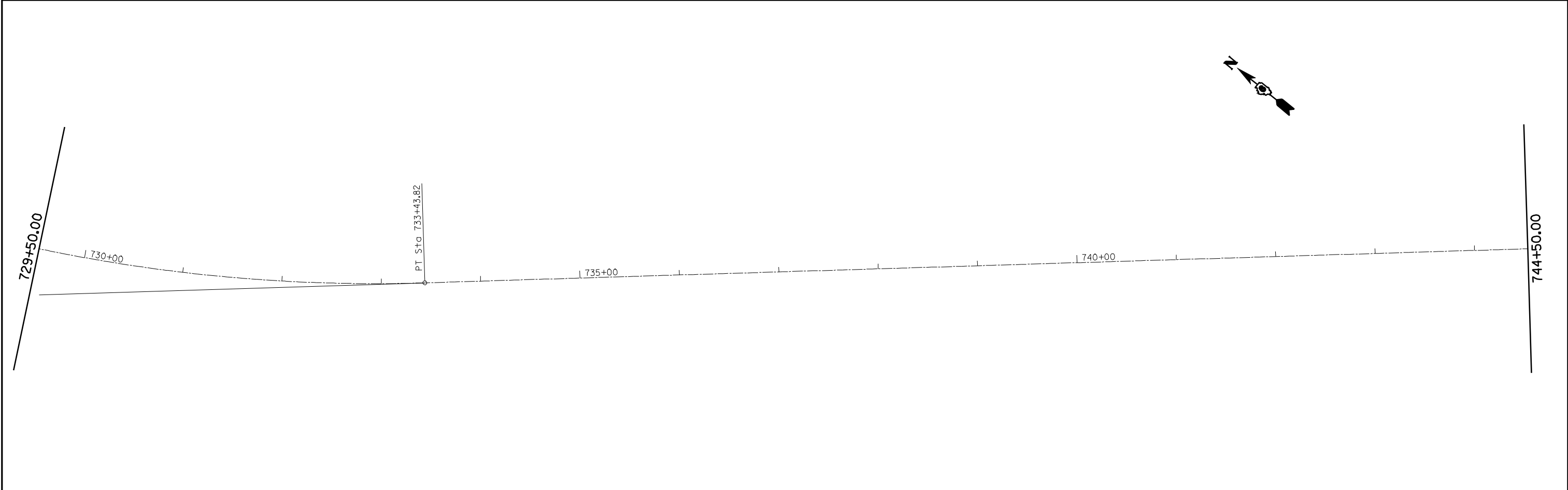


EXIST. CURVE 524  
 PI STA. = 728+55.84  
 $\Delta = 35^\circ 16' 21''$  (LT)  
 $D = 3^\circ 29' 44''$   
 $R = 1,639.12'$   
 $T = 521.10'$   
 $E = 80.84'$   
 $e = 6.0\%$   
 $T.R. = 36.75'$   
 $S.E. RUN = 147.00'$   
 $P.C. STA. = 723+34.74$   
 $P.T. STA. = 733+43.82$

S.E. TRANSITIONS  
 RT STA. 722+00 TO RT STA. 723+84  
 LT STA. 722+73 TO LT STA. 723+84  
 LT STA. 732+95 TO LT STA. 734+05  
 RT STA. 732+95 TO RT STA. 734+79



FILE NAME =	USER NAME = laughlinr1	DESIGNED -	REVISED -
e:\pwwork\pwidot\LAUGHLINRL\dms26879\0672886-Sht-plans1.dgn		DRAWN -	REVISED -
PLOT SCALE = 100.0000' / IN.		CHECKED -	REVISED -
PLOT DATE = Apr-02-2010 07:25:53AM		DATE -	REVISED -

**STATE OF ILLINOIS  
 DEPARTMENT OF TRANSPORTATION**

**LINE DIAGRAM**

SCALE: 1"=100'    SHEET NO. 4 OF 9 SHEETS    STA.    TO STA.

F.A.P. RTE.	SECTION	COUNTY	TOTAL SHEETS	SHEET NO.
745	105RS-7, 106RS-5	ADAMS	47	16
CONTRACT NO. 72B86				
ILLINOIS FED. AID PROJECT				