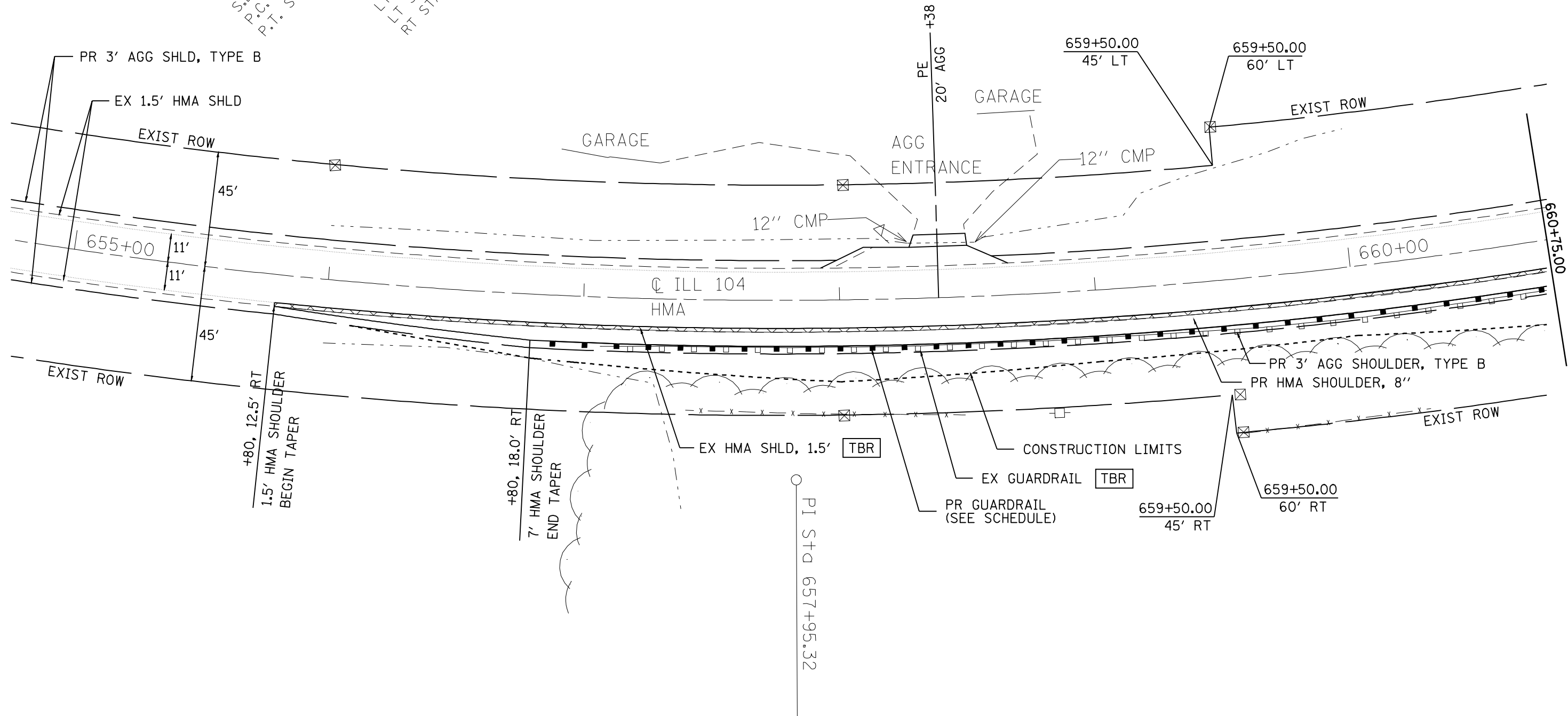
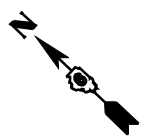


EXIST. CURVE 558
 PI STA. = 657+95.32
 $\Delta = 30^\circ 35' 59''$
 $D = 1,910.01'$
 $R = 522.50'$
 $L = 1,020.50'$
 $\theta = 70.18'$
 $T.R. = 7.5\%$
 S.E. RUN = 36.80'
 P.C. STA. = 184.00'
 P.T. STA. = 652+72.82
 S.E. TRANSITIONS
 RT STA. 651+13 TO RT STA. 653+34
 LT STA. 651+87 TO LT STA. 653+34
 RT STA. 662+32 TO LT STA. 663+79
 LT STA. 662+32 TO LT STA. 664+52



FILE NAME =	USER NAME = laughlinr1	DESIGNED -	REVISED -
er:\pwork\pwidot\LAUGHLINRL\dms26879\672886-ah-t-Plans2.dgn		DRAWN -	REVISED -
PLOT SCALE = 40.0000' / IN.		CHECKED -	REVISED -
PLOT DATE = Apr-02-2010 07:26:10AM		DATE -	REVISED -

**STATE OF ILLINOIS
 DEPARTMENT OF TRANSPORTATION**

SHOULDER IMPROVEMENT PLAN VIEWS

SCALE: SHEET NO. 1 OF 10 SHEETS STA. TO STA.

F.A.P. RTE.	SECTION	COUNTY	TOTAL SHEETS	SHEET NO.
745	105RS-7, 106RS-5	ADAMS	47	22
CONTRACT NO. 72B86				
ILLINOIS FED. AID PROJECT				