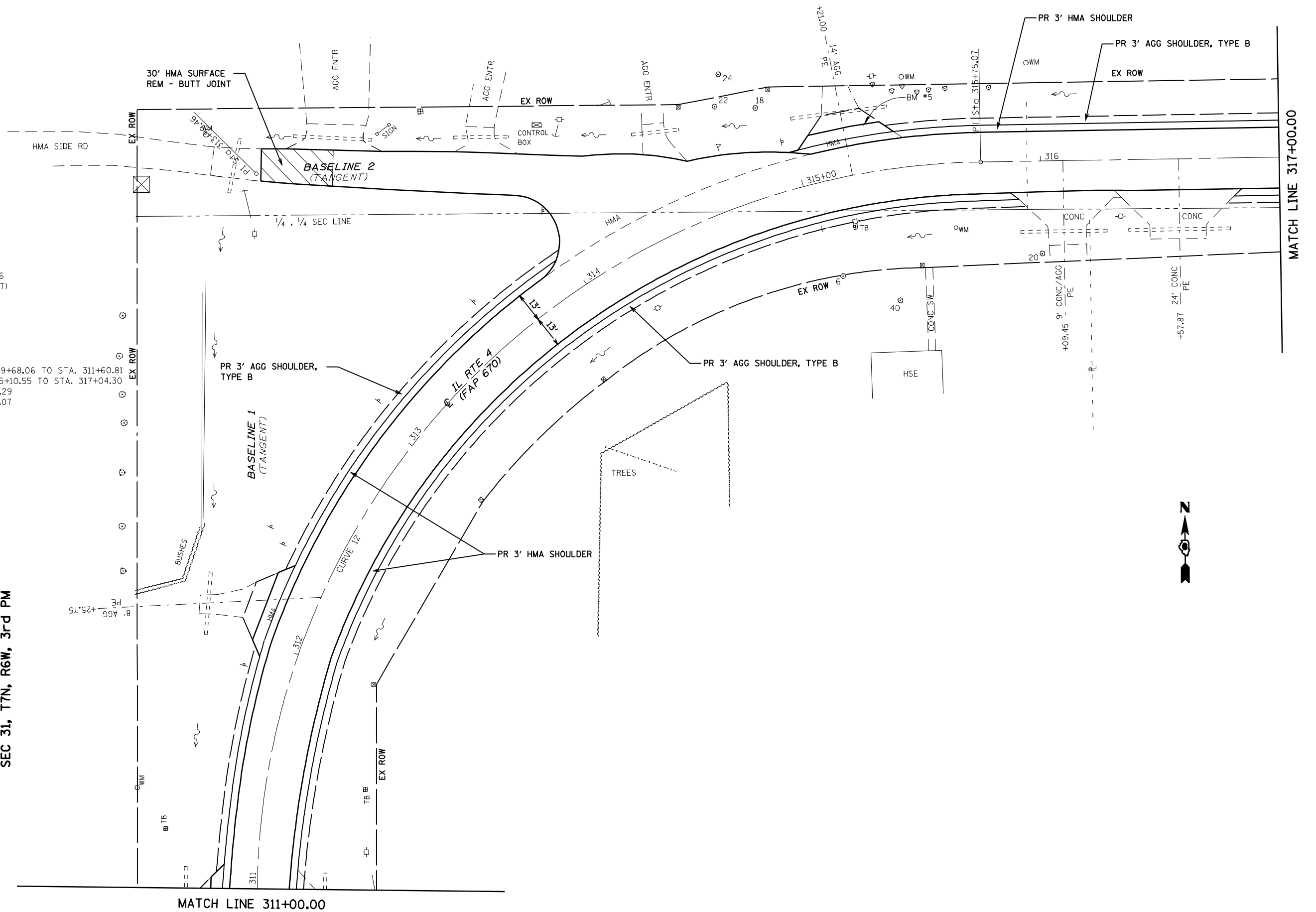


SEC 31, T7N, R6W, 3rd PM

EXIST. CURVE 12  
 PI STA. = 313+99.46  
 $\Delta = 89^\circ 08' 49''$  (RT)  
 $D = 18^\circ 37' 11''$   
 $R = 307.72'$   
 $T = 303.17'$   
 $L = 478.78'$   
 $E = 124.26'$   
 $e = 8.0\%$   
 $T.R. = 38.75'$   
 S.E. RUN = STA. 309+68.06 TO STA. 311+60.81  
 S.E. RUN = STA. 315+10.55 TO STA. 317+04.30  
 P.C. STA. = 310+96.29  
 P.T. STA. = 315+75.07



FILE NAME = C:\paw\work\PM\DOT\LAUGHLIN\071789\0672018-ht-plot.dgn

USER NAME = laughlinr1	DESIGNED -	REVISED -
PLOT SCALE = 40.0000' / IN.	DRAWN -	REVISED -
PLOT DATE = Apr-14-2010 07:56:36AM	CHECKED -	REVISED -
	DATE -	REVISED -

STATE OF ILLINOIS  
 DEPARTMENT OF TRANSPORTATION

PLAN SHEETS

SCALE: 1"=20' SHEET NO. 2 OF 25 SHEETS STA. 311+00.00 TO STA. 317+00.00

F.A. RTE.	SECTION	COUNTY	TOTAL SHEETS	SHEET NO.
8139	(30,JRS-3	MACOUPIN	45	11
CONTRACT NO. 72C18				
FED. ROAD DIST. NO. ILLINOIS FED. AID PROJECT				