

MATCH LINE 323+00.00

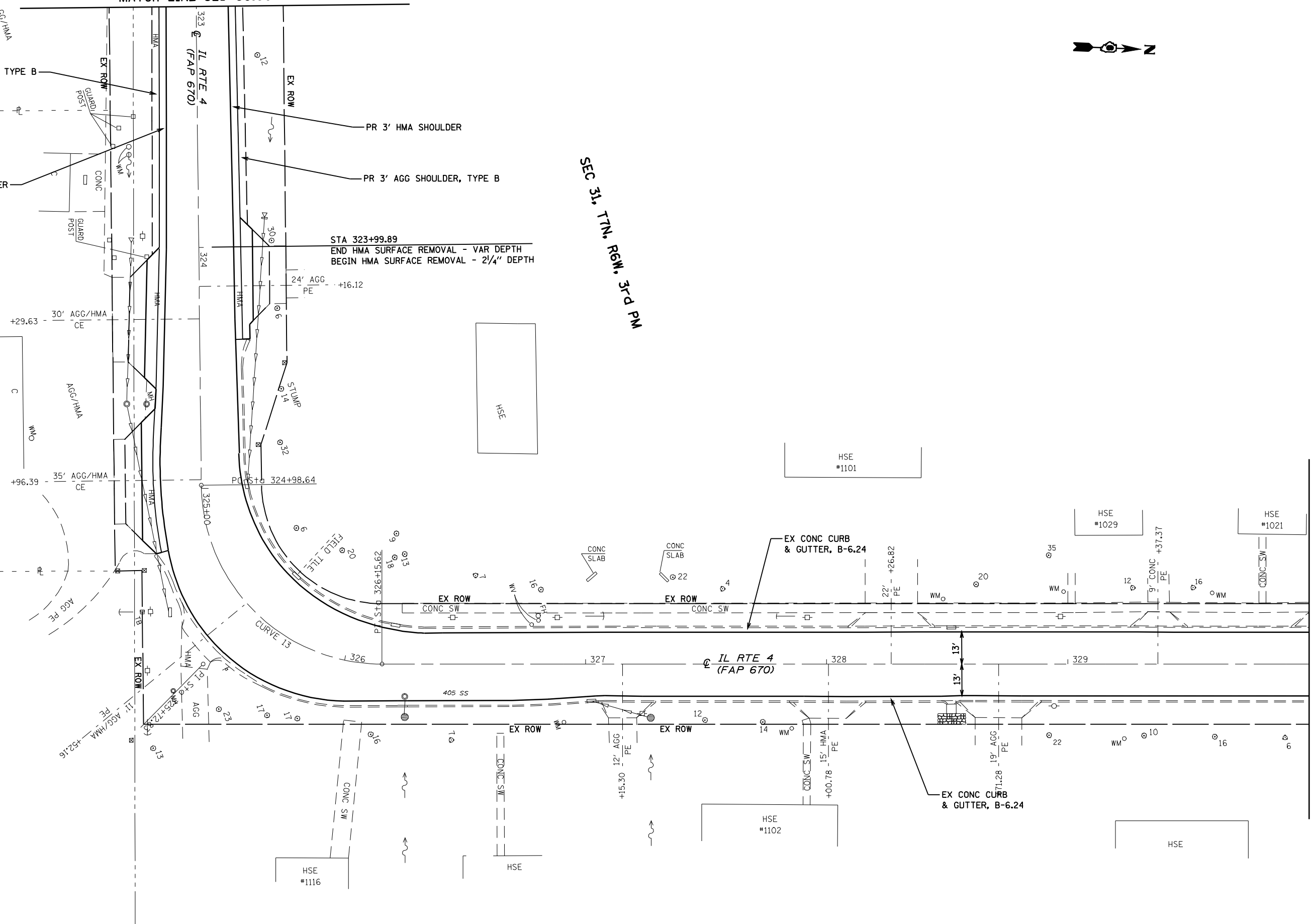


SEC 31, 17N, R6W, 31-D PM

PR 3' AGG SHOULDER, TYPE B
 PR 3' HMA SHOULDER
 PR 3' AGG SHOULDER, TYPE B

STA 323+99.89
 END HMA SURFACE REMOVAL - VAR DEPTH
 BEGIN HMA SURFACE REMOVAL - 2 1/4" DEPTH

EXIST. CURVE 13
 PI STA. = 325+72.83
 $\Delta = 89^\circ 23' 16''$ (LT)
 D = 76' 24' 46"
 R = 74.98'
 T = 74.19'
 L = 116.98'
 E = 30.50'
 @ = MATCH EXISTING
 T.R. = N.A.
 S.E. RUN = N.A.
 P.C. STA. = 324+98.64
 P.T. STA. = 326+15.62



MATCH LINE 330+00.00

FILE NAME = c:\pwworkspace\p1\DOT\LAUGH\INR\071789\0672018-ht-plot.dgn

USER NAME = laughlrr1	DESIGNED -	REVISED -
PLOT SCALE = 40.0000' / IN.	DRAWN -	REVISED -
PLOT DATE = Apr-14-2010 07:56:46AM	CHECKED -	REVISED -
	DATE -	REVISED -

STATE OF ILLINOIS
 DEPARTMENT OF TRANSPORTATION

PLAN SHEETS
 SCALE: 1"=20'
 SHEET NO. 4 OF 25 SHEETS
 STA. 323+00.00 TO STA. 330+00.00

F.A. RTE.	SECTION	COUNTY	TOTAL SHEETS	SHEET NO.
8139	(30,JRS-3	MACOUPIN	45	13
CONTRACT NO. 72C18				
FED. ROAD DIST. NO. ILLINOIS FED. AID PROJECT				