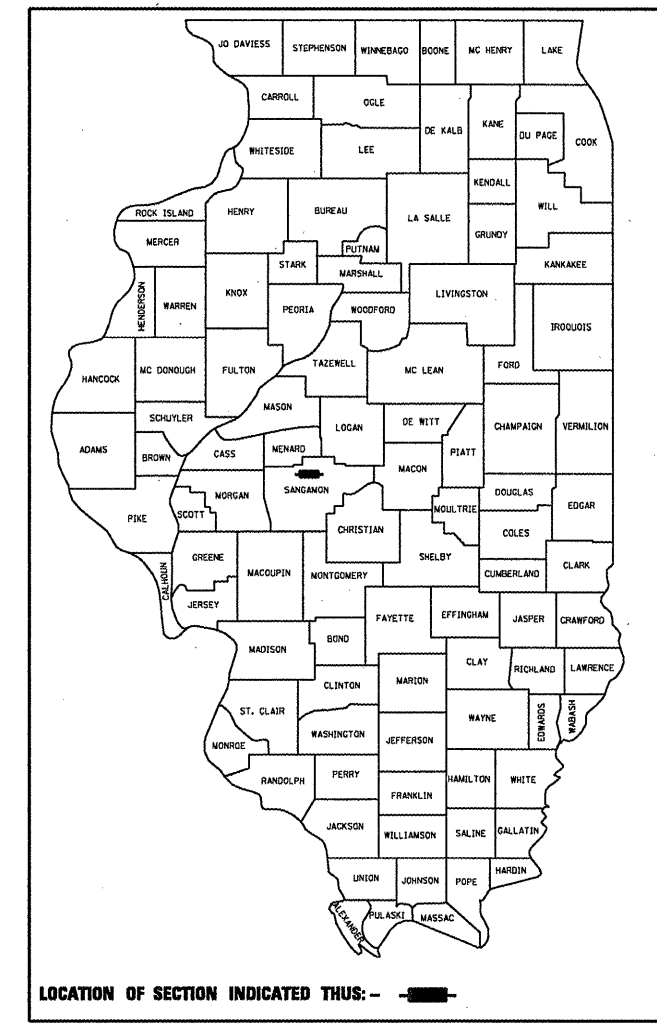


F.A.P. RTE.	SECTION	COUNTY	TOTAL SHEETS	SHEET NO.
658		SANGAMON	206	1
		ILLINOIS	CONTRACT NO. 72C35	

\* 1-1(RS, TS-1); 27RS-6; 102RS-4

D-96-012-09



LOCATION OF SECTION INDICATED THUS: -

# STATE OF ILLINOIS

## DEPARTMENT OF TRANSPORTATION

### DIVISION OF HIGHWAYS

# PROPOSED HIGHWAY PLANS

FOR INDEX OF SHEETS, SEE SHEET NO. 2

**FAP ROUTE 658, 662, 666**  
**SECTION 1-1(RS, TS-1); 27RS-6; 102RS-4**

**RESURFACING & INTERSECTION IMPROVEMENT**  
**SANGAMON COUNTY**

**STATION EQUATIONS**

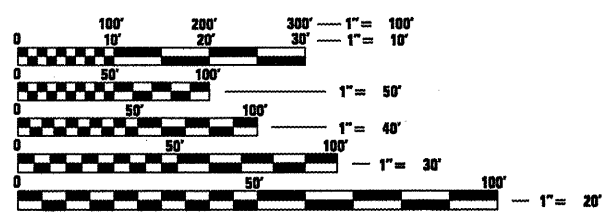
- 1 STA. 255+48.03 (BK) = STA. 255+42.57 (AH)  
IL 4 (VETERANS PARKWAY)
- 2 STA. 282+90.26 (BK) = STA. 382+90.26 (AH)  
SOUTHBOUND LANES, IL 4 (VETERANS PARKWAY)
- 3 STA. 282+90.27 (BK) = STA. 482+90.26 (AH)  
NORTHBOUND LANES, IL 4 (VETERANS PARKWAY)
- 4 STA. 15+17.25 (BK) = STA. 144+00.00 (AH)  
BL-55 (PEORIA RD.)
- 5 STA. 78+45.12 (BK) = STA. 1+56.70 (AH)  
BL-55 (PEORIA RD.)
- 6 STA. 644+98.50 (BK) = STA. 6+00.00 (AH)  
OLD IL 29 (WALNUT ST./J. DAVID JONES PKWY)
- 7 STA. 612+16.70 (BK) = STA. 612+15.95 (AH)  
OLD IL 29 (WALNUT ST./J. DAVID JONES PKWY)
- 8 STA. 535+21.46 (BK) = STA. 535+20.39 (AH)  
IL 29 (WALNUT ST./J. DAVID JONES PKWY)

**ADT 10126**  
**FAP 666 (I-55 /PEORIA RD.)**  
 %PV = 95.3  
 %SU = 3.4  
 %MU = 1.3

**ADT 13982**  
**FAP 662 (IL 4 /VETERANS PKWY)**  
 %PV = 94.3  
 %SU = 3.6  
 %MU = 2.1

**ADT 18300**  
**FAP 662 (IL 4/IL 29 INTERSECTION)**  
 %PV = 94.3  
 %SU = 3.4  
 %MU = 2.3

**ADT 10256**  
**FAP 658 (OLD IL 29)**  
 %PV = 95.3  
 %SU = 2.8  
 %MU = 1.9



FULL SIZE PLANS HAVE BEEN PREPARED USING STANDARD ENGINEERING SCALES. REDUCED SIZED PLANS WILL NOT CONFORM TO STANDARD SCALES. IN MAKING MEASUREMENTS ON REDUCED PLANS, THE ABOVE SCALES MAY BE USED.

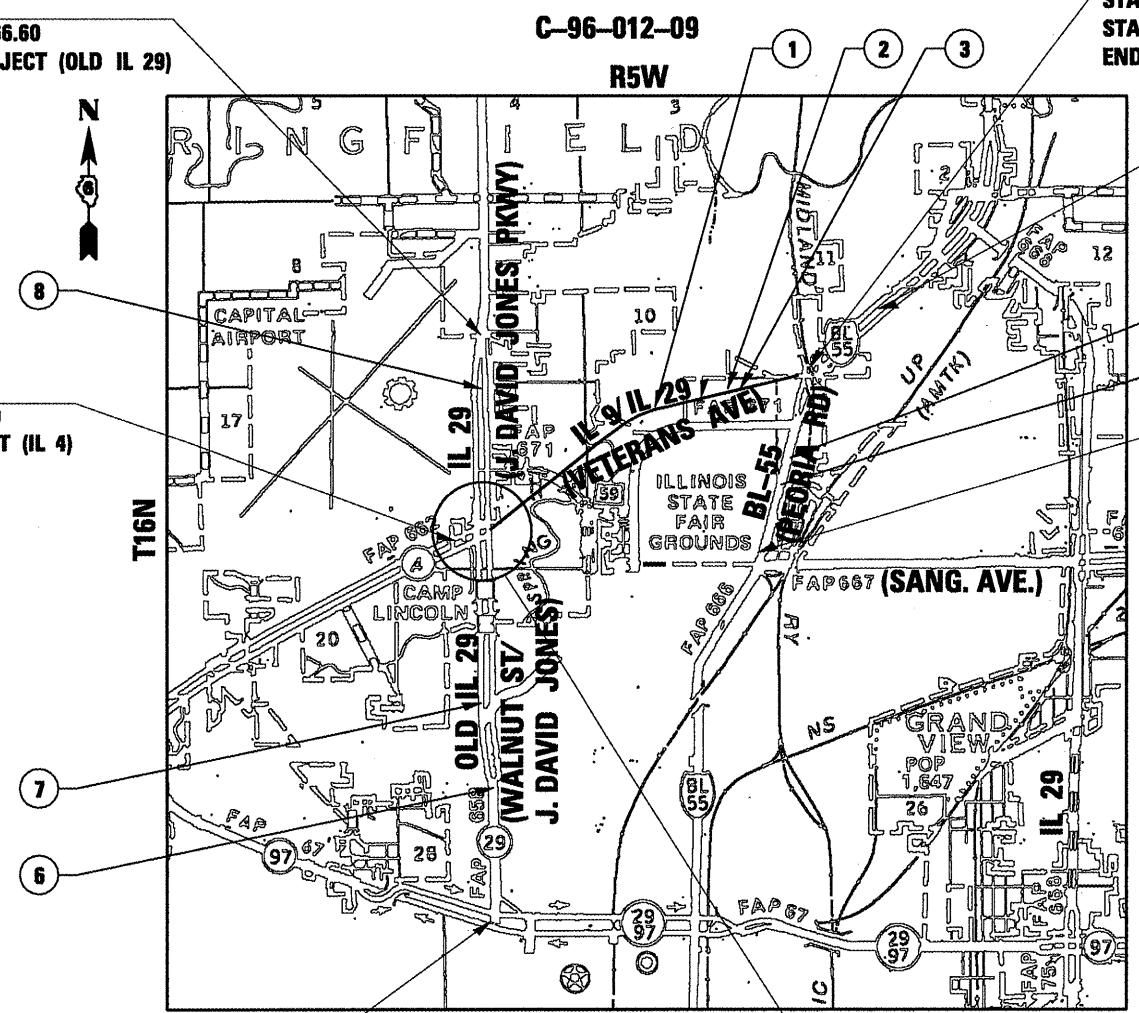
**J.U.L.I.E.**  
 JOINT UTILITY LOCATION INFORMATION FOR EXCAVATION  
 1-800-892-0123  
 OR 811

**PROJECT ENGINEER: JOHN NEGANGARD (217) 782-6990**  
**PROJECT MANAGER: JULIET SHOULTZ (217) 785-2739**

**CONTRACT NO. 72C35**

**SECTION A**  
 STA. 531+66.60  
 BEGIN PROJECT (OLD IL 29)

**SECTION B**  
 STA. 111+50.00  
 BEGIN PROJECT (IL 4)



**SECTION B**  
 STA. 394+69.00 (SB)  
 STA. 494+93.00 (NB)  
 END PROJECT (IL 4)

**SECTION C**  
 STA. 512+84.00 (SB)  
 STA. 412+27.00 (NB)  
 END PROJECT  
 (BL 55 /PEORIA RD.)

**SECTION C**  
 STA. 52+40.00  
 BEGIN PROJECT (BL 55 /PEORIA RD.)

**SECTION A**  
 STA. 26+67.40  
 END PROJECT (OLD IL 29)

GROSS LENGTH = 31,041.8 FT. = 5.88 MILE  
 NET LENGTH = 31,204.8 FT. = 5.91 MILE

**PROJECT INCLUDES INTERSECTION:**  
 VETERANS PKWY. (IL 4-WEST; IL 4/IL 29-EAST)  
 & J. DAVID JONES (OLD IL 29-SOUTH;  
 IL 29-NORTH)

STATE OF ILLINOIS  
 DEPARTMENT OF TRANSPORTATION  
 DIVISION OF HIGHWAYS

SUBMITTED April 29 2010  
By [Signature]  
 DEPUTY DIRECTOR OF HIGHWAYS, REGION ENGINEER

May 7 2010  
Scott E. Stitt, P.E.  
 acting ENGINEER OF DESIGN AND ENVIRONMENT

May 7 2010  
Christine M. Roeder  
 DIRECTOR OF HIGHWAYS, CHIEF ENGINEER

**PRINTED BY THE AUTHORITY  
 OF THE STATE OF ILLINOIS**