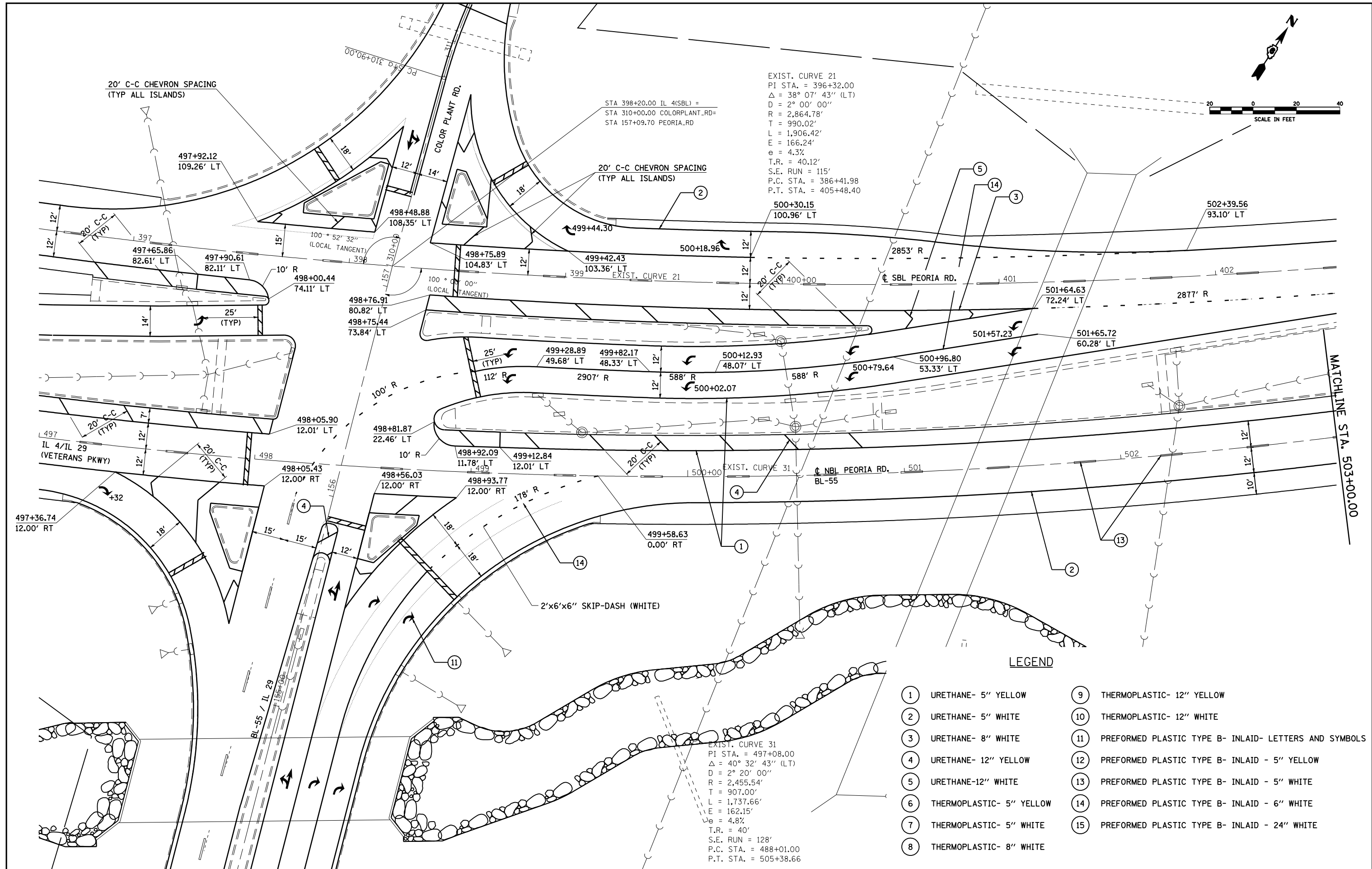


EXIST. CURVE 21
 PI STA. = 396+32.00
 $\Delta = 38^\circ 07' 43''$ (LT)
 $D = 2^\circ 00' 00''$
 $R = 2,864.78'$
 $T = 990.02'$
 $L = 1,906.42'$
 $E = 166.24'$
 $e = 4.3\%$
 $T.R. = 40.12'$
 $S.E. RUN = 115'$
 $P.C. STA. = 386+41.98$
 $P.T. STA. = 405+48.40$

EXIST. CURVE 31
 PI STA. = 497+08.00
 $\Delta = 40^\circ 32' 43''$ (LT)
 $D = 2^\circ 20' 00''$
 $R = 2,455.54'$
 $T = 907.00'$
 $L = 1,737.66'$
 $E = 162.15'$
 $e = 4.8\%$
 $T.R. = 40'$
 $S.E. RUN = 128'$
 $P.C. STA. = 488+01.00$
 $P.T. STA. = 505+38.66$

LEGEND

① URETHANE- 5" YELLOW	⑨ THERMOPLASTIC- 12" YELLOW
② URETHANE- 5" WHITE	⑩ THERMOPLASTIC- 12" WHITE
③ URETHANE- 8" WHITE	⑪ PREFORMED PLASTIC TYPE B- INLAID- LETTERS AND SYMBOLS
④ URETHANE- 12" YELLOW	⑫ PREFORMED PLASTIC TYPE B- INLAID - 5" YELLOW
⑤ URETHANE-12" WHITE	⑬ PREFORMED PLASTIC TYPE B- INLAID - 5" WHITE
⑥ THERMOPLASTIC- 5" YELLOW	⑭ PREFORMED PLASTIC TYPE B- INLAID - 6" WHITE
⑦ THERMOPLASTIC- 5" WHITE	⑮ PREFORMED PLASTIC TYPE B- INLAID - 24" WHITE
⑧ THERMOPLASTIC- 8" WHITE	



FILE NAME =	USER NAME = laughlinr1	DESIGNED -	REVISED -	STATE OF ILLINOIS DEPARTMENT OF TRANSPORTATION	PLAN SHEET - SECTION "C" (PEORIA RD.)		F.A.P. RTE.	SECTION	COUNTY	TOTAL SHEETS	SHEET NO.
et:\pwork\pwork\LAUGHLINRL\dms47710\672C35-SHT-plan-peoria.dgn		DRAWN -	REVISED -		658	.	SANGAMON	206	115		
PLOT SCALE = 40.0000' / IN.		CHECKED -	REVISED -		CONTRACT NO. 72C35						
PLOT DATE = Apr-30-2010 02:34:55PM		DATE -	REVISED -		ILLINOIS FED. AID PROJECT						