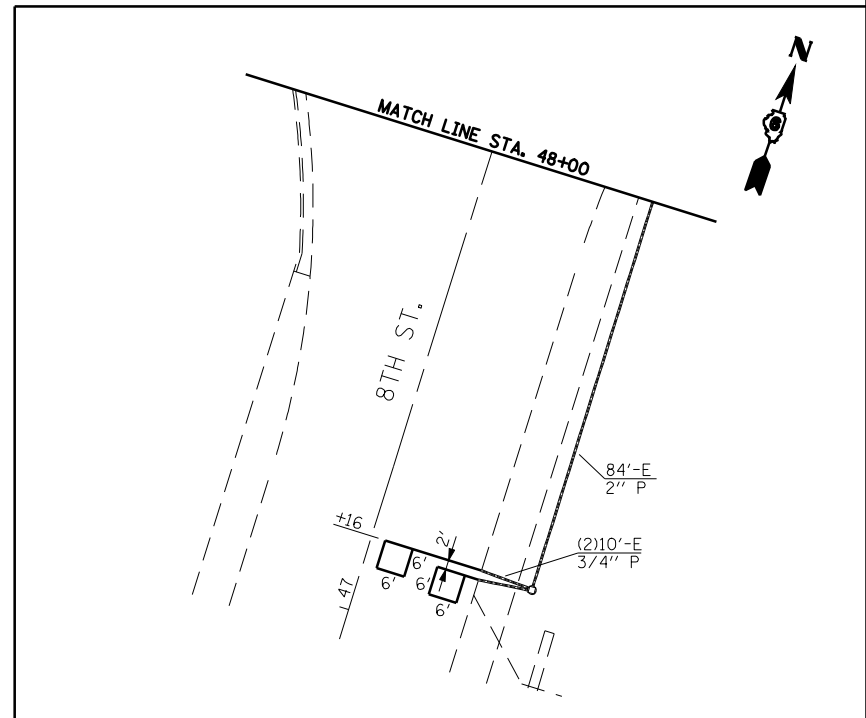
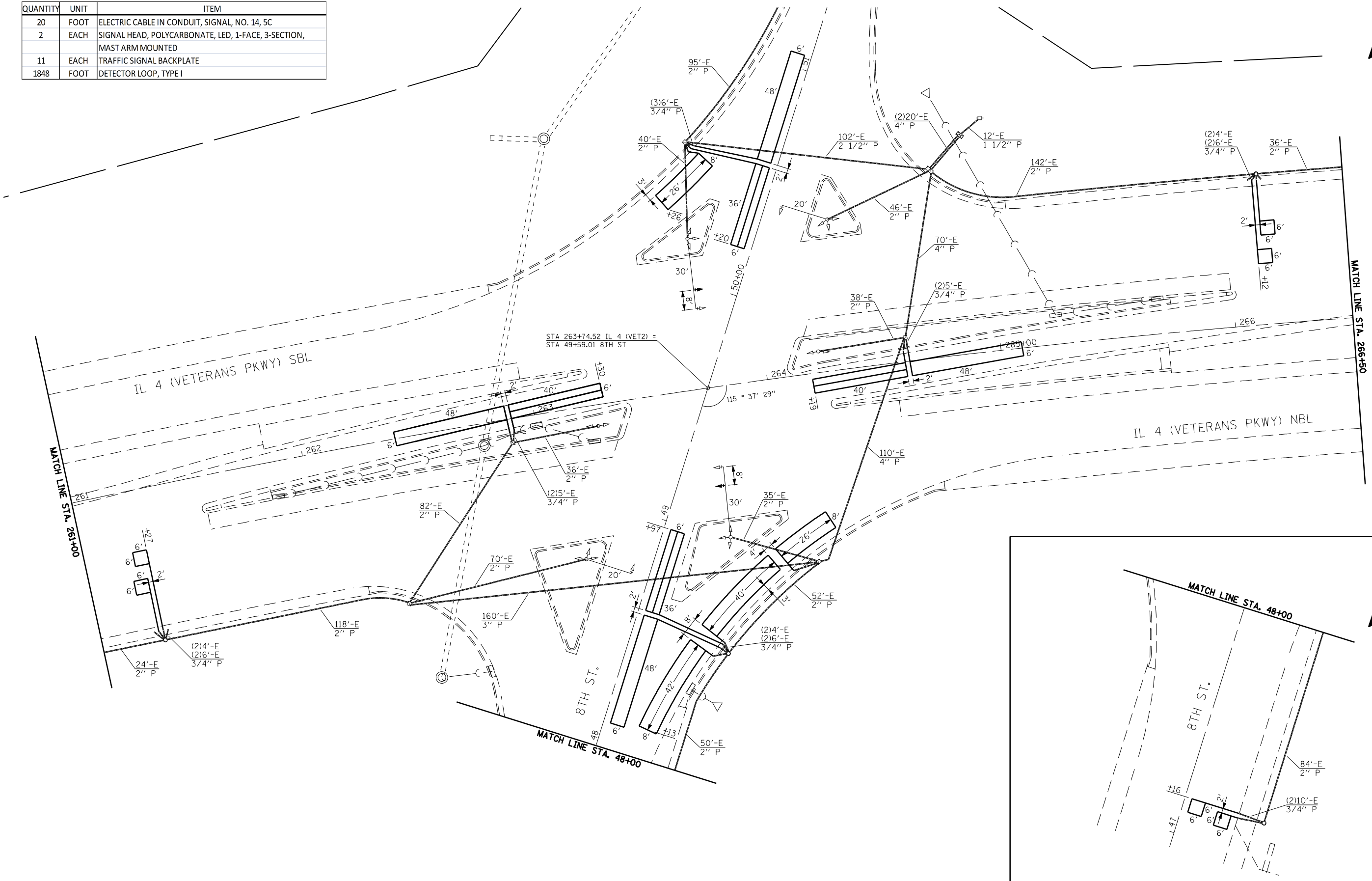


QUANTITY	UNIT	ITEM
20	FOOT	ELECTRIC CABLE IN CONDUIT, SIGNAL, NO. 14, 5C
2	EACH	SIGNAL HEAD, POLYCARBONATE, LED, 1-FACE, 3-SECTION, MAST ARM MOUNTED
11	EACH	TRAFFIC SIGNAL BACKPLATE
1848	FOOT	DETECTOR LOOP, TYPE I



FILE NAME =	USER NAME = laughlinr1	DESIGNED -	REVISED -	STATE OF ILLINOIS DEPARTMENT OF TRANSPORTATION	PROPOSED PLAN IL 4 (VETERANS PKWY.) & 8TH ST.	F.A.P. RTE.	SECTION	COUNTY	TOTAL SHEETS	SHEET NO.
et:\pw\work\PWIDOT\LAUGHLINRL\0203328\672C35_sht.ts_09.dgn	PLOT SCALE = 40.0000' / IN.	DRAWN -	REVISED -			* 1-1RS,TS-1, 2TRS-6, 102RS-4	SANGAMON	206	175	
	PLOT DATE = Apr-29-2010 02:59:44PM	CHECKED -	REVISED -			* FAP 666 (BL-55), FAP 662 (IL 4)	CONTRACT NO. 72C35			
		DATE -	REVISED -			* FAP 688 (IL 29)	ILLINOIS FED. AID PROJECT			

SCALE: SHEET NO. 5 OF 33 SHEETS STA. TO STA.