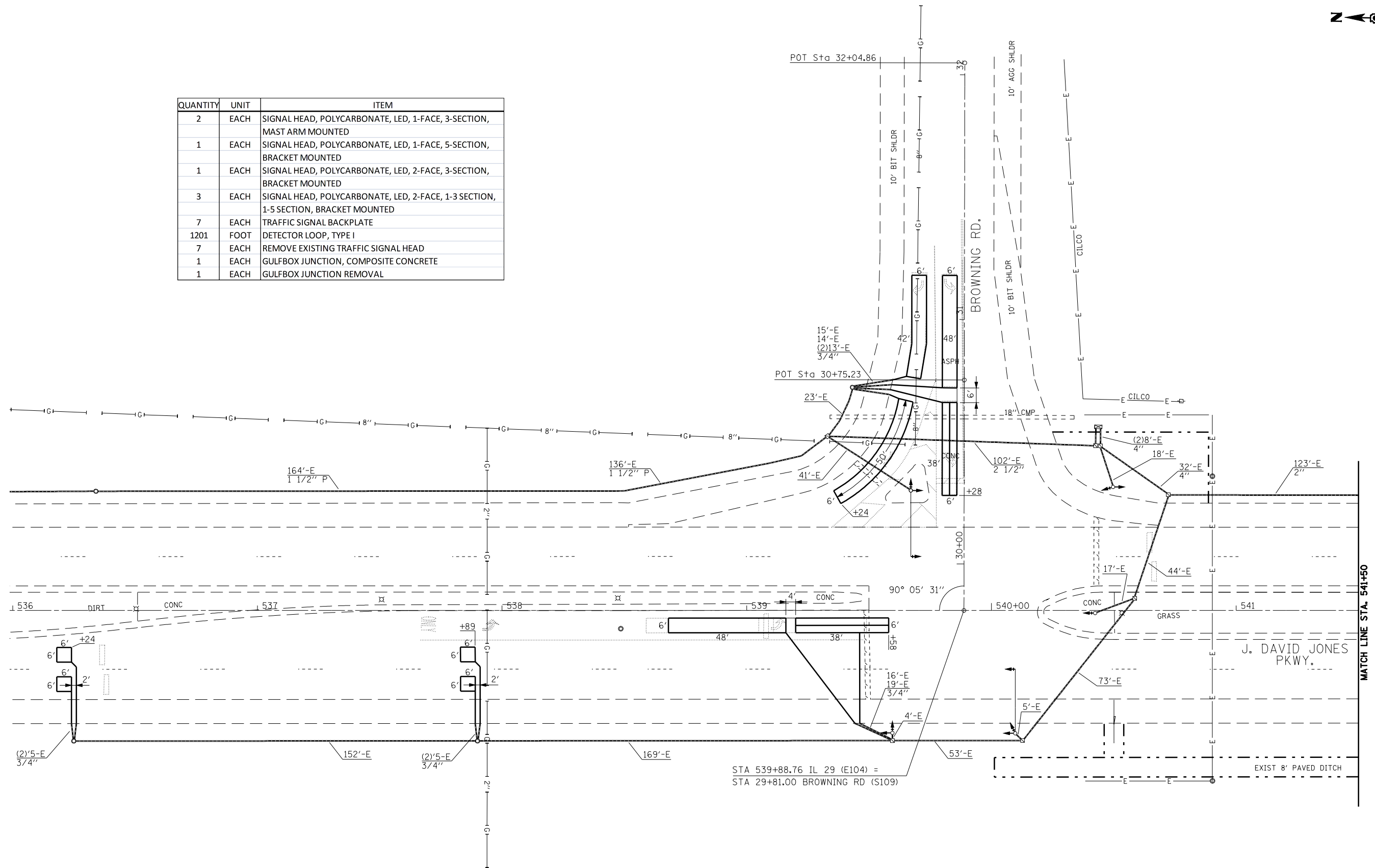




QUANTITY	UNIT	ITEM
2	EACH	SIGNAL HEAD, POLYCARBONATE, LED, 1-FACE, 3-SECTION, MAST ARM MOUNTED
1	EACH	SIGNAL HEAD, POLYCARBONATE, LED, 1-FACE, 5-SECTION, BRACKET MOUNTED
1	EACH	SIGNAL HEAD, POLYCARBONATE, LED, 2-FACE, 3-SECTION, BRACKET MOUNTED
3	EACH	SIGNAL HEAD, POLYCARBONATE, LED, 2-FACE, 1-3 SECTION, 1-5 SECTION, BRACKET MOUNTED
7	EACH	TRAFFIC SIGNAL BACKPLATE
1201	FOOT	DETECTOR LOOP, TYPE I
7	EACH	REMOVE EXISTING TRAFFIC SIGNAL HEAD
1	EACH	GULFBOX JUNCTION, COMPOSITE CONCRETE
1	EACH	GULFBOX JUNCTION REMOVAL



**STATE OF ILLINOIS
DEPARTMENT OF TRANSPORTATION**

**PROPOSED PLAN
IL 29 (J. DAVID JONES PKWY.) & BROWNING RD.**

SCALE: SHEET NO. 22 OF 33 SHEETS STA. TO STA.

F.A.P. RTE.	SECTION	COUNTY	TOTAL SHEETS	SHEET NO.
* 1-1RS,TS-1, 2TRS-6, 102RS-4		SANGAMON	206	192
* FAP 666 (IL-55), FAP 662 (IL 4)				
* FAP 658 (IL 29)		CONTRACT NO. 72C35		

ILLINOIS FED. AID PROJECT