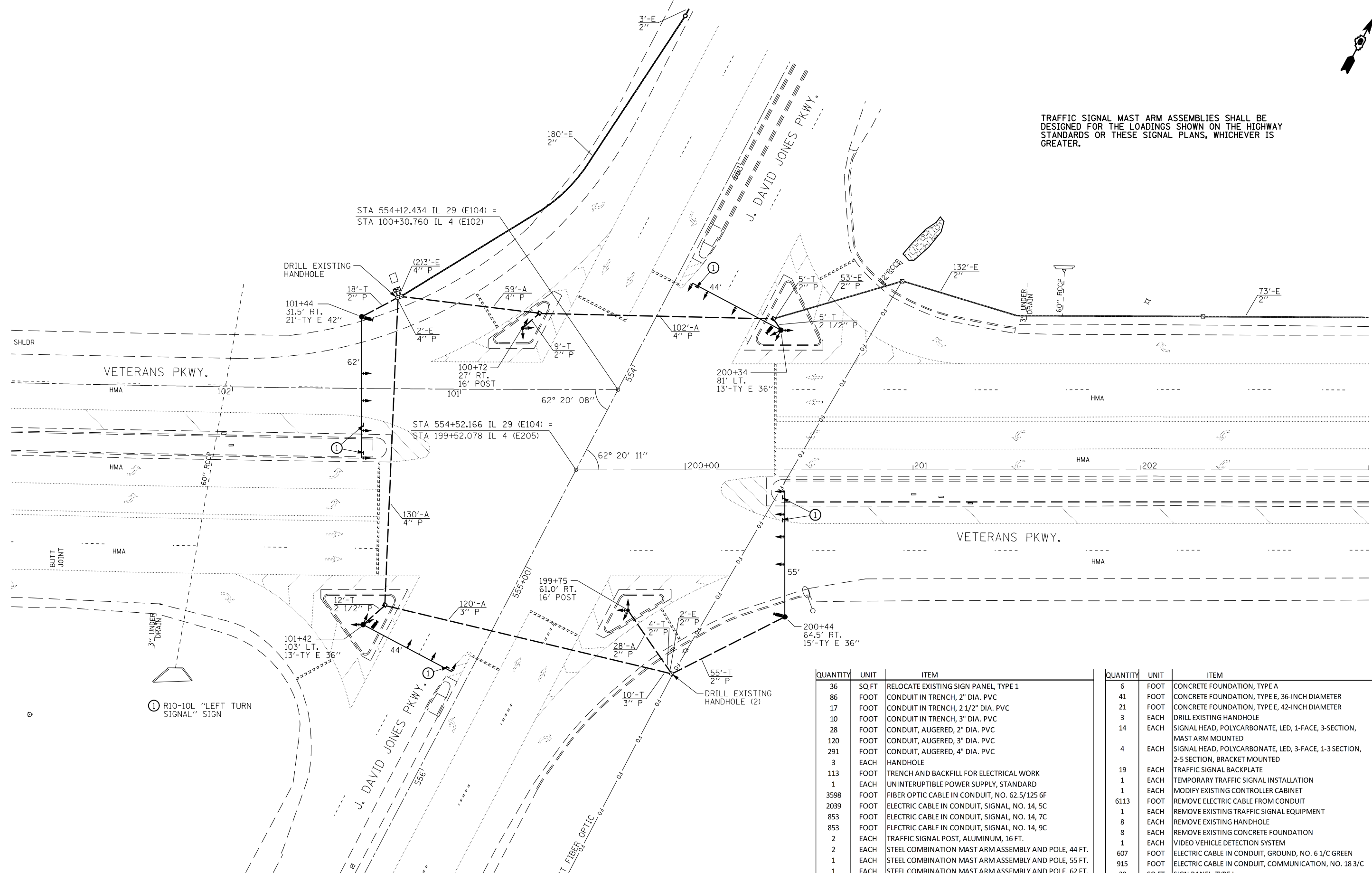




TRAFFIC SIGNAL MAST ARM ASSEMBLIES SHALL BE DESIGNED FOR THE LOADINGS SHOWN ON THE HIGHWAY STANDARDS OR THESE SIGNAL PLANS, WHICHEVER IS GREATER.



① R10-10L "LEFT TURN SIGNAL" SIGN

QUANTITY	UNIT	ITEM
36	SQ FT	RELOCATE EXISTING SIGN PANEL, TYPE 1
86	FOOT	CONDUIT IN TRENCH, 2" DIA. PVC
17	FOOT	CONDUIT IN TRENCH, 2 1/2" DIA. PVC
10	FOOT	CONDUIT IN TRENCH, 3" DIA. PVC
28	FOOT	CONDUIT, AUGERED, 2" DIA. PVC
120	FOOT	CONDUIT, AUGERED, 3" DIA. PVC
291	FOOT	CONDUIT, AUGERED, 4" DIA. PVC
3	EACH	HANDHOLE
113	FOOT	TRENCH AND BACKFILL FOR ELECTRICAL WORK
1	EACH	UNINTERRUPTIBLE POWER SUPPLY, STANDARD
3598	FOOT	FIBER OPTIC CABLE IN CONDUIT, NO. 62.5/125 6F
2039	FOOT	ELECTRIC CABLE IN CONDUIT, SIGNAL, NO. 14, 5C
853	FOOT	ELECTRIC CABLE IN CONDUIT, SIGNAL, NO. 14, 7C
853	FOOT	ELECTRIC CABLE IN CONDUIT, SIGNAL, NO. 14, 9C
2	EACH	TRAFFIC SIGNAL POST, ALUMINUM, 16 FT.
2	EACH	STEEL COMBINATION MAST ARM ASSEMBLY AND POLE, 44 FT.
1	EACH	STEEL COMBINATION MAST ARM ASSEMBLY AND POLE, 55 FT.
1	EACH	STEEL COMBINATION MAST ARM ASSEMBLY AND POLE, 62 FT.

QUANTITY	UNIT	ITEM
6	FOOT	CONCRETE FOUNDATION, TYPE A
41	FOOT	CONCRETE FOUNDATION, TYPE E, 36-INCH DIAMETER
21	FOOT	CONCRETE FOUNDATION, TYPE E, 42-INCH DIAMETER
3	EACH	DRILL EXISTING HANDHOLE
14	EACH	SIGNAL HEAD, POLYCARBONATE, LED, 1-FACE, 3-SECTION, MAST ARM MOUNTED
4	EACH	SIGNAL HEAD, POLYCARBONATE, LED, 3-FACE, 1-3 SECTION, 2-5 SECTION, BRACKET MOUNTED
19	EACH	TRAFFIC SIGNAL BACKPLATE
1	EACH	TEMPORARY TRAFFIC SIGNAL INSTALLATION
1	EACH	MODIFY EXISTING CONTROLLER CABINET
6113	FOOT	REMOVE ELECTRIC CABLE FROM CONDUIT
1	EACH	REMOVE EXISTING TRAFFIC SIGNAL EQUIPMENT
8	EACH	REMOVE EXISTING HANDHOLE
8	EACH	REMOVE EXISTING CONCRETE FOUNDATION
1	EACH	VIDEO VEHICLE DETECTION SYSTEM
607	FOOT	ELECTRIC CABLE IN CONDUIT, GROUND, NO. 6 1/C GREEN
915	FOOT	ELECTRIC CABLE IN CONDUIT, COMMUNICATION, NO. 18 3/C
30	SQ FT	SIGN PANEL, TYPE I

FILE NAME =	USER NAME = laughlin1	DESIGNED -	REVISED -
et:\pw\work\PWIDOT\LAUGHLIN\ld\0203328\0672C35.sht.ts_32.dgn		DRAWN -	REVISED -
PLOT SCALE = 40.0000' / IN.		CHECKED -	REVISED -
PLOT DATE = Apr-29-2010 03:01:04PM		DATE -	REVISED -

**STATE OF ILLINOIS
DEPARTMENT OF TRANSPORTATION**

**PROPOSED PLAN
IL 29 (J. DAVID JONES PKWY.) & IL 4 (VETERANS PKWY.)**

SCALE: SHEET NO. 28 OF 33 SHEETS STA. TO STA.

F.A.P. RTE.	SECTION	COUNTY	TOTAL SHEETS	SHEET NO.
* 1-1RS, TS-1, 2TRS-6, 102RS-4		SANGAMON	206	198
* FAP 666 (BL-55), FAP 662 (IL 4)				
* FAP 688 (IL 29)				
ILLINOIS FED. AID PROJECT			CONTRACT NO. 72C35	