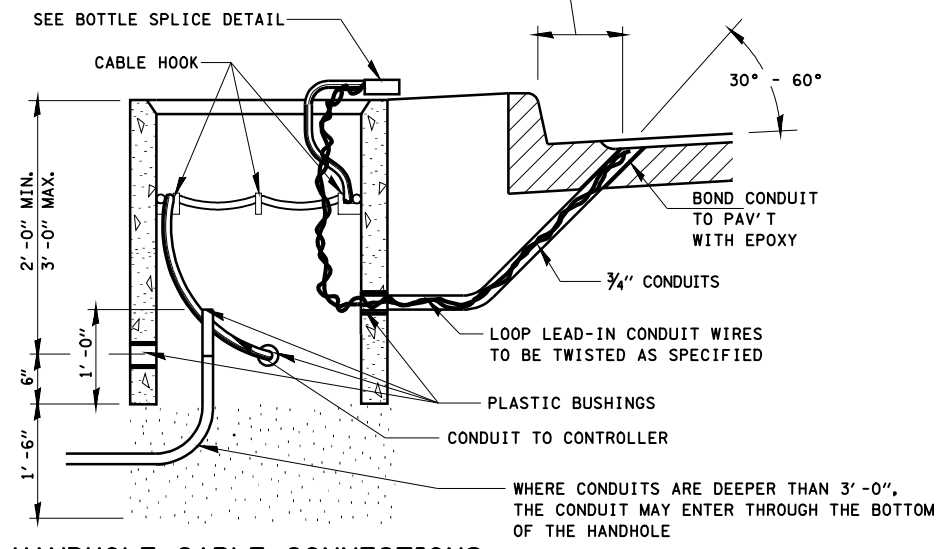
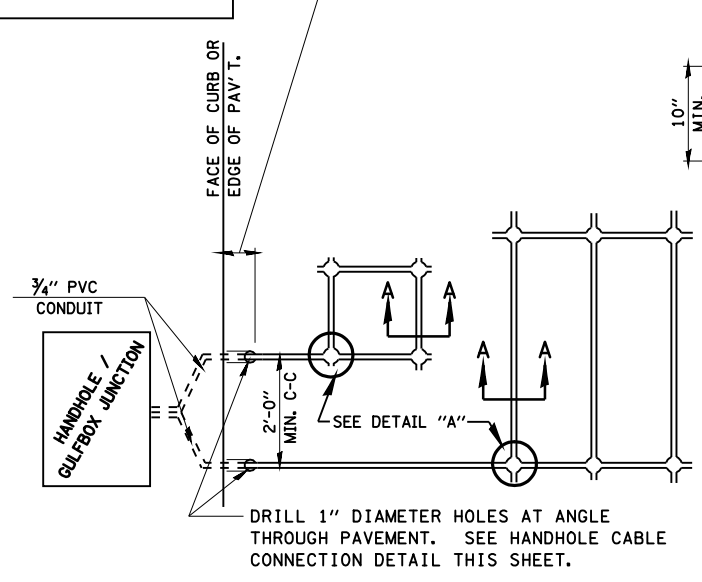


LENGTH OF SLACK FOR LOOP LEAD-INS SHALL PROVIDE FOR MAKING THE SPLICE ON TOP OF THE HANDHOLE AND ONE COMPLETE LOOP OF THE INTERIOR OF THE HANDHOLE, THE SPLICE SHALL BE SUPPORTED BY A CABLE HOOK.

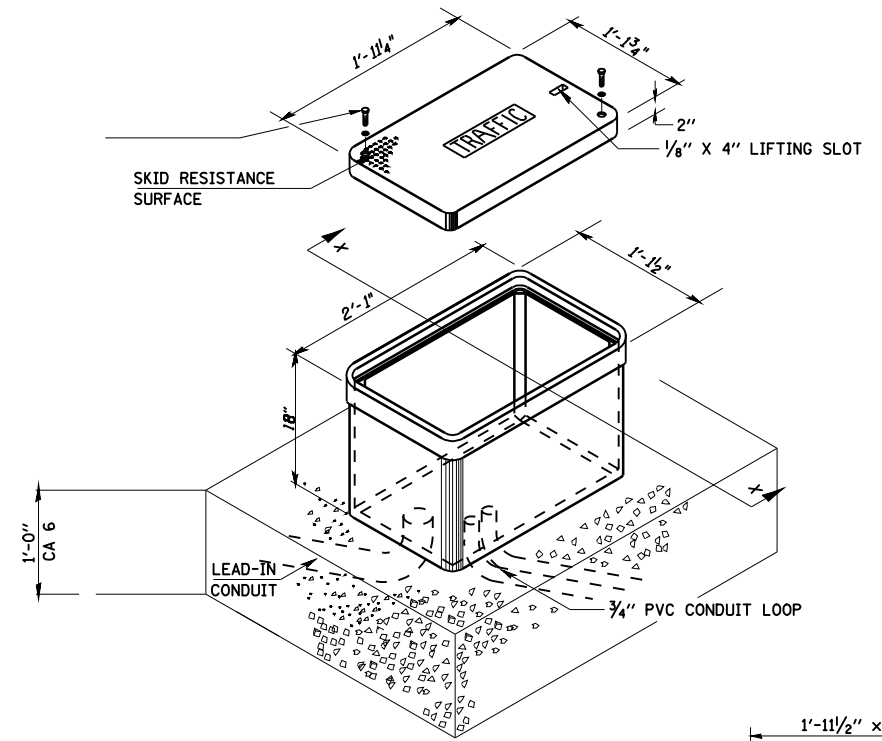
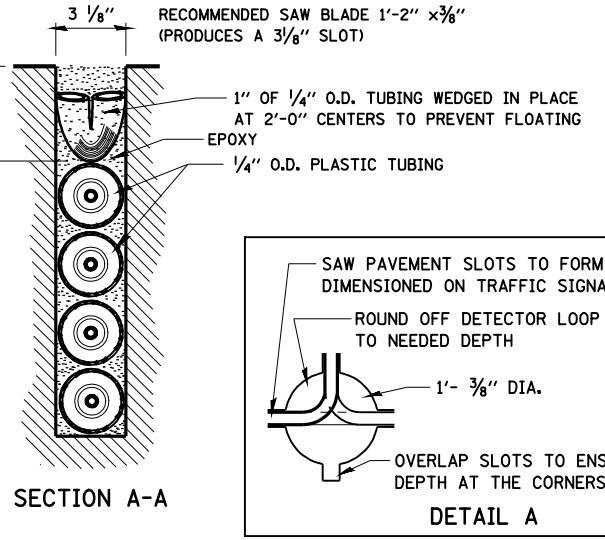
THE LOOP LEAD-IN CONDUIT HOLES SHALL BE PLACED AS CLOSE TO THE CURB AS POSSIBLE TO PERMIT SAW OVERLAP WITHOUT SCARRING FACE OF CURB. IN NON-CURB LOCATIONS THE DISTANCE SHALL NOT BE LESS THAN 6".



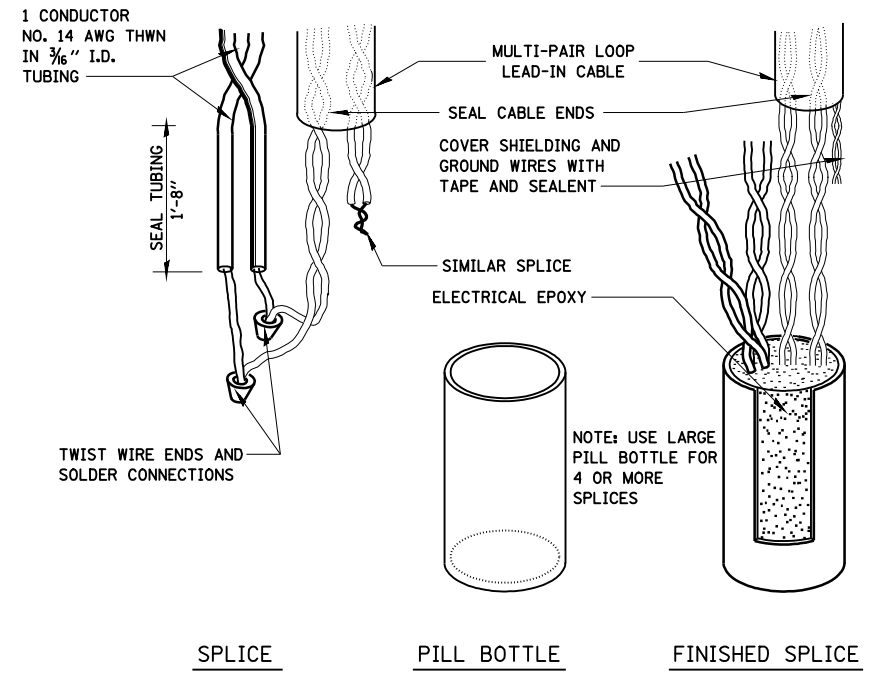
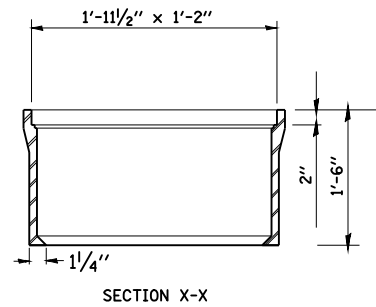
HANDHOLE CABLE CONNECTIONS



PAVEMENT SAWING DETAIL FOR TUBE ENCASED DETECTOR LOOP WIRE



GULFBOX JUNCTION



BOTTLE SPLICE DETAIL

FILE NAME =	USER NAME = laughlinr1	DESIGNED -	REVISED -
et:\pw\work\PWIDOT\LAUGHLINRL\0203328\0672C35_sht.ts_36.dgn		DRAWN -	REVISED -
		CHECKED -	REVISED -
		DATE -	REVISED -
PLOT SCALE = 40.0001' / IN.			
PLOT DATE = Apr-29-2010 03:01:17PM			

**STATE OF ILLINOIS
DEPARTMENT OF TRANSPORTATION**

**TRAFFIC SIGNAL DETECTOR
LOOP DETAILS**

SCALE: SHEET NO. 32 OF 33 SHEETS STA. TO STA.

F.A.P. RTE.	SECTION	COUNTY	TOTAL SHEETS	SHEET NO.
* 1-1RS,TS-1, 2TRS-6, 102RS-4		SANGAMON	206	202
* FAP 666 (BL-55), FAP 662 (IL 4)				
* FAP 658 (IL 29)				
ILLINOIS FED. AID PROJECT			CONTRACT NO. 72C35	