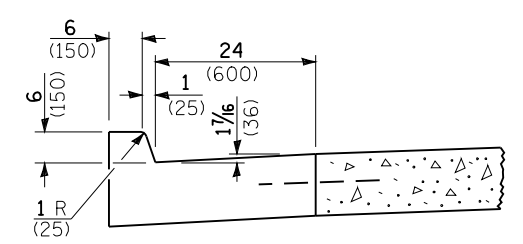


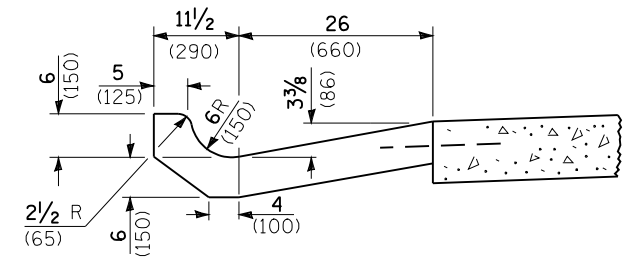
Welded wire fabric weighing not less than 58 lbs./100 sq. ft. (2.83 kg/m<sup>2</sup>) to begin here.

Edge of outlet to conform to the slope of shoulder

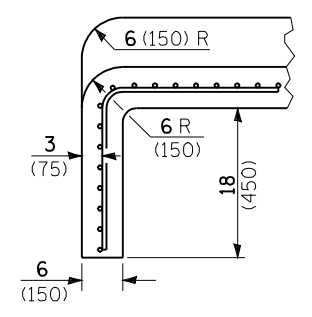
PLAN



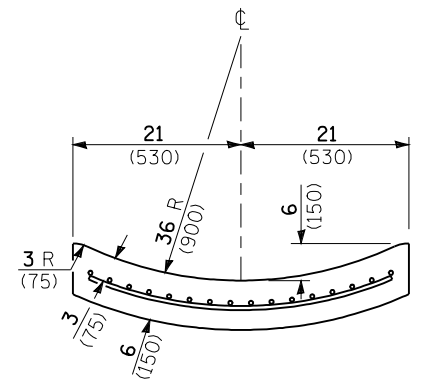
SECTION A-A



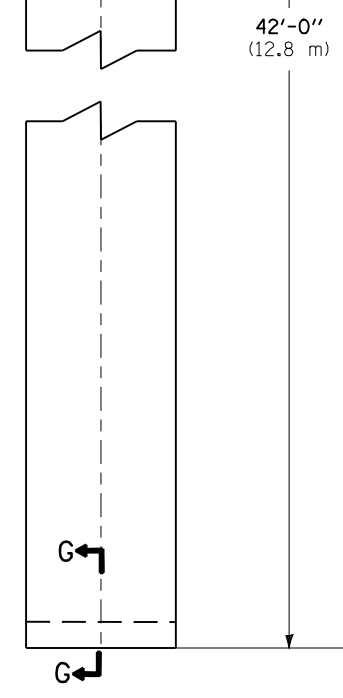
SECTION B-B



SECTION G-G



SECTION F-F



STANDARD OUTLET

GENERAL NOTES

- Tie bars shall be No. 6 (No. 19) at 24 (600) centers unless otherwise shown.
- Gutter outlet shall be tied to the pavement in accordance with details for longitudinal construction joint shown on Standard 420001.
- The Gutter outlet shall follow the existing roadway foreslope. The Earth Excavation shall be included in the cost of the CLASS I CONCRETE (OUTLET).

All dimensions are in inches (millimeters) unless otherwise shown.

**OUTLETS FOR CONC. CURB AND GUTTER TYPE B-6.24 (B-15.60)**

FILE NAME =	USER NAME = laughlinr1	DESIGNED -	REVISED -	<b>STATE OF ILLINOIS DEPARTMENT OF TRANSPORTATION</b>	<b>CLASS SI CONCRETE OUTLET DETAIL</b>				F.A.P. RTE. 662	SECTION *	COUNTY SANGAMON	TOTAL SHEETS 206	SHEET NO. 205
et:\pw\work\PWIDOT\LAUGHLINRL\dms47710\672C35-sht-outlet-detail.dgn	PLOT SCALE = 40.0000' / IN.	DRAWN -	REVISED -		SCALE:	SHEET NO.	OF SHEETS	STA.	TO STA.	CONTRACT NO.			
	PLOT DATE = Apr-30-2010 07:06:10AM	CHECKED -	REVISED -		ILLINOIS FED. AID PROJECT								
		DATE -	REVISED -		* 1-1(RS,TS)-1)27RS-6;79Z&102RS-4								