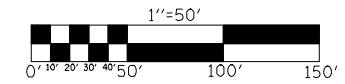
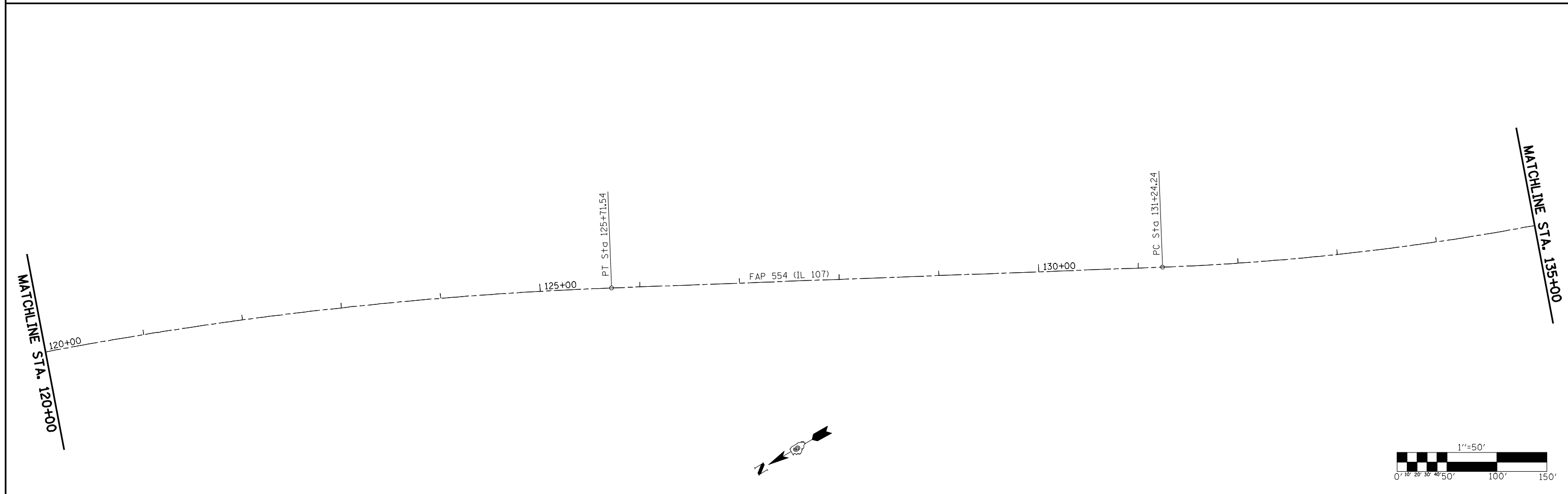


EXIST. CURVE DATA
 PI STA. = 119+00.38
 Δ = 20° 21' 00" (RT)
 D = 1° 30' 00"
 R = 3,819.97'
 T = 685.60'
 L = 1,356.75'
 E = 61.04'
 P.C. STA. = 112+14.78
 P.T. STA. = 125+71.54
 e = 2.5%
 ATTAIN SUPER
 STA. 111+69 TO STA. 112+59
 REMOVE SUPER
 STA. 125+25 TO STA. 126+15

PROP. S.E. DATA
 e = 2.5%
 T.R. = 40'
 S.E. RUN = 66'



| | | | |
|--|------------------------------------|------------|-----------|
| FILE NAME = | USER NAME = laughlinr1 | DESIGNED - | REVISED - |
| er:\pwwork\pwidot\LAUGHLINRL\0200040\672C37-shr-plan.dgn | | DRAWN - | REVISED - |
| | PLOT SCALE = 100.0000' / IN. | CHECKED - | REVISED - |
| | PLOT DATE = Apr-08-2010 03:18:54PM | DATE - | REVISED - |

**STATE OF ILLINOIS
 DEPARTMENT OF TRANSPORTATION**

PLAN SHEET FAP 554 (ILLINOIS 107)

SCALE: 1" = 50' SHEET NO. OF SHEETS STA. 105+00 TO STA. 135+00

| F.A.P. RTE. | SECTION | COUNTY | TOTAL SHEETS | SHEET NO. |
|---------------------------|---------------------|--------|--------------|-----------|
| 554 | 16(RS-6) & 18(RS-6) | BROWN | 49 | 19 |
| CONTRACT NO. 72C37 | | | | |
| ILLINOIS FED. AID PROJECT | | | | |

