

F.A.P. RTE.	SECTION	COUNTY	TOTAL SHEETS	SHEET NO.
321	106RS-5, 18RS-11	PIKE	41	1
ILLINOIS			CONTRACT NO. 72C43	

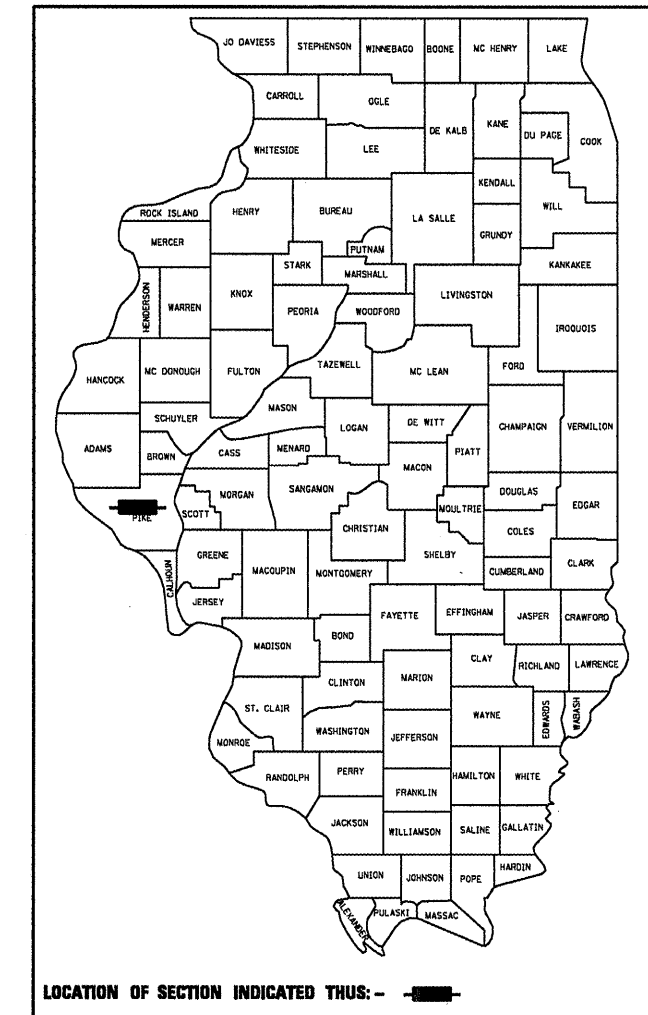
STATE OF ILLINOIS
DEPARTMENT OF TRANSPORTATION
DIVISION OF HIGHWAYS

PROPOSED
HIGHWAY PLANS

FAP ROUTE 321 (US 54)
SECTION 106RS-5, 18RS-11

(3P) RESURFACING
PIKE COUNTY
C-96-020-09

D-96-020-09



FOR INDEX OF SHEETS

- 1 COVER SHEET
- 2 GENERAL NOTES
- 3 SUMMARY OF QUANTITIES
- 4-12 TYPICAL SECTIONS
- 13-17 SCHEDULE OF QUANTITIES
- 18-30 PLAN SHEETS
- 31-33 ENTRANCE AND SIDEROAD DETAILS
- 34 BUTT JOINT AND RAMP DETAILS
- 35 PRISMATIC REFLECTOR DETAILS (PLACED ON CURB)
- 36-37 SUPER ELEVATION TRANSITION DETAILS
- 38 TRAFFIC SIGNAL DETECTOR LOOP PLAN
- 39-40 TRAFFIC SIGNAL DETECTOR LOOP DETAILS
- 41 LEGEND OF TRAFFIC SIGNAL DETAILS

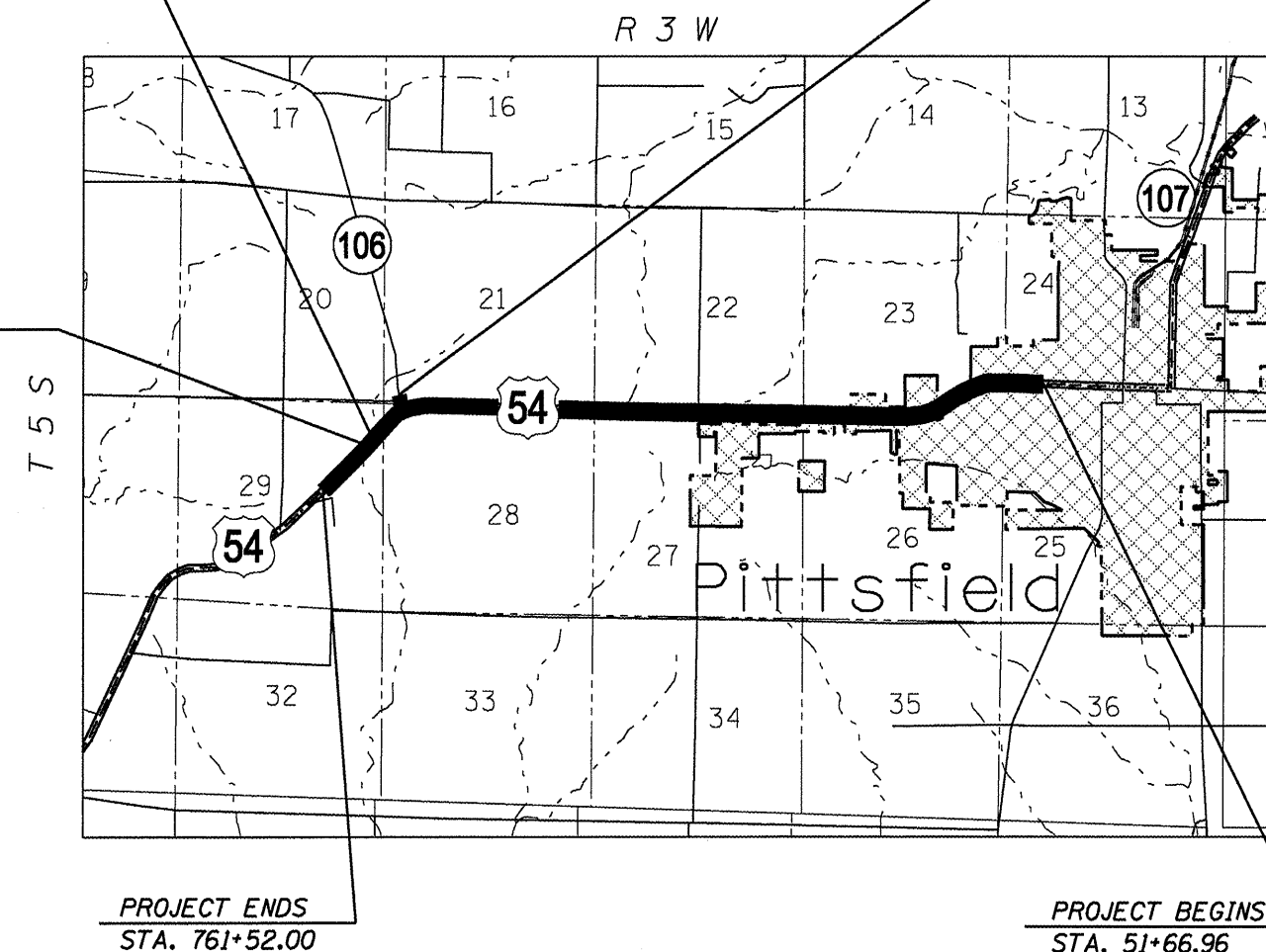
HIGHWAY STANDARDS

- 000001-05 701201-03
- 442201-03 701301-03
- 630001-08 701306-02
- 630301-05 701311-03
- 635006-03 701326-03
- 635011-02 701502-03
- 701001-02 701901-01
- 701006-03 780001-02
- 701011-02 781001-03
- 701701-06

SN 075-2033 STA 805+33
 TRIPLE 10'X7' RC BOX CULVERT

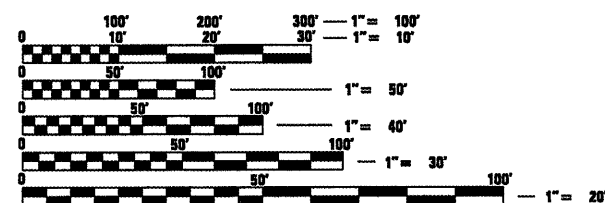
STATION EQUATION
 STA 809+70.99 BK =
 STA 219+00.00 AH

IMPROVEMENT ENDS
 STA. 216+30.00



PROJECT ENDS
 STA. 761+52.00

PROJECT BEGINS
 STA. 51+66.96



FULL SIZE PLANS HAVE BEEN PREPARED USING STANDARD ENGINEERING SCALES. REDUCED SIZED PLANS WILL NOT CONFORM TO STANDARD SCALES. IN MAKING MEASUREMENTS ON REDUCED PLANS, THE ABOVE SCALES MAY BE USED.

J.U.L.I.E.
 JOINT UTILITY LOCATION INFORMATION FOR EXCAVATION
 1-800-892-0123
 OR 811

PROJECT ENGINEER: SAL MADONIA (217) 782-4761
 STUDIES AND PLANS TEAM MANAGER: TOM COX (217) 524-7940
 CONTRACT NO. 72C43

GROSS LENGTH = 21,552.03 FT. = 4.08 MILE
 NET LENGTH = 21,552.03 FT. = 4.08 MILE

ADT = 4,268 (2007)

STATE OF ILLINOIS
 DEPARTMENT OF TRANSPORTATION
 DIVISION OF HIGHWAYS

SUBMITTED March 11 2010
Regis J. Dink
 DEPUTY DIRECTOR OF HIGHWAYS, REGION ENGINEER

May 7 2010
Scott E. Still P.E.
 acting ENGINEER OF DESIGN AND ENVIRONMENT

May 7 2010
Christine M. Reed
 DIRECTOR OF HIGHWAYS, CHIEF ENGINEER

PRINTED BY THE AUTHORITY
OF THE STATE OF ILLINOIS