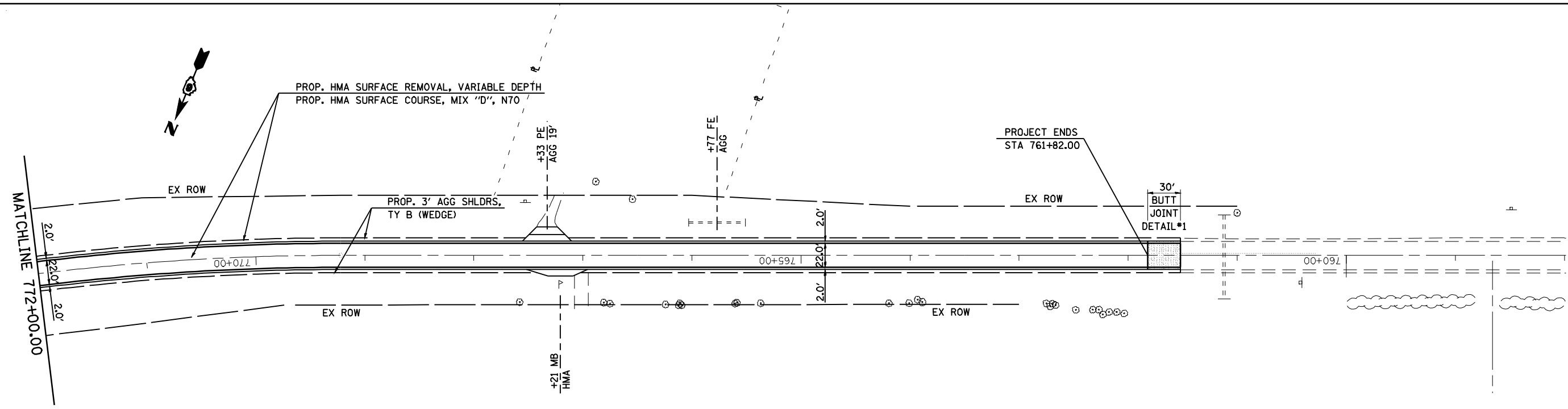
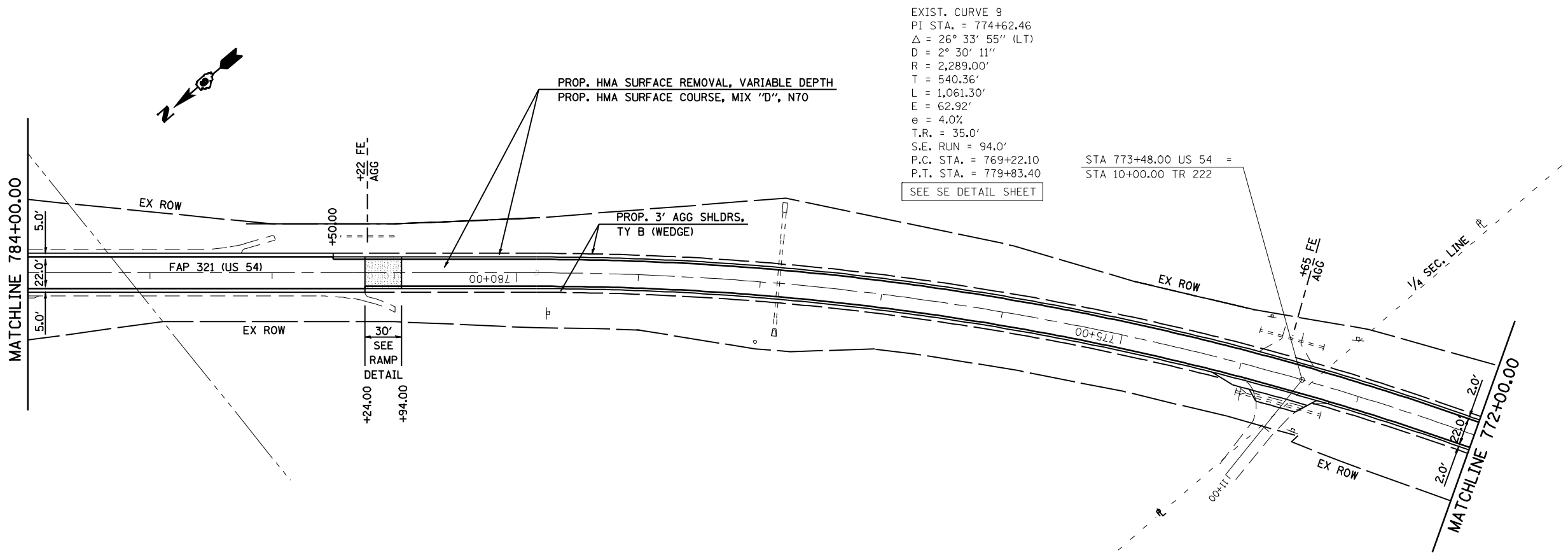


EXIST. CURVE 9  
 PI STA. = 774+62.46  
 $\Delta = 26^\circ 33' 55''$  (LT)  
 D = 2° 30' 11"  
 R = 2,289.00'  
 T = 540.36'  
 L = 1,061.30'  
 E = 62.92'  
 e = 4.0%  
 T.R. = 35.0'  
 S.E. RUN = 94.0'  
 P.C. STA. = 769+22.10  
 P.T. STA. = 779+83.40  
 SEE SE DETAIL SHEET



THE HMA SHOULDERS SHALL BE PAVED MONOLITHICALLY WITH THE HMA SURFACE COURSE WHERE SPECIFIED AS SURFACE MIX.

SEE ENTRANCE DETAIL AND SCHEDULES FOR ADDITIONAL INFORMATION

FILE NAME =	USER NAME = coxte	DESIGNED -	REVISED -
es:\pwork\pwidot\COXTE\dms62291\0672043-shr-dblp1n-1.dgn		DRAWN -	REVISED -
PLOT SCALE = 100.0000' / IN.		CHECKED -	REVISED -
PLOT DATE = Mar-11-2010 09:51:42AM		DATE -	REVISED -

**STATE OF ILLINOIS  
 DEPARTMENT OF TRANSPORTATION**

**FAP 321 (US 54) PLAN SHEETS**  
**50 SCALE**  
 SCALE: 1" = 50' SHEET NO. OF SHEETS STA. 784+00.00 TO STA.

F.A.P. RTE.	SECTION	COUNTY	TOTAL SHEETS	SHEET NO.
321	106RS-5, 18RS-11	PIKE	41	30
CONTRACT NO. 72C43				
ILLINOIS FED. AID PROJECT				