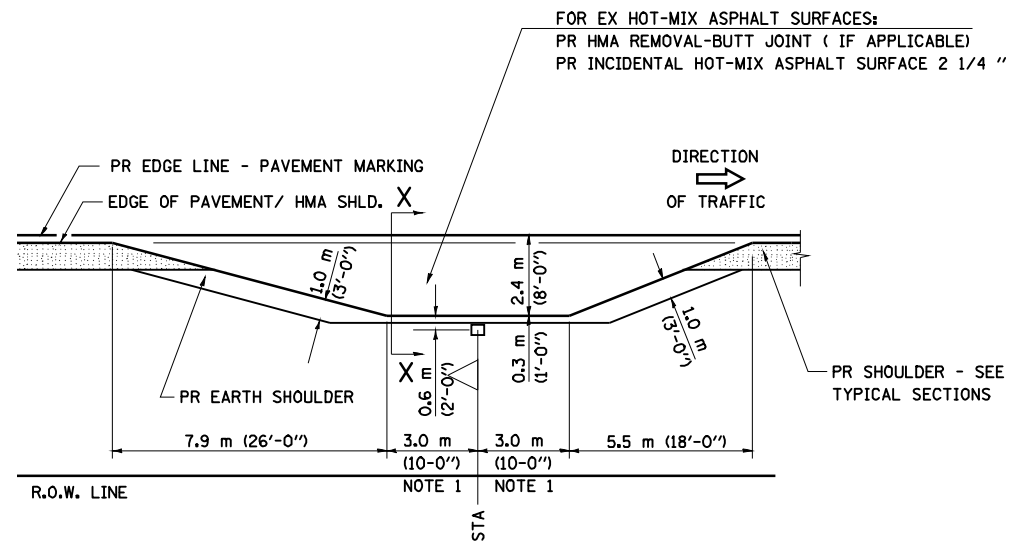
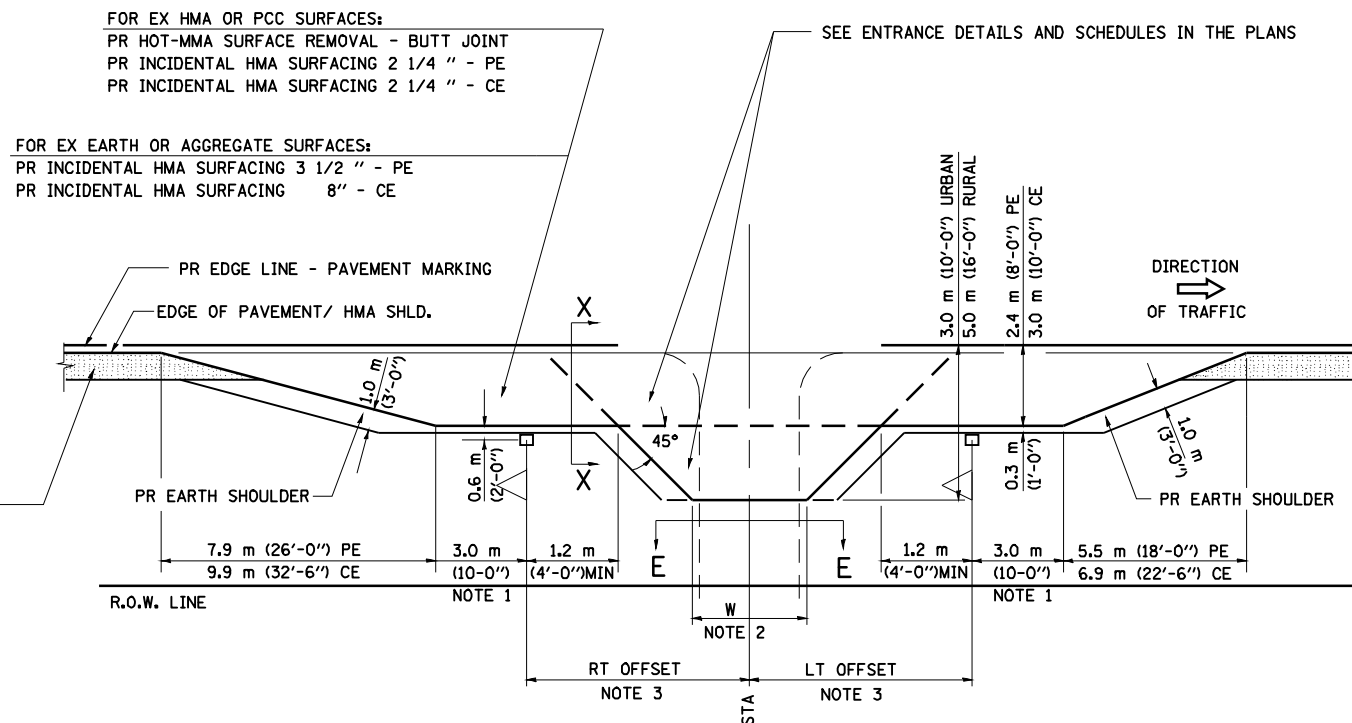


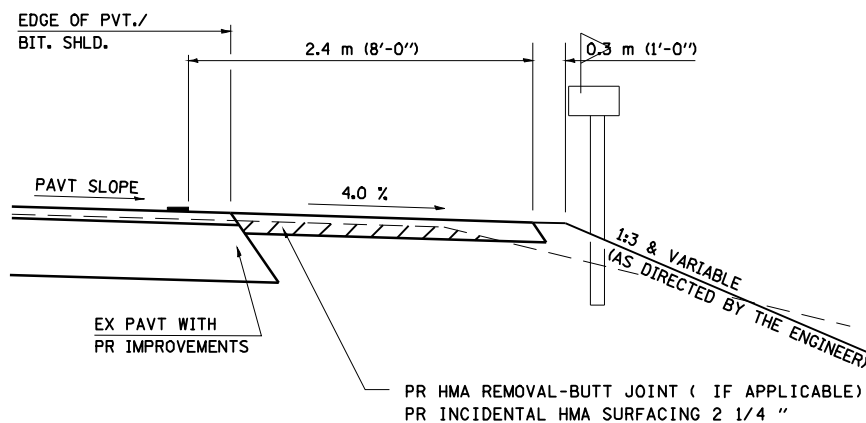
DETAILS OF MAILBOX TURNOUTS



PLAN - MAILBOX TURNOUTS

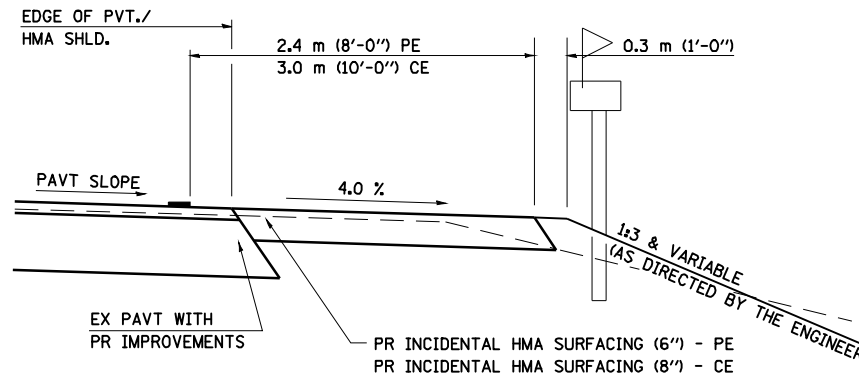


PLAN - COMBINED MAILBOX TURNOUT WITH TRAILING OR LEADING ENTRANCE



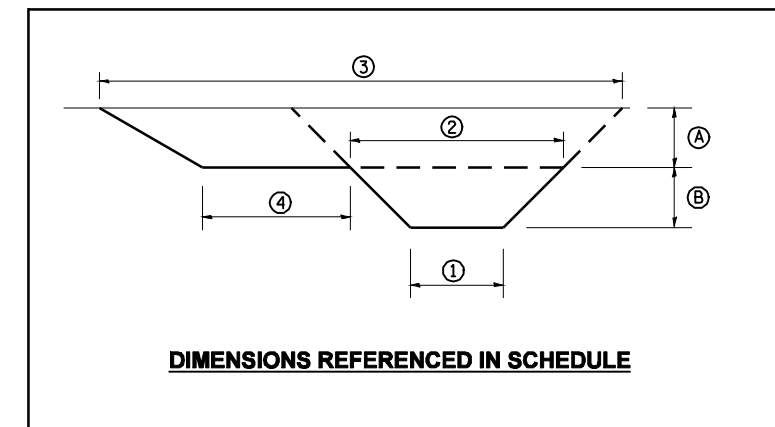
**SECTION X-X THRU MAILBOX TURNOUT
ALSO APPLIES TO MAILBOX TURNOUTS COMBINED WITH
EX EARTH, AGGREGATE, OR BITUMINOUS PE & FE**

(DETAIL APPLIES WHEN M.B. TURNOUT DOES NOT EXIST.
IF EXISTING, TREAT SAME AS ENTRANCE.)



**SECTION X-X THRU MAILBOX TURNOUT
COMBINED WITH EX BITUMINOUS CONC & PC CONC PE & CE**

(DETAIL APPLIES WHEN M.B. TURNOUT DOES NOT EXIST.
IF EXISTING, TREAT SAME AS ENTRANCE.)



DIMENSIONS REFERENCED IN SCHEDULE

- NOTE 1 IF MORE THAN ONE MAILBOX IS PRESENT, DIMENSION FROM CENTER OF END MAILBOX.
- NOTE 2 FOR ENTRANCE LAYOUT DIMENSIONS AND SECTIONS A-A & E-E REFER TO THE SCHEDULES IN THE PLANS.
- NOTE 3 BOTH LT OR RT OFFSETS FOR MAILBOX SHOWN USE OFFSET DIMENSION PER SCHEDULE AND REFER TO LAYOUT SHOWN ON THE PLAN.

ALL DIMENSIONS ARE IN MILLIMETERS (INCHES)
UNLESS OTHERWISE SHOWN.

| | | | | | | | | | | | |
|-------------|---|--------------------------|-----------------------|---|--|---------------------------|------------------|--------|--------------|-----------|--|
| FILE NAME = | USER NAME = coxte | DESIGNED - | REVISED - 2/19/03 JCN | STATE OF ILLINOIS DEPARTMENT OF TRANSPORTATION | DIST. 6 DETAILS FOR RURAL/URBAN ENT., MAILBOX TURNOUT & SIDEROADS W/O CONC. GUTTER (3P-PROJ.) | F.A.P. RTE. | SECTION | COUNTY | TOTAL SHEETS | SHEET NO. | |
| ENT PPP.DGN | er:\pwwork\pwwid01\COXTE\dms62291\0672043-shd-deta1.s.dgn | DRAWN - CADD | REVISED - 4/01/04 JCN | | | 321 | 106RS-5, 18RS-11 | PIKE | 41 | 32 | |
| | PLOT SCALE = 40.0000 ' / IN. | CHECKED - JCN | REVISED - | | | CONTRACT NO. 72C43 | | | | | |
| | PLOT DATE = Mar-11-2010 09:51:47AM | DATE - FEBRUARY 23, 1999 | REVISED - | | | ILLINOIS FED. AID PROJECT | | | | | |