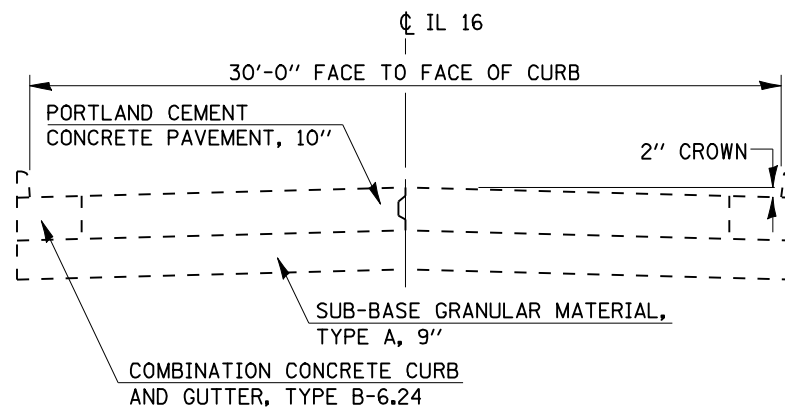
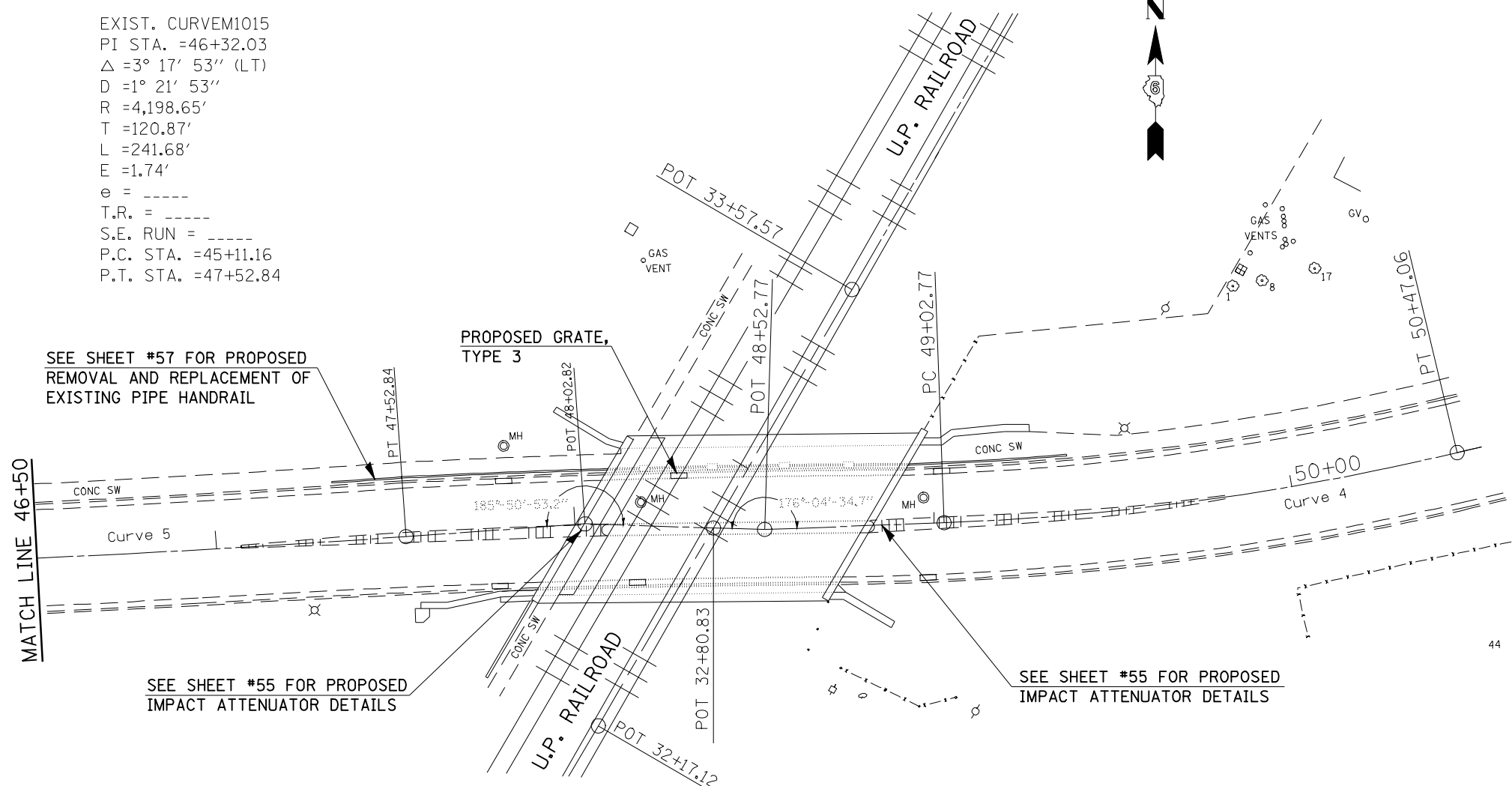
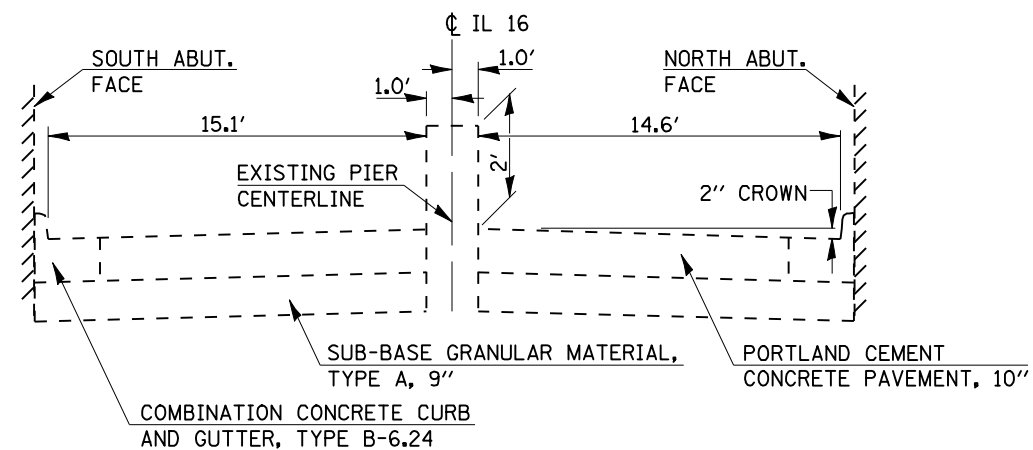


EXIST. CURVEM1015
 PI STA. =46+32.03
 $\Delta = 3^\circ 17' 53''$ (LT)
 $D = 1^\circ 21' 53''$
 $R = 4,198.65'$
 $T = 120.87'$
 $L = 241.68'$
 $E = 1.74'$
 $e = \text{-----}$
 $T.R. = \text{-----}$
 $S.E. RUN = \text{-----}$
 $P.C. STA. = 45+11.16$
 $P.T. STA. = 47+52.84$

EXIST. CURVE M1014
 PI STA. =49+75.15
 $\Delta = 11^\circ 19' 50''$ (LT)
 $D = 7^\circ 51' 10''$
 $R = 729.62'$
 $T = 72.38'$
 $L = 144.29'$
 $E = 3.58'$
 $e = \text{-----}$
 $T.R. = \text{-----}$
 $S.E. RUN = \text{-----}$
 $P.C. STA. = 49+02.77$
 $P.T. STA. = 50+47.06$



STA. 44+57.00 TO STA. 48+92.25
STA. 49+67.25 TO STA. 53+76.09



STA. 48+92.25 TO STA. 49+67.25

**EXISTING TYPICAL CROSS SECTIONS ADJACENT TO VIADUCT
 (FOR PATCHING PURPOSES)**

•-20RS-7, 21RS-6, 104RS, 105RS-4
 •-325, 24

FILE NAME = e:\pwwork\pwidot\LAUGHLINRL\0105356\072C52-ah-t-plan.dgn	USER NAME = laughlinr1	DESIGNED - RTS	REVISED -	STATE OF ILLINOIS DEPARTMENT OF TRANSPORTATION	PLAN SHEET		F.A.P. RTE.	SECTION	COUNTY	TOTAL SHEETS	SHEET NO.
	PLOT SCALE = 40.0000' / IN.	DRAWN - RTS	REVISED -		SCALE:	SHEET NO. 9 OF 15 SHEETS	STA. TO STA.	**	.	MONTGOMERY	60
PLOT DATE = Mar-26-2010 11:59:47AM	CHECKED - RTS	DATE - 3-10-10	REVISED -							CONTRACT NO. 72C52	
								FED. ROAD DIST. NO. ILLINOIS FED. AID PROJECT			