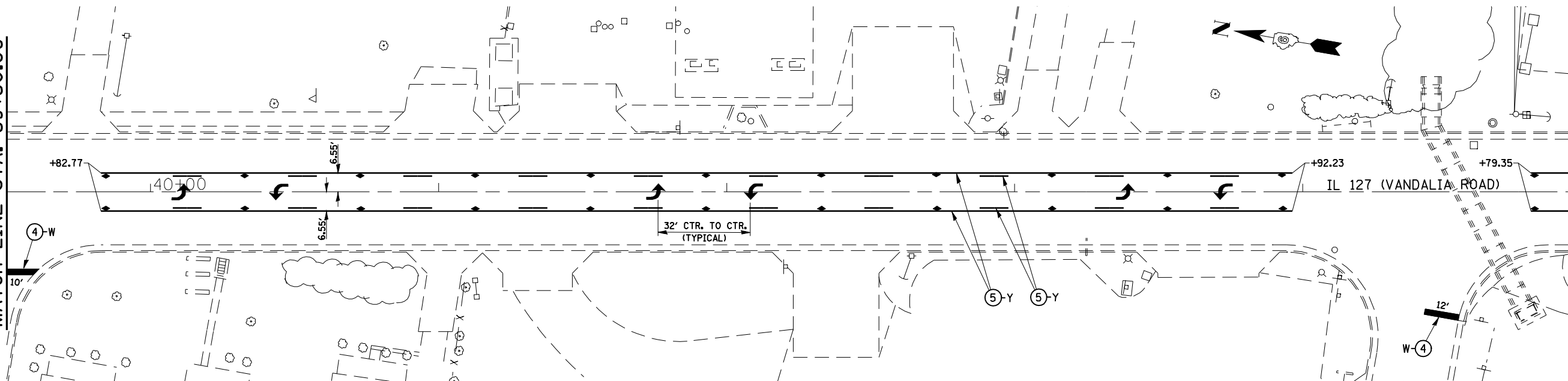
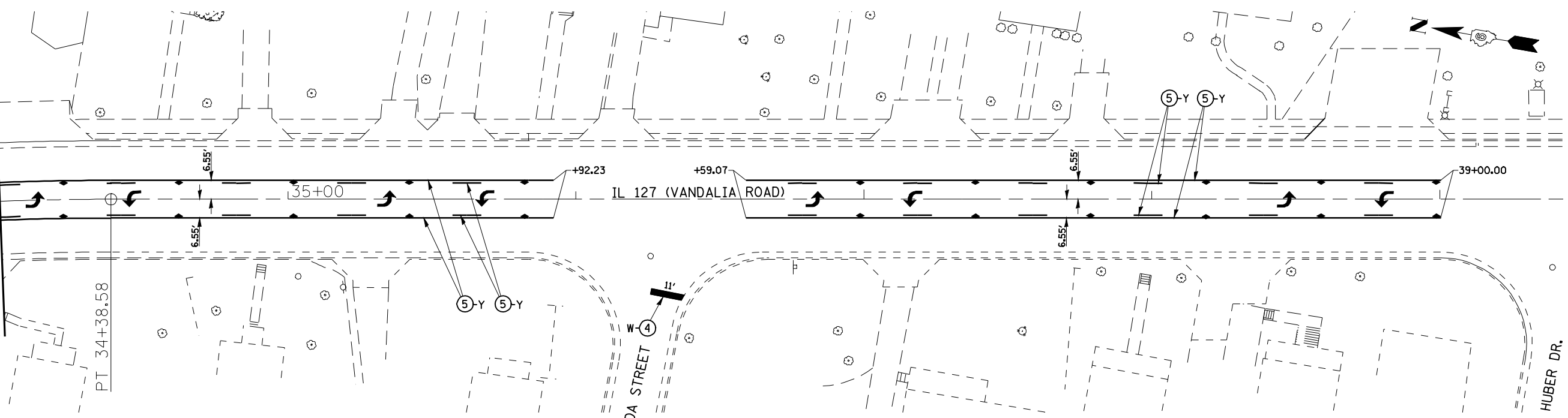


MATCH LINE STA. 34+00.00

MATCH LINE STA. 39+50.00

MATCH LINE STA. 39+50.00

MATCH LINE STA. 45+00.00



PAVEMENT MARKING LEGEND	
①	PREFORMED PLASTIC PAVEMENT MARKING, TYPE B, INLAID - LINE 5"
②	PREFORMED PLASTIC PAVEMENT MARKING, TYPE B, INLAID - LINE 6"
③	PREFORMED PLASTIC PAVEMENT MARKING, TYPE B, INLAID - LINE 6" (6' SKIP- 2' DASH)
④	PREFORMED PLASTIC PAVEMENT MARKING, TYPE B, INLAID - LINE 24"
⑤	THERMOPLASTIC PAVEMENT MARKING - LINE 5"
⑥	THERMOPLASTIC PAVEMENT MARKING - LINE 5" (DOUBLE YELLOW LINES @ 13" CENTERS)
⑦	THERMOPLASTIC PAVEMENT MARKING - LINE 6"
⑧	THERMOPLASTIC PAVEMENT MARKING - LINE 8"
⑨	THERMOPLASTIC PAVEMENT MARKING - LINE 12"
⑩	PAINT PAVEMENT MARKING - LINE 5"
↩	PREFORMED PLASTIC PAVEMENT MARKING, TYPE B, INLAID - LETTERS AND SYMBOLS (WHITE)
▶	RAISED REFLECTIVE PAVEMENT MARKER (ONE-WAY CRYSTAL)
▶	RAISED REFLECTIVE PAVEMENT MARKER (ONE -WAY AMBER)
◆	RAISED REFLECTIVE PAVEMENT MARKER (TWO -WAY AMBER)
⊗-W	PAVEMENT MARKING, WHITE
⊗-Y	PAVEMENT MARKING, YELLOW

•-20RS-7, 21RS-6, 104RS, 105RS-4
•-325, 42

FILE NAME =	USER NAME = laughlinr1	DESIGNED - RTS	REVISED -	STATE OF ILLINOIS DEPARTMENT OF TRANSPORTATION	PAVEMENT MARKING SHEET		F.A.P. RTE.	SECTION	COUNTY	TOTAL SHEETS	SHEET NO.
e:\pwork\pwork\LAUGHLINRL\10105356\0672C52-ah-t-pmk.dgn		DRAWN - RTS	REVISED -		SCALE:	SHEET NO. 13 OF 15 SHEETS	STA.		MONTGOMERY	60	49
PLOT SCALE = 48.0000' / IN.		CHECKED - RTS	REVISED -				TO STA.		CONTRACT NO. 72C52		
PLOT DATE = Mar-26-2010 12:00:26PM		DATE - 3-10-10	REVISED -						ILLINOIS FED. AID PROJECT		