

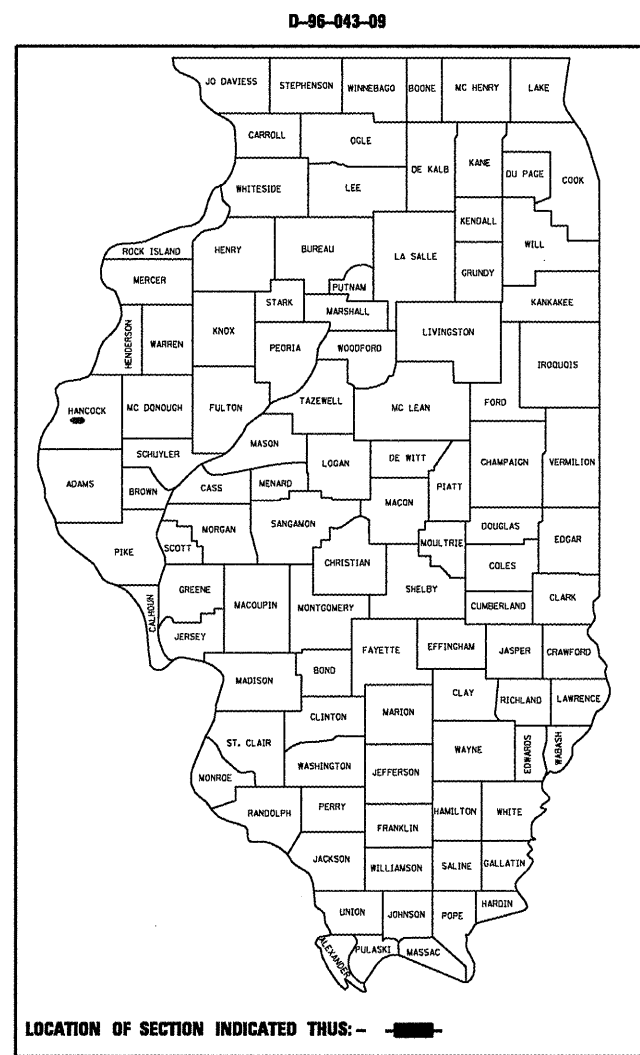
F.A.P. RTE.	SECTION	COUNTY	TOTAL SHEETS	SHEET NO.
315	(28, 29) (RS-5)	HANCOCK	40	1
		ILLINOIS	CONTRACT NO. 72C63	

STATE OF ILLINOIS
DEPARTMENT OF TRANSPORTATION
DIVISION OF HIGHWAYS
**PROPOSED
HIGHWAY PLANS**

FAP ROUTE 315 (US 136)
SECTION (28, 29) (RS-5)

3P RESURFACING
HANCOCK COUNTY

C-96-043-09

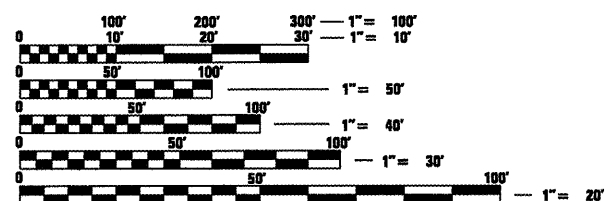
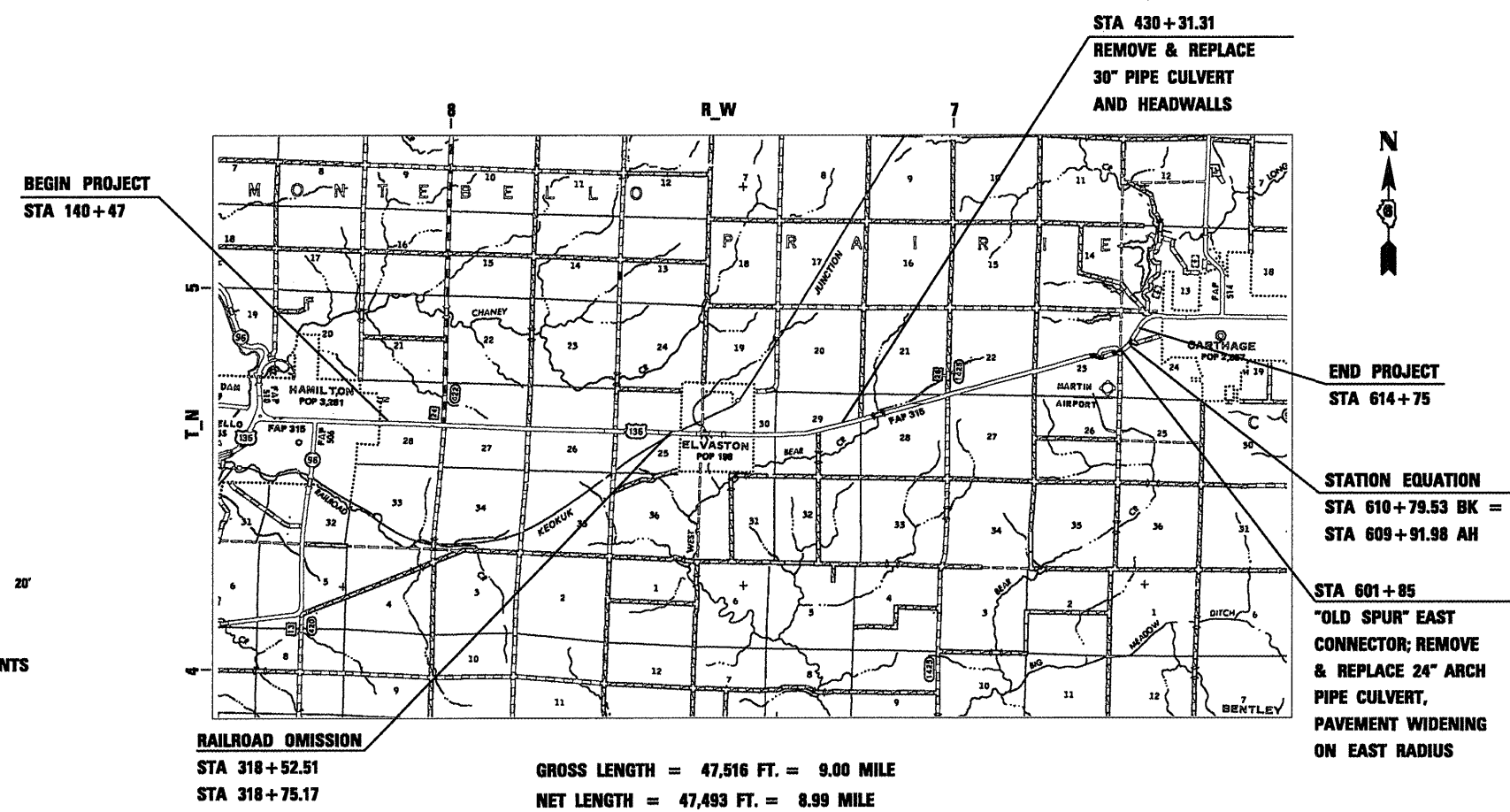


INDEX OF SHEETS

- 1 COVER SHEET
- 2 GENERAL NOTES
- 3-4 SUMMARY OF QUANTITIES
- 5-6 SCHEDULE OF QUANTITIES
- 7-8 SIDE- RD. SCHEDULE
- 9-13 TYPICAL SECTIONS
- 14 CROSS TIES & BENCHMARKS
- 15-32 LINE DIAGRAM
- 32A OLD SPUR WIDENING
- 33-34 CONNABLE RD. - INT. IMPROVEMENT & PVMT MARKING
- 35 BUTT JOINT DETAILS
- 36-37 SIDE ROAD DETAILS
- 38 RUMBLE STRIP DETAIL
- 39 OLD SPUR RD. CROSS SECTIONS
- 40 US 136 CROSS SECTION

LIST OF STANDARDS

- | | | |
|-----------|-----------|-----------|
| 000001-05 | 701011-02 | 701901-01 |
| 442101-7 | 701201-03 | 780001-02 |
| 442201-03 | 701301-03 | 781001-03 |
| | 701306-02 | |
| 482001-02 | 701311-03 | |
| 542201-02 | | |
| 701001-02 | 701326-03 | |
| 701006-03 | 701501-05 | |



FULL SIZE PLANS HAVE BEEN PREPARED USING STANDARD ENGINEERING SCALES. REDUCED SIZED PLANS WILL NOT CONFORM TO STANDARD SCALES. IN MAKING MEASUREMENTS ON REDUCED PLANS, THE ABOVE SCALES MAY BE USED.

J.U.L.I.E.
JOINT UTILITY LOCATION INFORMATION FOR EXCAVATION
1-800-892-0123
OR 811

GROSS LENGTH = 47,516 FT. = 9.00 MILE
NET LENGTH = 47,493 FT. = 8.99 MILE

ADT = 4037
PV = 3325 (82.3%)
SU = 371 (9.2%)
MU = 341 (8.5%)

PROJECT ENGINEER JOHN NEGANGARD 217-782-6990
PROJECT MANAGER MARK DUST 217-785-0597

CONTRACT NO. 72C63

STATE OF ILLINOIS
DEPARTMENT OF TRANSPORTATION
DIVISION OF HIGHWAYS

SUBMITTED April 6 20 10
Roger Z. Dinkler
DEPUTY DIRECTOR OF HIGHWAYS, REGION ENGINEER

May 7 20 10
Scott E. Stitt, P.E. & C
Acting ENGINEER OF DESIGN AND ENVIRONMENT

May 7 20 10
Christine M. Reedler
DIRECTOR OF HIGHWAYS, CHIEF ENGINEER

**PRINTED BY THE AUTHORITY
OF THE STATE OF ILLINOIS**