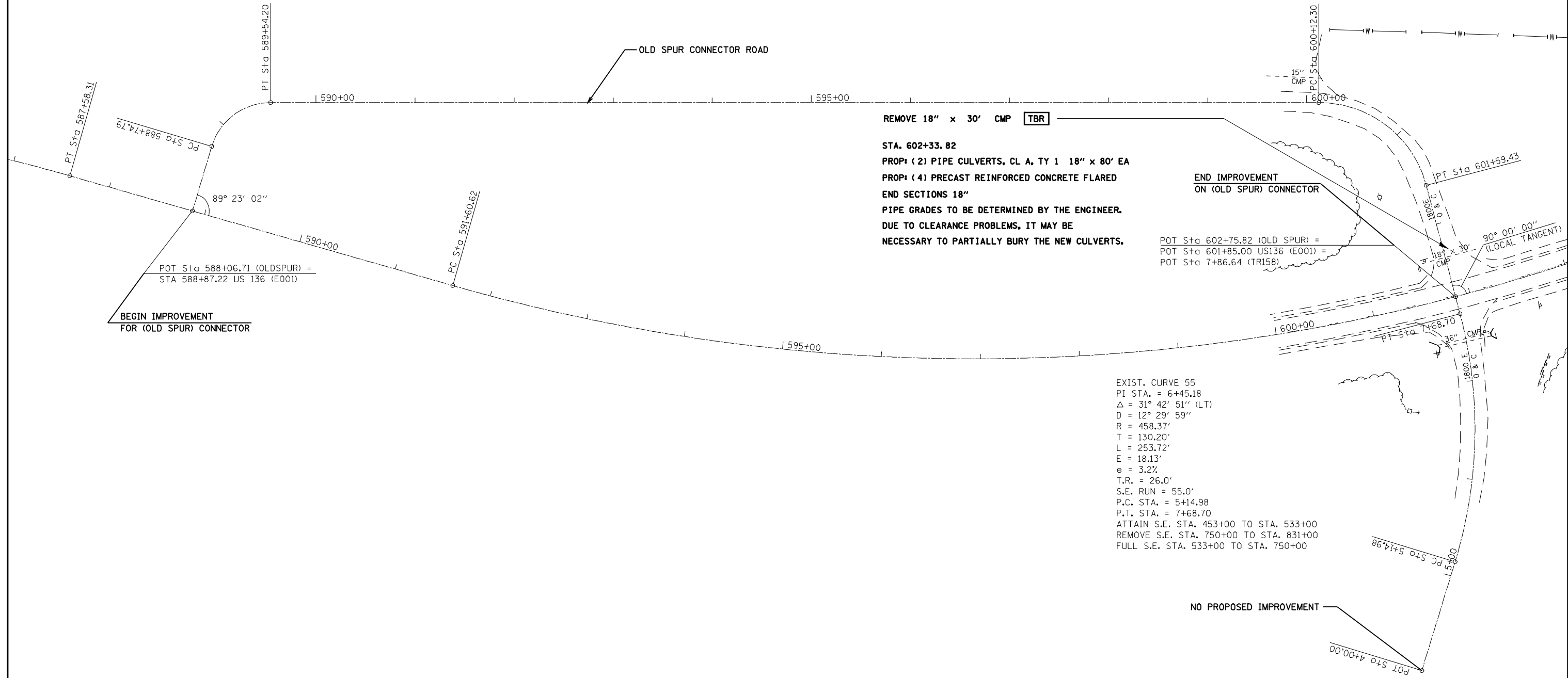


EXIST. CURVE 62
 PI STA. = 589+20.99
 $\Delta = 73^\circ 23' 00''$ (RT)
 D = 92' 24" 40"
 R = 62.00'
 T = 46.20'
 L = 79.41'
 E = 15.32'
 e = 4.0%
 T.R. = 24.30'
 S.E. RUN = 65.0'
 P.C. STA. = 588+74.79
 P.T. STA. = 589+54.20
 ATTAIN S.E. STA. 587+69 TO STA. 589+19
 REMOVE S.E. STA. 589+14 TO STA. 590+60
 FULL S.E. STA. 589+15 TO STA. 589+14

EXIST. CURVE 61
 PI STA. = 600+98.66
 $\Delta = 75^\circ 16' 09''$ (RT)
 D = 51' 09" 24"
 R = 112.00'
 T = 86.36'
 L = 147.13'
 E = 29.43'
 e = 4.0%
 T.R. = 24.0'
 S.E. RUN = 65.0'
 P.C. STA. = 600+12.30
 P.T. STA. = 601+59.43
 ATTAIN S.E. STA. 599+45 TO STA. 600+34
 REMOVE S.E. STA. 601+38 TO STA. 602+27
 FULL S.E. STA. 600+34 TO STA. 601+38



REMOVE 18" x 30' CMP [TBR]

STA. 602+33.82
 PROP: (2) PIPE CULVERTS, CL A, TY 1 18" x 80' EA
 PROP: (4) PRECAST REINFORCED CONCRETE FLARED
 END SECTIONS 18"
 PIPE GRADES TO BE DETERMINED BY THE ENGINEER.
 DUE TO CLEARANCE PROBLEMS, IT MAY BE
 NECESSARY TO PARTIALLY BURY THE NEW CULVERTS.

END IMPROVEMENT
 ON (OLD SPUR) CONNECTOR

POT Sta 602+75.82 (OLD SPUR) =
 POT Sta 601+85.00 US136 (E001) =
 POT Sta 7+86.64 (TR158)

BEGIN IMPROVEMENT
 FOR (OLD SPUR) CONNECTOR

EXIST. CURVE 55
 PI STA. = 6+45.18
 $\Delta = 31^\circ 42' 51''$ (LT)
 D = 12' 29" 59"
 R = 458.37'
 T = 130.20'
 L = 253.72'
 E = 18.13'
 e = 3.2%
 T.R. = 26.0'
 S.E. RUN = 55.0'
 P.C. STA. = 5+14.98
 P.T. STA. = 7+68.70
 ATTAIN S.E. STA. 453+00 TO STA. 533+00
 REMOVE S.E. STA. 750+00 TO STA. 831+00
 FULL S.E. STA. 533+00 TO STA. 750+00

NO PROPOSED IMPROVEMENT

FILE NAME =	USER NAME = laughlinr1	DESIGNED -	REVISED -
ea:\pwork\pwid001\LAUGHLINRL\0159674\0672C63-aht-alignments50.dgn		DRAWN -	REVISED -
	PLOT SCALE = 100.0000' / IN.	CHECKED -	REVISED -
	PLOT DATE = Apr-07-2010 08:39:19AM	DATE -	REVISED -

STATE OF ILLINOIS
 DEPARTMENT OF TRANSPORTATION

SCALE: SHEET NO. OF SHEETS STA. TO STA.

F.A.P. RTE.	SECTION	COUNTY	TOTAL SHEETS	SHEET NO.
315	(28,29)RS-5	HANCOCK	40	30
ILLINOIS FED. AID PROJECT			CONTRACT NO. 72C63	