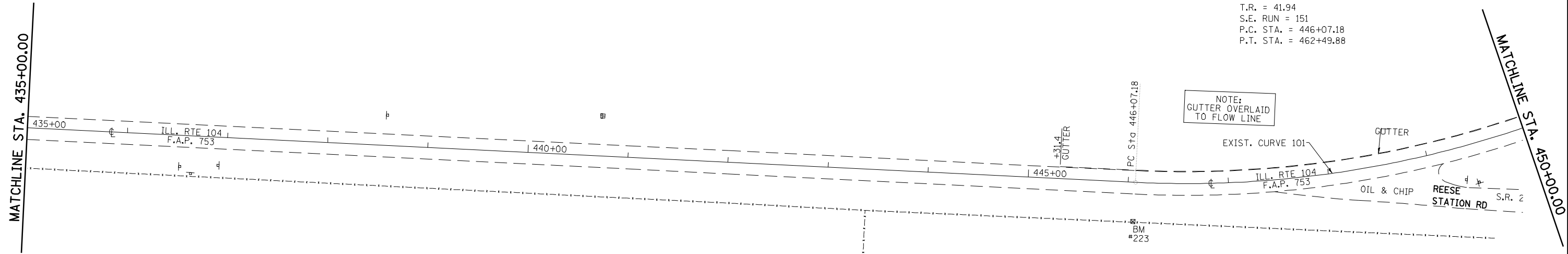
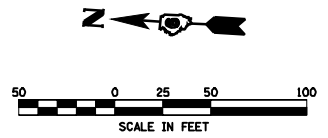
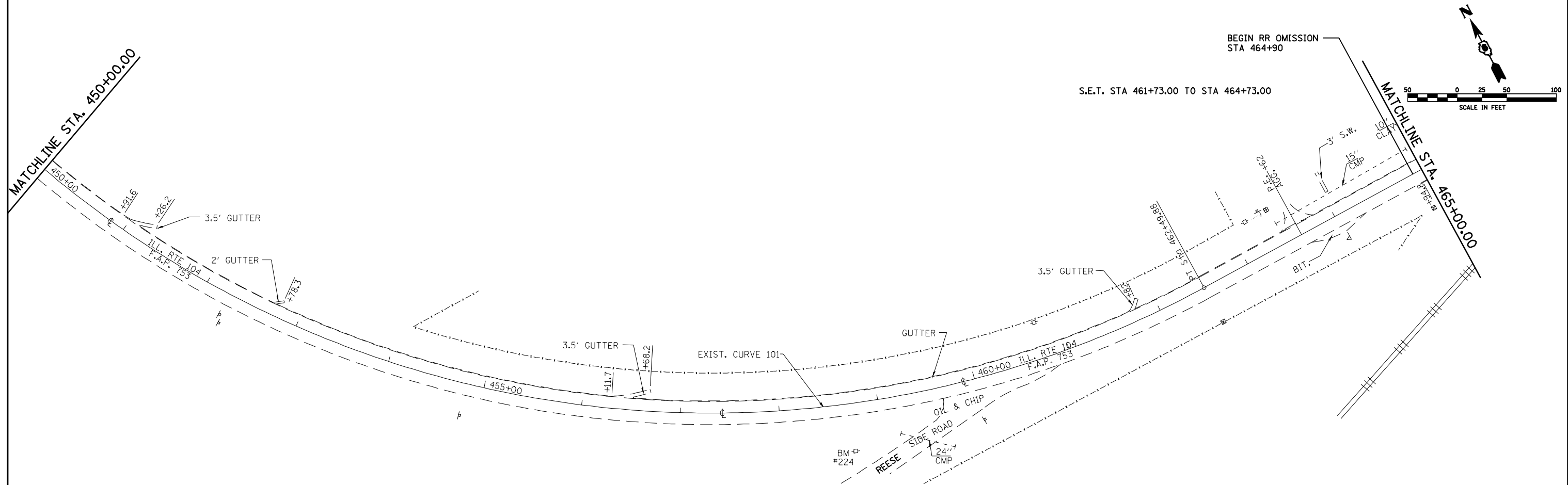


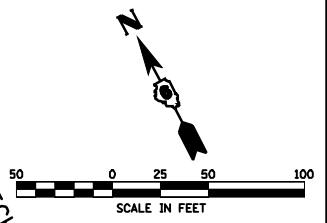
EXIST. CURVE 101
 PI STA. = 456+55.39
 $\Delta = 90^\circ 21' 55''$ (LT)
 $D = 5^\circ 30' 04''$
 $R = 1,041.55'$
 $T = 1,048.21'$
 $L = 1,642.70'$
 $E = 436.14'$
 $e = 5.4$
 $T.R. = 41.94$
 $S.E. RUN = 151$
 $P.C. STA. = 446+07.18$
 $P.T. STA. = 462+49.88$



BM #223 - TOP OF R.O.W. MARKER
 STA 446+06.6, 39.2' LT, ELEV 699.21
 S.E.T. STA 444+00.00 TO STA 446+30.00



S.E.T. STA 461+73.00 TO STA 464+73.00



FILE NAME =	USER NAME = laughlinr1	DESIGNED -	REVISED -
er:\pwork\PWIDOT\LAUGHLINRL\0120394\0672C66-SHT-plan1.dgn		DRAWN -	REVISED -
PLOT SCALE = 100.0000' / IN.		CHECKED -	REVISED -
PLOT DATE = Mar-29-2010 10:07:42AM		DATE -	REVISED -

**STATE OF ILLINOIS
 DEPARTMENT OF TRANSPORTATION**

PLAN SHEET - IL 104

SCALE: SHEET NO. 16 OF 26 SHEETS STA. TO STA.

F.A.P. RTE.	SECTION	COUNTY	TOTAL SHEETS	SHEET NO.
753	(128)RS-3	MORGAN	26	16
CONTRACT NO. 72C66				
ILLINOIS FED. AID PROJECT				