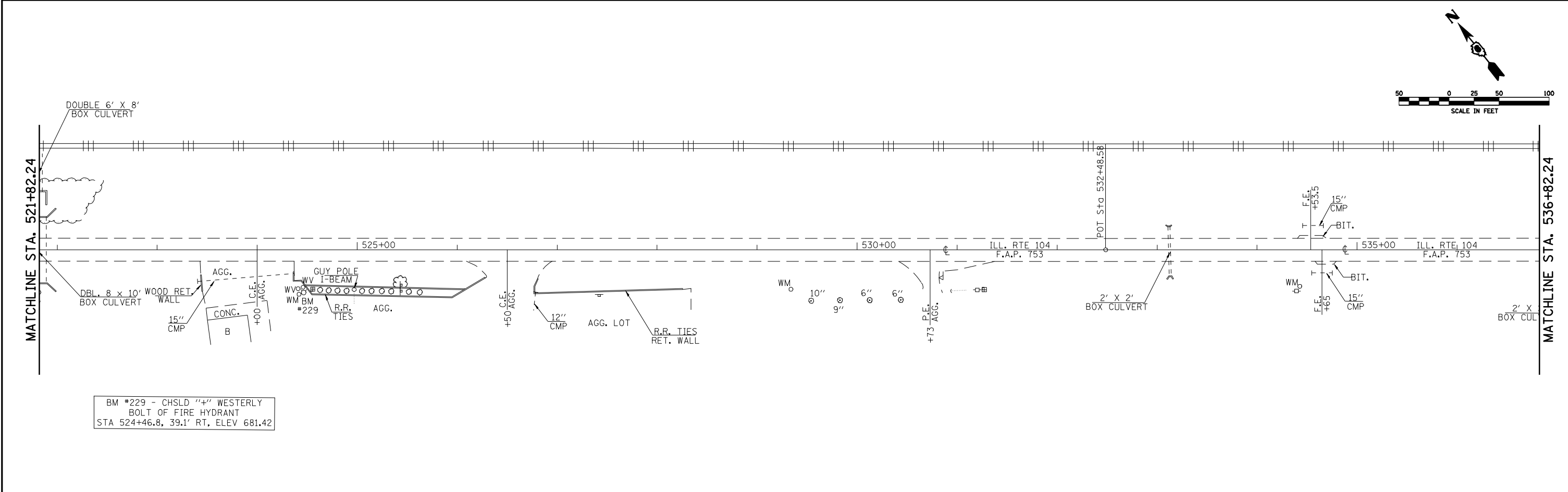


REMOVED
 BM #228 - 60D SPIKE NAIL IN P.P.
 STA 513+89.8, 67.3' RT, ELEV 678.79



BM #229 - CHSLD "+\" WESTERLY
 BOLT OF FIRE HYDRANT
 STA 524+46.8, 39.1' RT, ELEV 681.42

FILE NAME =	USER NAME = laughlinr1	DESIGNED -	REVISED -	STATE OF ILLINOIS DEPARTMENT OF TRANSPORTATION	PLAN SHEET - IL 104			F.A.P. RTE.	SECTION	COUNTY	TOTAL SHEETS	SHEET NO.
es:\pwwork\pwwid\LAUGHLINRL\0120394\0672C86-SHT-plan1.dgn	DRAWN -	REVISED -	753					(128)RS-3	MORGAN	26	19	
PLOT SCALE = 100.0000' / IN.	CHECKED -	REVISED -	CONTRACT NO. 72C66									
PLOT DATE = Mar-29-2010 10:07:53AM	DATE -	REVISED -	ILLINOIS FED. AID PROJECT									
				SCALE:	SHEET NO. 19 OF 26 SHEETS	STA.	TO STA.					