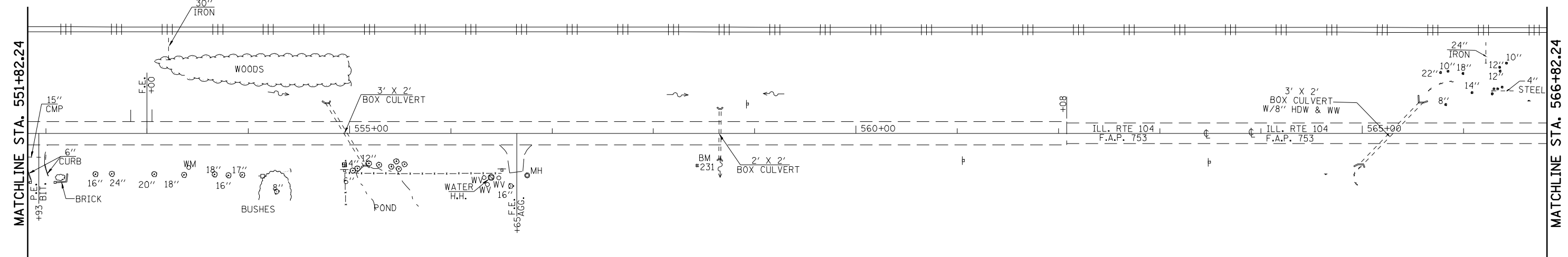
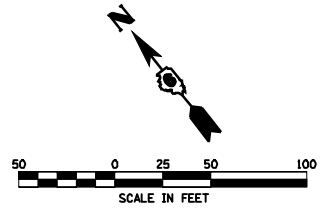


BM #230 - CHSLD "□" IN CTR. OF SOUTHERLY HDWL OF 2 X 1.5 BOX STA 543+77.3, 20.7' RT, ELEV 685.20



BM #231 - CHSLD "□" IN CTR OF SOUTHERLY HDWL OF 2 X 2 BOX STA 558+66.9, 25.4' RT, ELEV 680.97

S.E.T. STA 566+64.38 TO STA 568+94.38

| | | | |
|--|------------------------|------------|-----------|
| FILE NAME = | USER NAME = laughlinr1 | DESIGNED - | REVISED - |
| e:\pwwork\pwwid01\LAUGHLINRL\0120394\0672C66-SHT-plan1.dgn | | DRAWN - | REVISED - |
| PLOT SCALE = 100.0000' / IN. | | CHECKED - | REVISED - |
| PLOT DATE = Mar-29-2010 10:07:56AM | | DATE - | REVISED - |

**STATE OF ILLINOIS
DEPARTMENT OF TRANSPORTATION**

PLAN SHEET - IL 104

SCALE: SHEET NO. 20 OF 26 SHEETS STA. TO STA.

| F.A.P. RTE. | SECTION | COUNTY | TOTAL SHEETS | SHEET NO. |
|--------------------|-----------|--------|---------------------------|-----------|
| 753 | (128)RS-3 | MORGAN | 26 | 20 |
| CONTRACT NO. 72C66 | | | ILLINOIS FED. AID PROJECT | |