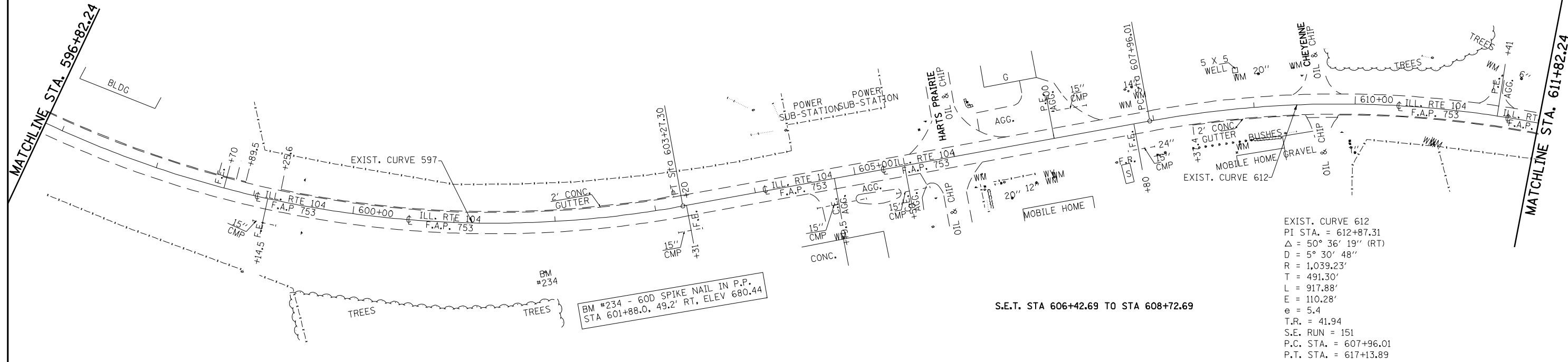
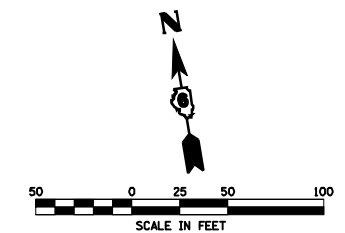


S.E.T. STA 602+50.63 TO STA 604+80.63

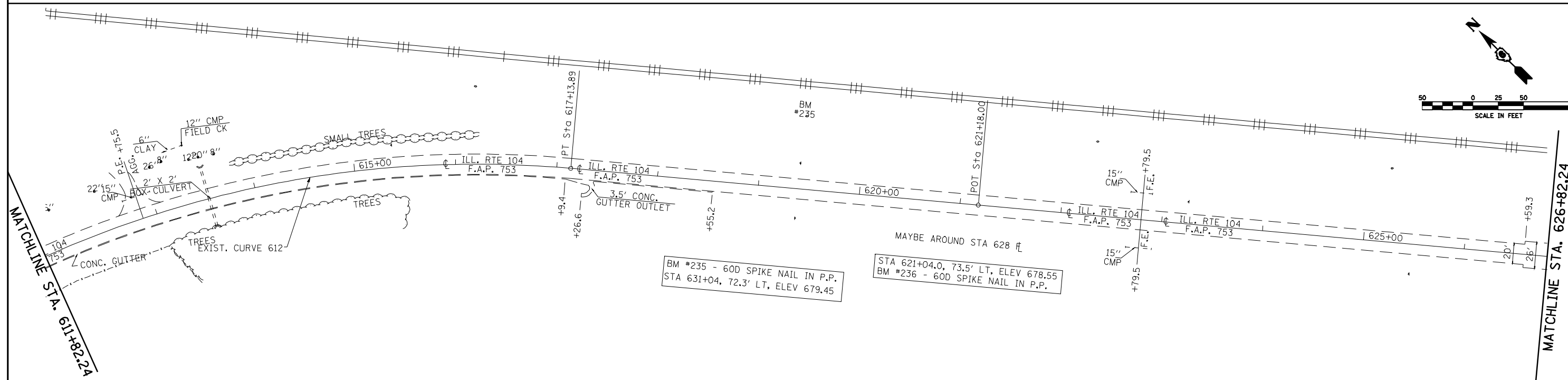
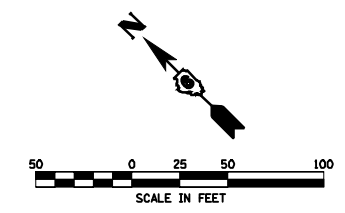


BM #234 - 60D SPIKE NAIL IN P.P.
STA 601+88.0, 49.2' RT, ELEV 680.44

S.E.T. STA 606+42.69 TO STA 608+72.69

EXIST. CURVE 612
PI STA. = 612+87.31
 $\Delta = 50^\circ 36' 19''$ (RT)
D = $5^\circ 30' 48''$
R = 1,039.23'
T = 491.30'
L = 917.88'
E = 110.28'
e = 5.4
T.R. = 41.94
S.E. RUN = 151
P.C. STA. = 607+96.01
P.T. STA. = 617+13.89

S.E.T. STA 616+37.23 TO STA 618+67.23



BM #235 - 60D SPIKE NAIL IN P.P.
STA 631+04, 72.3' LT, ELEV 679.45

MAYBE AROUND STA 628 ft
STA 621+04.0, 73.5' LT, ELEV 678.55
BM #236 - 60D SPIKE NAIL IN P.P.

FILE NAME =	USER NAME = laughlinr1	DESIGNED -	REVISED -	STATE OF ILLINOIS DEPARTMENT OF TRANSPORTATION	PLAN SHEET - IL 104			F.A.P. -	SECTION	COUNTY	TOTAL SHEETS	SHEET NO.
er:\pwork\pwork\LAUGHLINRL\0120394\072C66-SHT-plan1.dgn	PLOT SCALE = 100.0000' / IN.	DRAWN -	REVISED -					753	(128)RS-3	MORGAN	26	22
PLOT DATE = Mar-29-2010 10:08:04AM	DATE -	CHECKED -	REVISED -		SCALE: SHEET NO. 22 OF 26 SHEETS STA. TO STA.			CONTRACT NO. 72C66				
ILLINOIS FED. AID PROJECT												