

STATE OF ILLINOIS
DEPARTMENT OF TRANSPORTATION
DIVISION OF HIGHWAYS

**PROPOSED
HIGHWAY PLANS**

FAP ROUTE 753 (IL 104)
SECTION (128X)RS-3

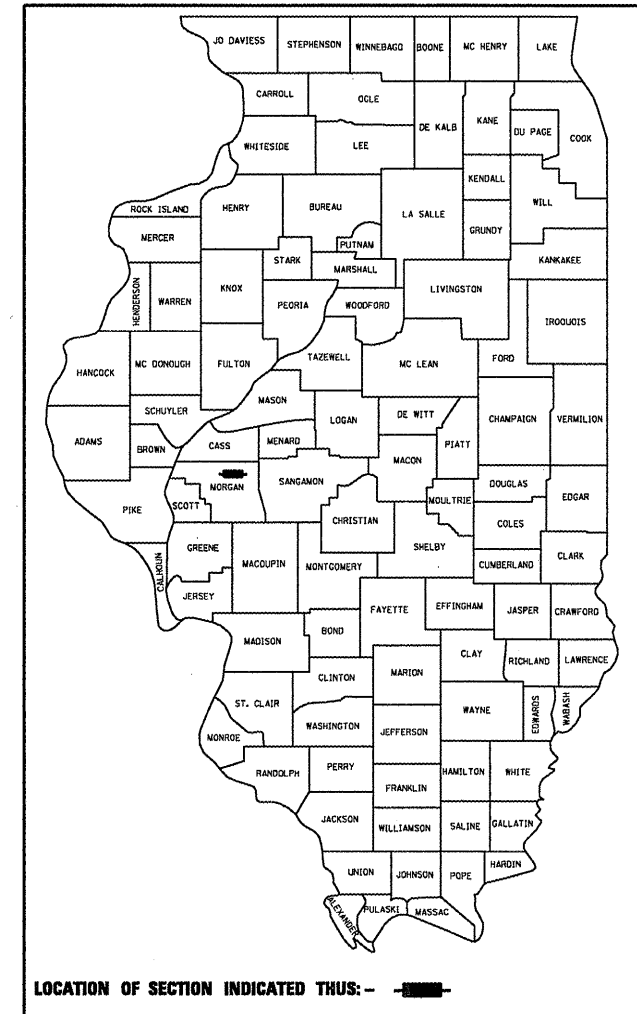
RESURFACING
MORGAN COUNTY

C-96-158-10

F.A.P. RTE.	SECTION	COUNTY	TOTAL SHEETS	SHEET NO.
753	(128X)RS-3	MORGAN	26	1
		ILLINOIS	CONTRACT NO. 72C66	

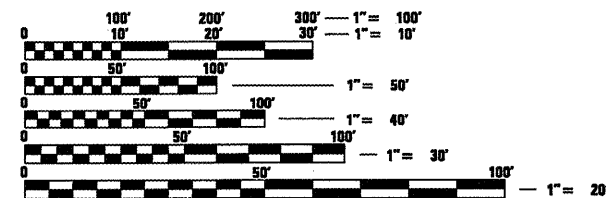
FOR INDEX OF SHEETS, SEE SHEET NO. 2

D-96-057-09



ADT 2309
PV = 87%
SU = 8%
MU = 5%

R.R. OMISSION
STA. 464 + 90.00 - 471 + 40.00

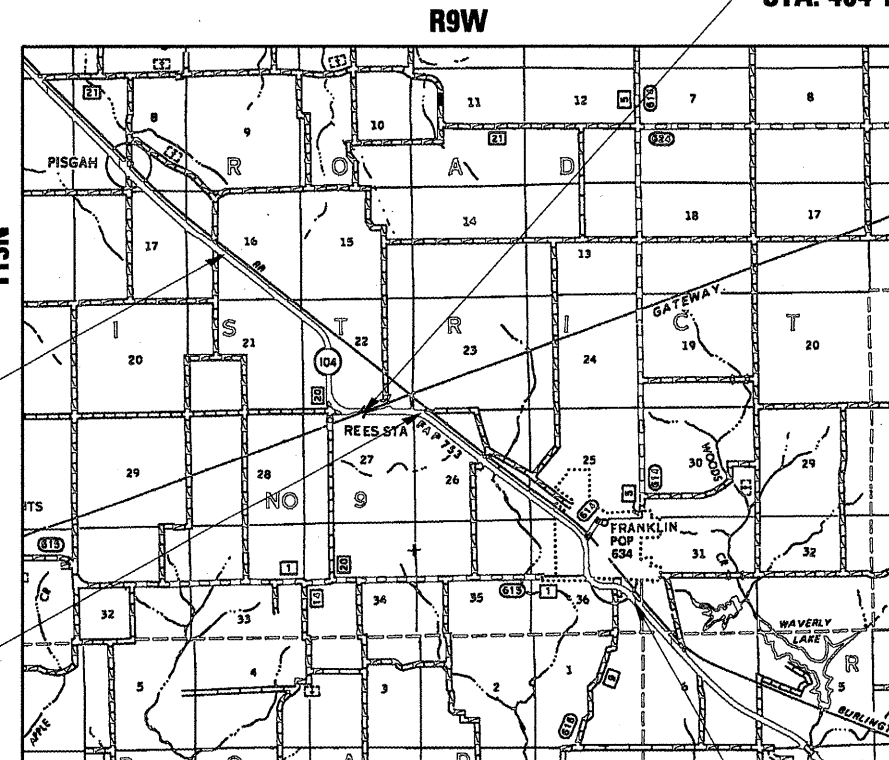


FULL SIZE PLANS HAVE BEEN PREPARED USING STANDARD ENGINEERING SCALES. REDUCED SIZED PLANS WILL NOT CONFORM TO STANDARD SCALES. IN MAKING MEASUREMENTS ON REDUCED PLANS, THE ABOVE SCALES MAY BE USED.

J.U.L.I.E.
JOINT UTILITY LOCATION INFORMATION FOR EXCAVATION
1-800-892-0123
OR 811

STA. 350 + 00.00
BEGIN PROJECT

STATION EQUATION:
504 + 61.07 (BK) =
486 + 43.30 (AH)



STA. 631 + 20.00
END PROJECT

GROSS LENGTH = 29,644 FT. = 5.61 MILE
NET LENGTH = 28,994 FT. = 5.49 MILE

PROJECT ENGINEER: JOHN NEGANGARD (217) 782-6990
PROJECT MANAGER: JULIET SHOULTZ (217) 785-2739

CONTRACT NO. 72C66

STATE OF ILLINOIS
DEPARTMENT OF TRANSPORTATION
DIVISION OF HIGHWAYS

SUBMITTED March 26 20 10
Roger Z. Dinkler
DEPUTY DIRECTOR OF HIGHWAYS, REGION ENGINEER

May 7 20 10
Scott E. Stitt, P.E.
ACTING ENGINEER OF DESIGN AND ENVIRONMENT

May 7 20 10
Christine M. Reed, P.E.
DIRECTOR OF HIGHWAYS, CHIEF ENGINEER

PRINTED BY THE AUTHORITY
OF THE STATE OF ILLINOIS

INDEX OF SHEETS

- 1 COVER SHEET
- 2 INDEX OF SHEETS & GENERAL NOTES
- 3 SUMMARY OF QUANTITIES
- 4-6 SCHEDULE OF QUANTITIES
- 7-12 TYPICAL SECTIONS
- 13-23 PLAN SHEETS
- 24-25 SIDE ROAD DETAILS
- 26 BUTT JOINT DETAIL

RATES OF APPLICATION

THE FOLLOWING RATES OF APPLICATION HAVE BEEN ASSUMED IN CALCULATING PLAN QUANTITIES.

BITUMINOUS (PRIMECOAT)	0.00038 TON / SY
AGGREGATE (PRIMECOAT)	0.002 TON / SY
HOT-MIX ASPHALT SURFACE COURSE	0.056 TON / SY - IN
AGGREGATE	2.05 TON / CY
LEVELING BINDER	0.056 TON / SY - IN

MIXTURE REQUIREMENTS

MIXTURE USE(S):	HMA SURFACE	HMA SHOULDER	INCIDENTAL SURF.	LEVELING BINDER	PATCHING
PG:	PG 64-22	PG 58-22	PG 64-22	PG 64-22	PG 64-22
DESIGN AIR VOIDS:	4.0% @ N50	2.0% @ N 30	4.0% @ N50	4.0% @ N50	4.0% @ N50
MIXTURE COMPOSITION:	IL 9.5 or 12.5	BAM	IL 9.5 or 12.5	IL 9.5	IL 19.0
FRICITION AGGREGATE:	Mix C	N/A	Mix C	N/A	N/A

HIGHWAY STANDARDS

000001-05	DISTRICT SIX	
442201-03	EXAMINED <i>March 23</i>	20 <i>10</i>
701201-03	<i>[Signature]</i>	
701301-03	OPERATIONS ENGINEER	
701306-02	EXAMINED <i>March 19</i>	20 <i>14</i>
701311-03	<i>[Signature]</i>	
701501-05	PROGRAM DEVELOPMENT ENGINEER	
701901-01	EXAMINED <i>MARCH 22</i>	20 <i>10</i>
781001-03	<i>[Signature]</i>	
	PROGRAM IMPLEMENTATION ENGINEER	

COMMITMENTS

COMMITMENTS ARE NOT TO BE ALTERED WITHOUT THE WRITTEN APPROVAL OF ALL PARTIES TO WHICH THE COMMITMENT WAS MADE.

- 1.) THE RESIDENT ENGINEER SHALL CONTACT STUDIES AND PLANS CONCERNING ANY MAJOR PLAN CHANGE, TO MAKE SURE NO PREVIOUS COMMITMENTS (NOT LISTED) WERE MADE AFFECTING THE DESIGN AND ALLOW AN IMPROVED DESIGN FOR FUTURE PROJECTS.
- 2.) INFORMATIONAL LETTER TO THE CITY OF FRANKLIN.

GENERAL NOTES

WHERE SECTION OR SUBSECTION MONUMENTS ARE ENCOUNTERED, THE ENGINEER SHALL BE NOTIFIED BEFORE SUCH MONUMENTS ARE REMOVED. THE CONTRACTOR SHALL PROTECT AND CAREFULLY PRESERVE ALL PROPERTY MARKS, MONUMENTS, AND PERMANENT SURVEY MARKERS UNTIL THE OWNER, AND AUTHORIZED SURVEYOR OR AGENT HAS WITNESSES OR OTHERWISE REFERENCED

THE NOMINAL THICKNESS FOR BASE AND SURFACE COURSES ARE SHOWN ON THE TYPICAL SECTIONS, STANDARDS, SCHEDULES, OR SPECIAL DETAILS. THE CONSTRUCTED THICKNESS OF THE ABOVE ITEM SHALL NOT BE LESS THAN 90 PERCENT OF THE NOMINAL THICKNESS AT ANY LOCATION.

THE THICKNESS OF HOT-MIX ASPHALT MIXTURE SHOWN ON THE PLANS IS THE NOMINAL THICKNESS. DEVIATIONS FROM THE NOMINAL THICKNESS WILL BE PERMITTED WHEN SUCH DEVIATION OCCUR DUE TO IRREGULARITIES IN THE EXISTING SURFACE OR BASE ON WHICH THE HOT-MIX ASPHALT MIXTURE IS PLACED.

ANY REFERENCE TO A STANDARD IN THE PLANS SHALL BE INTERPRETED TO MEAN THE EDITION, AS INDICATED BY THE SUB-NUMBER LISTED IN THE INDEX OF SHEETS, OR THE COPY OF THE STANDARD INCLUDED IN THE PLANS.

THE LOCATIONS OF EXISTING WATER MAINS, GAS MAINS, SEWERS, ELECTRIC POWER LINES, TELEPHONE LINES AND OTHER UTILITIES AS SHOWN ON THE PLANS ARE BASED ON THE BEST INFORMATION AVAILABLE, BUT THEY ARE NOT GUARANTEED, ALL UTILITY LOCATIONS SHOWN ARE SUPPLIED BY THE UTILITY COMPANIES. IT IS THE CONTRACTOR'S RESPONSIBILITY TO ASCERTAIN THEIR EXACT LOCATION FROM THE UTILITY COMPANIES AND BY FIELD INSPECTION.

ACCESS MUST BE MAINTAINED TO ALL EXISTING PROPERTIES DURING CONSTRUCTION PER ARTICLE 107.09 UNLESS ARRANGEMENTS ARE MADE IN WRITING BY THE CONTRACTOR WITH THE PROPERTY OWNERS WITH A COPY TO THE ENGINEER FOR SHORT-TERM CLOSURES

ALL ELEVATIONS SHOWN ON THE PLANS ARE ESTABLISHED FROM U.S.G.S. MEAN SEAL LEVEL DATUM.

CONTINUOUS PAVING OPERATIONS ON THE MAIN ROADWAY SHALL BE MAINTAINED AT ALL TIMES DURING THE CONSTRUCTION OF THE HOT-MIX ASPHALT SURFACE. NO INTERRUPTIONS FOR SIDE ROADS, ENTRANCE, TURN LANES, ETC. WILL BE ALLOWED.

THE DISTRICT BUREAU OF OPERATIONS SHALL BE NOTIFIED AT LEAST 14 DAYS PRIOR TO PLACEMENT OF FINAL PAVEMENT MARKINGS. PHONE: (217) 782-7314

Code No.	Item	Unit	Total	100% STATE 1000
20201006	GRADING AND SHAPING SHOULDERS	UNIT	543	543
35800100	PREPARATION OF BASE	SQ YD	3,693	3,693
40200800	AGGREGATE SURFACE COURSE, TYPE B	TON	72	72
40600200	BITUMINOUS MATERIALS (PRIME COAT)	TON	92	92
40600300	AGGREGATE (PRIME COAT)	TON	470	470
40600625	LEVELING BINDER (MACHINE METHOD), N50	TON	3,592	3,592
40600895	CONSTRUCTING TEST STRIP	EACH	1	1
40600982	HOT-MIX ASPHALT SURFACE REMOVAL - BUTT JOINT	SQ YD	3,394	3,394
40600990	TEMPORARY RAMP	SQ YD	38	38
40603310	HOT-MIX ASPHALT SURFACE COURSE, MIX "C", N50	TON	7,184	7,184
40800050	INCIDENTAL HOT-MIX ASPHALT SURFACING	TON	517	517
48101200	AGGREGATE SHOULDERS, TYPE B	TON	1,545	1,545
44000198	HOT-MIX ASPHALT SURFACE REMOVAL, VARIABLE DEPTH	SQ YD	85,493	85,493
44200164	PAVEMENT PATCHING, TYPE I, 14 INCH	SQ YD	55	55
44200168	PAVEMENT PATCHING, TYPE II, 14 INCH	SQ YD	880	880
44200172	PAVEMENT PATCHING, TYPE III, 14 INCH	SQ YD	385	385
44200174	PAVEMENT PATCHING, TYPE IV, 14 INCH	SQ YD	330	330
48203100	HOT-MIX ASPHALT SHOULDERS	TON	444	444
67000400	ENGINEER'S FIELD OFFICE, TYPE A	CAL MO	6	6
67100100	MOBILIZATION	LSUM	1	1
70100450	TRAFFIC CONTROL AND PROTECTION, STANDARD 701201	LSUM	1	1
70100460	TRAFFIC CONTROL AND PROTECTION, STANDARD 701306	LSUM	1	1
70102620	TRAFFIC CONTROL AND PROTECTION, STANDARD 701501	LSUM	1	1
70300100	SHORT-TERM PAVEMENT MARKING	FOOT	6,208	6,208
70301000	WORK ZONE PAVEMENT MARKING REMOVAL	SQ FT	1,035	1,035
* 78000300	THERMOPLASTIC PAVEMENT MARKING - LINE 5"	FOOT	610	610
* 78000600	THERMOPLASTIC PAVEMENT MARKING - LINE 12"	FOOT	105	105
* 78001120	PAINT PAVEMENT MARKING - LINE 5"	FOOT	83,775	83,775
* 78003100	PREFORMED PLASTIC PAVEMENT MARKING, TYPE B - LETTERS AND SYMBOLS	SQ FT	32	32
* 78004240	PREFORMED PLASTIC PAVEMENT MARKING, TYPE B - INLAID - LINE 8"	FOOT	302	302
* 78004250	PREFORMED PLASTIC PAVEMENT MARKING, TYPE B - INLAID - LINE 12"	FOOT	115	115
* 78004280	PREFORMED PLASTIC PAVEMENT MARKING, TYPE B - INLAID - LINE 24"	FOOT	38	38
* 78100100	RAISED REFLECTIVE PAVEMENT MARKER	EACH	369	369
78300200	RAISED REFLECTIVE PAVEMENT MARKER REMOVAL	EACH	369	369

* SPECIALTY ITEM

FILE NAME =	USER NAME = laughlinr1	DESIGNED -	REVISED -	STATE OF ILLINOIS DEPARTMENT OF TRANSPORTATION	SUMMARY OF QUANTITIES				F.A.P. RTE.	SECTION	COUNTY	TOTAL SHEETS	SHEET NO.
c:\pwork\pvidot\LAUGHLINRL\012039\0672C66-shr-500.dgn		DRAWN -	REVISED -		753	128XRS-3	MORGAN	26	3				
PLOT SCALE = 40.0000' / IN.		CHECKED -	REVISED -						CONTRACT NO. 72C66				
PLOT DATE = Mar-29-2010 10:00:29AM		DATE -	REVISED -		SCALE:	SHEET NO. 3 OF 26 SHEETS	STA.	TO STA.	ILLINOIS FED. AID PROJECT				

RESURFACING SCHEDULE															
Sta to Sta	Length	Pav. W	HMA Shldr W	Pav. Area	Bit Mat Prime Coat	Agg Prime Coat	HMA Surface	HMA Surf Rem	Leveling Binder	Agg Shoulder	HMA Shoulder	Grade & Shape Shld	Butt Joint	Temp Ramps	
	(FT)	(FT)	(FT)	(SY)	(TON)	(TON)	(TON)	(SY)	(TON)	(TON)	(TON)	(UNIT)	(SY)	(SY)	
MAINLINE															
350+00	411+51	6,151	26	--	17,770	13.5	71.1	1,493	17,683	746	350	--	123	86.7	14.4
411+51	430+50	1,899	26	--	5,487	4.2	21.9	461	5,487	230	108	--	38	--	--
430+50	446+30	1,580	26	--	4,563	3.5	18.3	383	4,563	192	90	--	32	--	--
446+30	464+73	1,843	26	--	5,324	4.0	21.3	447	5,324	224	105	--	37	--	--
464+73	464+90	17	26	--	49	0.1	0.2	4	49	2	1	--	1	--	--
RAILROAD OMISSION: STA 464+90 TO 471+40															
471+40	491+34	1,994	26	--	5,761	4.4	23.0	484	5,761	242	114	--	40	--	--
491+34	504+61	1,327	26	--	3,833	2.9	15.3	322	3,833	161	76	--	27	--	--
STA. EQ. 504+61.07(BK) = 486+43.30 (AH)															
486+43	568+94	8,251	26	--	23,836	18.1	95.3	2,002	23,836	1,001	470	--	165	--	--
568+94	576+00	706	26	--	2,038	1.5	8.2	171	2,038	86	40	--	14	--	--
576+00	579+00	300	26	7	866	2.3	11.9	73	866	36	9	29	3	--	--
579+00	587+73	874	26	7	2,524	6.6	34.6	212	2,524	106	25	86	9	--	--
587+73	603+00	1,527	26	7	4,410	11.5	60.4	370	4,410	185	43	150	15	--	--
603+00	604+81	181	26	14	522	2.3	12.2	44	522	22	--	35	--	--	--
604+81	608+73	392	26	14	1,133	5.0	26.5	95	1,133	48	--	77	--	--	--
608+73	610+00	127	26	14	368	1.6	8.6	31	368	15	--	25	--	--	--
610+00	612+00	200	26	7	578	1.5	7.9	49	578	24	6	20	2	--	--
612+00	618+67	667	26	--	1,928	1.5	7.7	162	1,928	81	38	--	13	--	--
618+67	631+20	1,253	26	--	3,619	2.8	14.5	304	3,619	152	71	--	25	28.9	14.4
MAINLINE TOTAL		29,288				87	459	7107	84522	3554	1545	421	543	116	29
WEST STREET															
+28	3+00	271.67	17	6	513	0.4	2.1	43	513	22	--	23	--	19	9
TURN LANES		100.00	36	--	400	0.3	1.6	34	400	17	--	--	--	--	--
WEST STREET TOTAL						1	4	77	913	38	0	23	0	19	9
GRAND TOTAL						88	462	7,184	85,436	3,592	1,545	444	543	134	38
PAVEMENT PATCHING															
Type	(SY)														
TY I	55														
TY II	880														
TY III	385														
TY IV	330														

PAVEMENT MARKING SCHEDULE								
STATION TO STATION		LENGTH	SHORT-TERM		WORKZONE PAVT MKG REMOVAL	RAIS. REFL. PAVT MKR	RAIS REFL. PAVT MKR REMOVAL	
			CENTERLINE PAVT MKG	EDGE LINE PAVT MKG				
		(FT)	(FT)	(FT)	(SQ FT)	(EACH)	(EACH)	
350+00	464+90	11,490	2298	--	383	144	144	
RAILROAD OMISSION: STA 464+90 TO 471+40								
471+40	504+61	3,321	664	--	111	42	42	
STA. EQ. 504+61.07(BK) = 486+43.30 (AH)								
486+43	631+20	14,477	2895	--	483	181	181	
576+00	612+00	3,600	--	296	49	--	--	
WEST STREET								
+28	3+00	272	54	--	9	3	3	
		SUB-TOTAL	5912	296	1035	369	369	
		TOTALS	6208		1035	369	369	

PAINT PAVT MKG 5"						
STATION TO STATION		LENGTH	EDGE OF PAVEMENT	DBL NO PASS	SINGLE NO PASS	SKIP DASH
		(FT)	(FT)	(FT)	(FT)	(FT)
350+00	631+20	28,120	56,240	10624	9542	6825
WEST STREET						
+28	3+00	272	544	--	--	--
		SUB-TOTALS	56784	10624	9542	6825
		TOTAL	83775			

STATION TO STATION	THERMOPLASTIC		PREFORMED PLASTIC TYPE B - INLAID			LETTERS & SYMBOLS
	5" YELLOW	12" YELLOW	24" WHITE	8" WHITE	12" WHITE	
	(FT)	(FT)	(FT)	(FT)	(FT)	(SQ FT)
WEST STREET						
STOP BAR	--	--	38	--	--	
TURN ARROWS	--	--	--	--	--	32
ISLAND MARKING	--	--	--	302	115	
CHANNELIZATION	610	105	--	--	--	
TOTALS	610	105	38	302	115	32

FILE NAME =	USER NAME = laughlinr1	DESIGNED -	REVISED -
e:\pwwork\PWIDOT\LAUGHLINRL\0120394\0672C66-ah-t-schedule.dgn		DRAWN -	REVISED -
	PLOT SCALE = 40.0000' / IN.	CHECKED -	REVISED -
	PLOT DATE = Mar-29-2010 10:06:52AM	DATE -	REVISED -

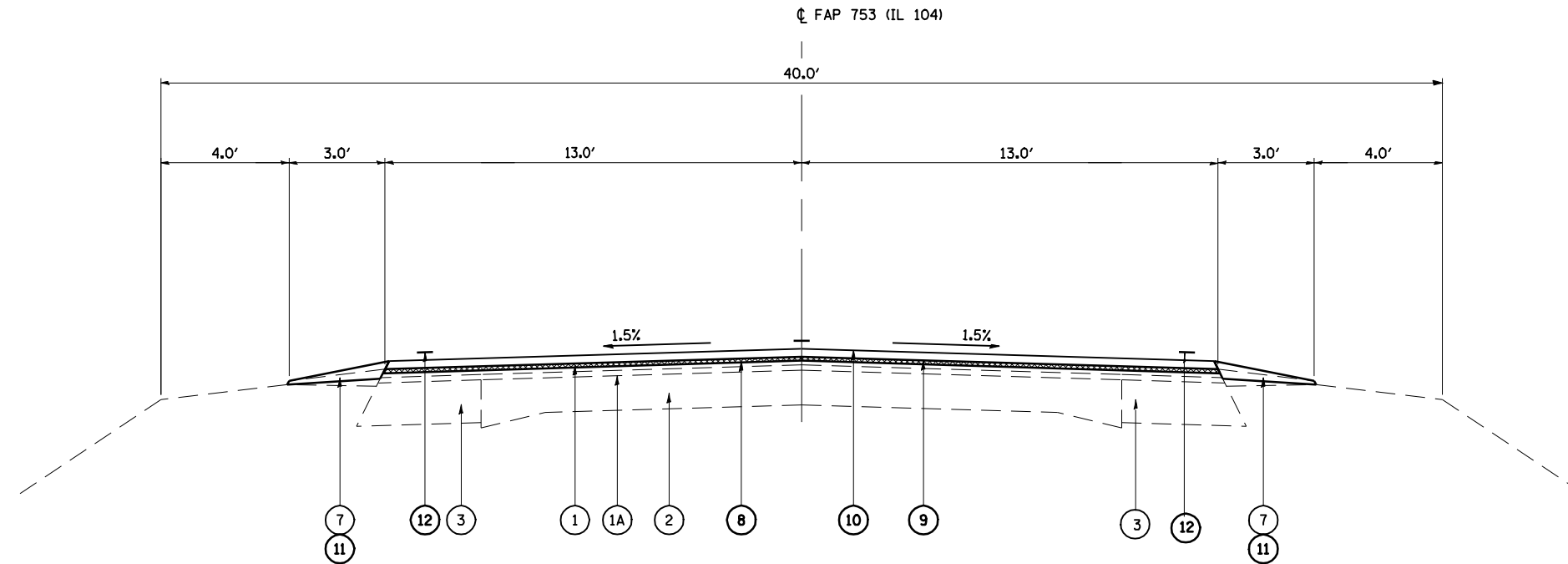
**STATE OF ILLINOIS
DEPARTMENT OF TRANSPORTATION**

PAVEMENT MARKING SCHEDULE

SCALE: SHEET NO. 5 OF 26 SHEETS STA. TO STA.

F.A.P. RTE.	SECTION	COUNTY	TOTAL SHEETS	SHEET NO.
753	128XRS-3	MORGAN	26	5
CONTRACT NO. 72C66			ILLINOIS FED. AID PROJECT	

ENTRANCE IMPROVEMENT SCHEDULE												
LOCATION	TYPE OF ENTRANCE	MATERIAL TYPE	WIDTH (EDGE OF PAVEMENT)	WIDTH (ENTRANCE WIDTH)	LENGTH (EOP/BIT SHLD TO LIMITS OF IMPRV)	AREA	PREP. OF BASE	HMA SURF REM. - BUTT JOINT	BIT MATLS (P.C.)	AGG (P.C.)	INCIDENTAL BIT.SURF.	AGG. SURF CRSE. TYPE B
STATION	(FE / PE / CE / MB)	(EX / PR)	FOOT	FOOT	FOOT	SQ. YD.	SQ. YD.	SQ. YD.	TON	TON	TON	TON
STA. 351+72	WOOD ROAD	HMA	57	35	20	102	102	102	0.1	0.2	14	--
STA. 352+30	WOOD ROAD	HMA	57	35	29	148	148	148	0.1	0.3	21	--
STA. 448+80	REESE STATION RD	HMA	195	134	29	530	530	530	0.2	1.1	74	--
STA. 460+70	REES ROAD	HMA	169	89	53	760	760	760	0.3	1.5	106	--
STA. 463+62	PE	HMA	45	33	8	35	35	35	0.1	0.1	5	--
STA. 463+71	MB	HMA	55	45	8	44	44	44	0.1	0.1	6	--
STA. 475+78	PE	HMA	45	33	8	35	35	35	0.1	0.1	5	--
STA 478+33	PE	AGG	46	34	8	36	36	---	0.1	0.1	5	5
STA. 478+49	FINN ROAD	HMA	73	30	28	160	160	160	0.1	0.3	22	--
STA 492+45	PE	HMA	51	42	8	41	41	41	0.1	0.1	6	--
STA 493+20	PE	HMA	55	47	8	45	45	45	0.1	0.1	6	--
STA 513+60	RANSON ROAD	HMA	62	28	24	120	120	120	0.1	0.2	17	--
STA 513+60	RANSON ROAD	HMA	73	27	44	244	244	244	0.1	0.5	34	--
STA 514+10	CE	HMA	70	62	8	59	59	59	0.1	0.1	8	--
STA 516+00	CE	HMA	73	62	8	60	60	60	0.1	0.1	8	--
STA 518+55	PE	HMA	44	34	7	30	30	30	0.1	0.1	4	--
STA 524+25	CE	AGG	104	92	8	87	87	---	0.1	0.2	12	12
STA 526+50	CE	HMA	69	62	10	73	73	73	0.1	0.1	10	--
STA 530+73	PE	HMA	52	47	8	44	44	44	0.1	0.1	6	--
STA 537+40	MB	AGG	10	16	8	12	12	---	0.1	0.1	2	2
STA 537+40	PE	AGG	46	34	9	40	40	---	0.1	0.1	6	6
STA 551+93	PE	HMA	43	25	30	113	113	113	0.1	0.2	16	--
STA 551+93	MB	HMA	37	20	5	16	16	16	0.1	0.1	2	--
STA 556+65	PE	AGG	24	30	10	30	30	---	0.1	0.1	4	4
STA 574+01	CE	HMA	52	32	23	107	107	107	0.1	0.2	15	--
STA 574+56	CE	HMA	55	38	20	103	103	103	0.1	0.2	14	--
STA 576+22	PE	AGG	43	37	15	67	67	---	0.1	0.1	9	9
STA 585+12	MB	HMA	24	16	8	18	18	---	0.1	0.1	2	14
STA 585+64	PE	AGG	48	20	8	30	30	---	0.1	0.1	4	4
STA 586+24	MB	AGG	16	16	8	14	14	---	0.1	0.1	2	2
STA 591+68	SIDE ROAD	HMA	109	55	33	301	301	301	0.1	0.6	42	--
STA 598+90	PE	AGG	34	19	8	24	24	--	0.1	0.1	3	3
STA 599+15	PE	AGG	44	41	10	47	47	--	0.1	0.1	7	7
STA 603+31	PE	AGG	35	25	9	30	30	--	0.1	0.1	4	4
STA 605+94	HARTS PRAIRIE	HMA	30	16	10	26	26	26	0.1	0.1	4	--
STA 609+84	CHEYENNE	HMA	30	16	10	26	26	26	0.1	0.1	4	--
STA 612+76	PE	HMA	45	38	8	37	37	37	0.1	0.1	5	--
TOTAL						3693	3693	3260	4	8	517	72



LEGEND

- ① EXISTING HOT-MIX ASPHALT CONCRETE SURFACE COURSE, MIX "D", CLASS I, TY 2 (1 1/2")
- ①A EXISTING HOT-MIX ASPHALT CONCRETE SURFACE (3±")
- ② EXISTING CONCRETE PAVEMENT (9-6 1/2-9)
- ③ EXISTING HOT-MIX ASPHALT WIDENING
- ④ EXISTING CONCRETE GUTTER TY A
- ⑤ EXISTING CONCRETE GUTTER TY B
- ⑥ EXISTING HOT-MIX ASPHALT SHOULDER
- ⑦ EXISTING AGGREGATE SHOULDER TY B
- ⑧ PROPOSED HOT-MIX ASPHALT SURFACE REMOVAL (VARIABLE DEPTH)
- ⑨ PROPOSED LEVELING BINDER (MACHINE METHOD) 3/4"
- ⑩ PROPOSED HOT-MIX ASPHALT SURFACE COURSE, MIX "C", 1 1/2"
- ⑪ PROPOSED AGGREGATE SHOULDERS TY B
- *** ⑫ PROPOSED PAVEMENT MARKING, LINE (5')
- ⑬ PROPOSED HOT-MIX ASPHALT SHOULDER, 2 1/4"

*** NOTE: STRIPE LANES AT 12'

- STA. 350+00.00 - 409+21.10
- STA. 409+21.10 - 411+51.10 S.E. TRANSITION
- STA. 430+50.36 - 444+00.00
- STA. 444+00.00 - 446+30.00 S.E. TRANSITION
- STA. 464+73.00 - 464+94.00
- STA. 471+39.00 - 489+04.40
- STA. 489+04.40 - 491+34.14 S.E. TRANSITION
- STA. *487+96.63 - 566+64.38
- STA. 566+64.38 - 568+94.38 S.E. TRANSITION
- STA. 618+67.23 - 630+68.00

* AFTER EQUATION STA. 504+61.07 = 486+43.30

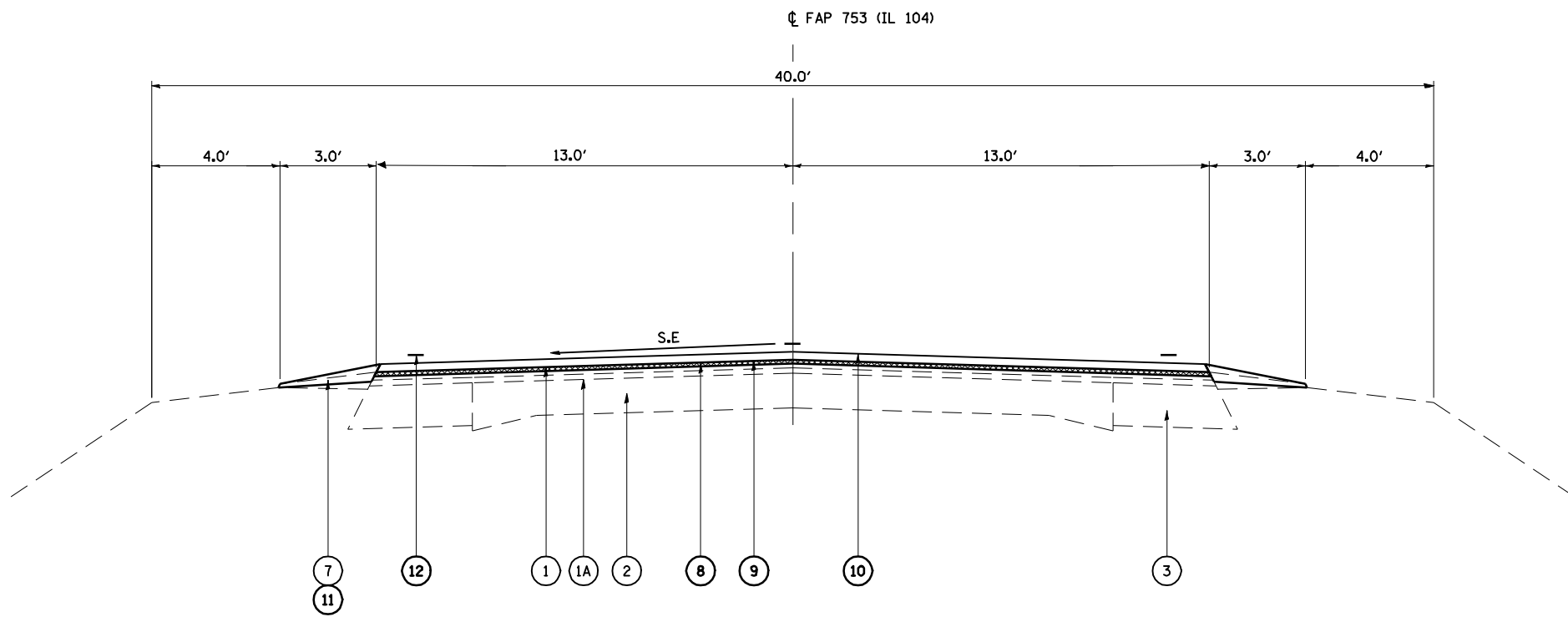
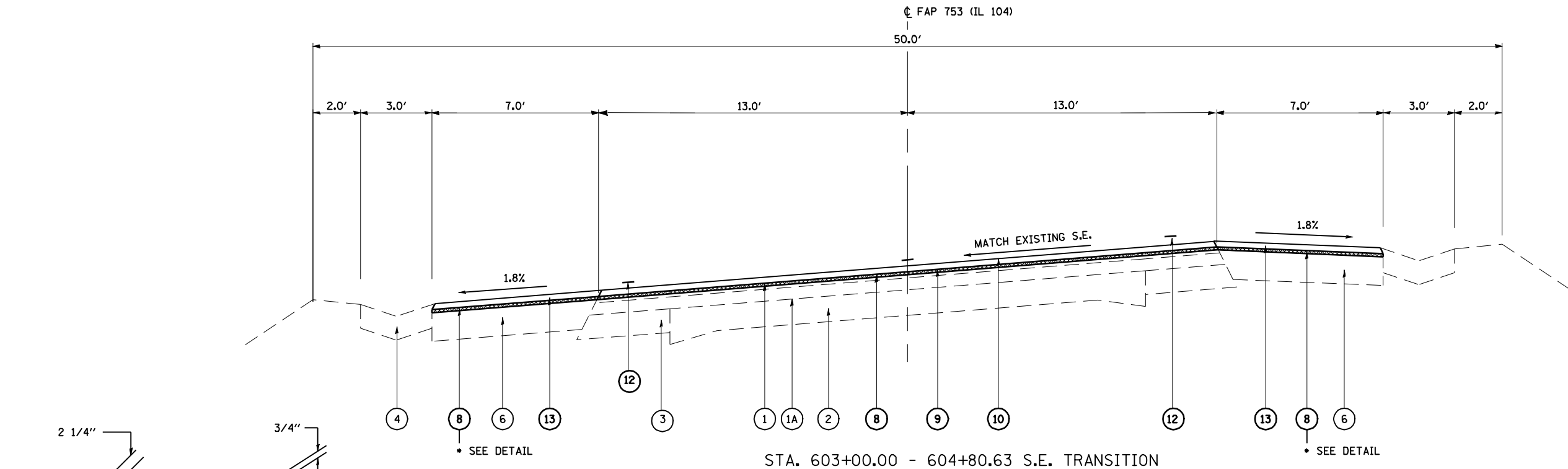
FILE NAME =	USER NAME = laughlinr1	DESIGNED -	REVISED -
ea\pwwork\PWIDOT\LAUGHLINRL\0120394\0672C66-ah-t-typico1.dgn		DRAWN -	REVISED -
	PLOT SCALE = 10.0000 ' / IN.	CHECKED -	REVISED -
	PLOT DATE = Mar-29-2010 10:07:07AM	DATE -	REVISED -

**STATE OF ILLINOIS
DEPARTMENT OF TRANSPORTATION**

TYPICAL SECTIONS

SCALE: SHEET NO. 7 OF 26 SHEETS STA. TO STA.

F.A.P. RTE.	SECTION	COUNTY	TOTAL SHEETS	SHEET NO.
753	128XRS-3	MORGAN	26	7
CONTRACT NO. 72C66			ILLINOIS FED. AID PROJECT	



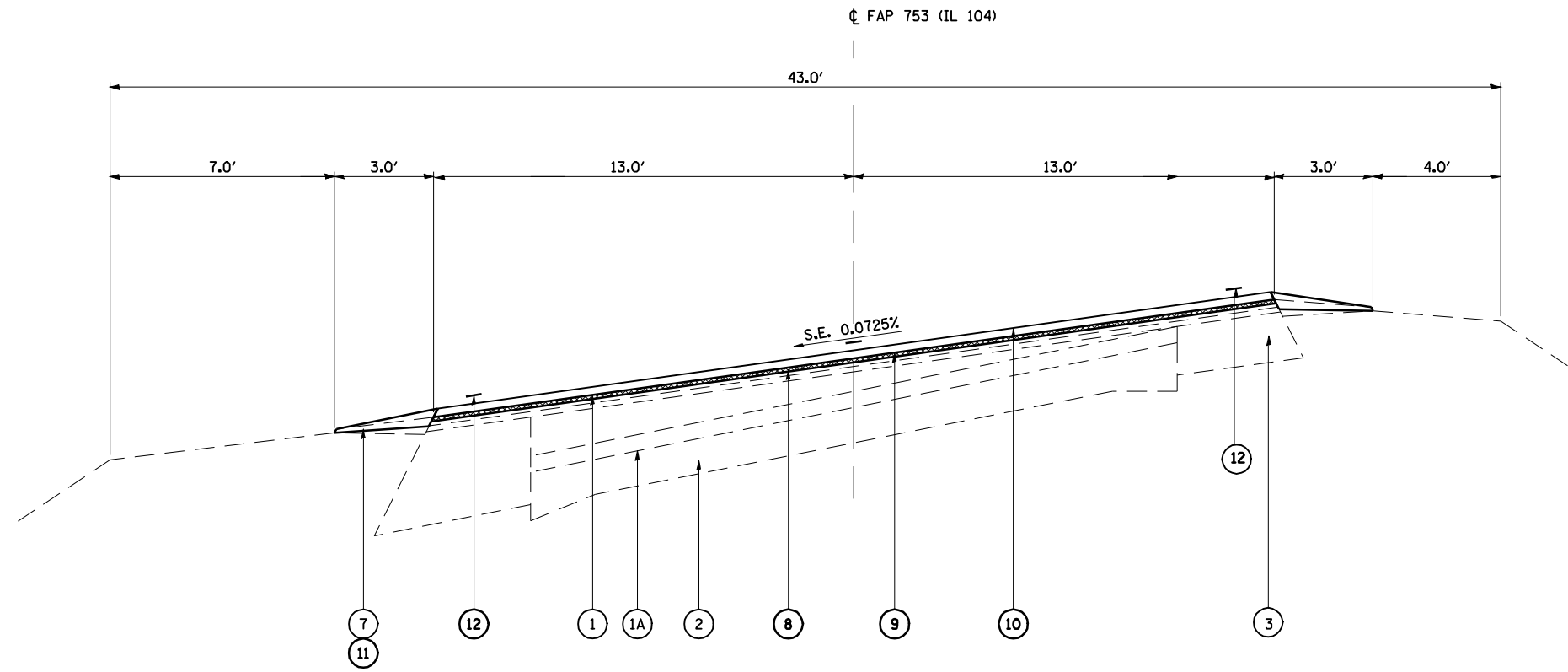
STA. 411+51.10 - 428+20.36, S.E. = 6.63'/'
 STA. 428+20.36 - 430+50.36 S.E. TRANSITION
 STA. 491+34.14 - 503+84.40, BK S.E. = 6.63'/'
 STA. 504+61.07 (BK) - 486+43.30 (AH) S.E. TRANSITION
 STA. 568+94.38 - 576+00.00 S.E. = 0.077'/'
 STA. 612+00.00 - 616+37.23 S.E. = 0.077'/'
 STA. 616+37.23 - 618+67.23 S.E. TRANSITION

LEGEND

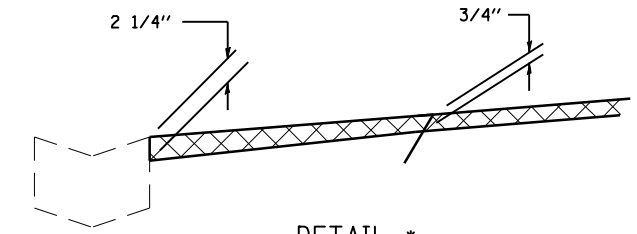
- ① EXISTING HOT-MIX ASPHALT CONCRETE SURFACE COURSE, MIX "D", CLASS I, TY 2 (1 1/2")
- ①A EXISTING HOT-MIX ASPHALT CONCRETE SURFACE (3±")
- ② EXISTING CONCRETE PAVEMENT (9-6 1/2-9)
- ③ EXISTING HOT-MIX ASPHALT WIDENING
- ④ EXISTING CONCRETE GUTTER TY A
- ⑤ EXISTING CONCRETE GUTTER TY B
- ⑥ EXISTING HOT-MIX ASPHALT SHOULDER
- ⑦ EXISTING AGGREGATE SHOULDER TY B
- ⑧ PROPOSED HOT-MIX ASPHALT SURFACE REMOVAL (VARIABLE DEPTH)
- ⑨ PROPOSED LEVELING BINDER (MACHINE METHOD) 3/4"
- ⑩ PROPOSED HOT-MIX ASPHALT SURFACE COURSE, MIX "C", 1 1/2"
- ⑪ PROPOSED AGGREGATE SHOULDERS TY B
- *** ⑫ PROPOSED PAVEMENT MARKING, LINE (5')
- ⑬ PROPOSED HOT-MIX ASPHALT SHOULDER, 2 1/4"

*** NOTE: STRIPE LANES AT 12'

FILE NAME =	USER NAME = laughlinr1	DESIGNED -	REVISED -	STATE OF ILLINOIS DEPARTMENT OF TRANSPORTATION	TYPICAL SECTIONS			F.A.P. RTE.	SECTION	COUNTY	TOTAL SHEETS	SHEET NO.
es:\pwwork\pwwid\LAUGHLINRL\0120394\0672C66-ah-t-typico1.dgn		DRAWN -	REVISED -		753	128XRS-3	MORGAN	26	8			
PLOT SCALE = 10.0000 ' / IN.		CHECKED -	REVISED -		CONTRACT NO. 72C66			ILLINOIS FED. AID PROJECT				
PLOT DATE = Mar-29-2010 10:07:11AM		DATE -	REVISED -		SCALE:	SHEET NO. 8 OF 26 SHEETS	STA.	TO STA.				



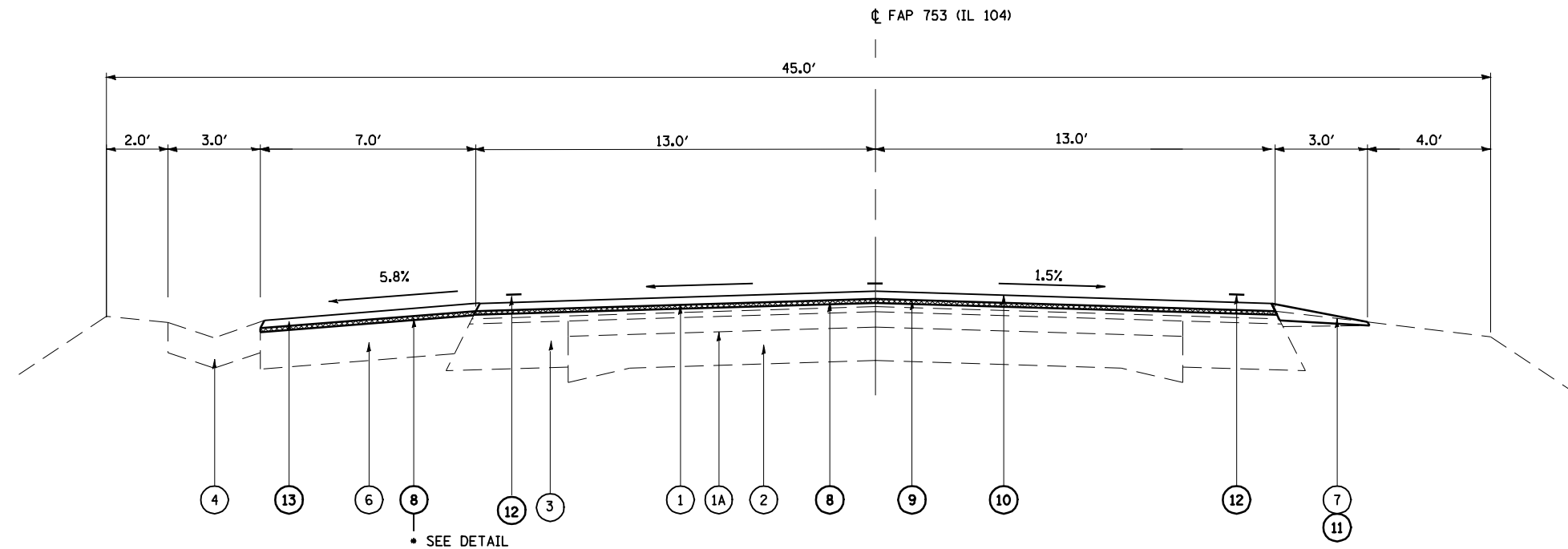
STA. 446+30.00 - 461+73.00 S.E. = 0.0725%
 STA. 461+73.00 - 464+73.00 S.E. TRANSITION



LEGEND

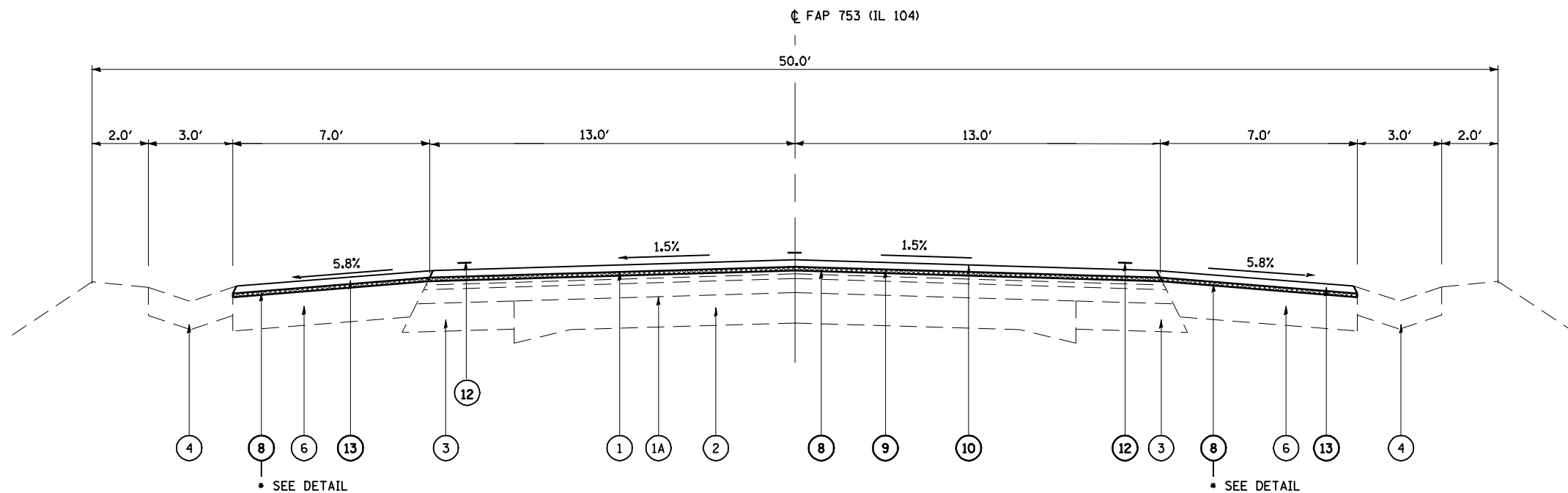
- ① EXISTING HOT-MIX ASPHALT CONCRETE SURFACE COURSE, MIX "D", CLASS I, TY 2 (1 1/2")
- ①A EXISTING HOT-MIX ASPHALT CONCRETE SURFACE (3±")
- ② EXISTING CONCRETE PAVEMENT (9-6 1/2-9)
- ③ EXISTING HOT-MIX ASPHALT WIDENING
- ④ EXISTING CONCRETE GUTTER TY A
- ⑤ EXISTING CONCRETE GUTTER TY B
- ⑥ EXISTING HOT-MIX ASPHALT SHOULDER
- ⑦ EXISTING AGGREGATE SHOULDER TY B
- ⑧ PROPOSED HOT-MIX ASPHALT SURFACE REMOVAL (VARIABLE DEPTH)
- ⑨ PROPOSED LEVELING BINDER (MACHINE METHOD) 3/4"
- ⑩ PROPOSED HOT-MIX ASPHALT SURFACE COURSE, MIX "C", 1 1/2"
- ⑪ PROPOSED AGGREGATE SHOULDERS TY B
- *** ⑫ PROPOSED PAVEMENT MARKING, LINE (5')
- ⑬ PROPOSED HOT-MIX ASPHALT SHOULDER, 2 1/4"

*** NOTE: STRIPE LANES AT 12'

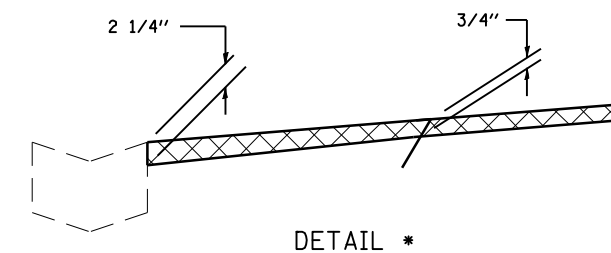


STA. 578+99.86 - 585+43.47
 STA. 585+43.47 - 587+73.47 S.E. TRANSITION

FILE NAME =	USER NAME = laughlinr1	DESIGNED -	REVISED -	STATE OF ILLINOIS DEPARTMENT OF TRANSPORTATION	TYPICAL SECTIONS		F.A.P. RTE.	SECTION	COUNTY	TOTAL SHEETS	SHEET NO.
es:\pwwork\pwwid\LAUGHLINRL\0120394\0672C66-ah-t-typico1.dgn		DRAWN -	REVISED -		753	128XRS-3	MORGAN	26	9		
PLOT SCALE = 10.0000 "/>											
PLOT DATE = Mar-29-2010 10:07:15AM	DATE -	REVISED -	SCALE:		SHEET NO. 9 OF 26 SHEETS	STA.	TO STA.	ILLINOIS FED. AID PROJECT			



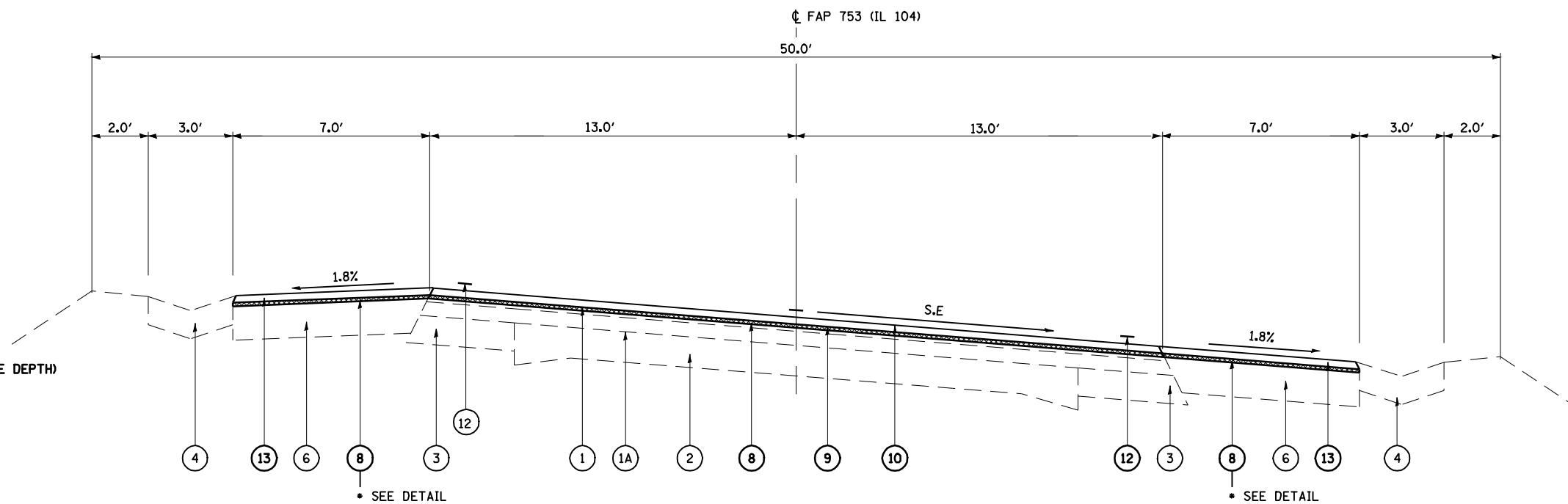
STA. 604+80.63 - 606+42.69
 STA. 606+42.69 - 608+72.69 S.E. TRANSITION



LEGEND

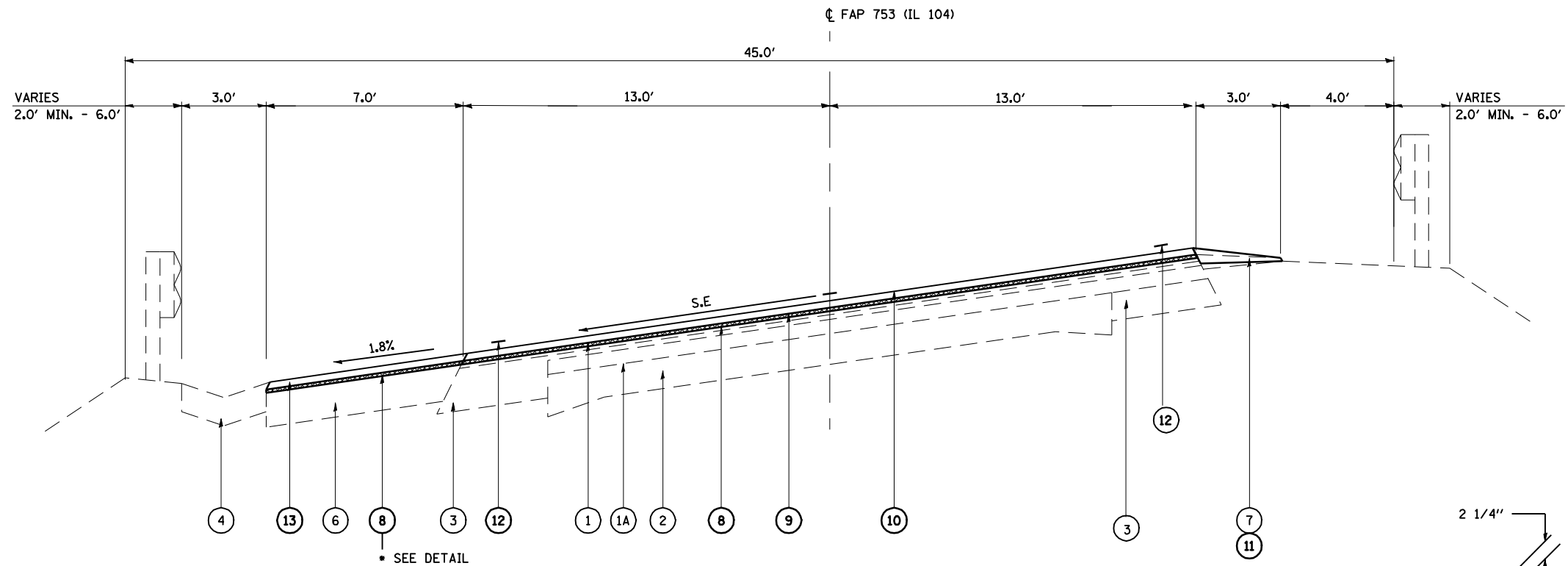
- ① EXISTING HOT-MIX ASPHALT CONCRETE SURFACE COURSE, MIX "D", CLASS I, TY 2 (1 1/2")
- ①A EXISTING HOT-MIX ASPHALT CONCRETE SURFACE (3±")
- ② EXISTING CONCRETE PAVEMENT (9-6 1/2-9)
- ③ EXISTING HOT-MIX ASPHALT WIDENING
- ④ EXISTING CONCRETE GUTTER TY A
- ⑤ EXISTING CONCRETE GUTTER TY B
- ⑥ EXISTING HOT-MIX ASPHALT SHOULDER
- ⑦ EXISTING AGGREGATE SHOULDER TY B
- ⑧ PROPOSED HOT-MIX ASPHALT SURFACE REMOVAL (VARIABLE DEPTH)
- ⑨ PROPOSED LEVELING BINDER (MACHINE METHOD) 3/4"
- ⑩ PROPOSED HOT-MIX ASPHALT SURFACE COURSE, MIX "C", 1 1/2"
- ⑪ PROPOSED AGGREGATE SHOULDERS TY B
- *** ⑫ PROPOSED PAVEMENT MARKING, LINE (5')
- ⑬ PROPOSED HOT-MIX ASPHALT SHOULDER, 2 1/4"

*** NOTE: STRIPE LANES AT 12'

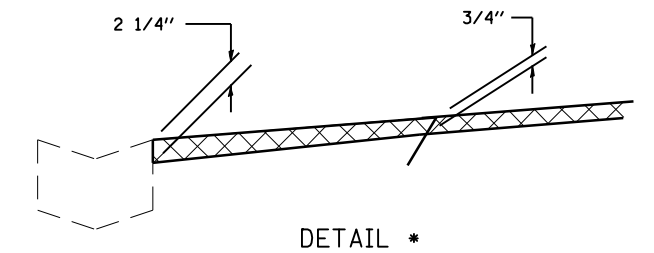


STA. 608+72.69 - 610+00.00 S.E. = 0.077'/'

FILE NAME =	USER NAME = laughlinr1	DESIGNED -	REVISED -	STATE OF ILLINOIS DEPARTMENT OF TRANSPORTATION	TYPICAL SECTIONS		F.A.P. RTE.	SECTION	COUNTY	TOTAL SHEETS	SHEET NO.	
		DRAWN -	REVISED -		SCALE:	SHEET NO. 10 OF 26 SHEETS	STA.	TO STA.	753	128XRS-3	MORGAN	26 10
		CHECKED -	REVISED -		CONTRACT NO. 72C66							
		DATE -	REVISED -		ILLINOIS FED. AID PROJECT							



STA. 587+73.47 - 602+50.63 S.E. = 0.077'/'
 STA. 602+50.63 - 603+00.00 S.E. TRANSITION

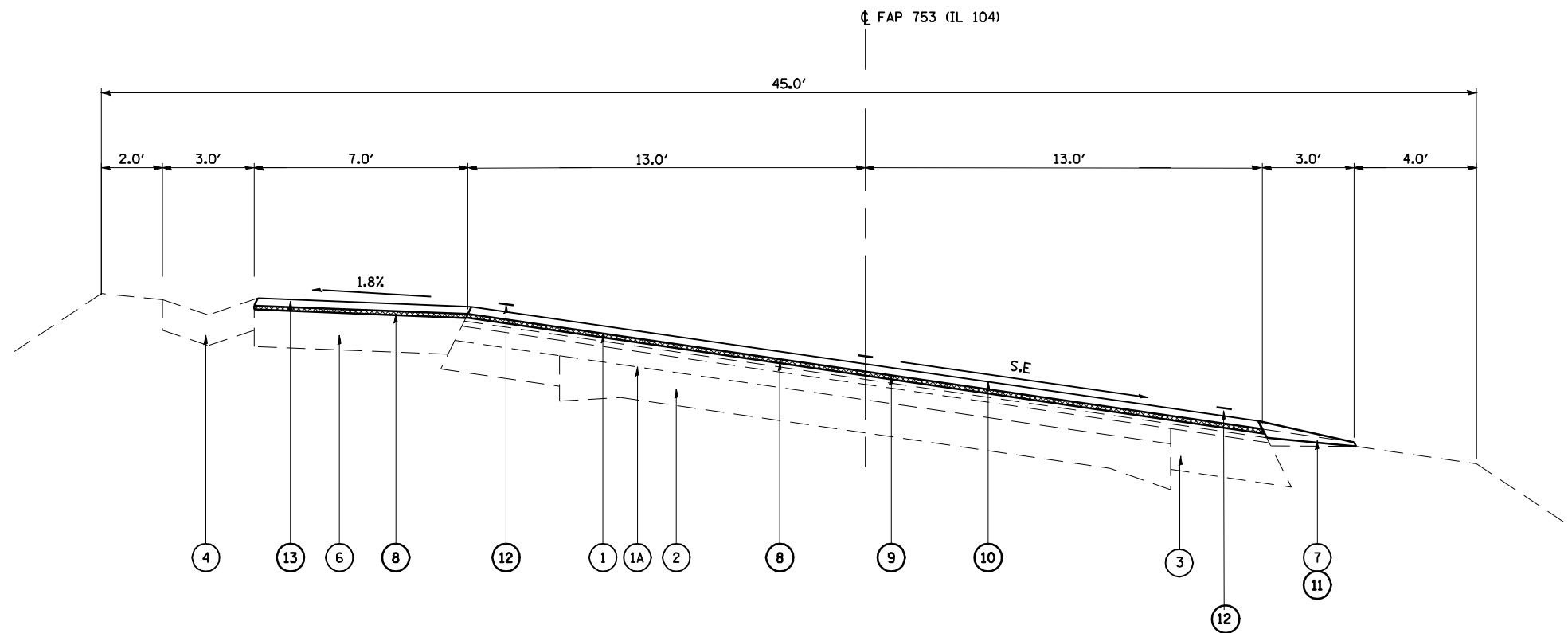


DETAIL *

LEGEND

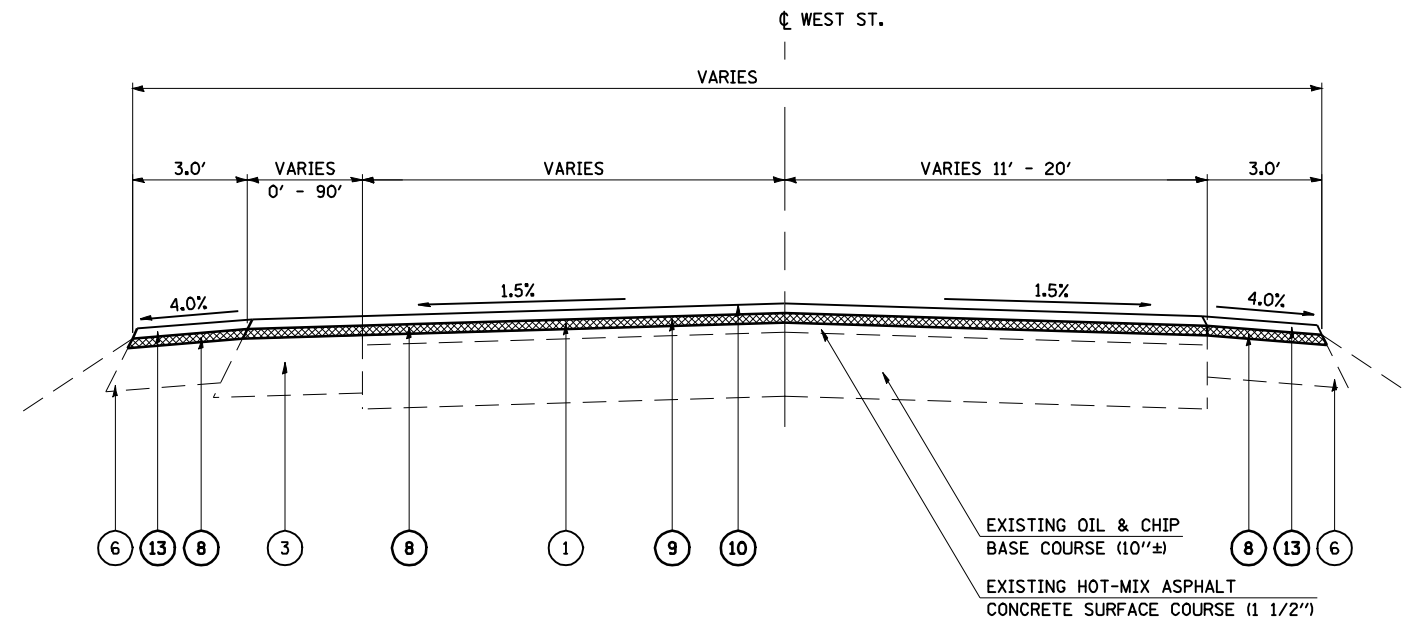
- ① EXISTING HOT-MIX ASPHALT CONCRETE SURFACE COURSE, MIX "D", CLASS I, TY 2 (1 1/2")
- ①A EXISTING HOT-MIX ASPHALT CONCRETE SURFACE (3±")
- ② EXISTING CONCRETE PAVEMENT (9-6 1/2-9)
- ③ EXISTING HOT-MIX ASPHALT WIDENING
- ④ EXISTING CONCRETE GUTTER TY A
- ⑤ EXISTING CONCRETE GUTTER TY B
- ⑥ EXISTING HOT-MIX ASPHALT SHOULDER
- ⑦ EXISTING AGGREGATE SHOULDER TY B
- ⑧ PROPOSED HOT-MIX ASPHALT SURFACE REMOVAL (VARIABLE DEPTH)
- ⑨ PROPOSED LEVELING BINDER (MACHINE METHOD) 3/4"
- ⑩ PROPOSED HOT-MIX ASPHALT SURFACE COURSE, MIX "C", 1 1/2"
- ⑪ PROPOSED AGGREGATE SHOULDERS TY B
- *** ⑫ PROPOSED PAVEMENT MARKING, LINE (5')
- ⑬ PROPOSED HOT-MIX ASPHALT SHOULDER, 2 1/4"

*** NOTE: STRIPE LANES AT 12'



STA. 576+00.00 - 576+69.89 S.E. = 0.077'/'
 STA. 576+69.89 - 578+99.87 S.E. TRANSITION
 STA. 610+00.00 - 612+00.00 S.E. = 0.077'/'

FILE NAME =	USER NAME = laughlinr1	DESIGNED -	REVISED -	STATE OF ILLINOIS DEPARTMENT OF TRANSPORTATION	TYPICAL SECTIONS			F.A.P. -	SECTION	COUNTY	TOTAL SHEETS	SHEET NO.
er\pwwork\pwwid\LAUGHLINRL\0120394\0672C66-ah-t-typico1.dgn		DRAWN -	REVISED -		753	128XRS-3	MORGAN	26	11			
PLOT SCALE = 10.0000 ' / IN.		CHECKED -	REVISED -		CONTRACT NO. 72C66							
PLOT DATE = Mar-29-2010 10:07:24AM		DATE -	REVISED -		SCALE:	SHEET NO. 11 OF 26 SHEETS	STA.	TO STA.	ILLINOIS FED. AID PROJECT			



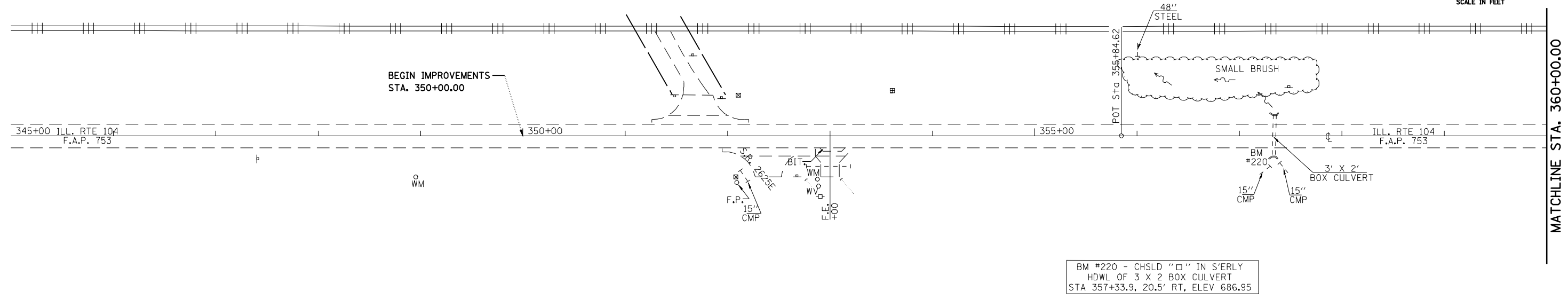
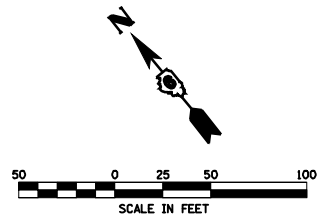
WEST STREET
 STA. 0+28.33 - 2+85.00

LEGEND

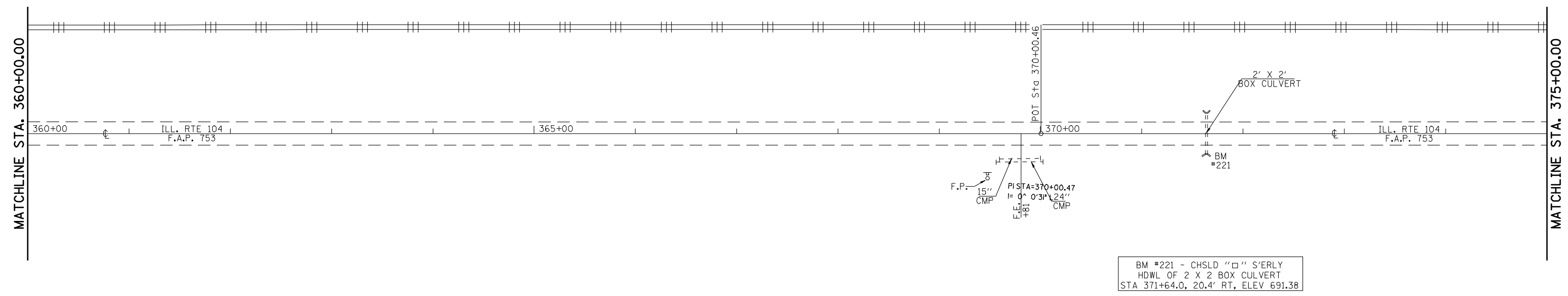
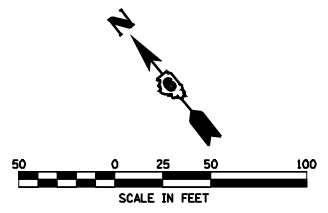
- ① EXISTING HOT-MIX ASPHALT CONCRETE SURFACE COURSE, MIX "D", CLASS I, TY 2 (1 1/2")
- ①A EXISTING HOT-MIX ASPHALT CONCRETE SURFACE (3±")
- ② EXISTING CONCRETE PAVEMENT (9-6 1/2-9)
- ③ EXISTING HOT-MIX ASPHALT WIDENING
- ④ EXISTING CONCRETE GUTTER TY A
- ⑤ EXISTING CONCRETE GUTTER TY B
- ⑥ EXISTING HOT-MIX ASPHALT SHOULDER
- ⑦ EXISTING AGGREGATE SHOULDER TY B
- ⑧ PROPOSED HOT-MIX ASPHALT SURFACE REMOVAL (VARIABLE DEPTH)
- ⑨ PROPOSED LEVELING BINDER (MACHINE METHOD) 3/4"
- ⑩ PROPOSED HOT-MIX ASPHALT SURFACE COURSE, MIX "C", 1 1/2"
- ⑪ PROPOSED AGGREGATE SHOULDERS TY B
- *** ⑫ PROPOSED PAVEMENT MARKING, LINE (5')
- ⑬ PROPOSED HOT-MIX ASPHALT SHOULDER, 2 1/4"

*** NOTE: STRIPE LANES AT 12'

FILE NAME =	USER NAME = laughlinr1	DESIGNED -	REVISED -	STATE OF ILLINOIS DEPARTMENT OF TRANSPORTATION	TYPICAL SECTIONS			F.A.P. RTE.	SECTION	COUNTY	TOTAL SHEETS	SHEET NO.		
	es:\pwork\PWIDOT\LAUGHLINRL\0120394\0672C66-ah-t-typico1.dgn	DRAWN -	REVISED -											
	PLOT SCALE = 10,0000 ' / IN.	CHECKED -	REVISED -			SCALE:	SHEET NO. 12 OF 26 SHEETS	STA.	TO STA.	753	128XRS-3	MORGAN	26	12
	PLOT DATE = Mar-29-2010 10:07:28AM	DATE -	REVISED -						CONTRACT NO. 72C66		ILLINOIS FED. AID PROJECT			



BM #220 - CHSLD "□" IN S'ERLY
 HDWL OF 3 X 2 BOX CULVERT
 STA 357+33.9, 20.5' RT, ELEV 686.95



BM #221 - CHSLD "□" S'ERLY
 HDWL OF 2 X 2 BOX CULVERT
 STA 371+64.0, 20.4' RT, ELEV 691.38

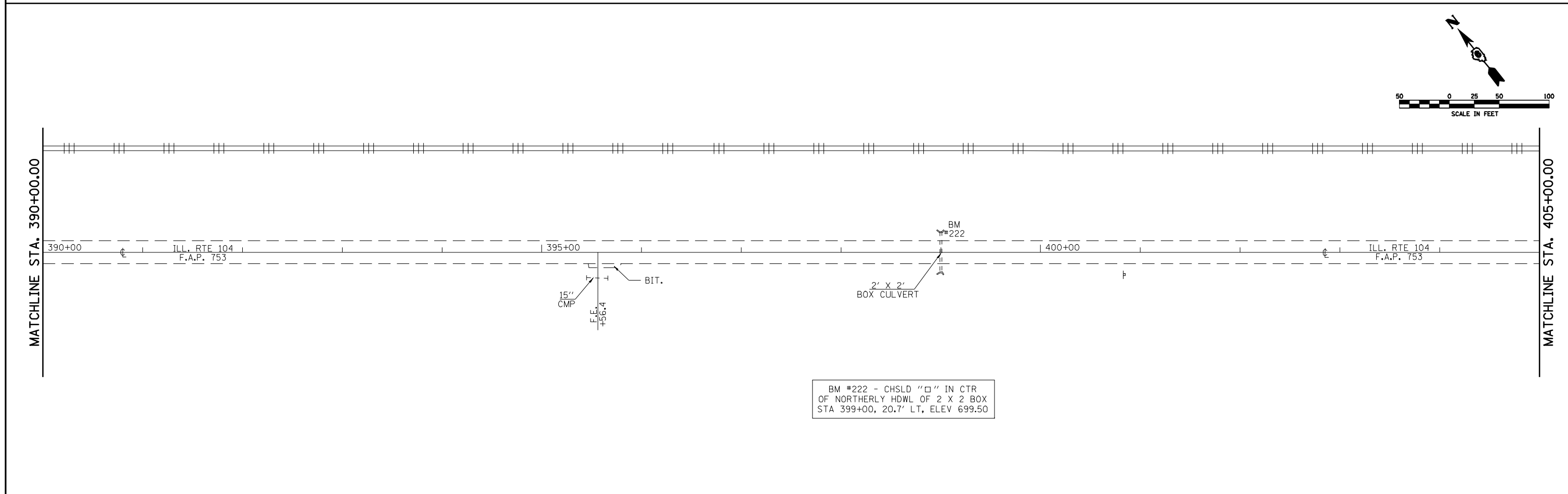
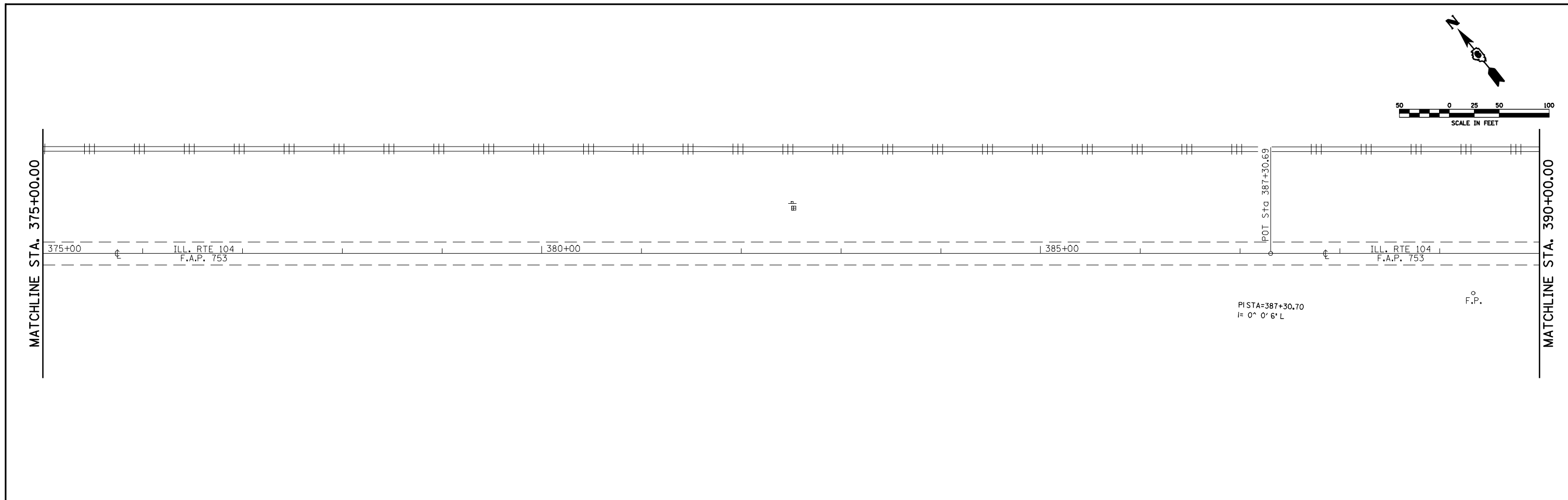
FILE NAME =	USER NAME = laughlinr1	DESIGNED -	REVISED -
es:\pwwork\pwwid\LAUGHLINRL\0120394\0672C66-SHT-plan1.dgn		DRAWN -	REVISED -
PLOT SCALE = 100.0000' / IN.		CHECKED -	REVISED -
PLOT DATE = Mar-29-2010 10:07:31AM		DATE -	REVISED -

**STATE OF ILLINOIS
 DEPARTMENT OF TRANSPORTATION**

PLAN SHEET - IL 104

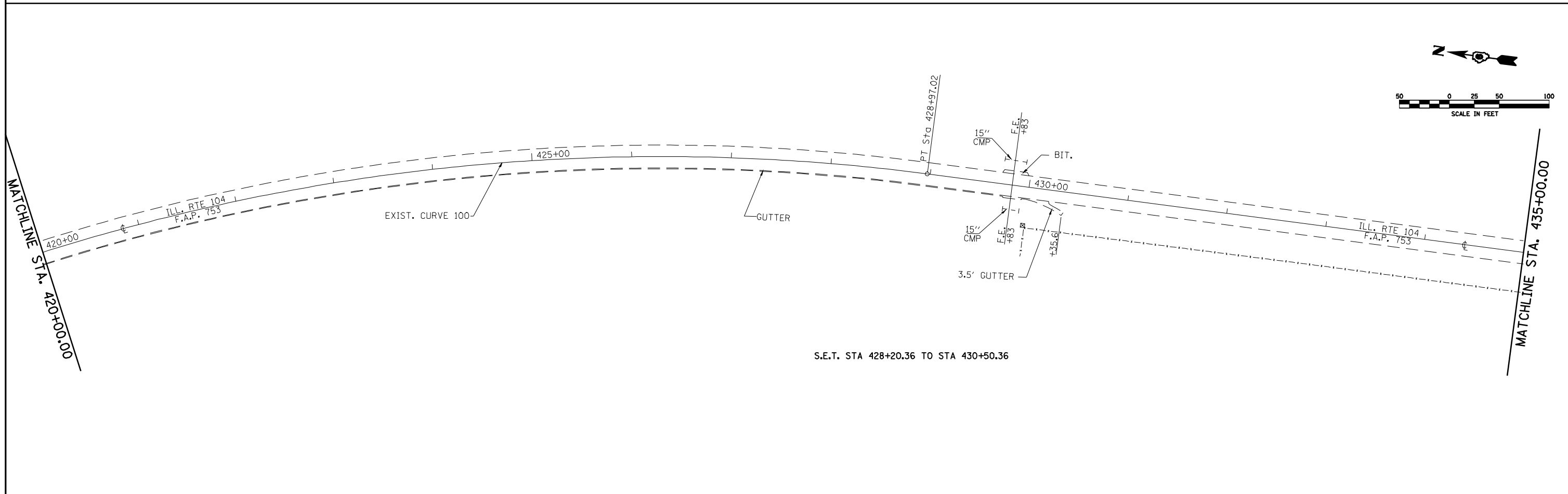
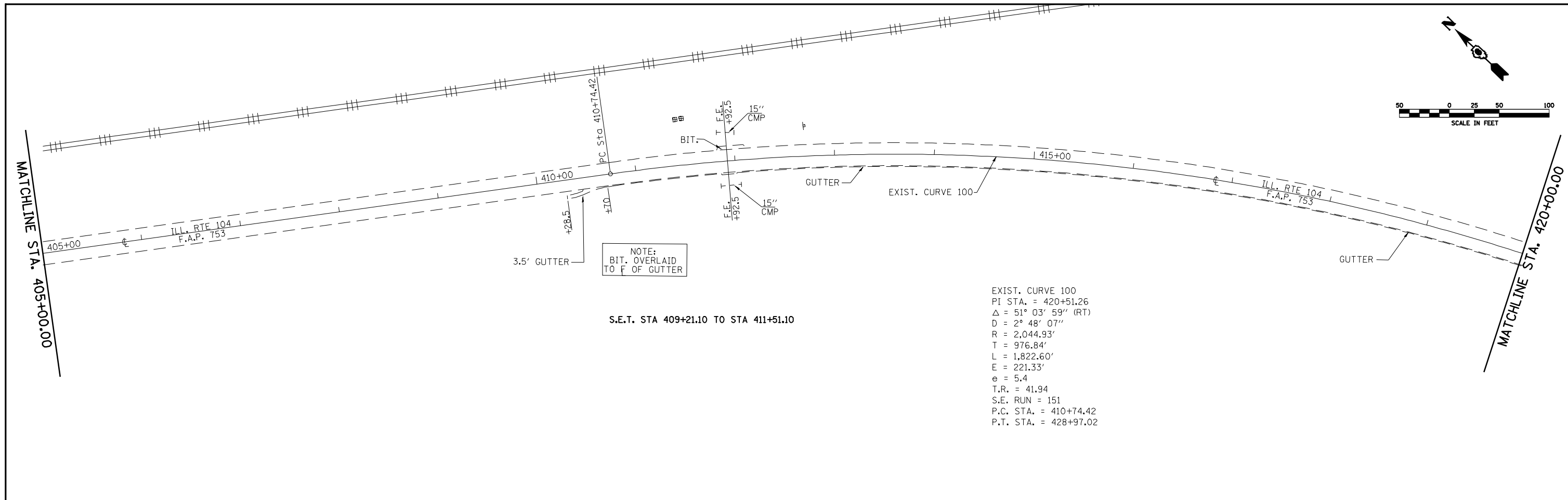
SCALE: SHEET NO. 13 OF 26 SHEETS STA. TO STA.

F.A.P. RTE.	SECTION	COUNTY	TOTAL SHEETS	SHEET NO.
753	(128)RS-3	MORGAN	26	13
CONTRACT NO. 72C66			ILLINOIS FED. AID PROJECT	



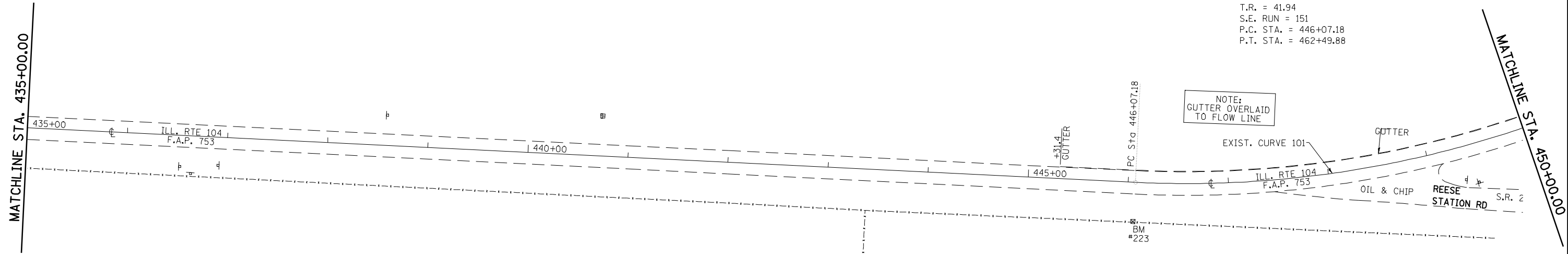
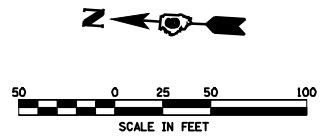
BM #222 - CHSLD "□" IN CTR OF NORTHERLY HDWL OF 2 X 2 BOX STA 399+00, 20.7' LT, ELEV 699.50

FILE NAME =	USER NAME = laughlinr1	DESIGNED -	REVISED -	STATE OF ILLINOIS DEPARTMENT OF TRANSPORTATION	PLAN SHEET - IL 104		F.A.P. -	SECTION	COUNTY	TOTAL SHEETS	SHEET NO.
es:\pwwork\pwwid\LAUGHLINRL\0120394\0672C66-SHT-plan1.dgn	DRAWN -	REVISED -	753				(128)RS-3	MORGAN	26	14	
PLOT SCALE = 100.0000' / IN.	CHECKED -	REVISED -	CONTRACT NO. 72C66								
PLOT DATE = Mar-29-2010 10:07:35AM	DATE -	REVISED -	SCALE:		SHEET NO. 14 OF 26 SHEETS	STA.	TO STA.	ILLINOIS FED. AID PROJECT			

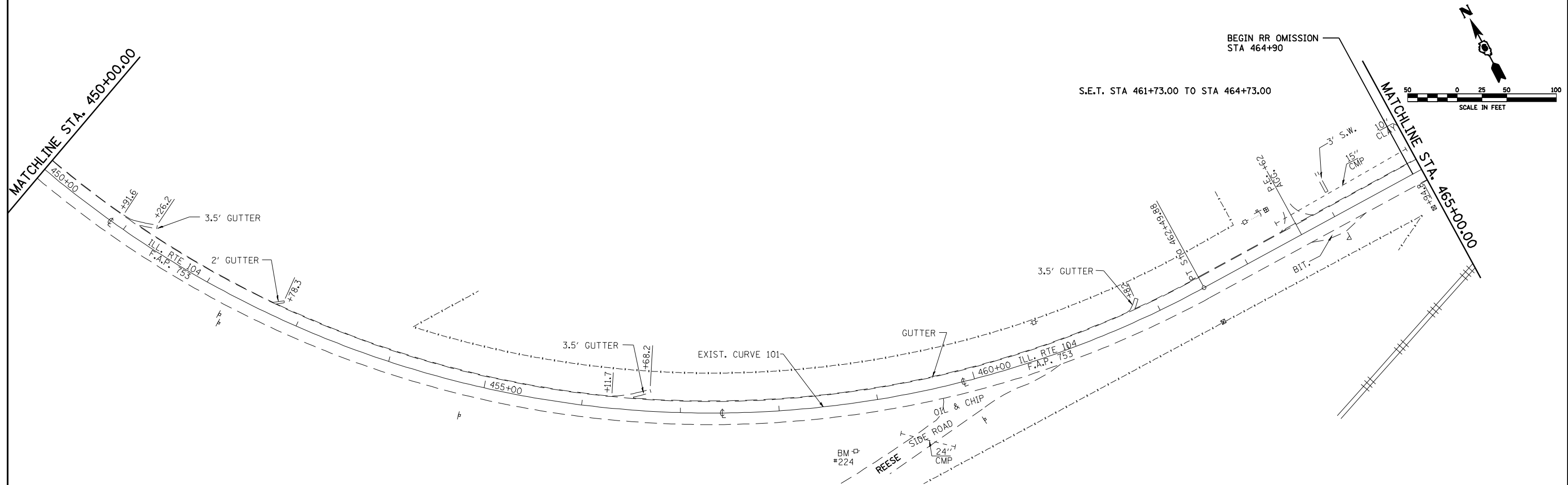


FILE NAME =	USER NAME = laughlinr1	DESIGNED -	REVISED -	STATE OF ILLINOIS DEPARTMENT OF TRANSPORTATION	PLAN SHEET - IL 104			F.A.P. RTE.	SECTION	COUNTY	TOTAL SHEETS	SHEET NO.
e:\pwwork\pwwid\LAUGHLINRL\0120394\0672C86-SHT-plan1.dgn		DRAWN -	REVISED -		753	(128)RS-3	MORGAN	26	15			
PLOT SCALE = 100.0000' / IN.		CHECKED -	REVISED -		CONTRACT NO. 72C66			ILLINOIS FED. AID PROJECT				
PLOT DATE = Mar-29-2010 10:07:38AM		DATE -	REVISED -		SCALE:	SHEET NO. 15 OF 26 SHEETS	STA.	TO STA.				

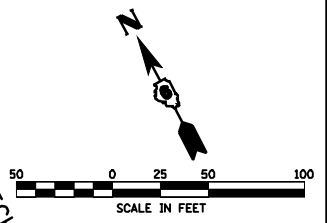
EXIST. CURVE 101
 PI STA. = 456+55.39
 $\Delta = 90^\circ 21' 55''$ (LT)
 $D = 5^\circ 30' 04''$
 $R = 1,041.55'$
 $T = 1,048.21'$
 $L = 1,642.70'$
 $E = 436.14'$
 $e = 5.4$
 $T.R. = 41.94$
 $S.E. RUN = 151$
 $P.C. STA. = 446+07.18$
 $P.T. STA. = 462+49.88$



BM #223 - TOP OF R.O.W. MARKER
 STA 446+06.6, 39.2' LT, ELEV 699.21
 S.E.T. STA 444+00.00 TO STA 446+30.00



S.E.T. STA 461+73.00 TO STA 464+73.00



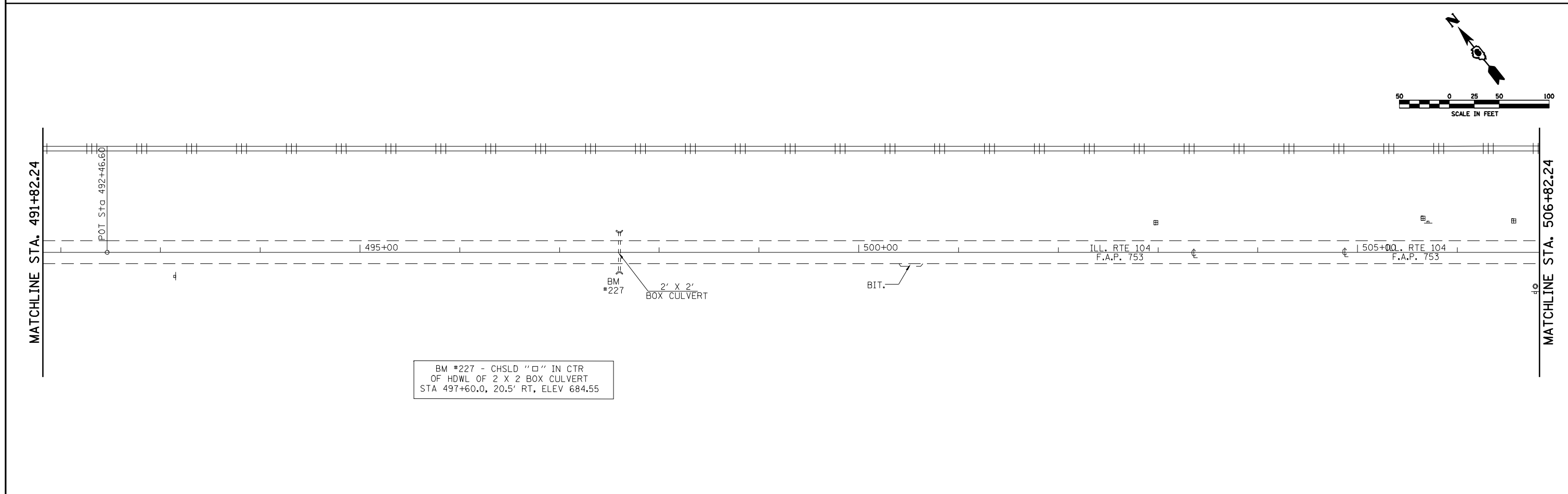
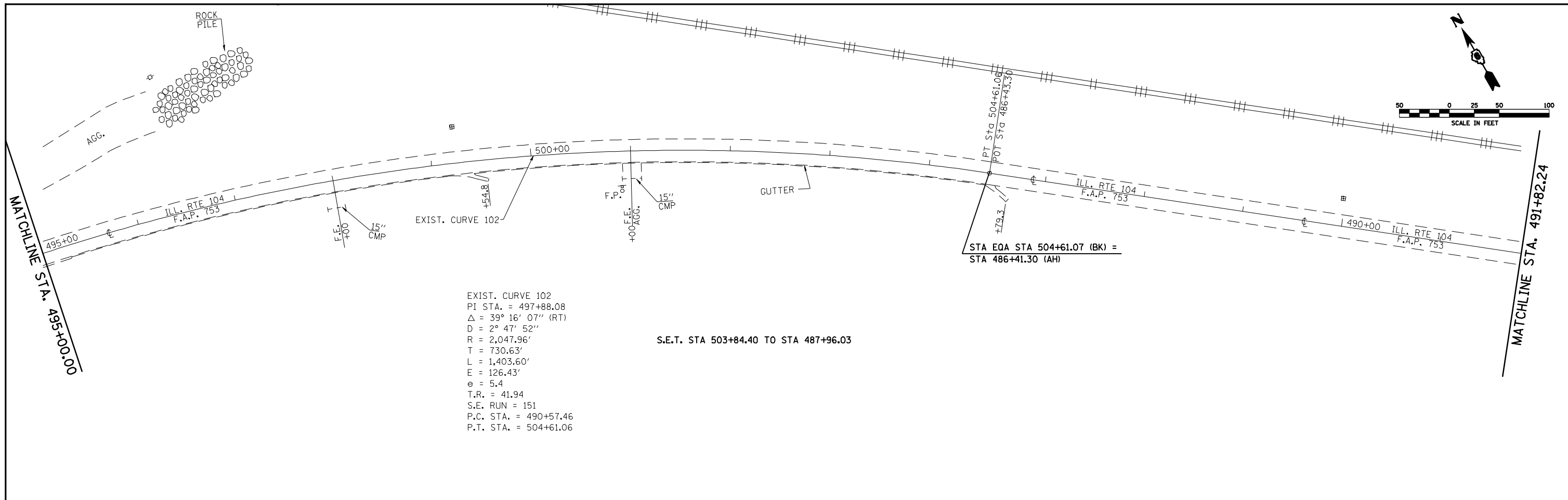
FILE NAME =	USER NAME = laughlinr1	DESIGNED -	REVISED -
er:\pwork\PWIDOT\LAUGHLINRL\0120394\0672C66-SHT-plan1.dgn		DRAWN -	REVISED -
PLOT SCALE = 100.0000' / IN.		CHECKED -	REVISED -
PLOT DATE = Mar-29-2010 10:07:42AM		DATE -	REVISED -

**STATE OF ILLINOIS
 DEPARTMENT OF TRANSPORTATION**

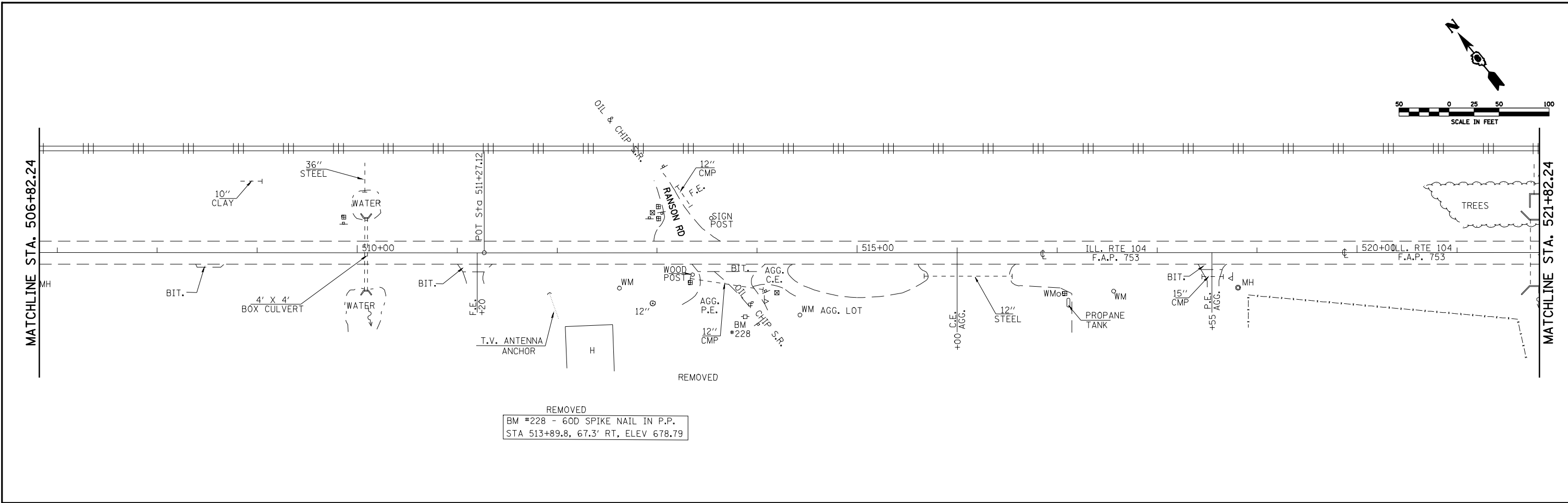
PLAN SHEET - IL 104

SCALE: SHEET NO. 16 OF 26 SHEETS STA. TO STA.

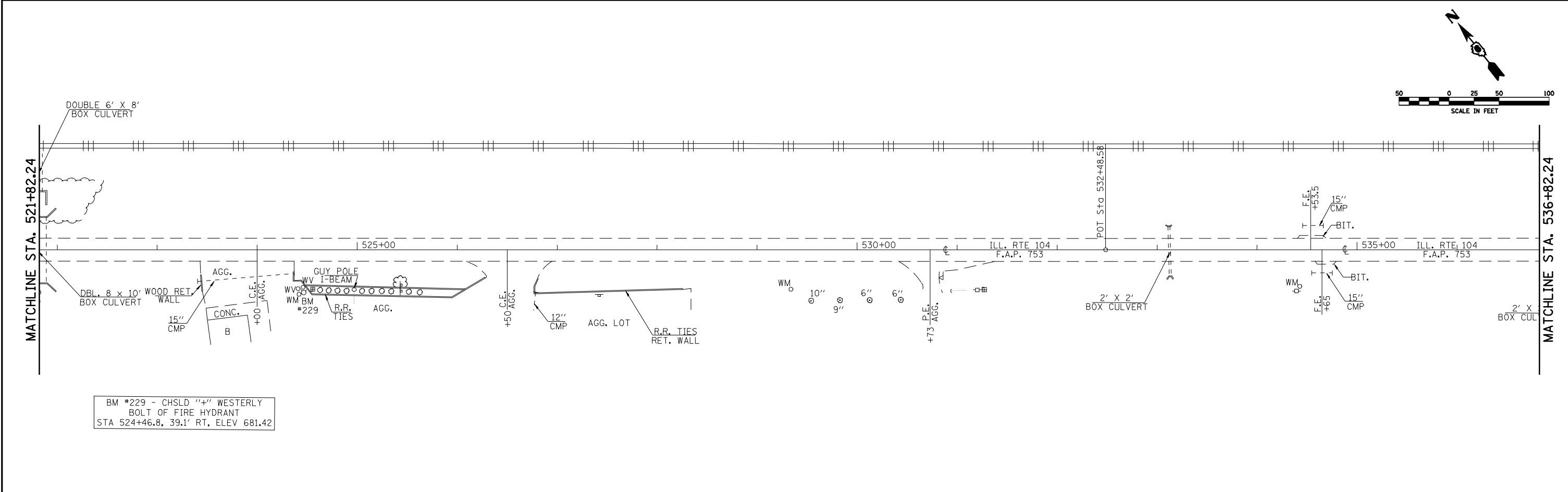
F.A.P. RTE.	SECTION	COUNTY	TOTAL SHEETS	SHEET NO.
753	(128)RS-3	MORGAN	26	16
CONTRACT NO. 72C66				
ILLINOIS FED. AID PROJECT				



FILE NAME =	USER NAME = laughlinr1	DESIGNED -	REVISED -	STATE OF ILLINOIS DEPARTMENT OF TRANSPORTATION	PLAN SHEET - IL 104		F.A.P. -	SECTION	COUNTY	TOTAL SHEETS	SHEET NO.	
es:\pwwork\pwwid\LAUGHLINRL\0120394\0672C66-SHT-plan1.dgn	DRAWN -	REVISED -	753				(128)RS-3	MORGAN	26	18		
PLOT SCALE = 100.0000' / IN.	CHECKED -	REVISED -	CONTRACT NO. 72C66									
PLOT DATE = Mar-29-2010 10:07:49AM	DATE -	REVISED -	ILLINOIS FED. AID PROJECT									
					SCALE:	SHEET NO. 18 OF 26 SHEETS	STA.	TO STA.				

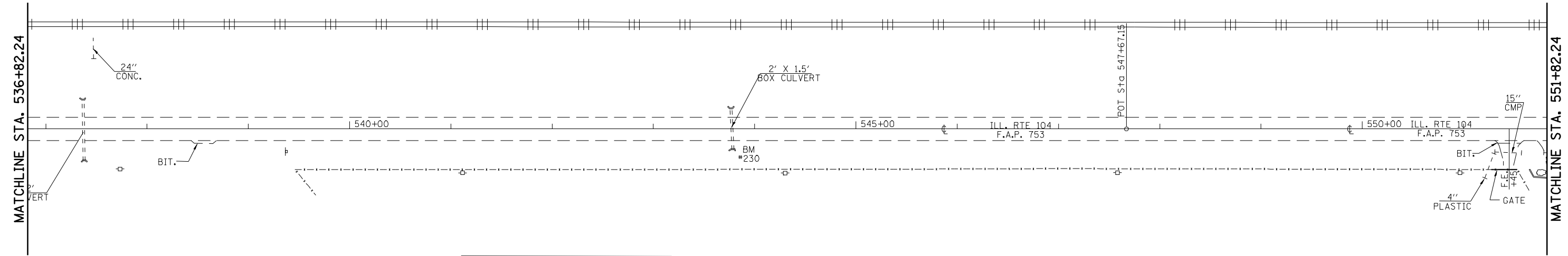
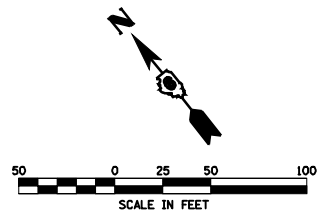


REMOVED
 BM #228 - 60D SPIKE NAIL IN P.P.
 STA 513+89.8, 67.3' RT, ELEV 678.79

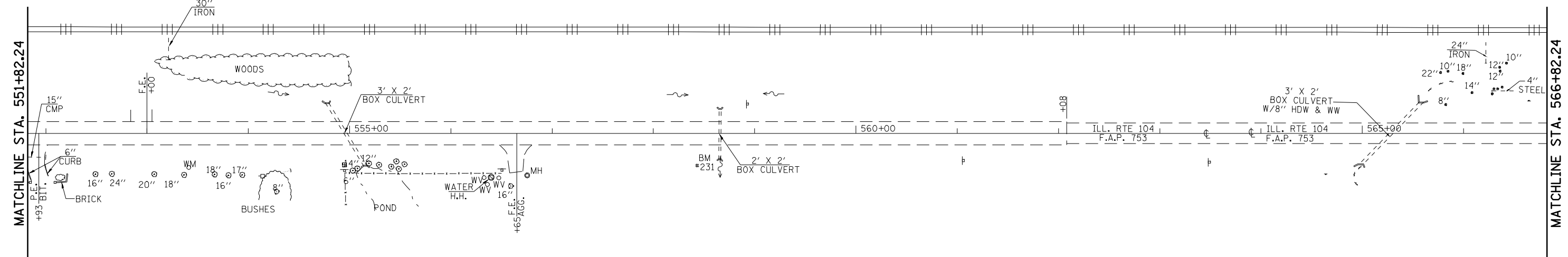
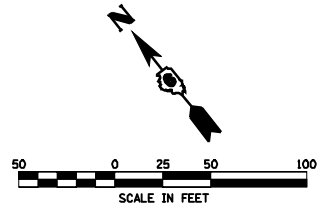


BM #229 - CHSLD "+\" WESTERLY
 BOLT OF FIRE HYDRANT
 STA 524+46.8, 39.1' RT, ELEV 681.42

FILE NAME =	USER NAME = laughlinr1	DESIGNED -	REVISED -	STATE OF ILLINOIS DEPARTMENT OF TRANSPORTATION	PLAN SHEET - IL 104		F.A.P. RTE.	SECTION	COUNTY	TOTAL SHEETS	SHEET NO.
es:\pwwork\pwwid\LAUGHLINRL\0120394\0672C86-SHT-plan1.dgn	DRAWN -	REVISED -	753				(128)RS-3	MORGAN	26	19	
PLOT SCALE = 100.0000' / IN.	CHECKED -	REVISED -	CONTRACT NO. 72C66								
PLOT DATE = Mar-29-2010 10:07:53AM	DATE -	REVISED -	ILLINOIS FED. AID PROJECT								
					SCALE:	SHEET NO. 19 OF 26 SHEETS	STA.	TO STA.			



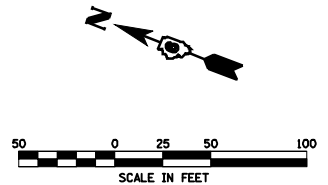
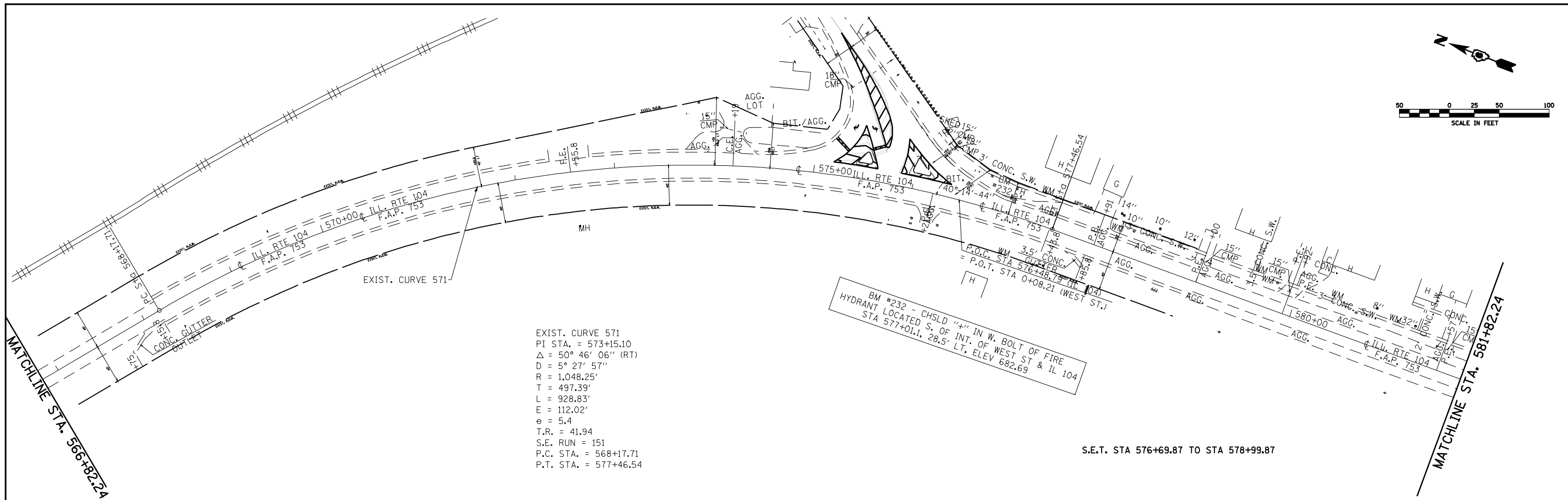
BM #230 - CHSLD "□" IN CTR. OF SOUTHERLY HDWL OF 2 X 1.5 BOX STA 543+77.3, 20.7' RT, ELEV 685.20



BM #231 - CHSLD "□" IN CTR OF SOUTHERLY HDWL OF 2 X 2 BOX STA 558+66.9, 25.4' RT, ELEV 680.97

S.E.T. STA 566+64.38 TO STA 568+94.38

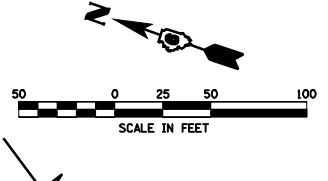
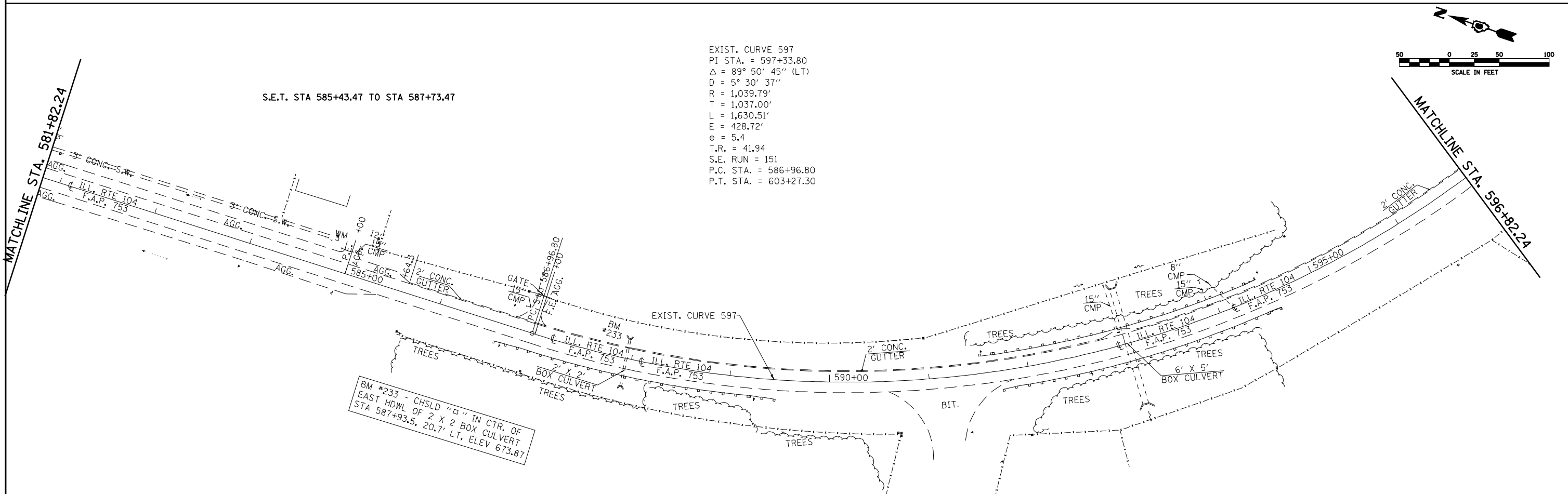
FILE NAME =	USER NAME = laughlinr1	DESIGNED -	REVISED -	STATE OF ILLINOIS DEPARTMENT OF TRANSPORTATION	PLAN SHEET - IL 104			F.A.P. RTE.	SECTION	COUNTY	TOTAL SHEETS	SHEET NO.
e:\pwwork\pwwid01\LAUGHLINRL\0120394\0672C86-SHT-plan1.dgn		DRAWN -	REVISED -		753	(128)RS-3	MORGAN	26	20			
PLOT SCALE = 100.0000' / IN.		CHECKED -	REVISED -		CONTRACT NO. 72C66							
PLOT DATE = Mar-29-2010 10:07:56AM		DATE -	REVISED -		ILLINOIS FED. AID PROJECT							
				SCALE:	SHEET NO. 20 OF 26 SHEETS	STA.	TO STA.					



EXIST. CURVE 571
 PI STA. = 573+15.10
 $\Delta = 50^\circ 46' 06''$ (RT)
 $D = 5^\circ 27' 57''$
 $R = 1,048.25'$
 $T = 497.39'$
 $L = 928.83'$
 $E = 112.02'$
 $e = 5.4$
 $T.R. = 41.94$
 $S.E. RUN = 151$
 $P.C. STA. = 568+17.71$
 $P.T. STA. = 577+46.54$

BM #232 - CHSLD "4" IN W. BOLT OF FIRE
 HYDRANT LOCATED S. OF INT. OF WEST ST & IL 104
 STA 577+01.1, 28.5' LT, ELEV 682.69

S.E.T. STA 576+69.87 TO STA 578+99.87



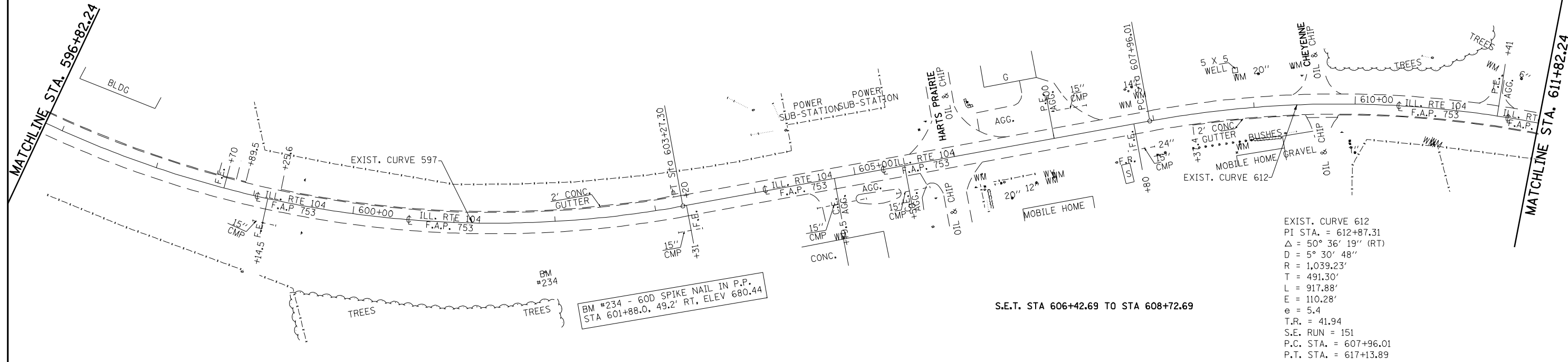
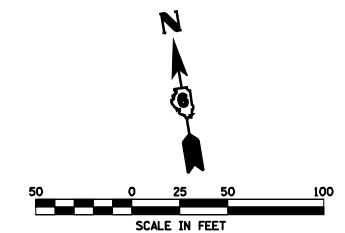
EXIST. CURVE 597
 PI STA. = 597+33.80
 $\Delta = 89^\circ 50' 45''$ (LT)
 $D = 5^\circ 30' 37''$
 $R = 1,039.79'$
 $T = 1,037.00'$
 $L = 1,630.51'$
 $E = 428.72'$
 $e = 5.4$
 $T.R. = 41.94$
 $S.E. RUN = 151$
 $P.C. STA. = 586+96.80$
 $P.T. STA. = 603+27.30$

BM #233 - CHSLD "4" IN CTR. OF
 EAST HDWL OF 2 X 2 BOX CULVERT
 STA 587+93.5, 20.7' LT, ELEV 673.87

S.E.T. STA 585+43.47 TO STA 587+73.47

FILE NAME =	USER NAME = laughlinr1	DESIGNED -	REVISED -	STATE OF ILLINOIS DEPARTMENT OF TRANSPORTATION	PLAN SHEET - IL 104		F.A.P. -	SECTION	COUNTY	TOTAL SHEETS	SHEET NO.		
e:\pwwork\pwwdot\LAUGHLINRL\0120394\0672066-SHT-plan1.dgn		DRAWN -	REVISED -		SCALE:	SHEET NO. 21 OF 26 SHEETS	STA.	TO STA.	753	(128)RS-3	MORGAN	26	21
PLOT SCALE = 100.0000' / IN.		CHECKED -	REVISED -		CONTRACT NO. 72C66								
PLOT DATE = Mar-29-2010 10:07:59AM		DATE -	REVISED -		ILLINOIS FED. AID PROJECT								

S.E.T. STA 602+50.63 TO STA 604+80.63

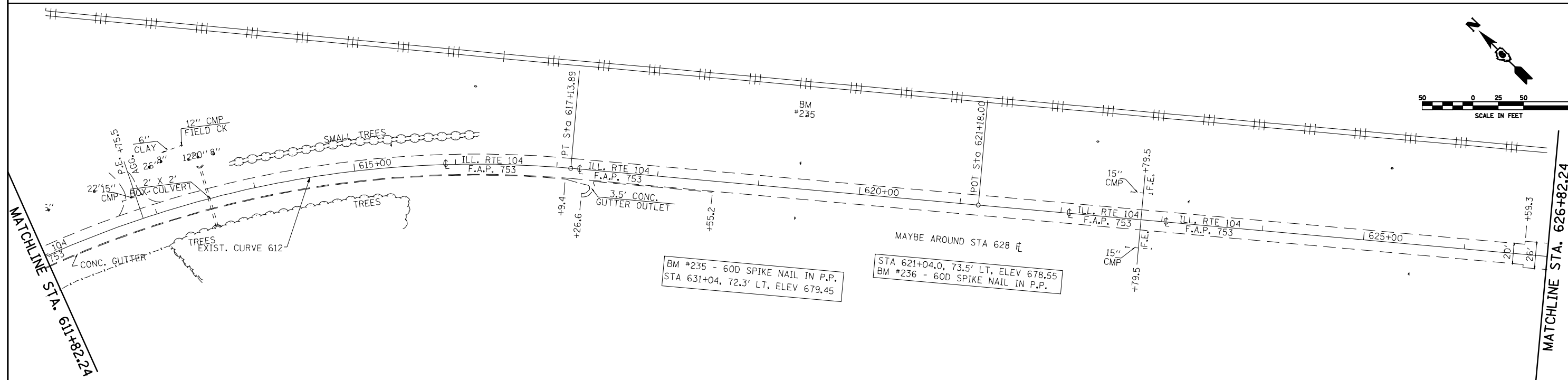
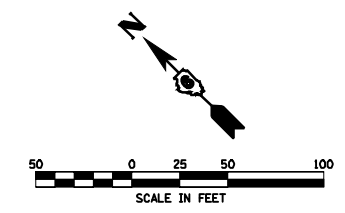


BM #234 - 60D SPIKE NAIL IN P.P.
STA 601+88.0, 49.2' RT, ELEV 680.44

S.E.T. STA 606+42.69 TO STA 608+72.69

EXIST. CURVE 612
PI STA. = 612+87.31
 $\Delta = 50^\circ 36' 19''$ (RT)
D = $5^\circ 30' 48''$
R = 1,039.23'
T = 491.30'
L = 917.88'
E = 110.28'
e = 5.4
T.R. = 41.94
S.E. RUN = 151
P.C. STA. = 607+96.01
P.T. STA. = 617+13.89

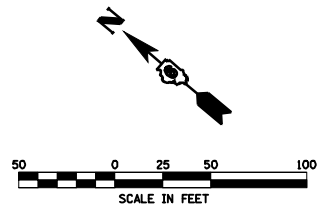
S.E.T. STA 616+37.23 TO STA 618+67.23



BM #235 - 60D SPIKE NAIL IN P.P.
STA 631+04, 72.3' LT, ELEV 679.45

MAYBE AROUND STA 628 #
STA 621+04.0, 73.5' LT, ELEV 678.55
BM #236 - 60D SPIKE NAIL IN P.P.

FILE NAME =	USER NAME = laughlinr1	DESIGNED -	REVISED -	STATE OF ILLINOIS DEPARTMENT OF TRANSPORTATION	PLAN SHEET - IL 104			F.A.P. -	SECTION	COUNTY	TOTAL SHEETS	SHEET NO.
er\pwork\PWIDOT\LAUGHLINRL\0120394\0672C66-SHT-plan1.dgn		DRAWN -	REVISED -		753	(128)RS-3	MORGAN	26	22			
PLOT SCALE = 100.0000' / IN.		CHECKED -	REVISED -		CONTRACT NO. 72C66							
PLOT DATE = Mar-29-2010 10:08:04AM		DATE -	REVISED -		ILLINOIS FED. AID PROJECT							
				SCALE:	SHEET NO. 22 OF 26 SHEETS	STA.	TO STA.					

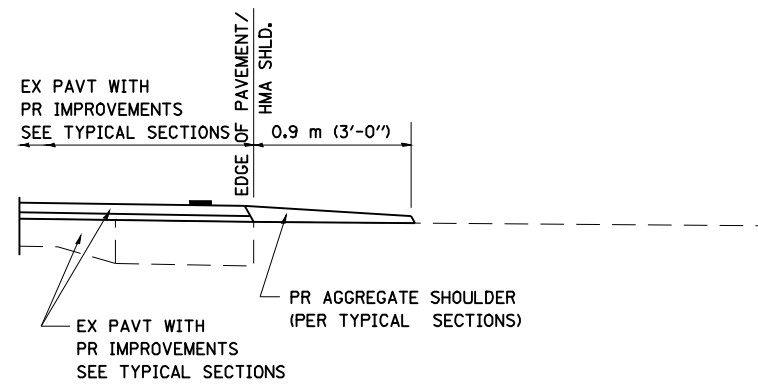


FILE NAME =	USER NAME = laughlinr1	DESIGNED -	REVISED -
e:\pwork\work\PWIDOT\LAUGHLINRL\0120394\0672C66-SHT-plan1.dgn		DRAWN -	REVISED -
	PLOT SCALE = 100.0000' / IN.	CHECKED -	REVISED -
	PLOT DATE = Mar-29-2010 10:08:09AM	DATE -	REVISED -

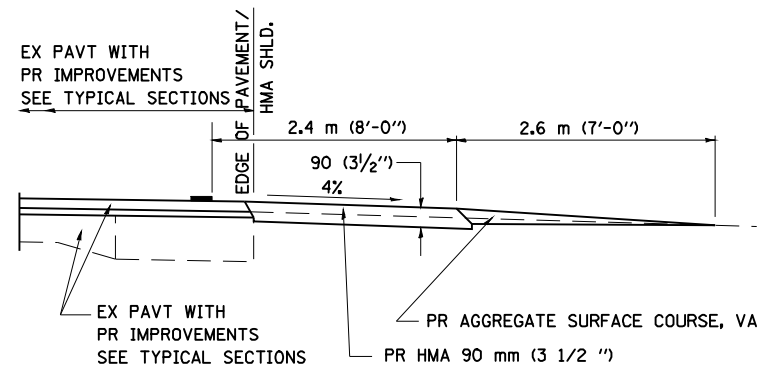
**STATE OF ILLINOIS
DEPARTMENT OF TRANSPORTATION**

PLAN SHEET - IL 104			
SCALE:	SHEET NO. 23 OF 26 SHEETS	STA.	TO STA.

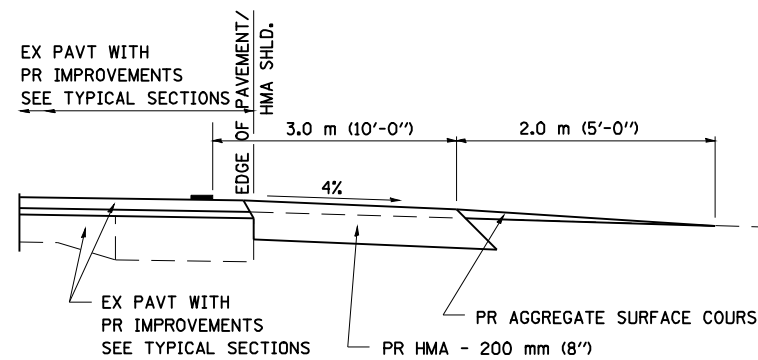
F.A.P. RTE.	SECTION	COUNTY	TOTAL SHEETS	SHEET NO.
753	(128)RS-3	MORGAN	26	23
CONTRACT NO. 72C66			ILLINOIS FED. AID PROJECT	



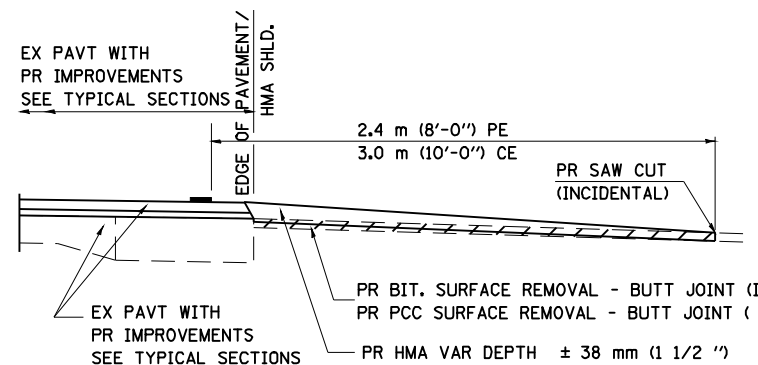
SECTION A-A FOR EX EARTH/ AGGREGATE FE



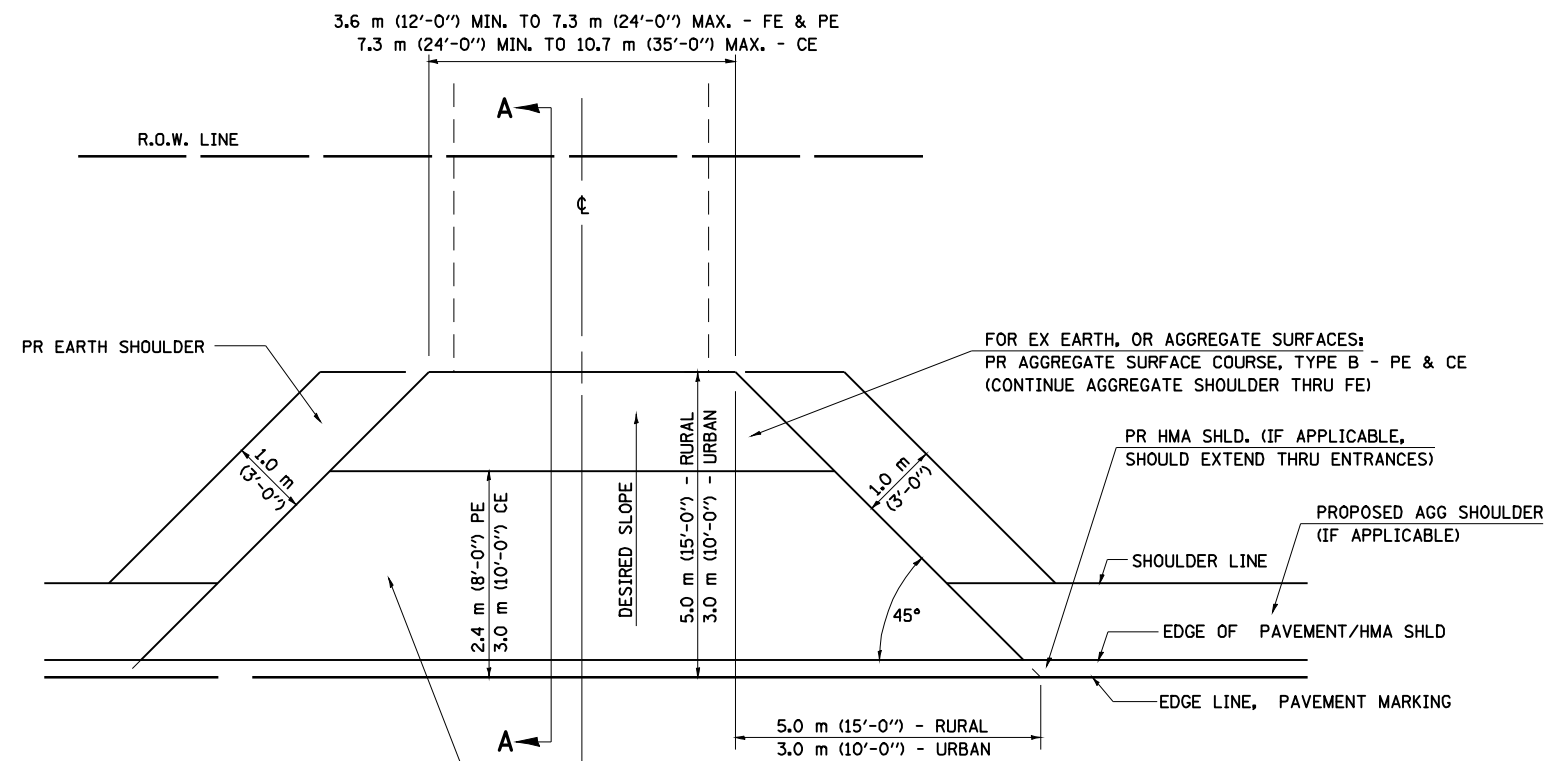
SECTION A-A FOR EX EARTH/AGGREGATE PE



SECTION A-A FOR EX EARTH/AGGREGATE CE & SIDE ROAD



SECTION A-A FOR EX BITUMINOUS/ PC CONCRETE PE, CE & SIDE ROAD



FOR EX EARTH OR AGGREGATE SURFACES:
 PR BIT SURFACE REMOVAL (IF APPLICABLE)
 PR AGGREGATE SHOULDER THRU - FE
 PR BITUMINOUS CONCRETE 90 mm (3 1/2") - PE
 PR BITUMINOUS CONCRETE 200mm (8") - CE

FOR EX BITUMINOUS CONCRETE SURFACES:
 PR BITUMINOUS SURFACE REMOVAL-BUTT JOINT

FOR EX PCC SURFACES:
 PR PCC SURFACE REMOVAL-BUTT JOINT

GENERAL NOTES:

THE RESIDENT ENGINEER WILL DETERMINE THE EXACT TYPE OF IMPROVEMENT TO BE COMPLETED FOR ALL ENTRANCES, SIDEROADS AND MAILBOX TURNOUTS ON THIS PROJECT.

THE PLAN DETAILS AND SCHEDULES SHOULD BE USED AS A GUIDE FOR THE ENGINEER TO IMPLEMENT THE FINAL DESIGN. THE ENGINEER MAY DECIDE TO SALVAGE PORTIONS OF THE EXISTING ENTRANCE PAVEMENT STRUCTURE; THEREFORE, REDUCING PAY ITEM QUANTITIES. NO ADDITIONAL PAYMENT WILL BE ALLOWED FOR THIS REDUCTION IN QUANTITIES.

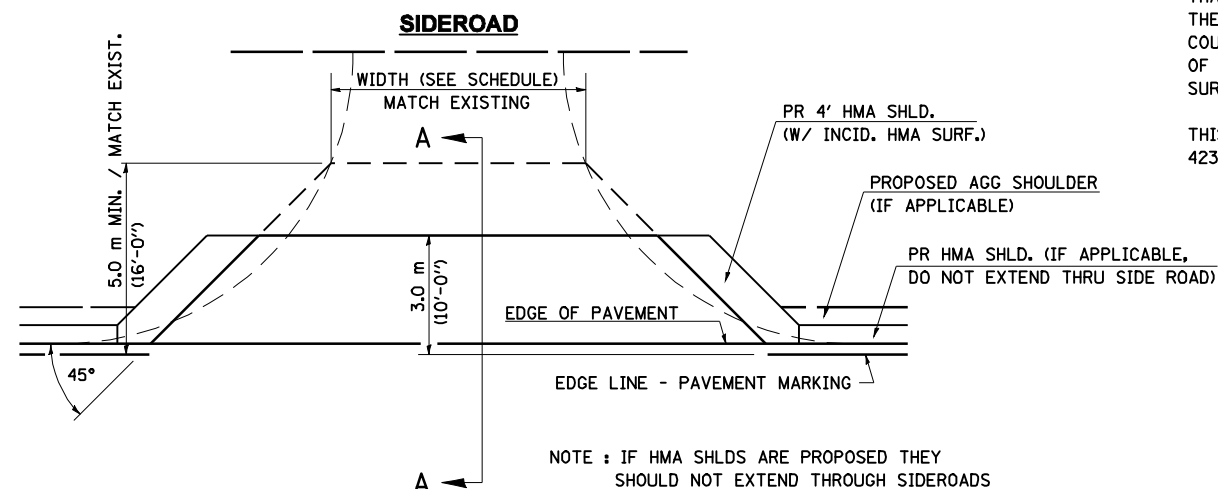
ANY WORK THE ENGINEER REQUIRES WHICH IS NOT COVERED BY A PAY ITEM CONTAINED IN THE PLANS WILL BE PAID FOR IN ACCORDANCE WITH ARTICLE 109.04 OF THE STANDARD SPECIFICATIONS.

BITUMINOUS CONCRETE REQUIRED TO CONSTRUCT THE ENTRANCES SHALL BE IN ACCORDANCE WITH THE APPLICABLE PORTIONS OF SECTION 406 AND 408 OF THE STANDARD SPECIFICATIONS AND AS DIRECTED BY THE ENGINEER.

WHEN THE BITUMINOUS CONCRETE PROPOSED FOR THE IMPROVEMENT IS THICKER THAN 75 mm (3 INCHES) AND REQUIRE PLACEMENT IN MORE THAN ONE LIFT. THE BOTTOM LIFT(S) SHALL MEET THE REQUIREMENTS OF BITUMINOUS BASE COURSE IN SECTION 406 OF THE STANDARD SPECIFICATIONS AND THE TOP LIFT OF 50 mm (2 INCHES) SHALL MEET THE REQUIREMENTS OF BITUMINOUS CONCRETE SURFACE COURSE, SUPERPAVE.

THIS WORK WILL BE PAID FOR IN ACCORDANCE WITH SECTIONS 351, 358, 408, 423 AND 440 OF THE STANDARD SPECIFICATIONS.

ALL DIMENSIONS ARE IN MILLIMETERS (INCHES) UNLESS OTHERWISE SHOWN.



NOTE : IF HMA SHLDS ARE PROPOSED THEY SHOULD NOT EXTEND THROUGH SIDEROADS

FILE NAME =	USER NAME = laughlinr1	DESIGNED -	REVISED - 2/19/03 JCN
e:\pwwork\pwwid01\LAUGHLINRL\0120394\0672066-sht-ent.ppp.dgn		DRAWN - CADD	REVISED - 4/01/04 JCN
ENT PPP.DGN	PLOT SCALE = 48.000 ' / IN.	CHECKED - JCN	REVISED -
	PLOT DATE = Mar-29-2010 10:08:10AM	DATE - FEBRUARY 23, 1999	REVISED -

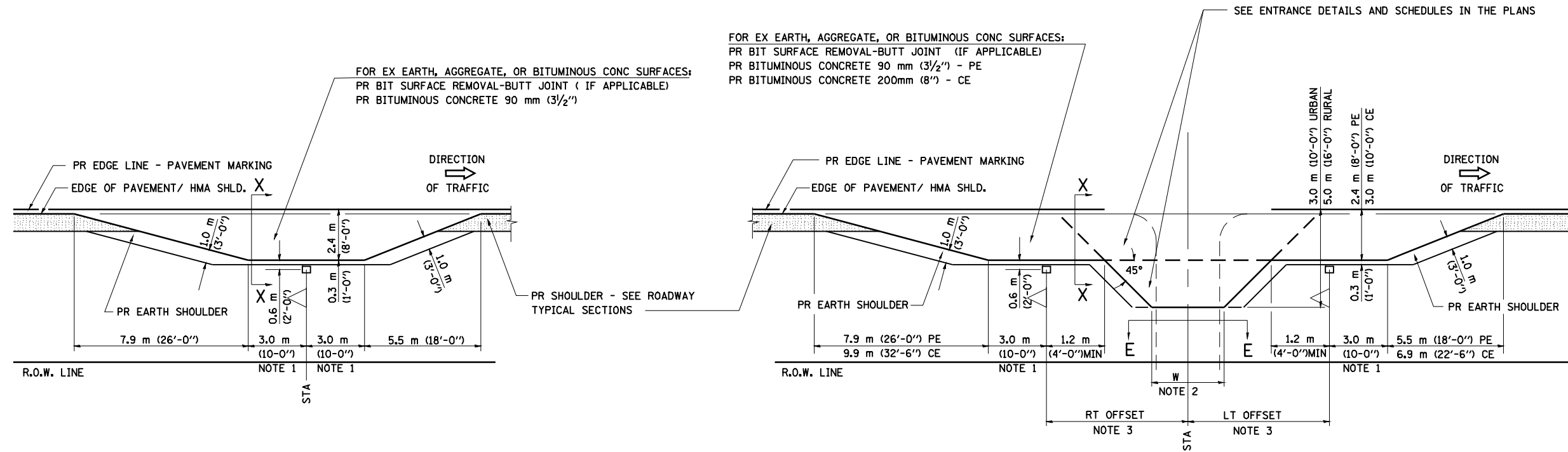
**STATE OF ILLINOIS
 DEPARTMENT OF TRANSPORTATION**

**DIST. 6 DETAILS FOR RURAL/URBAN ENT., MAILBOX
 TURNOUT & SIDEROADS W/O CONC. GUTTER (3P-PROJ.)**

SCALE: SHEET NO. 24 OF 26 SHEETS STA. TO STA.

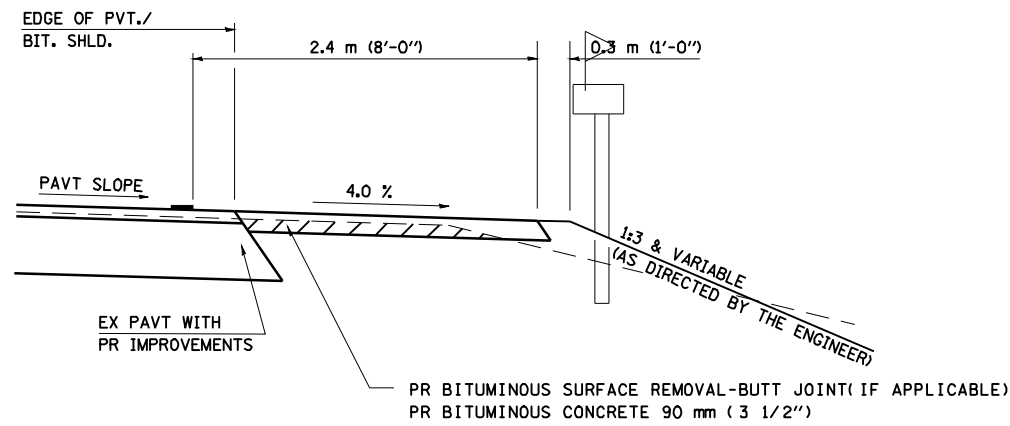
F.A.P. RTE.	SECTION	COUNTY	TOTAL SHEETS	SHEET NO.
753	(128)RS-3	MORGAN	26	24
FED. ROAD DIST. NO. ILLINOIS FED. AID PROJECT			CONTRACT NO. 72C66	

DETAILS OF MAILBOX TURNOUTS



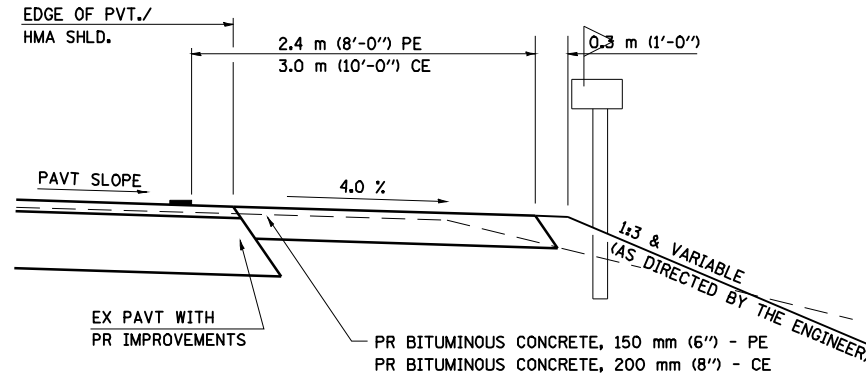
PLAN - MAILBOX TURNOUTS

PLAN - COMBINED MAILBOX TURNOUT WITH TRAILING OR LEADING ENTRANCE



**SECTION X-X THRU MAILBOX TURNOUT
ALSO APPLIES TO MAILBOX TURNOUTS COMBINED WITH
EX EARTH, AGGREGATE, OR BITUMINOUS PE & FE**

(DETAIL APPLIES WHEN M.B. TURNOUT DOES NOT EXIST.
IF EXISTING, TREAT SAME AS ENTRANCE.)



**SECTION X-X THRU MAILBOX TURNOUT
COMBINED WITH EX BITUMINOUS CONC & PC CONC PE & CE**

(DETAIL APPLIES WHEN M.B. TURNOUT DOES NOT EXIST.
IF EXISTING, TREAT SAME AS ENTRANCE.)

- NOTE 1 IF MORE THAN ONE MAILBOX IS PRESENT, DIMENSION FROM CENTER OF END MAILBOX.

NOTE 2 FOR ENTRANCE LAYOUT DIMENSIONS AND SECTIONS A-A & E-E REFER TO THE SCHEDULES IN THE PLANS.

NOTE 3 BOTH LT OR RT OFFSETS FOR MAILBOX SHOWN USE OFFSET DIMENSION PER SCHEDULE AND REFER TO LAYOUT SHOWN ON THE PLAN.

ALL DIMENSIONS ARE IN MILLIMETERS (INCHES)
UNLESS OTHERWISE SHOWN.

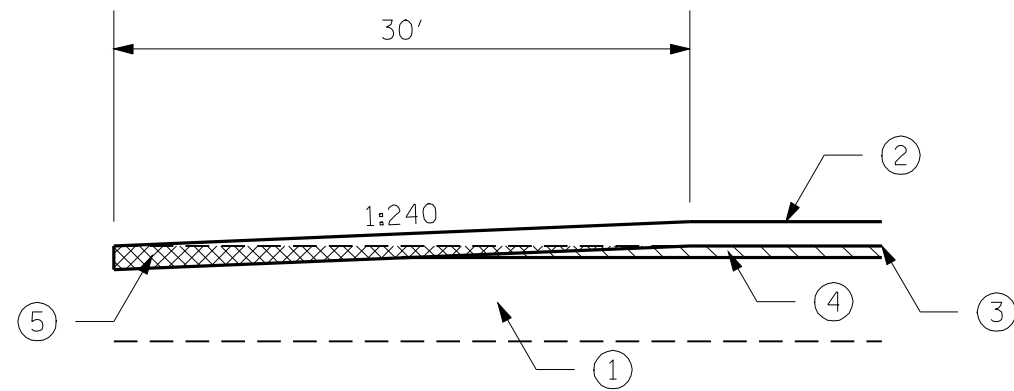
FILE NAME =	USER NAME = laughlinr1	DESIGNED -	REVISED - 2/19/03 JCN
ENT PPP.DGN	es:\pwwork\pwwid\LAUGHLINRL\0120394\0672C66-ent-ent.ppp.dgn	DRAWN - CADD	REVISED - 4/01/04 JCN
	PLOT SCALE = 48.000' / IN.	CHECKED - JCN	REVISED -
	PLOT DATE = Mar-29-2010 10:08:14AM	DATE - FEBRUARY 23, 1999	REVISED -

**STATE OF ILLINOIS
DEPARTMENT OF TRANSPORTATION**

**DIST. 6 DETAILS FOR RURAL/URBAN ENT., MAILBOX
TURNOUT & SIDEROADS W/O CONC. GUTTER (3P-PROJ.)**

SCALE: SHEET NO. 25 OF 26 SHEETS STA. TO STA.

F.A.P. RTE.	SECTION	COUNTY	TOTAL SHEETS	SHEET NO.
753	(128X)RS-3	MORGAN	26	25
CONTRACT NO. 72C66				
FED. ROAD DIST. NO. ILLINOIS FED. AID PROJECT				



BUTT JOINT DETAIL

- ① EXIST. HMA RESURFACING
- ② PROP. HMA SURFACE COURSE, MIX "C" (1 1/2")
- ③ PROP. LEVELING BINDER (MACHINE METHOD), (3/4")
- ④ PROP. HMA SURFACE REMOVAL, VARIABLE DEPTH OR 2 1/4"
- ⑤ PROP. HMA SURFACE REMOVAL - BUTT JOINT

FILE NAME =	USER NAME = laughlinr1	DESIGNED -	REVISED -	STATE OF ILLINOIS DEPARTMENT OF TRANSPORTATION	BUTT JOINT DETAIL			F.A.P. RTE.	SECTION	COUNTY	TOTAL SHEETS	SHEET NO.
ea:\pwork\work\PWIDOT\LAUGHLINRL\0120394\0672C66-sht-butt-joint-detail.dgn		DRAWN -	REVISED -		753	(128)RS-3	72C66	26	26			
PLOT SCALE = 10,000' / IN.		CHECKED -	REVISED -		SCALE: SHEET NO. 26 OF 26 SHEETS STA. TO STA.			CONTRACT NO. 72C66				
PLOT DATE = Mar-29-2010 10:08:16AM		DATE -	REVISED -		FED. ROAD DIST. NO. ILLINOIS FED. AID PROJECT							