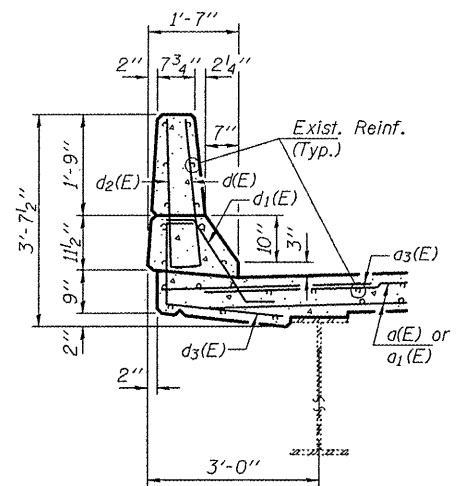
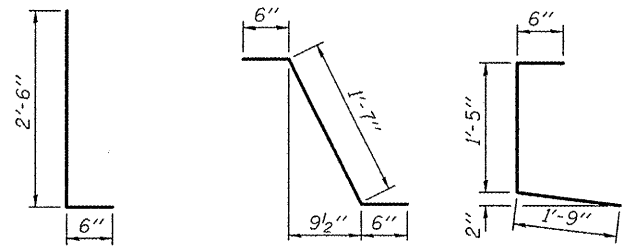


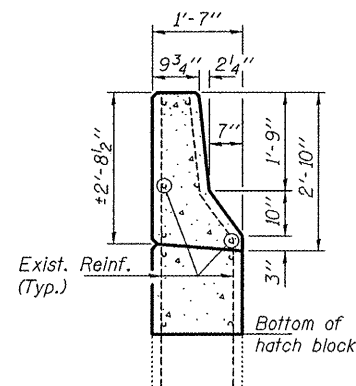
STATE OF ILLINOIS
DEPARTMENT OF TRANSPORTATION



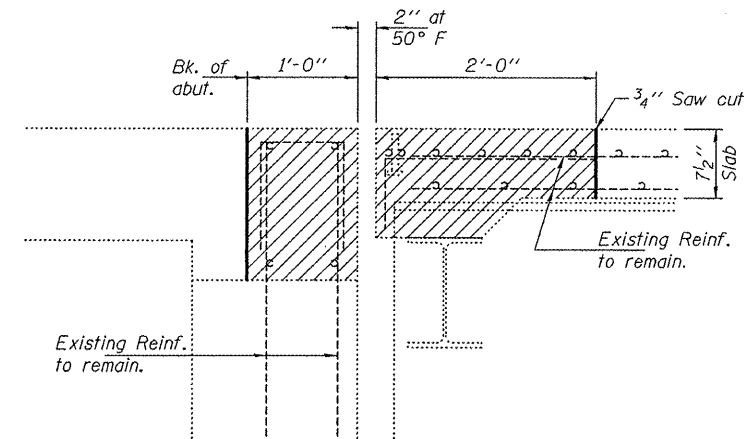
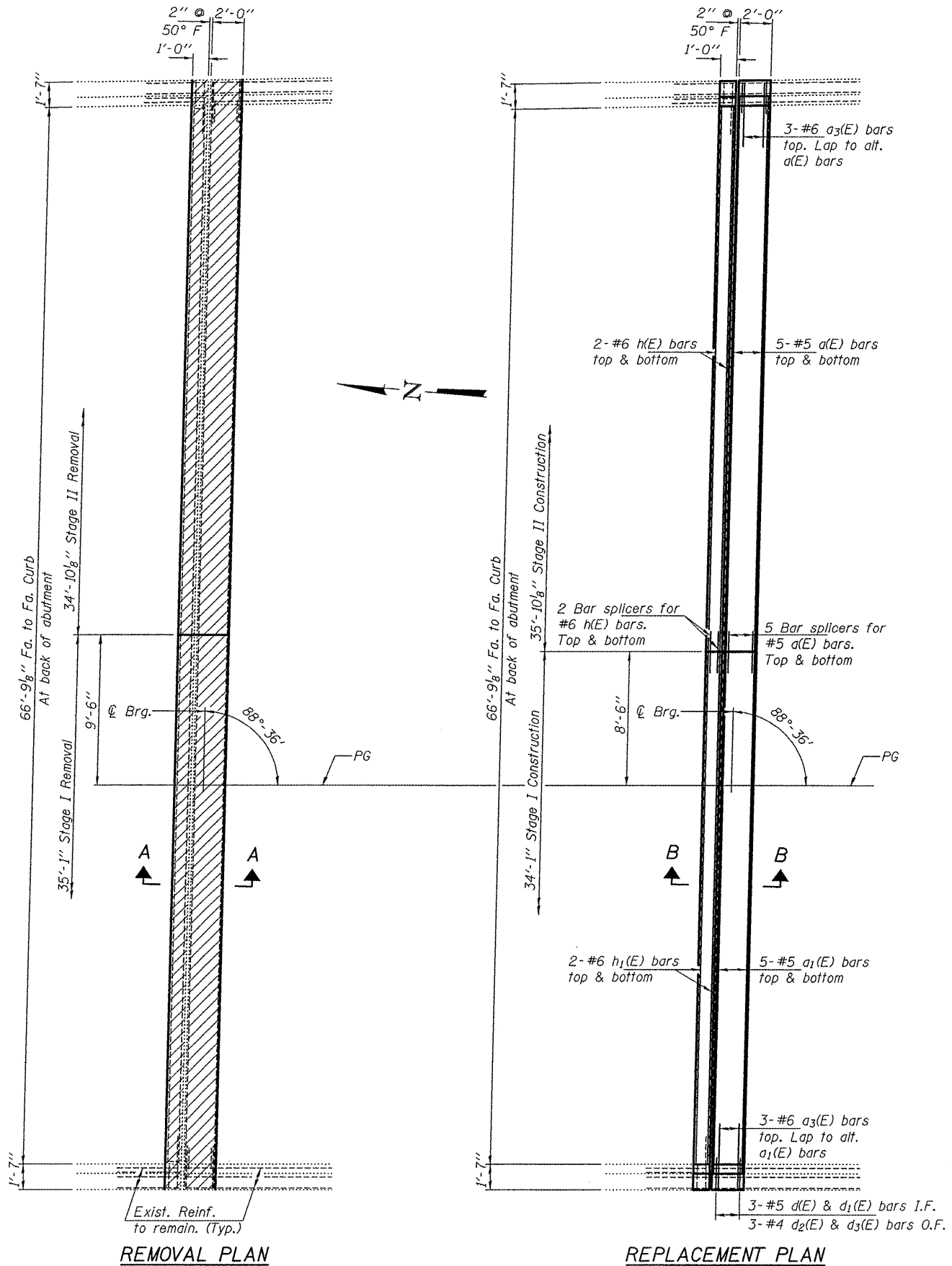
TYPICAL PARAPET SECTION



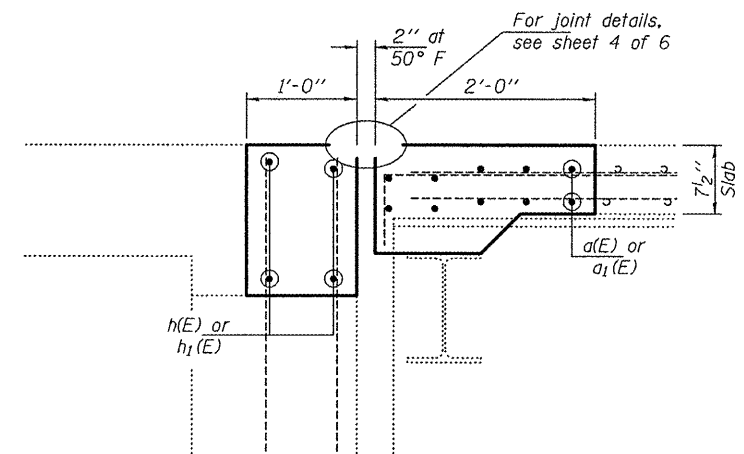
BARS d(E) & d₂(E) BAR d₁(E) BAR d₃(E)



SECTION THRU APPROACH PARAPET



SECTION A-A
(Near ∅ Roadway)
(Dimensions are at RT L's to end of deck)



SECTION B-B
(Near ∅ Roadway)
(Dimensions are at RT L's to end of deck)

BILL OF MATERIAL

Bar	No.	Size	Length	Shape
a(E)	20	#5	34'-10"	—
a ₁ (E)	20	#5	33'-1"	—
a ₃ (E)	12	#6	4'-0"	—
d(E)	12	#5	3'-0"	L
d ₁ (E)	12	#5	2'-7"	L
d ₂ (E)	12	#4	3'-0"	L
d ₃ (E)	12	#4	3'-8"	L
h(E)	8	#6	35'-6"	—
h ₁ (E)	8	#6	33'-9"	—
Concrete Removal			Cu. Yd.	20.5
Concrete Superstructure			Cu. Yd.	20.5
Reinforcement Bars, Epoxy Coated			Lbs.	2440

JOINT REPLACEMENT DETAILS
FAI 55 OVER SANGAMON AVE.
SN 084-0014 & 0015

Notes:
Hatched areas indicate removal.

DESIGNED	IJL
CHECKED	VHV
DRAWN	ballva
CHECKED	IJL VHV

MAY 7, 2010
EXAMINED *Carl Hoyer*
ENGINEER OF STRUCTURAL SERVICES
PASSED *Ralph E. Anderson*
ENGINEER OF BRIDGES AND STRUCTURES

SN 084-0015, North Abutment.
SN 084-0014, South Abutment similar by rotation

SHEET NO. 2 6 SHEETS	F.A.I. RTE.	SECTION	COUNTY	TOTAL SHEETS	SHEET NO.
	55	84 2(RS-3)	SANGAMON	156	114
FED. ROAD DIST. NO.			ILLINOIS FED. AID PROJECT		
CONTRACT NO. 72D43					

Rev. 5-26-10