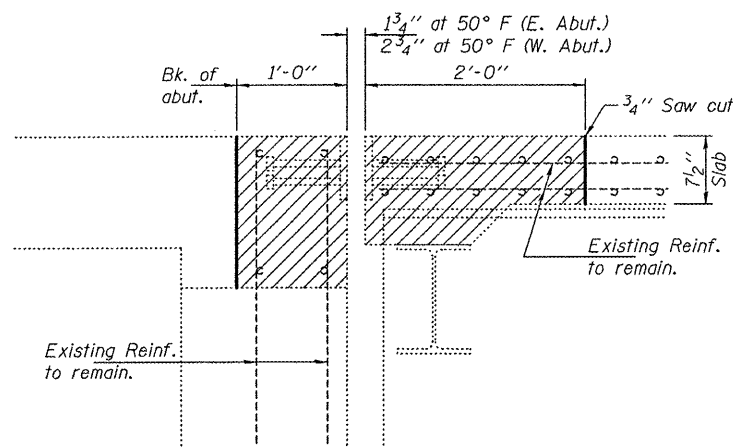
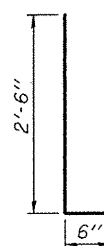


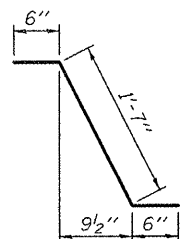
STATE OF ILLINOIS
DEPARTMENT OF TRANSPORTATION



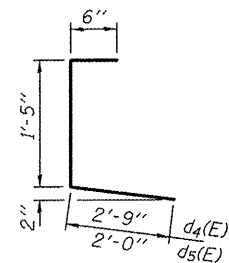
SECTION A-A
(Near Roadway)
(Dimensions are at RT L's to end of deck)



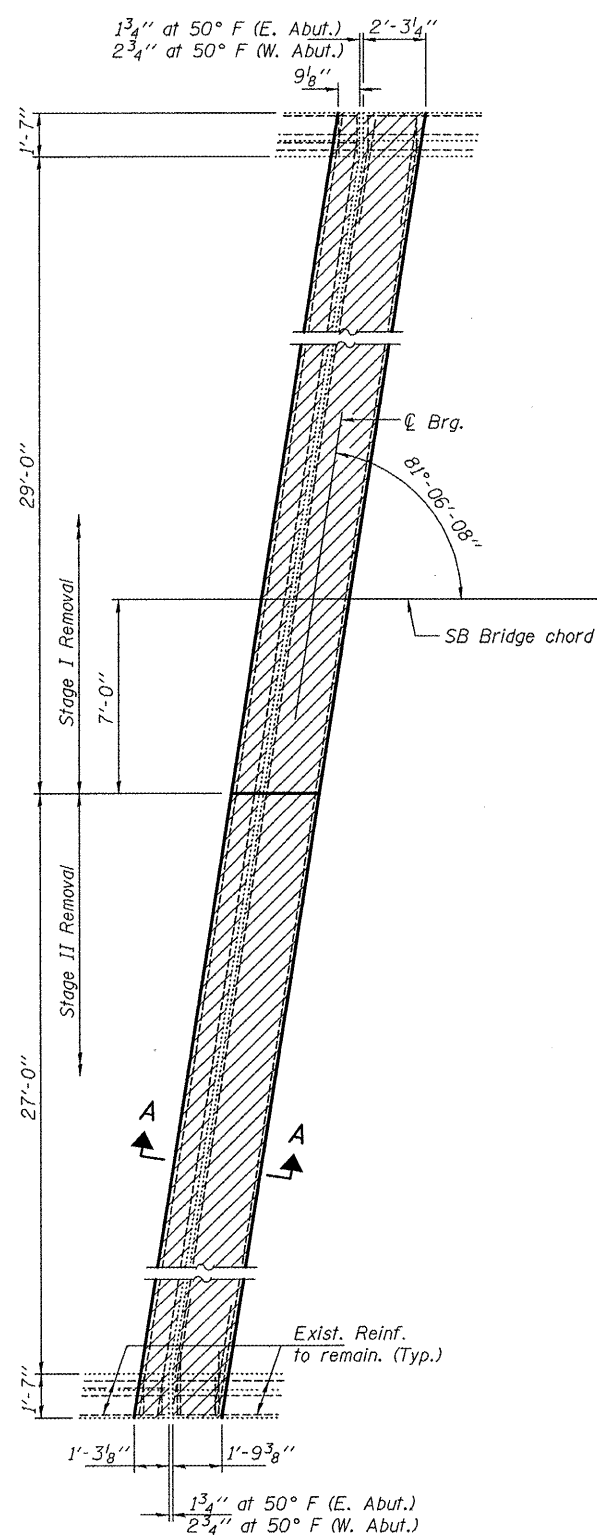
BARS d(E) & d2(E)



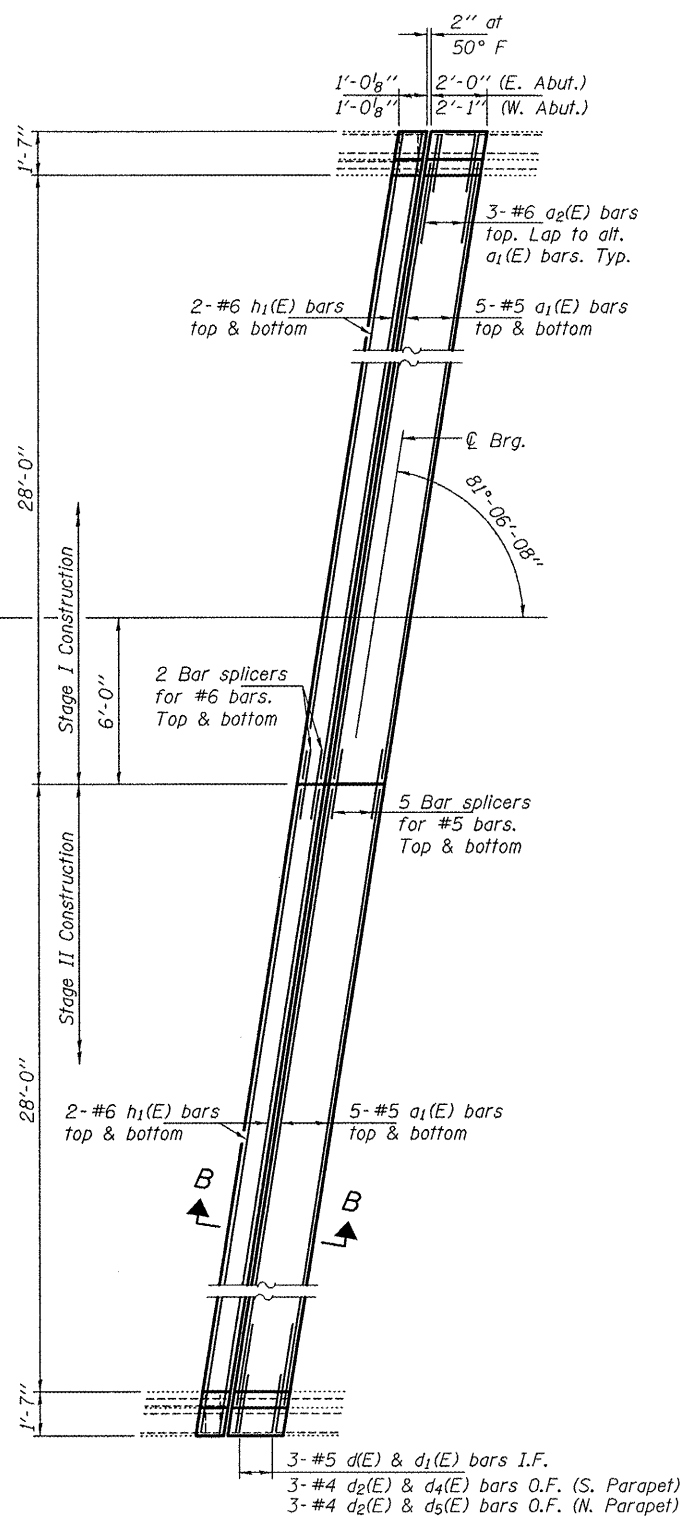
BAR d1(E)



BAR d4(E) & d5(E)

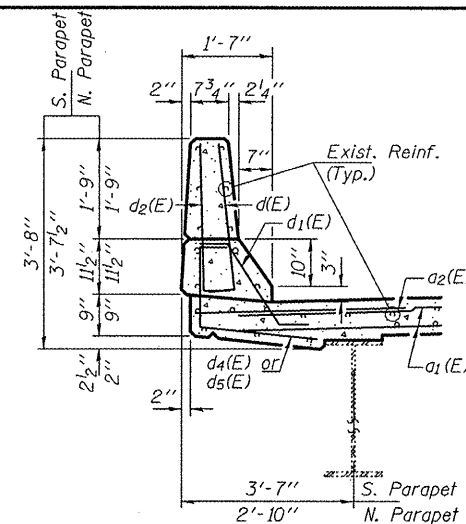


REMOVAL PLAN

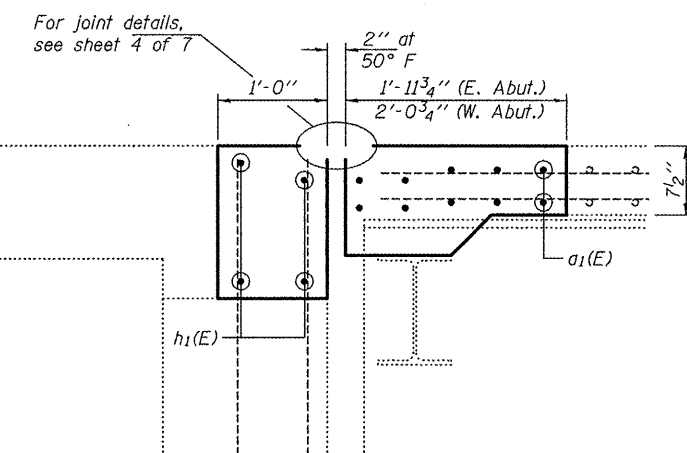


REPLACEMENT PLAN

East abutment shown
West abutment similar by rotation.



TYPICAL PARAPET SECTION



SECTION B-B
(Near Roadway)
(Dimensions are at RT L's to end of deck)

BILL OF MATERIAL

Bar	No.	Size	Length	Shape
a1(E)	40	#5	28'-10"	—
a2(E)	12	#6	4'-0"	—
d(E)	12	#5	3'-0"	┌
d1(E)	12	#5	2'-7"	┌
d2(E)	12	#4	3'-0"	┌
d4(E)	6	#4	4'-8"	┌
d5(E)	6	#4	3'-11"	┌
h1(E)	16	#6	29'-7"	—
Concrete Removal			Cu. Yd.	14.7
Concrete Superstructure			Cu. Yd.	14.8
Reinforcement Bars, Epoxy Coated			Lbs.	2110

JOINT REPLACEMENT DETAILS

FAI 55 OVER FANCY CREEK

SN 084-0023

Notes:
Hatched areas indicate removal.
For section thru approach parapet, see sheet 2 of 6.

DESIGNED	IJL
CHECKED	ATH
DRAWN	ballva
CHECKED	IJL ATH

MAY 7, 2010
EXAMINED *Carl Proyer*
ENGINEER OF STRUCTURAL SERVICES
PASSED *Ralph E. Anderson*
ENGINEER OF BRIDGES AND STRUCTURES

SHEET NO. 3 7 SHEETS	F.A.I. RTE.	SECTION	COUNTY	TOTAL SHEETS	SHEET NO.
	55	84 2(RS-3)	SANGAMON	156	139
FED. ROAD DIST. NO.			ILLINOIS	FED. AID PROJECT	
			CONTRACT NO. 72D43		

Rev. 5-26-10