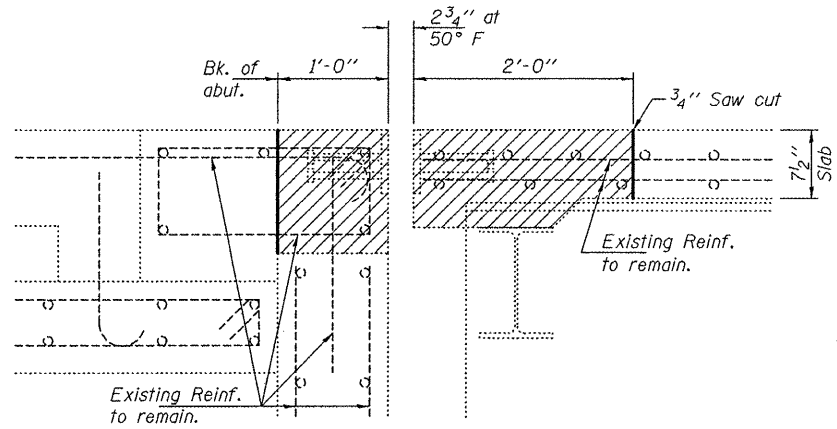
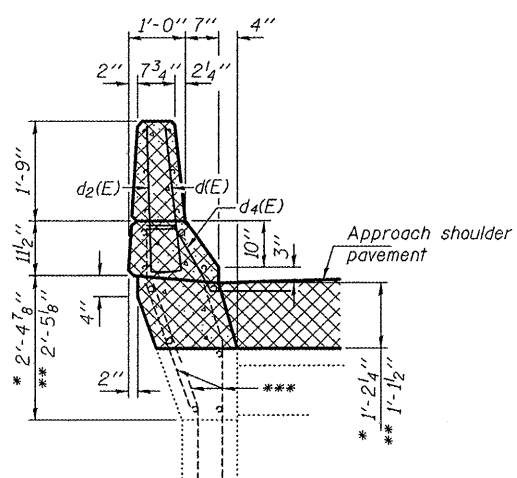


STATE OF ILLINOIS
DEPARTMENT OF TRANSPORTATION

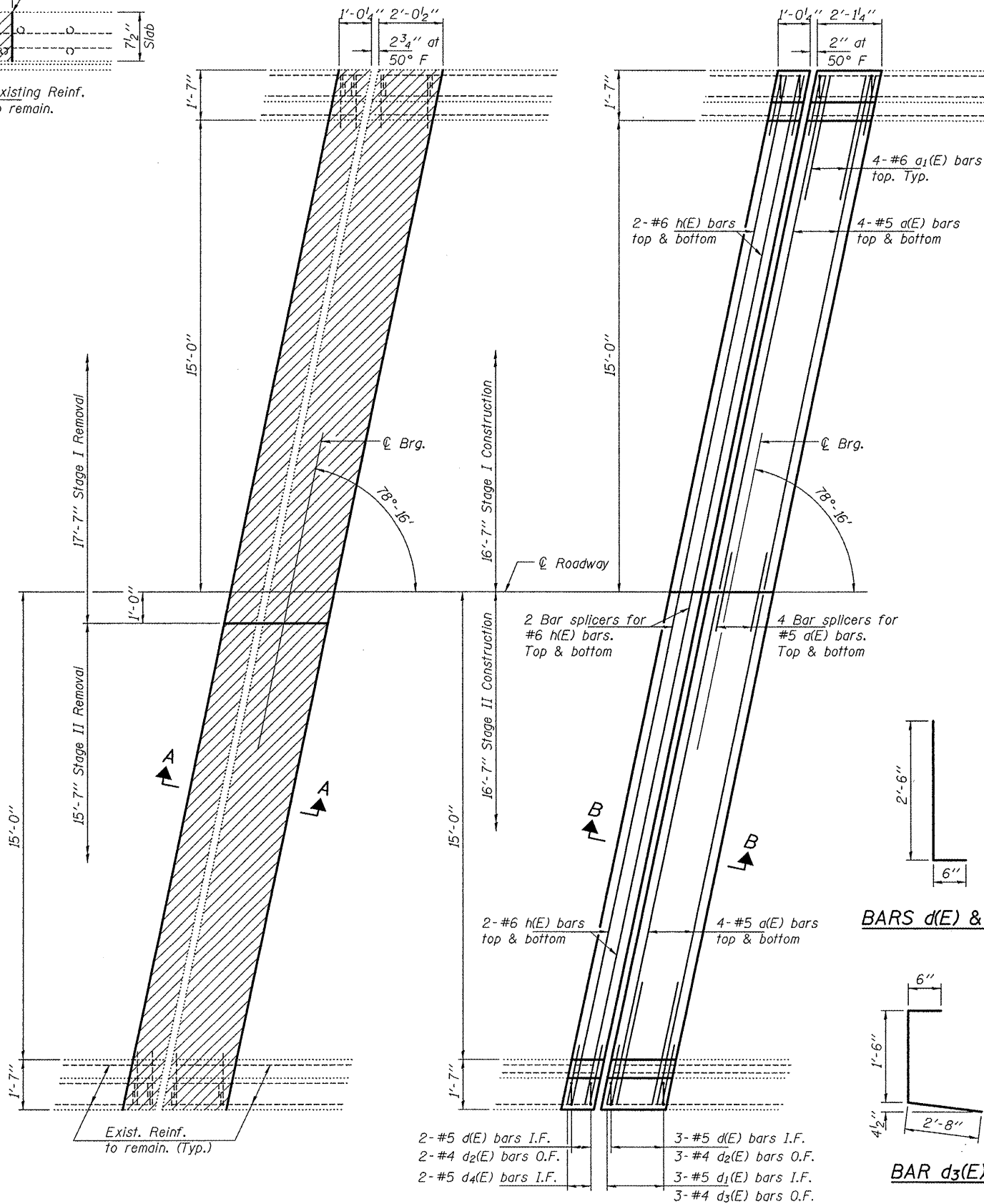


SECTION A-A
(Near Roadway)
(Dimensions are at RT L's to end of deck)



SECTION THRU APPROACH PARAPET

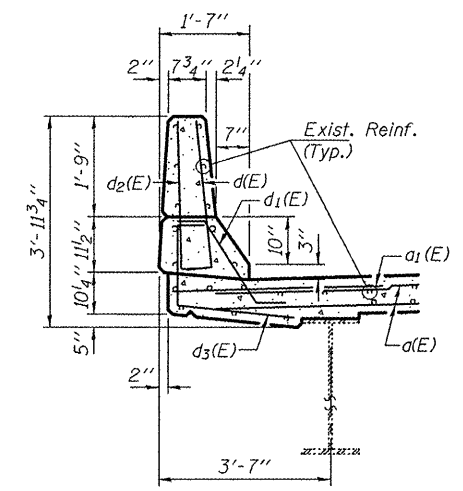
*** Existing reinforcement to be salvaged.
(And all longitudinal reinforcement)
* South wing
** North wing



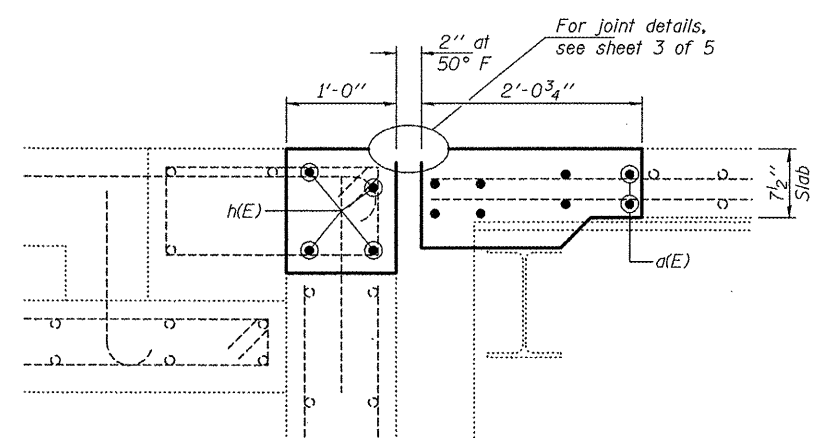
REMOVAL PLAN

REPLACEMENT PLAN

West abutment shown
East abutment similar by rotation.



TYPICAL PARAPET SECTION



SECTION B-B
(Near Roadway)
(Dimensions are at RT L's to end of deck)

BILL OF MATERIAL

Bar	No.	Size	Length	Shape
a(E)	32	#5	16'-4"	—
a1(E)	16	#6	4'-0"	—
d(E)	20	#5	3'-0"	L
d1(E)	12	#5	2'-7"	L
d2(E)	20	#4	3'-0"	L
d3(E)	12	#4	4'-8"	L
d4(E)	8	#5	3'-11"	L
h(E)	16	#6	16'-7"	—
Concrete Removal			Cu. Yd.	9.4
Concrete Superstructure			Cu. Yd.	9.6
Reinforcement Bars, Epoxy Coated			Lbs.	1240

JOINT REPLACEMENT DETAILS

CH 1 OVER FAI 55
SN 084-0088

Notes:
Hatched areas indicate removal.

SHEET NO. 2 5 SHEETS	F.A.I. RTE.	SECTION	COUNTY	TOTAL SHEETS	SHEET NO.
	55	84 2(RS-3)	SANGAMON	156	145
FED. ROAD DIST. NO.			ILLINOIS FED. AID PROJECT	CONTRACT NO. 72D43	

DESIGNED	IJL
CHECKED	ATH
DRAWN	ballva
CHECKED	IJL ATH

MAY 7, 2010
EXAMINED *Carl Krusey*
ENGINEER OF STRUCTURAL SERVICES
PASSED *Ralph E. Anderson*
ENGINEER OF BRIDGES AND STRUCTURES

Rev. 5-26-10