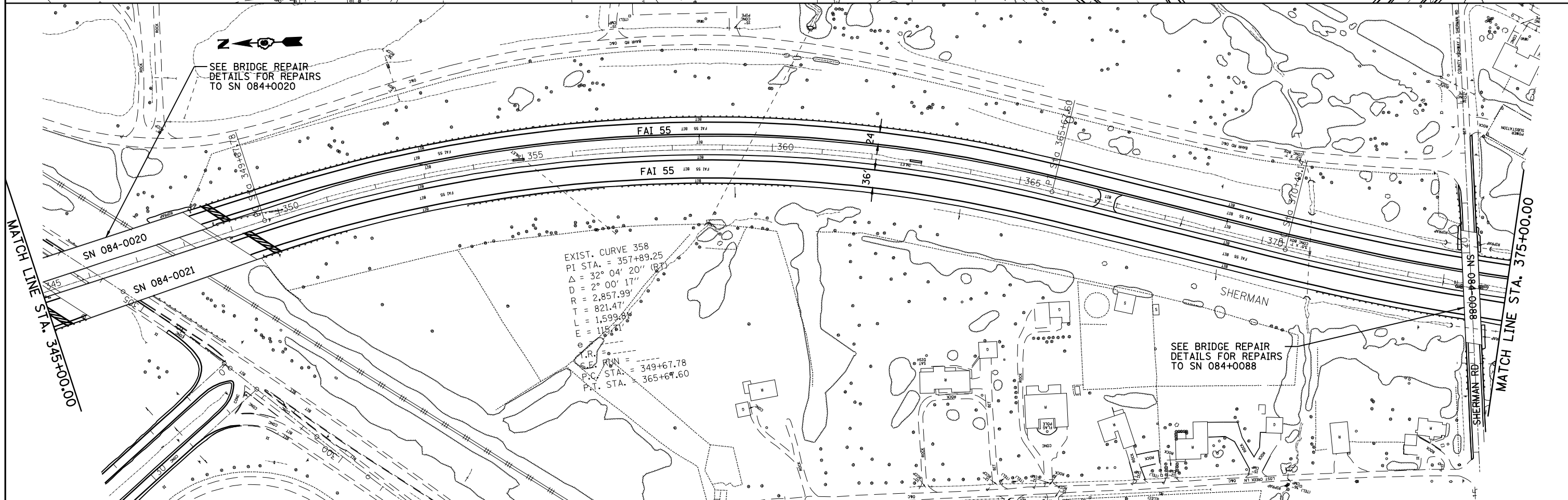


EXIST. CURVE 323
 PI STA. = 323+95.51
 $\Delta = 87^\circ 30' 40''$ (LT)
 D = $2^\circ 00' 01''$
 R = 2,864.23'
 T = 2,742.44'
 L = 4,374.71'
 E = 1,101.22'
 e = ----
 T.R. = ----
 S.E. RUN = ----
 P.C. STA. = 296+53.07
 P.T. STA. = 340+27.77

EXIST. CURVE 1603
 PI STA. = 3+83.96
 $\Delta = 12^\circ 55' 17''$ (LT)
 D = $1^\circ 41' 32''$
 R = 3,385.73'
 T = 383.40'
 L = 763.55'
 E = 21.64'
 e = ----
 T.R. = ----
 S.E. RUN = ----
 P.C. STA. = 0+00.56
 P.T. STA. = 7+64.11



EXIST. CURVE 358
 PI STA. = 357+89.25
 $\Delta = 32^\circ 04' 20''$ (RT)
 D = $2^\circ 00' 17''$
 R = 2,857.99'
 T = 821.47'
 L = 1,599.84'
 E = 118.71'
 e = ----
 T.R. = ----
 S.E. RUN = 349+67.78
 P.C. STA. = 365+69.60
 P.T. STA. = 365+69.60

FILE NAME =	USER NAME = laughlinr1	DESIGNED -	REVISED -	STATE OF ILLINOIS DEPARTMENT OF TRANSPORTATION	PLAN VIEW - I-55				F.A.I. RTE.	SECTION	COUNTY	TOTAL SHEETS	SHEET NO.
et:\pwwork\pwwid\LAUGHLINRL\0176540\0672043-sht-dblp1n100.dgn		DRAWN -	REVISED -		55	84-2(RS-3)	SANGAMON	156	41				
PLOT SCALE = 200.0000' / IN.		CHECKED -	REVISED -		CONTRACT NO. 72D43								
PLOT DATE = Apr-29-2010 07:38:51AM		DATE -	REVISED -		ILLINOIS FED. AID PROJECT								
					SCALE:	SHEET NO.	OF SHEETS	STA.	TO STA.				