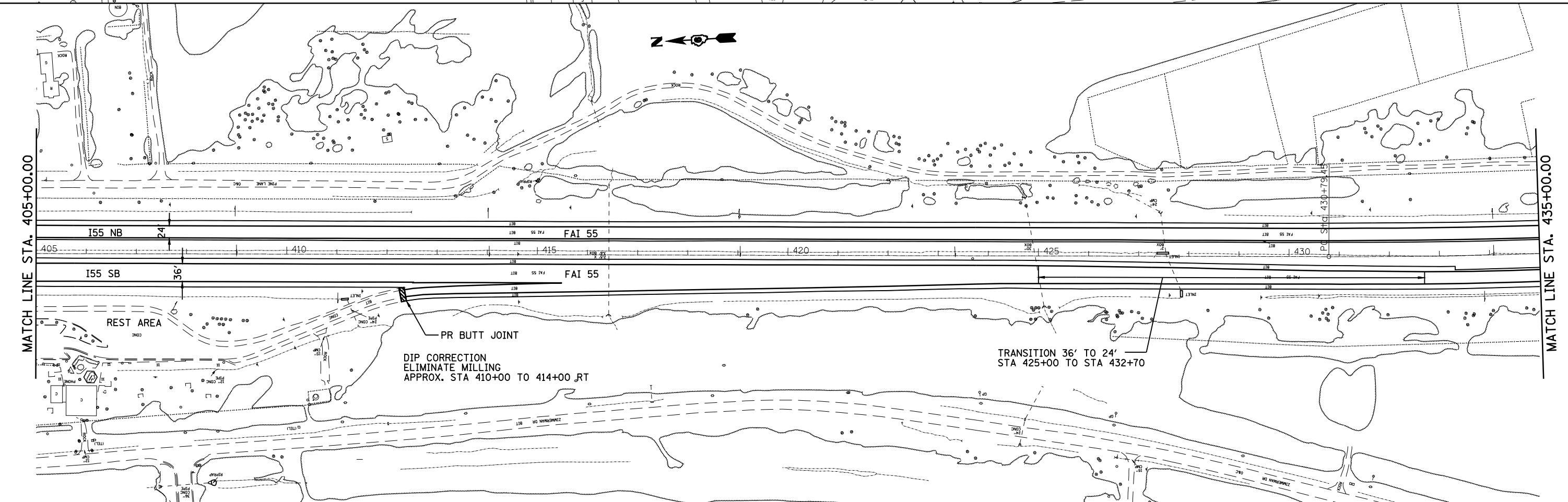
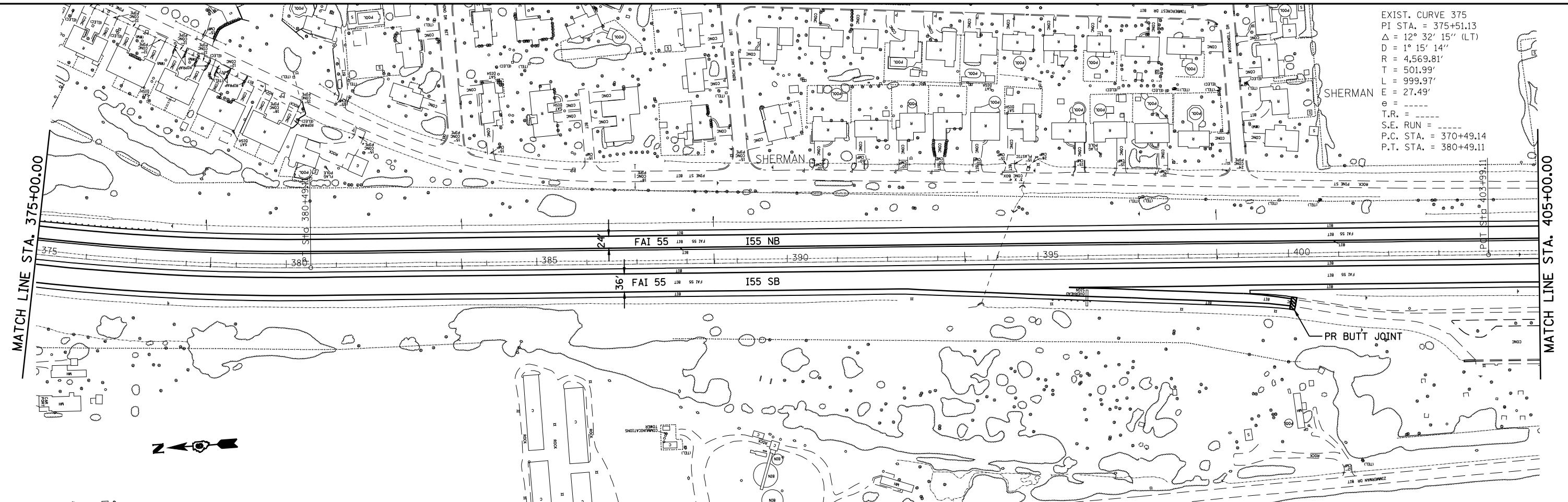


EXIST. CURVE 375  
 PI STA. = 375+51.13  
 $\Delta = 12^\circ 32' 15''$  (LT)  
 $D = 1^\circ 15' 14''$   
 $R = 4,569.81'$   
 $T = 501.99'$   
 $L = 999.97'$   
 $E = 27.49'$   
 $e =$  -----  
 T.R. = -----  
 S.E. RUN = -----  
 P.C. STA. = 370+49.14  
 P.T. STA. = 380+49.11



FILE NAME =  
 et:\pwork\PWIDOT\LAUGHLINRL\0176540\672043-sht-dblp1n100.dgn  
 USER NAME = laughlinr1  
 PLOT SCALE = 200.0000' / IN.  
 PLOT DATE = Apr-29-2010 07:38:58AM

DESIGNED -	REVISED -
DRAWN -	REVISED -
CHECKED -	REVISED -
DATE -	REVISED -

**STATE OF ILLINOIS  
 DEPARTMENT OF TRANSPORTATION**

**PLAN VIEW - I-55**

SCALE:	SHEET NO.	OF SHEETS	STA.	TO STA.
--------	-----------	-----------	------	---------

F.A.I. RTE.	SECTION	COUNTY	TOTAL SHEETS	SHEET NO.
55	84-2(RS-3)	SANGAMON	156	42
				CONTRACT NO. 72D43
ILLINOIS FED. AID PROJECT				