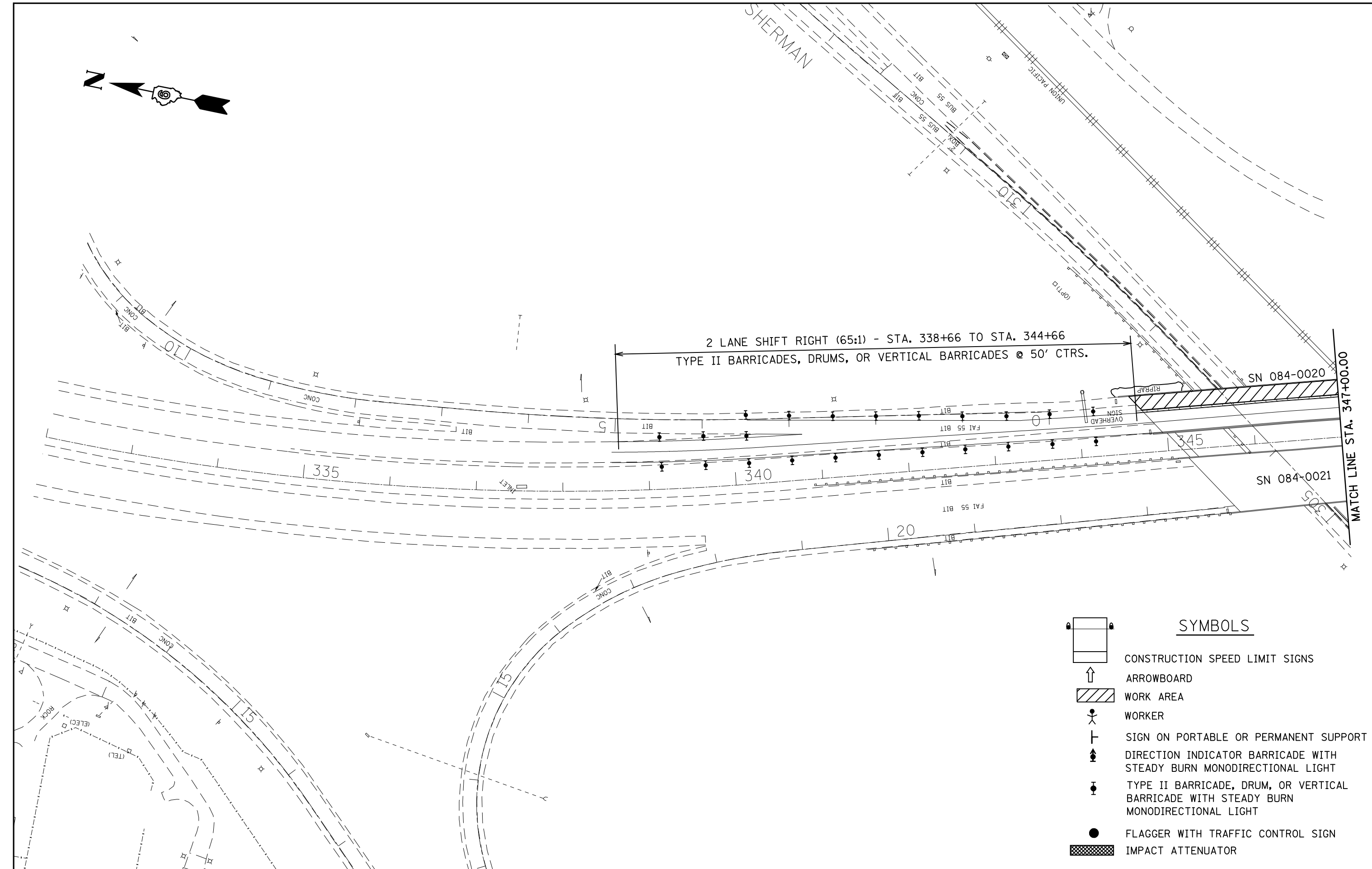
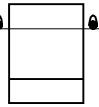

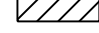

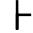






SHERMAN



2 LANE SHIFT RIGHT (65:1) - STA. 338+66 TO STA. 344+66  
 TYPE II BARRICADES, DRUMS, OR VERTICAL BARRICADES @ 50' CTRS.

MATCH LINE STA. 347+00.00

- SYMBOLS**
-  CONSTRUCTION SPEED LIMIT SIGNS
  -  ARROWBOARD
  -  WORK AREA
  -  WORKER
  -  SIGN ON PORTABLE OR PERMANENT SUPPORT
  -  DIRECTION INDICATOR BARRICADE WITH STEADY BURN MONODIRECTIONAL LIGHT
  -  TYPE II BARRICADE, DRUM, OR VERTICAL BARRICADE WITH STEADY BURN MONODIRECTIONAL LIGHT
  -  FLAGGER WITH TRAFFIC CONTROL SIGN
  -  IMPACT ATTENUATOR

FILE NAME =	USER NAME = laughlinr1	DESIGNED -	REVISED -
et:\pwork\PWIDOT\LAUGHLINRL\0176540\0672043-sht-stage1-SN20.dgn		DRAWN -	REVISED -
	PLOT SCALE = 100.0000' / IN.	CHECKED -	REVISED -
	PLOT DATE = Apr-29-2010 07:43:20AM	DATE -	REVISED -

**STATE OF ILLINOIS  
 DEPARTMENT OF TRANSPORTATION**

**STAGE I TRAFFIC CONTROL  
 SN 084-0020**

SCALE:      SHEET NO.      OF      SHEETS      STA.      TO STA.

F.A.I. RTE.	SECTION	COUNTY	TOTAL SHEETS	SHEET NO.
55	84-2(RS-3)	SANGAMON	156	99
CONTRACT NO. 72043			ILLINOIS FED. AID PROJECT	