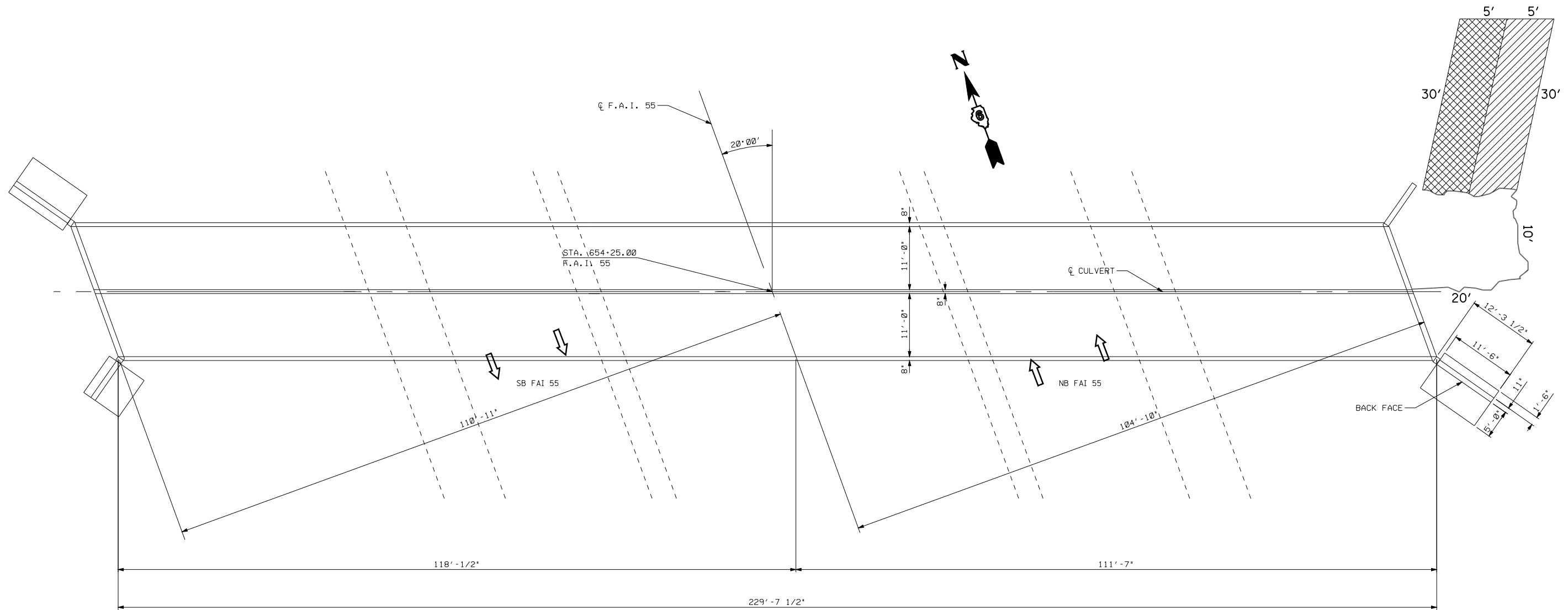
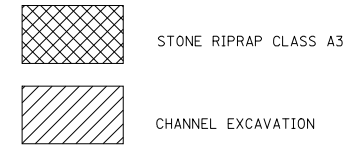


EXISTING STRUCTURE : SN 084-2000 IS A DOUBLE BARREL 11' x 6' CONCRETE BOX CULVERT STRUCTURE. HAS AN OVERALL LENGTH OF 25'-5" MEASURED ALONG ROADWAY AND TOTAL WIDTH OF 229'-7 1/2". IT CARRIES FAI 55 OVER HOOVER BRANCH AND IS LOCATED 0.5M SOUTH OF THE I-55/IL 54 INTERCHANGE IN SANGAMON COUNTY.

THIS IMPROVEMENT INCLUDES CHANNEL EXCAVATION AND RIPRAP.



PLAN

BILL OF MATERIALS

PAY CODE	ITEM	UNITS	QUANTITY
20300100	CHANNEL EXCAVATION	CU YD	82
28100205	STONE RIPRAP CLASS A3	TON	30

FILE NAME =	USER NAME = laughlinr1	DESIGNED -	REVISED -
et:\pw\work\PWIDOT\LAUGHLINRL\0176540\0672043-sht-brdgdetail.dgn		DRAWN -	REVISED -
	PLOT SCALE = 100.0000' / IN.	CHECKED -	REVISED -
	PLOT DATE = Apr-29-2010 07:49:05AM	DATE -	REVISED -

STATE OF ILLINOIS
DEPARTMENT OF TRANSPORTATION

BRIDGE DETAILS
SN 084-2000

SCALE: SHEET NO. OF SHEETS STA. TO STA.

F.A.I. RTE.	SECTION	COUNTY	TOTAL SHEETS	SHEET NO.
55	84-2(RS-3)	SANGAMON	156	156
CONTRACT NO. 72D43				
ILLINOIS FED. AID PROJECT				