

STATE OF ILLINOIS
DEPARTMENT OF TRANSPORTATION
DIVISION OF HIGHWAYS

PROPOSED
HIGHWAY PLANS

FAP ROUTE 666 (I-55 BL)
SECTION (27)I-1
PROJECT HSIP-0666(020)
TYPE of IMPROVEMENT
SANGAMON COUNTY
C-96-195-10

F.A.P. RTE.	SECTION	COUNTY	TOTAL SHEETS	SHEET NO.
666	(27)I-1	SANGAMON	7	1
		ILLINOIS	CONTRACT NO. 72D62	

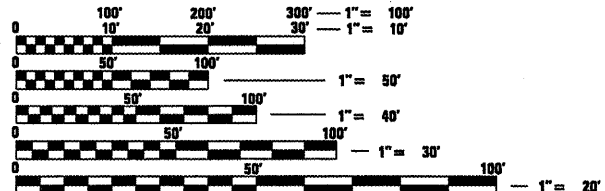
FOR INDEX OF SHEETS, SEE SHEET NO. 2

D-96-195-10



ADT
(2001) AVG 10,670
%MU + %SU = 7
ADT
(2021) AVG 13,200

RUMBLE STRIP OMISSIONS
STA 156+47.88 TO STA 160+86.08 SN 084-0179
STA 166+99.39 TO STA 173+24.54 SN 084-0030

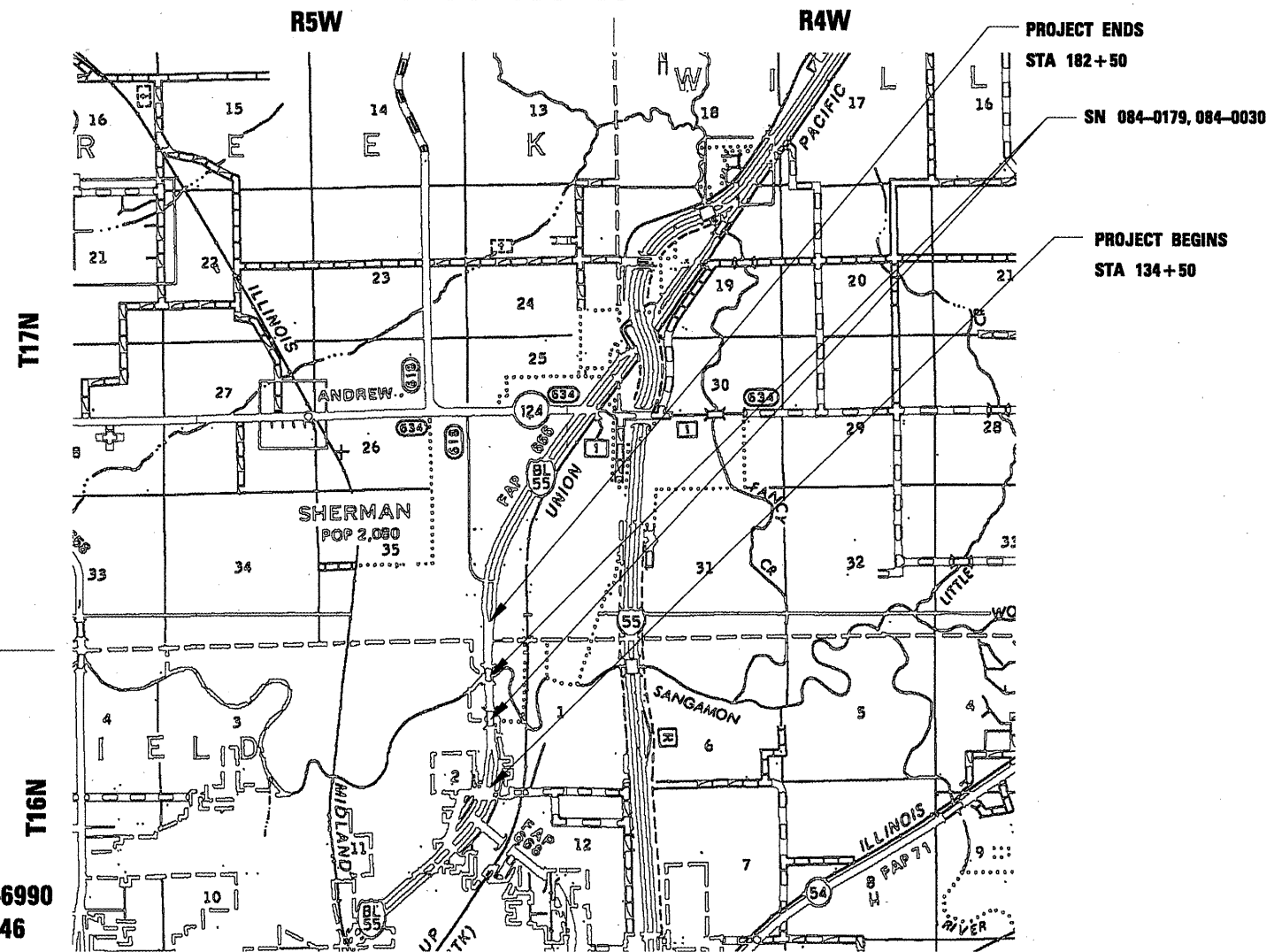


FULL SIZE PLANS HAVE BEEN PREPARED USING STANDARD ENGINEERING SCALES. REDUCED SIZED PLANS WILL NOT CONFORM TO STANDARD SCALES. IN MAKING MEASUREMENTS ON REDUCED PLANS, THE ABOVE SCALES MAY BE USED.

J.U.L.I.E.
JOINT UTILITY LOCATION INFORMATION FOR EXCAVATION
1-800-892-0123
OR 811

PROJECT ENGINEER: JOHN NEGANGARD 217-782-6990
PROJECT MANAGER: VINCE MADONIA 217-785-9046

CONTRACT NO. 72D62



GROSS LENGTH = 4800 FT = 0.91MI
NET LENGTH = 4800 FT = 0.91MI

STATE OF ILLINOIS
DEPARTMENT OF TRANSPORTATION
DIVISION OF HIGHWAYS

SUBMITTED *March 16 2010*
Roger J. Daskal
DEPUTY DIRECTOR OF HIGHWAYS, REGION ENGINEER

May 7 2010
Scott E. Stett, P.E.
acting ENGINEER OF DESIGN AND ENVIRONMENT

May 7 2010
Christine M. Reed, Esq.
DIRECTOR OF HIGHWAYS, CHIEF ENGINEER

PRINTED BY THE AUTHORITY
OF THE STATE OF ILLINOIS

GENERAL NOTES AND COMMENTS

1. ALL ENTRANCES CURRENTLY IN USE SHALL REMAIN ACCESSIBLE BOTH DURING AND AFTER CONSTRUCTION.
2. NO LANE CLOSURES WILL BE ALLOWED WITHOUT FLAGGER PROTECTION AND NO WORK OR LANE CLOSURES PRIOR TO 9:00 AM OR AFTER 3:30 PM
3. THERE SHALL BE NO LANE CLOSURES WITHIN THE LIMITS OF THIS PROJECT DURING THE ILLINOIS STATE FAIR.

COMMITMENTS

THE FIELD/RESIDENT ENGINEER SHALL CONTACT STUDIES AND PLANS CONCERNING ANY MAJOR PLAN CHANGES TO MAKE SURE NO PREVIOUS COMMITMENTS (NOT LISTED) WERE MADE AFFECTING THE DESIGN, AND ALLOW AN IMPROVED DESIGN FOR FUTURE PROJECTS.

INDEX OF SHEETS

- | | |
|-----|-----------------------|
| 1 | COVER SHEET |
| 2 | GENERAL NOTES |
| 3 | SUMMARY OF QUANTITIES |
| 4 | SCHEDULES |
| 5-6 | PLAN VIEW |
| 7 | RUMBLE STRIP DETAILS |

LIST OF STANDARDS

- 642001-01
- 701101-02
- 701106-02
- 701421-02
- 701426-03
- 701901-01
- 780001-02
- 781001-03

DISTRICT SIX	
EXAMINED <u><i>Aie Waller</i></u>	20 <u><i>3/2/10</i></u>
OPERATIONS ENGINEER	
EXAMINED <u><i>3-3</i></u>	20 <u><i>10</i></u>
<u><i>Jimmy F. L.</i></u> PROGRAM IMPLEMENTATION ENGINEER	
EXAMINED <u><i>March 5</i></u>	20 <u><i>10</i></u>
<u><i>QRMLJ</i></u> PROGRAM DEVELOPMENT ENGINEER	

FILE NAME =	USER NAME = bej	DESIGNED -	REVISED -	STATE OF ILLINOIS DEPARTMENT OF TRANSPORTATION	GENERAL NOTES	F.A.P. RTE.	SECTION	COUNTY	TOTAL SHEETS	SHEET NO.	
ct:\pwork\PW100T\BAIJ\d0184527\sh-t-gen	ate.dgn	DRAWN -	REVISED -			666	(27)-1	SANGAMON	7	2	
	PLOT SCALE = 100.0000 / IN.	CHECKED -	REVISED -			CONTRACT NO. 72062					
	PLOT DATE = Mar-16-2010 08:56:04AM	DATE -	REVISED -			ILLINOIS FED. AID PROJECT					
					SCALE:	SHEET NO. OF SHEETS STA. TO STA.					

				Sangamon County			
				90% FEDERAL 10% STATE			
			URBAN				
Code No.	Item	Unit	Total	SFTY-1D			
64200105	SHOULDER RUMBLE STRIP	FOOT	7,176.0	7,176.0			
67100100	MOBILIZATION	L SUM	1.0	1.0			
70100310	TRAFFIC CONTROL AND PROTECTION, STANDARD 701421	L SUM	1.0	1.0			
X0326898	CENTER LINE - RUMBLE STRIP - 16"	FOOT	3,580.0	3,580.0			
X7800620	URETHANE PAVEMENT MARKING - LINE 5"	FOOT	16,760.0	16,760.0			

SHOULDER RUMBLE STRIPS CENTER LINE RUMBLE STRIPS					
LOCATION	STA	TO	STA	CENTER LINE (FT)	SHOULDER (FT)
	134+50	TO	141+20	0	1,340
	141+20	TO	155+96	1,476	2,952
BRIDGE	155+96	TO	161+37	541	0
	161+37	TO	166+74	537	1,074
BRIDGE	166+74	TO	173+45	671	0
	173+45	TO	177+00	355	710
	177+00	TO	182+50	0	1,100
				3,580	7,176

URETHANE PAVEMENT MARKING - LINE 5"					
STA	TO	STA	DISTANCE (FT)	CTR-LINE QUANTITY (FT)	EOP QUANTITY (FT)
134+50	TO	141+20	670	0	1,340
141+20	TO	177+00	3,580	7,160	7,160
177+00	TO	182+50	550	0	1,100
				7,160	9,600
			Total		16,760

WHITE = 9,600

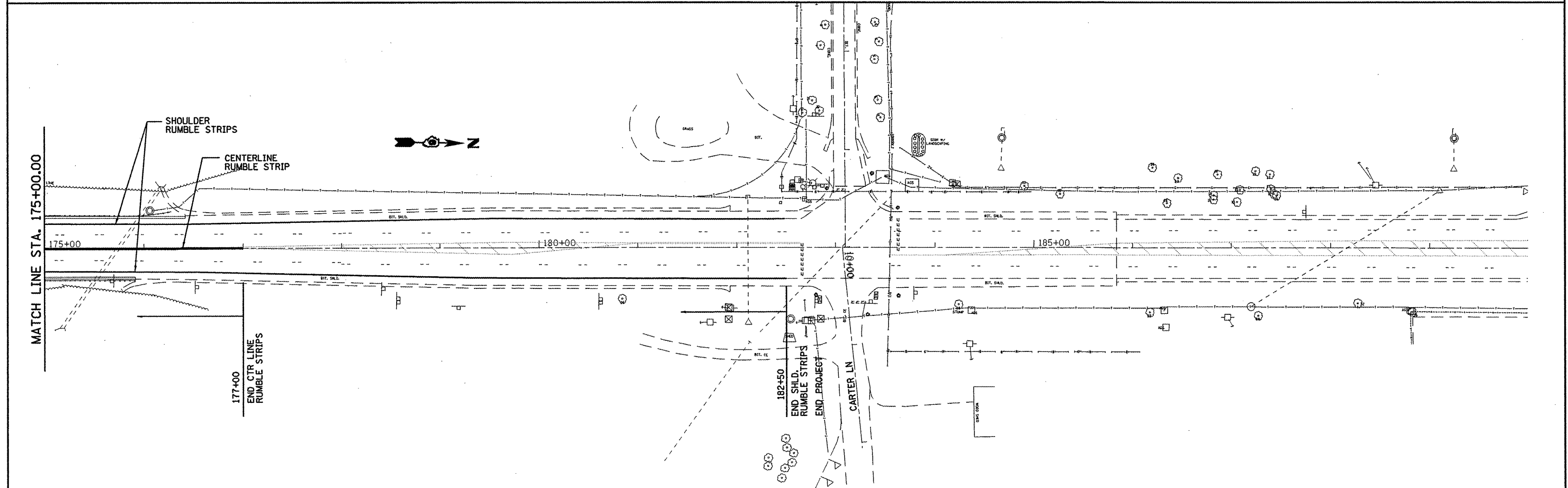
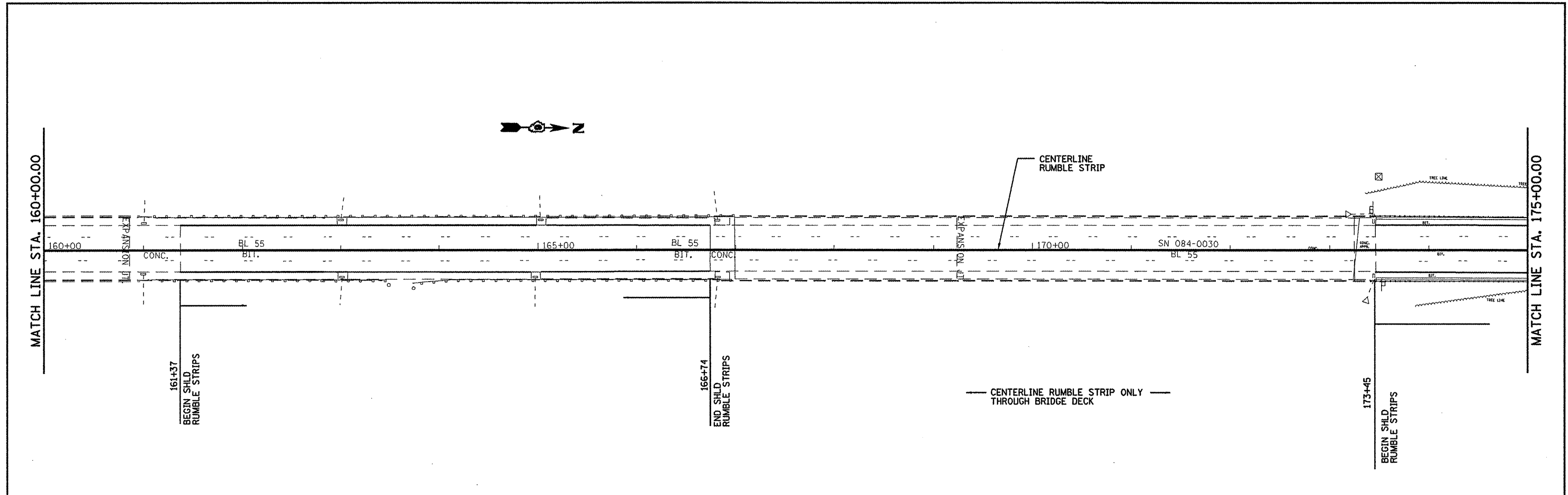
YELLOW = 7,160

FILE NAME =	USER NAME = laughlinr1	DESIGNED -	REVISED -
ci:\pwwork\FWIDOT\LAUGHLINRL\ad8184527\572062-aht-schedule.dgn		DRAWN -	REVISED -
PLOT SCALE = 100.0000 ' / IN.		CHECKED -	REVISED -
PLOT DATE = Mar-17-2010 09:15:23AM		DATE -	REVISED -

**STATE OF ILLINOIS
DEPARTMENT OF TRANSPORTATION**

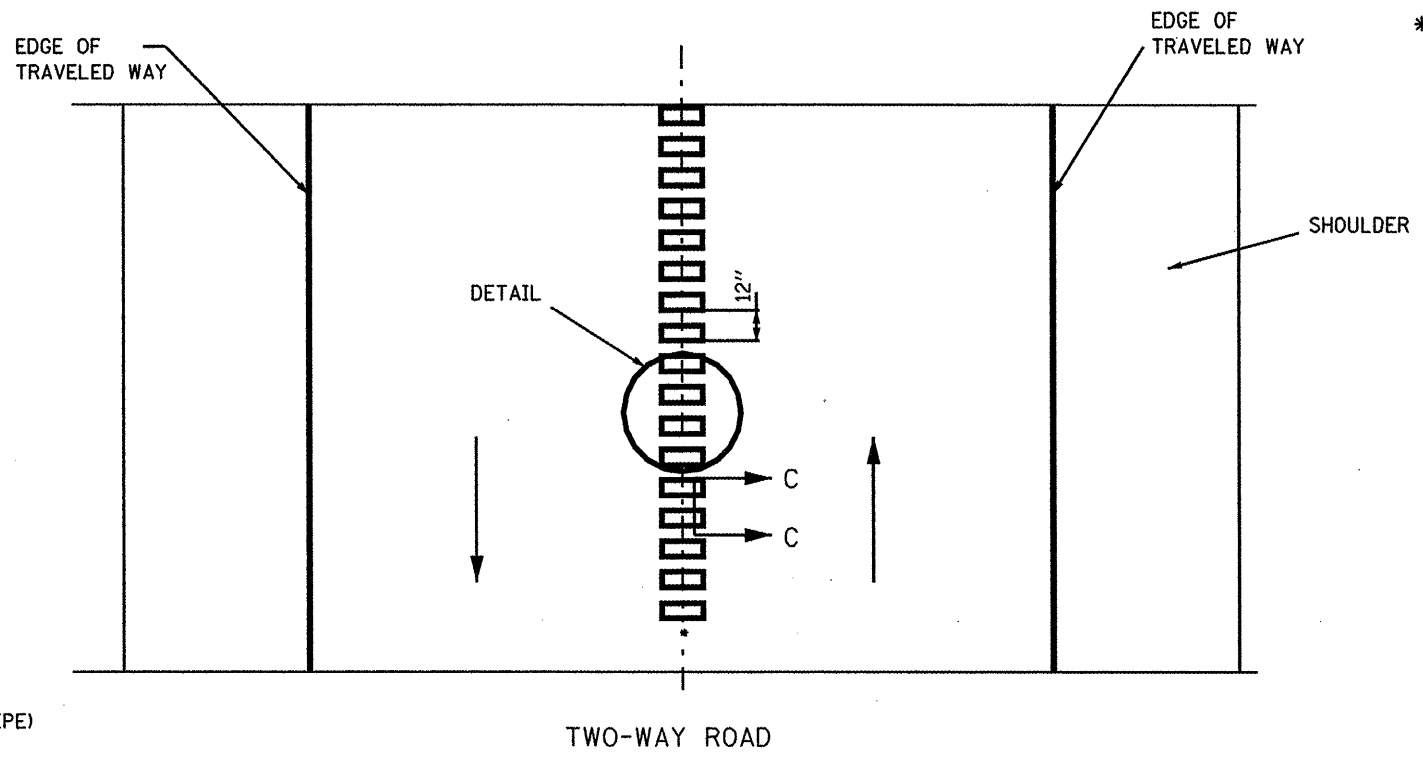
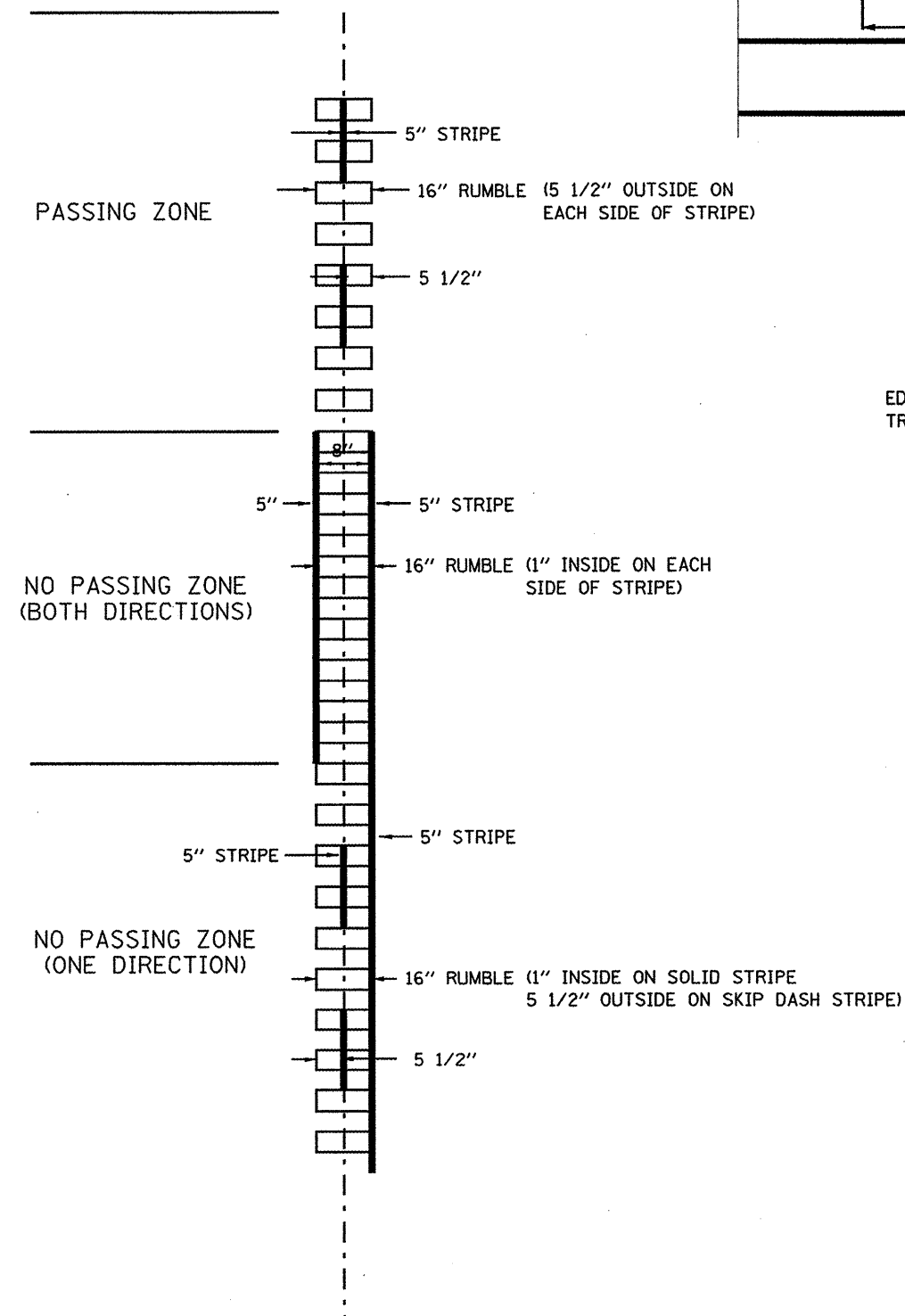
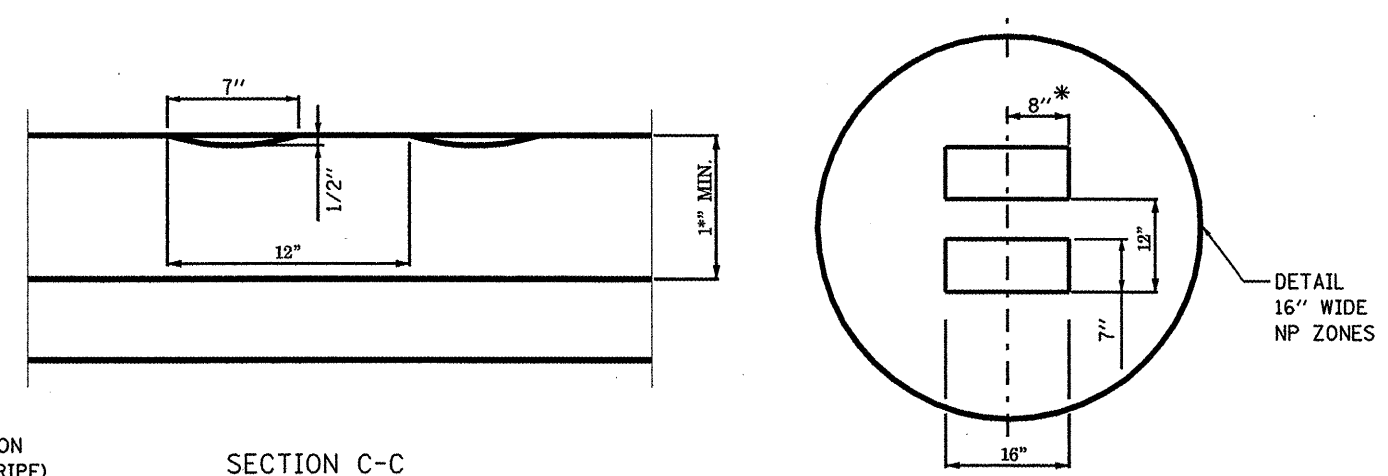
SCHEDULES			
SCALE:	SHEET NO.	OF SHEETS	STA. TO STA.

F.A.P. RTE.	SECTION	COUNTY	TOTAL SHEETS	SHEET NO.
666	(27)I-1	SANGAMON	7	4
CONTRACT NO. 72062				
ILLINOIS FED. AID PROJECT				



FILE NAME =	USER NAME = laughlinr1	DESIGNED -	REVISED -	STATE OF ILLINOIS DEPARTMENT OF TRANSPORTATION	PLAN VIEW				F.A.P. RTE.	SECTION	COUNTY	TOTAL SHEETS	SHEET NO.
et:\pwwork\pwwid01\LAUGHLINR1\d0184527\0672d62-shr-dblpln50.dgn		DRAWN -	REVISED -		666	(27)-1	SANGAMON	7	6				
PLOT SCALE = 100.0000 / IN.		CHECKED -	REVISED -		CONTRACT NO. 72062								
PLOT DATE = Mar-17-2010 09:15:28AM		DATE -	REVISED -		ILLINOIS FED. AID PROJECT								
				SCALE:	SHEET NO.	OF	SHEETS	STA.	TO STA.				

SKIP-DASH
PAVEMENT MARKING



* = LATERAL DEVIATION SHALL NOT EXCEED ONE INCH IN 100 FEET.

GENERAL NOTES:

SKIP OVER EXISTING (4' GAP, 2' ON EACH SIDE) RAISED REFLECTIVE PAVEMENT MARKERS

ALL RUMBLE STRIPS SHALL BE MILLED.

CENTERLINE RUMBLE STRIPS SHALL NOT BE CONTINUOUS THROUGH CONNECTIONS OF SIDEROADS WITH NO LEFT TURN LANES.

DISCONTINUE CENTERLINE RUMBLE STRIPS THROUGH THE LIMITS OF ALL LEFT TURN LANES, INCLUDING ANY LANE TAPER SECTIONS.

FILE NAME =	USER NAME = laughlinr1	DESIGNED -	REVISED -
c:\pwwork\pwidot\LAUGHLINR1\d01845270672062-shr-detaile.dgn		DRAWN -	REVISED -
PLOT SCALE = 200.0000' / IN.		CHECKED -	REVISED -
PLOT DATE = Mar-17-2010 09:53:11AM		DATE -	REVISED -

STATE OF ILLINOIS
DEPARTMENT OF TRANSPORTATION

RUMBLE STRIPS CENTERLINE DETAIL			
SCALE:	SHEET NO. OF SHEETS	STA. TO STA.	

F.A.P. RTE.	SECTION	COUNTY	TOTAL SHEETS	SHEET NO.
658	(27)I-1	SANGAMON	7	7
CONTRACT NO. 72D19				
ILLINOIS FED. AID PROJECT				