

F.A.P. RTE.	SECTION	COUNTY	TOTAL SHEETS	SHEET NO.
75	(2Z)N,I	CHRISTIAN	8	1
		ILLINOIS	CONTRACT NO. 72D64	

STATE OF ILLINOIS
DEPARTMENT OF TRANSPORTATION
DIVISION OF HIGHWAYS

D-96-197-10

INDEX OF SHEETS

- 1 COVER SHEET
- 2 GENERAL NOTES
- 3 SUMMARY OF QUANTITIES
- 4 SCHEDULE OF QUANTITIES
- 5 REMOVAL SHEET
- 6 PLAN SHEET
- 7 DETECTABLE WARNINGS
- 8 PAVEMENT MARKINGS

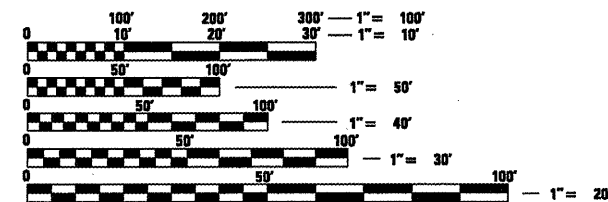
**PROPOSED
HIGHWAY PLANS**

**FAP ROUTE 75 (IL 29)
SECTION (2Z)N,I
PROJECT HSIP-0075(155)
SIDEWALK IMPROVEMENT
CHRISTIAN COUNTY**

C-96-197-10

HIGHWAY STANDARDS

- 000001-05
- 424001-05
- 606001-04
- 701001-02
- 701006-03
- 701501-05
- 701801-04
- 701901-01
- 780001-02



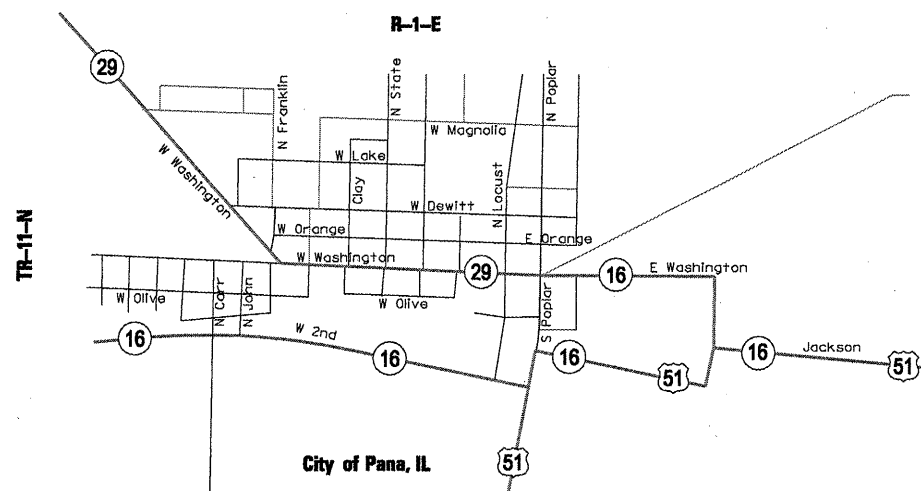
FULL SIZE PLANS HAVE BEEN PREPARED USING STANDARD ENGINEERING SCALES. REDUCED SIZED PLANS WILL NOT CONFORM TO STANDARD SCALES. IN MAKING MEASUREMENTS ON REDUCED PLANS, THE ABOVE SCALES MAY BE USED.

J.U.L.I.E.
JOINT UTILITY LOCATION INFORMATION FOR EXCAVATION
1-800-892-0123
OR 811

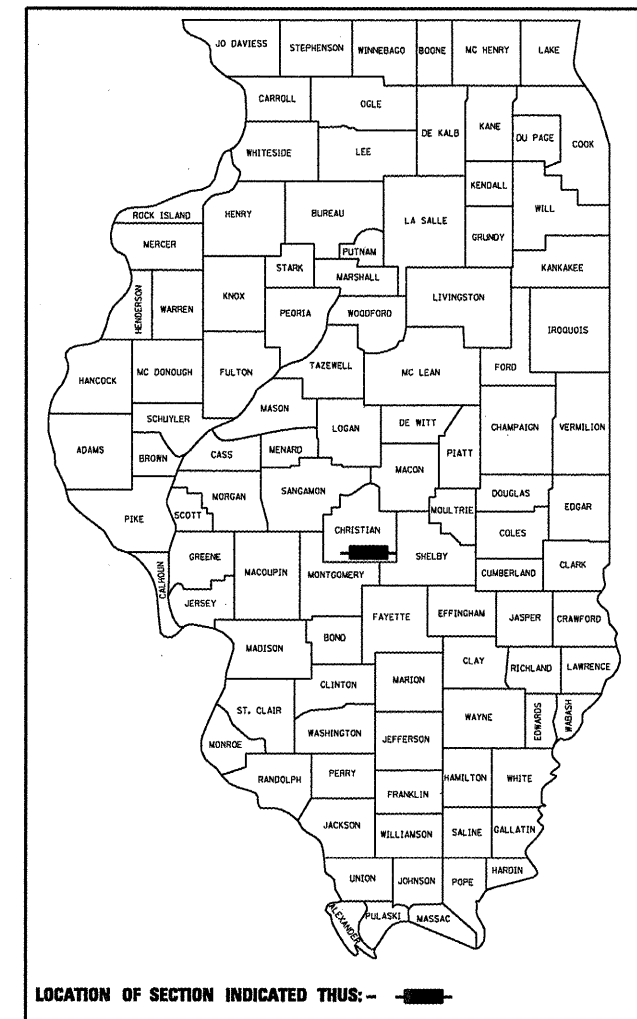
PROJECT ENGINEER : SAL MADONIA (217)782-4761
PROJECT MANAGER : JEFF MYERS (217)524-7940

CONTRACT NO. 72D64

GROSS LENGTH = 250 FT. = 0.05 MILE
NET LENGTH = 250 FT. = 0.05 MILE



**INTERSECTION IMPROVEMENT AT
IL 29 & POPLAR STREET**



LOCATION OF SECTION INDICATED THUS: - [black rectangle] -

ADT = 5900

STATE OF ILLINOIS
DEPARTMENT OF TRANSPORTATION
DIVISION OF HIGHWAYS

SUBMITTED MARCH 17 2010
Regan Z. D... / Deputy Director of Highways, Region Engineer
May 7 2010
Scott E. Stitt, P.E. / Engineer of Design and Environment
May 7 2010
Christine M. Reed / Director of Highways, Chief Engineer

**PRINTED BY THE AUTHORITY
OF THE STATE OF ILLINOIS**

GENERAL NOTES

1. ANY REFERENCE TO A STANDARD IN THESE PLANS SHALL BE INTERPRETED TO MEAN THE EDITION AS INDICATED BY THE SUB NUMBER LISTED IN THE INDEX OF SHEETS OR THE COPY OF THE STANDARD INCLUDED IN THESE PLANS.
2. IN ADDITION TO FIELD SURVEYS, PLAN DIMENSIONS AND DETAILS RELATIVE TO THE EXISTING FACILITIES HAVE BEEN TAKEN FROM EXISTING PLANS AND ARE SUBJECT TO CONSTRUCTION VARIATIONS. IT SHALL BE THE CONTRACTOR'S RESPONSIBILITY TO VERIFY SUCH DIMENSIONS AND DETAILS IN THE FIELD. SUCH VARIATIONS SHALL NOT BE A CAUSE FOR ADDITIONAL COMPENSATION DUE TO A CHANGE IN THE SCOPE OF WORK, HOWEVER, THE CONTRACTOR WILL BE PAID FOR THE QUANTITY ACTUALLY FURNISHED AT THE UNIT PRICE BID FOR THE WORK.
3. ACCESS TO ALL ENTRANCES AND SIDE ROADS SHALL BE MAINTAINED AT ALL TIMES.
4. THE CONTRACTOR SHALL BE RESPONSIBLE FOR PROTECTING UTILITY PROPERTY FROM CONSTRUCTION OPERATIONS, AS OUTLINED IN ARTICLE 107.31 OF THE STANDARD SPECIFICATIONS. THE J.U.L.I.E. NUMBER IS 1-800-892-0123. A MINIMUM OF 48 HOURS ADVANCE NOTICE IS REQUIRED.
5. ALL SAW CUTS, NECESSARY TO COMPLETE THE WORK DETAILED IN THESE PLANS, SHALL BE INCLUDED IN THE COST FOR THE VARIOUS PAY ITEMS INVOLVED.
6. UNLESS DIRECTED BY THE ENGINEER, PAVEMENT MARKING LINES SHALL NOT BE LAID DIRECTLY OVER A LONGITUDINAL CRACK OR JOINT NOR OVER A TAR OR ASPHALT PAINTED LINE. THE EDGE OF A CENTERLINE OR LANE LINE SHALL BE OFFSET A MINIMUM DISTANCE OF 2" FROM A LONGITUDINAL CRACK OR JOINT. EDGE LINES SHALL BE APPROXIMATELY 2" FROM THE EDGE LINE OF PAVEMENT. SEE SECTION 780 OF THE STANDARD SPECIFICATIONS FOR TRAFFIC CONTROL ITEMS.
7. WHERE SECTION OR SUB-SECTION MARKERS ARE ENCOUNTERED, THE ENGINEER SHALL BE NOTIFIED BEFORE SUCH MONUMENTS ARE REMOVED. THE CONTRACTOR SHALL PROTECT AND CAREFULLY PRESERVE ALL PROPERTY MARKERS AND MONUMENTS UNTIL THE OWNER, AN AUTHORIZED AGENT OR LAND SURVEYOR HAS WITNESSED OR OTHERWISE REFERENCED THEIR LOCATION.
8. THE DISTRICT BUREAU OF OPERATIONS SHALL BE NOTIFIED AT LEAST 14 DAYS PRIOR TO PLACEMENT OF FINAL PAVEMENT MARKINGS, PHONE (217) 782-7314.
9. ALL OF THE DISTURBED AREAS WITHIN THE RIGHT OF WAY NOT COVERED BY SURFACING MATERIAL SHALL BE SEEDED. THE COST OF SEEDING AND FERTIZER SHALL NOT BE PAID FOR SEPERATELY BUT INCLUDED IN THE COST OF THE ASSOCIATED PAY ITEM.

DISTRICT SIX	
EXAMINED <u>March 16</u> 20 <u>10</u>	
<i>Chris Waller</i>	
OPERATIONS ENGINEER	

EXAMINED <u>MARCH 18</u> 20 <u>10</u>	
<i>Jimmy Ford</i>	
PROGRAM IMPLEMENTATION ENGINEER	
EXAMINED <u>March 22</u> 20 <u>10</u>	
<i>JRML</i>	
PROGRAM DEVELOPMENT ENGINEER	

FILE NAME =	USER NAME = kernee	DESIGNED -	REVISED -	STATE OF ILLINOIS DEPARTMENT OF TRANSPORTATION	GENERAL NOTES FAP 75 (IL 29)	F.A.P. RTE.	SECTION	COUNTY	TOTAL SHEETS	SHEET NO.	
ct:\pwork\pwidot\kernee\d0183474\0672064-shs-gennote.dgn		DRAWN -	REVISED -			75	(22)N.I	CHRISTIAN	8	2	
PLOT SCALE = 100.0000 "/ IN.		CHECKED -	REVISED -			SCALE: SHEET NO. OF SHEETS STA. TO STA.		CONTRACT NO. 72D64			
PLOT DATE = Mar-22-2010 08:18:39AM		DATE -	REVISED -			ILLINOIS FED. AID PROJECT					

			URBAN	90% FED 10% STATE
			CONSTRUCTION TYPE CODE	
CODE NO.	ITEM	UNIT	TOTAL QUANTITY	SFTY-1B
20200100	EARTH EXCAVATION	CU YD	5.1	5.1
35300700	PORTLAND CEMENT CONCRETE BASE COURSE 12"	SQ YD	2.6	2.6
42400100	PORTLAND CEMENT CONCRETE SIDEWALK 4 INCH	SQ FT	631.8	631.8
42400800	DETECTABLE WARNINGS	SQ FT	149.7	149.7
44000500	COMBINATION CURB AND GUTTER REMOVAL	FOOT	66	66
44000600	SIDEWALK REMOVAL	SQ FT	101.6	101.6
44003100	MEDIAN REMOVAL	SQ FT	152	152
60603800	COMBINATION CONCRETE CURB AND GUTTER, TYPE B-6.12	FOOT	55.8	55.8
67100100	MOBILIZATION	L SUM	1	1
70103700	TRAFFIC CONTROL COMPLETE	L SUM	1	1
70103815	TRAFFIC CONTROL SURVEILLANCE	CAL DA	10	10
70301000	WORK ZONE PAVEMENT MARKING REMOVAL	SQ FT	143	143
72400710	RELOCATE SIGN PANEL - TYPE 1	SQ FT	10.4	10.4
78001130	PAINT PAVEMENT MARKING - LINE 6"	FOOT	333.6	333.6
78001180	PAINT PAVEMENT MARKING - LINE 24"	FOOT	78.1	78.1
Z0048665	RAILROAD PROTECTIVE LIABILITY INSURANCE	L SUM	1	1

PCC SIDEWALK, 4"

LOCATION	AREA (SQ FT)
NW Quad	56.5
NW Quad	36.6
NE Quad	73.2
SW Quad	85.4
SE Quad	253.6
SE Island	30.4
East Median	35.2
West Median	31.9
North Median	29.0
TOTAL	631.8

DETECTABLE WARNINGS

LOCATION	LENGTH	WIDTH	AREA (SQ FT)
NW Quad	2.0	5	10.0
NW Quad	2.0	5	10.0
NE Quad	2.0	9.3	18.6
SW Quad	2.0	7.2	14.4
SE Quad	2	5	10.0
SE Island	2.0	5	10.0
SE Island	2.0	5.6	11.2
West Median	5.4	5	27.0
East Median	2	5	10.0
East Median	2	5	10.0
North Median	3.7	5	18.5
TOTAL			149.7

COMBINATION CONCRETE CURB AND GUTTER, TYPE B-6, 12"

LOCATION	LENGTH (FOOT)
IL 29	
STA 833+03 TO STA 833+09	NW Quad 5.2
POPLAR	
STA 49+62 TO STA 49+68	NW Quad 6.8
STA 49+72 TO STA 49+75	NW Quad 5.0
STA 49+65 TO STA 49+74	NE Quad 12.7
STA 50+37 TO STA 50+46	SW Quad 12.5
STA 50+42 TO STA 50+46	SE Quad 6.0
STA 50+62 TO STA 50+69	SE Quad 7.6
TOTAL	55.8

PCC BASE COURSE, 12"

LOCATION	AREA (SY)
STA 833+03 TO STA 833+08	West Median 1.1
STA 833+79 TO STA 833+84	SE Island 1.2
STA 833+81 TO STA 833+85	SE Island 0.3
TOTAL	2.6

EARTH EXCAVATION

LOCATION	AREA (SQ FT)	VOLUME (CU YD)
NW Quad	56.5	0.7
NW Quad	36.6	0.5
NE Quad	22.1	0.3
SW Quad	41.6	0.5
SE Quad	253.6	3.1
TOTAL		5.1

COMBINATION CURB & GUTTER REMOVAL

LOCATION	LENGTH (FOOT)
IL 29	
STA 833+03 TO STA 833+09	NW Quad 5.2
STA 833+80 TO STA 833+85	SE Island 5.2
POPLAR	
STA 49+62 TO STA 49+68	NW Quad 6.8
STA 49+72 TO STA 49+75	NW Quad 5.0
STA 49+65 TO STA 49+74	NE Quad 12.7
STA 50+37 TO STA 50+46	SW Quad 12.5
STA 50+26 TO STA 50+29	SE Island 5.0
STA 50+42 TO STA 50+46	SE Quad 6.0
STA 50+62 TO STA 50+69	SE Quad 7.6
TOTAL	66.0

SIDEWALK REMOVAL

LOCATION	AVG LENGTH	WIDTH	AREA (SQ FT)
POPLAR			
STA 50+40 TO STA 50+56	SW Quad 12.7	4	50.8
IL 29			
STA 833+80 TO STA 833+96	NE Quad 12.7	4	50.8
TOTAL			101.6

MEDIAN REMOVAL

LOCATION	AREA (SQ FT)
POPLAR	
STA 49+63 TO STA 49+69	North Median 34.0
IL 29	
STA 833+04 TO STA 833+09	West Median 34.4
STA 833+85 TO STA 833+90	East Median 40.3
STA 833+80 TO STA 833+85	SE Quad Island 43.3
TOTAL	152.0

RELOCATE SIGN PANEL

EXISTING LOCATION	PROPOSED LOCATION	AREA (SQ FT)
STA 49+64 RT	STA 49+58 RT	5.2
STA 49+66 LT	STA 49+61 LT	5.2
TOTAL		10.4

PAINT PAVEMENT MARKING- LINE 24"

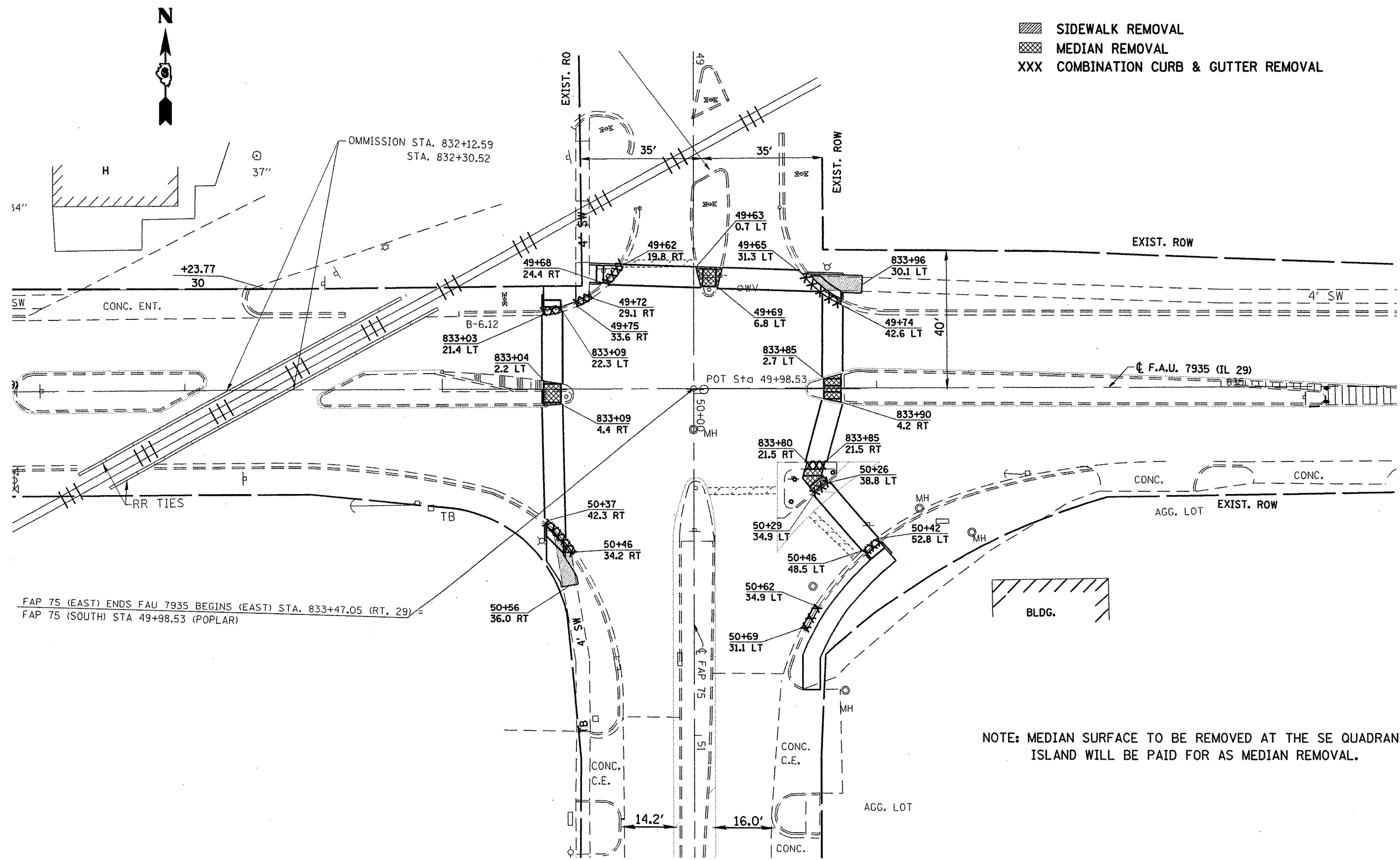
LOCATION	DIRECTION	DESCRIPTION	LENGTH (FOOT)
POPLAR			
49+57	SB	STOP BAR	17.3
50+27	NB	STOP BAR	20.0
50+33	TURN LN EB	STOP BAR	22.2
IL 29			
833+00	WB	RR STOP BAR	18.6
TOTAL			78.1

PAINT PAVEMENT MARKING- LINE 6"

LOCATION	COLOR	DIRECTION	DESCRIPTION	LENGTH (FOOT)
POPLAR				
49+69	WHITE	SBL	CROSSWALK	47.2
49+69	WHITE	NBL	CROSSWALK	52.1
IL 29				
833+09	WHITE	EB	CROSSWALK	71.1
833+09	WHITE	WB	CROSSWALK	40.2
833+84	WHITE	EB	CROSSWALK	36.0
833+84	WHITE	WB	CROSSWALK	43.8
833+81	WHITE	TURN LN EB	CROSSWALK	43.2
TOTAL				333.6

WORK ZONE PAVEMENT MARKING REMOVAL

LOCATION	LENGTH	WIDTH	AREA (SQ FT)
STOP BARS			
STA 49+63	North Stop Bar 20.1	2	40.2
STA 50+34	SE Stop Bar 21.9	2	43.8
STA 833+05	West Stop Bar 19.1	2	38.2
EDGE LINES			
North Median	12.4	0.4	5.0
West Median	12.2	0.4	4.9
East Median	12.4	0.4	5.0
SE Island	15	0.4	6.0
TOTAL			143.0



[Diagonal Hatching] SIDEWALK REMOVAL
 [Cross-hatching] MEDIAN REMOVAL
 XXX COMBINATION CURB & GUTTER REMOVAL

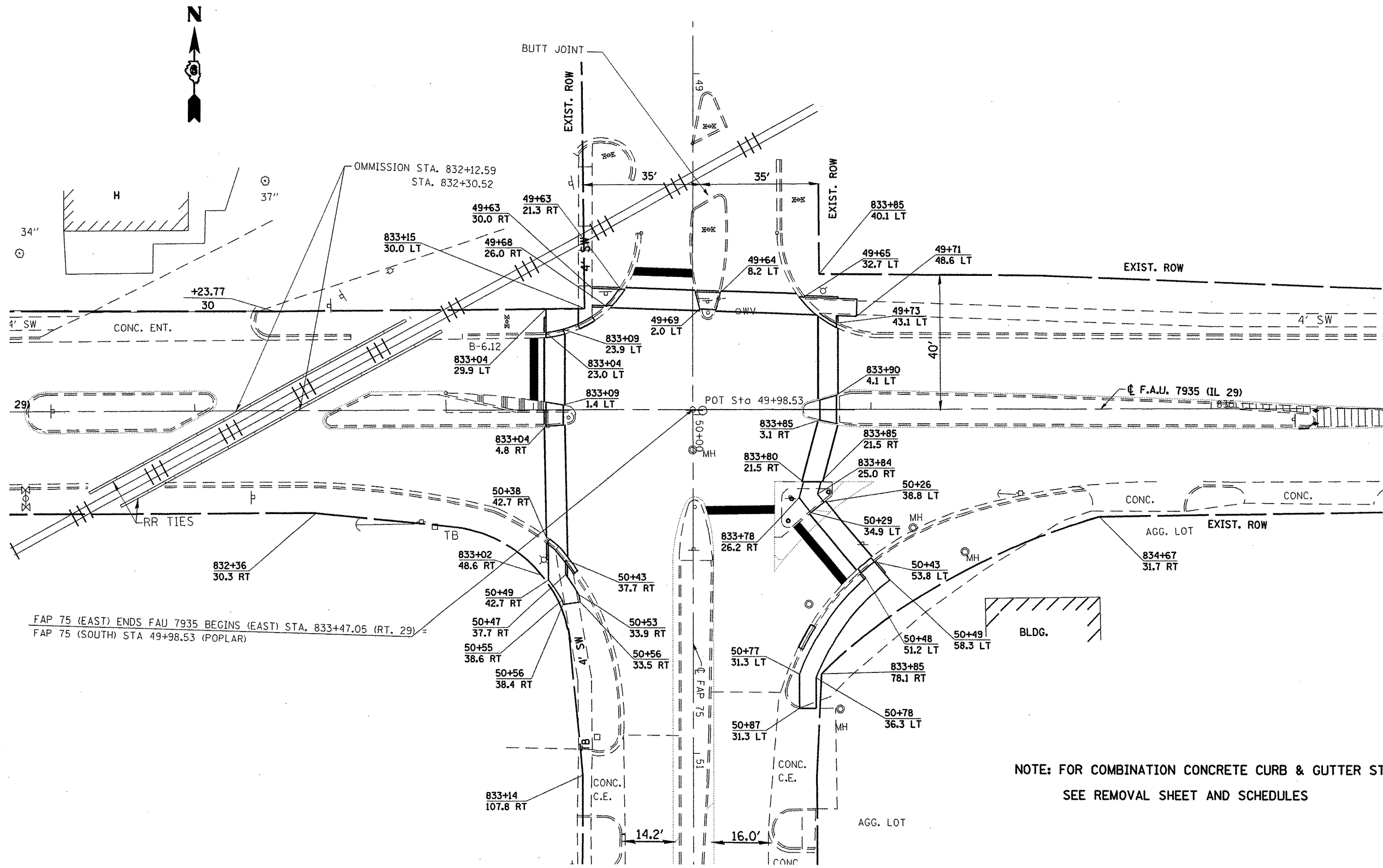
NOTE: MEDIAN SURFACE TO BE REMOVED AT THE SE QUADRANT ISLAND WILL BE PAID FOR AS MEDIAN REMOVAL.

FILE NAME =	USER NAME = laughlinr1	DESIGNED -	REVISED -
c:\pwork\PWIDOT\LAUGHLINR1\0183474\072064-shr-removal.dgn		DRAWN -	REVISED -
PLOT SCALE = 30.0000' / IN.		CHECKED -	REVISED -
PLOT DATE = Mar-19-2010 02:39:24PM		DATE	REVISED

STATE OF ILLINOIS
DEPARTMENT OF TRANSPORTATION

REMOVAL SHEET			
FAP 75 (IL 29)			
SCALE: 1/15	SHEET NO.	OF SHEETS	STA. TO STA.

F.A.P. RTE.	SECTION	COUNTY	TOTAL SHEETS	SHEET NO.
75	(22)N1	CHRISTIAN	8	5
CONTRACT NO. 72064				
ILLINOIS FED. AID PROJECT				



OMMISSION STA. 832+12.59
 STA. 832+30.52

+23.77
 30
 4' SW
 CONC. ENT.

29

RR TIES

FAP 75 (EAST) ENDS FAU 7935 BEGINS (EAST) STA. 833+47.05 (RT. 29) =
 FAP 75 (SOUTH) STA 49+98.53 (POPLAR)

NOTE: FOR COMBINATION CONCRETE CURB & GUTTER STATIONS,
 SEE REMOVAL SHEET AND SCHEDULES

FILE NAME =	USER NAME = laughlinr	DESIGNED -	REVISED -
c:\pwwork\p\WIDOT\LAUGHLINR\083474\072064-shr-plan.dgn		DRAWN -	REVISED -
PLOT SCALE = 30.0000 / IN.		CHECKED -	REVISED -
PLOT DATE = Mar-19-2010 02:42:50PM		DATE -	REVISED -

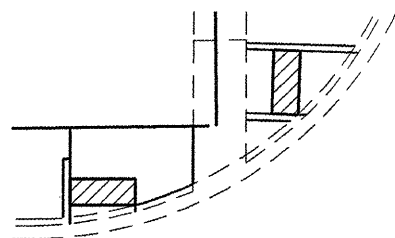
**STATE OF ILLINOIS
 DEPARTMENT OF TRANSPORTATION**

PLAN SHEET FAP 75 (IL 29)			
SCALE: 1/15	SHEET NO. OF SHEETS	STA.	TO STA.

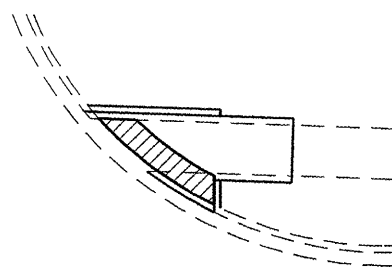
F.A.P. RTE. 75	SECTION (22)N,J	COUNTY CHRISTIAN	TOTAL SHEETS 8	SHEET NO. 6
CONTRACT NO. 72064				
ILLINOIS FED. AID PROJECT				

 DETECTABLE WARNING

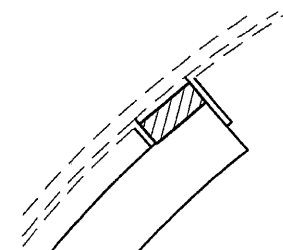
NW QUAD



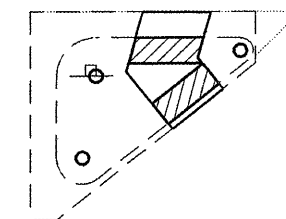
NE QUAD



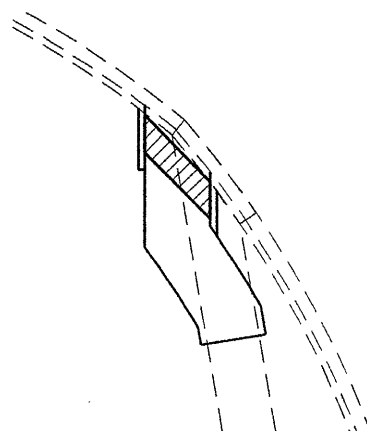
SE QUAD



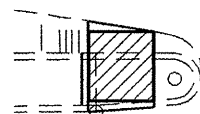
SE ISLAND



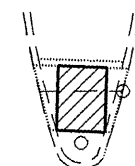
SW QUAD



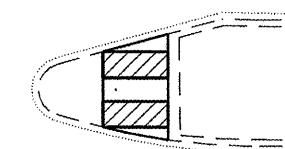
WEST MEDIAN



NORTH MEDIAN

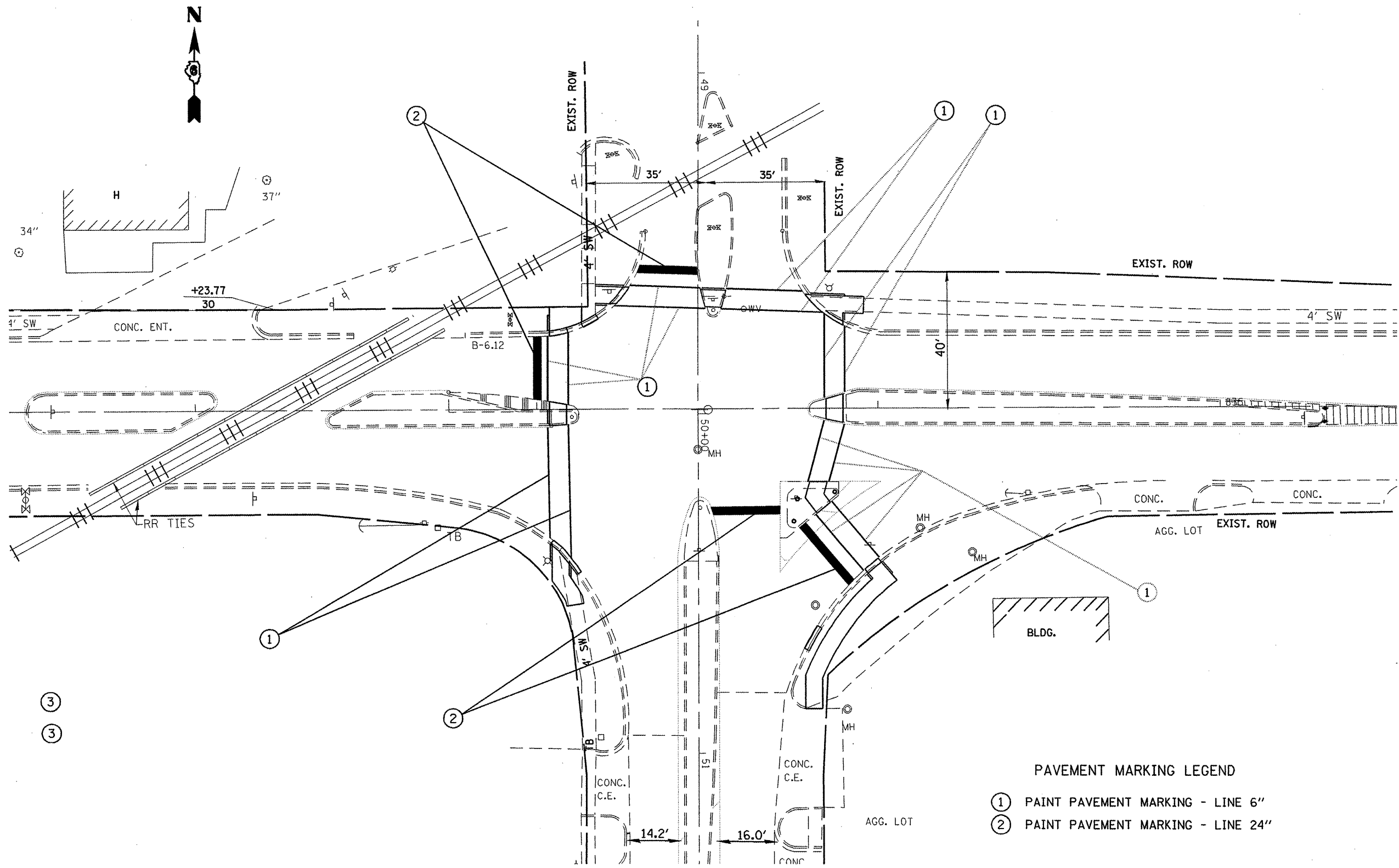


EAST MEDIAN



NOTE: SEE SCHEDULE OF QUANTITIES FOR DIMENSIONS

FILE NAME = e:\pwork\PKIDOT\LAUHL\INRL\0103474\0372064-shd-details.dgn	USER NAME = laughtin1	DESIGNED -	REVISED -	STATE OF ILLINOIS DEPARTMENT OF TRANSPORTATION	DETECTABLE WARNINGS FAP 75 (IL 29)				F.A.P. RTE.	SECTION	COUNTY	TOTAL SHEETS	SHEET NO.		
		DRAWN -	REVISED -		SCALE:	SHEET NO.	OF	SHEETS	STA.	TO STA.	75	(22N,I)	CHRISTIAN	8	7
		CHECKED -	REVISED -						CONTRACT NO. 72D64						
		DATE -	REVISED -		ILLINOIS FED. AID PROJECT										



- PAVEMENT MARKING LEGEND
- ① PAINT PAVEMENT MARKING - LINE 6"
 - ② PAINT PAVEMENT MARKING - LINE 24"

FILE NAME =
 c:\pwwork\pwwid\l\LAUHLIN\l\d0183474\d072064-ehh-pmk.dgn

USER NAME = lauhlirr1
 72064-ehh-pmk.dgn
 PLOT SCALE = 30.0000' / IN.
 PLOT DATE = Mar-19-2010 02:39:30PM

DESIGNED -	REVISD -
DRAWN -	REVISD -
CHECKED -	REVISD -
DATE -	REVISD -

**STATE OF ILLINOIS
 DEPARTMENT OF TRANSPORTATION**

**PAVEMENT MARKINGS
 FAP 75 (IL 29)**

SCALE: 1:15 SHEET NO. OF SHEETS STA. TO STA.

F.A.P. RTE.	SECTION	COUNTY	TOTAL SHEETS	SHEET NO.
75	122N,J	CHRISTIAN	8	8
CONTRACT NO. 72D64				
ILLINOIS FED. AID PROJECT				