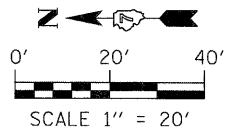
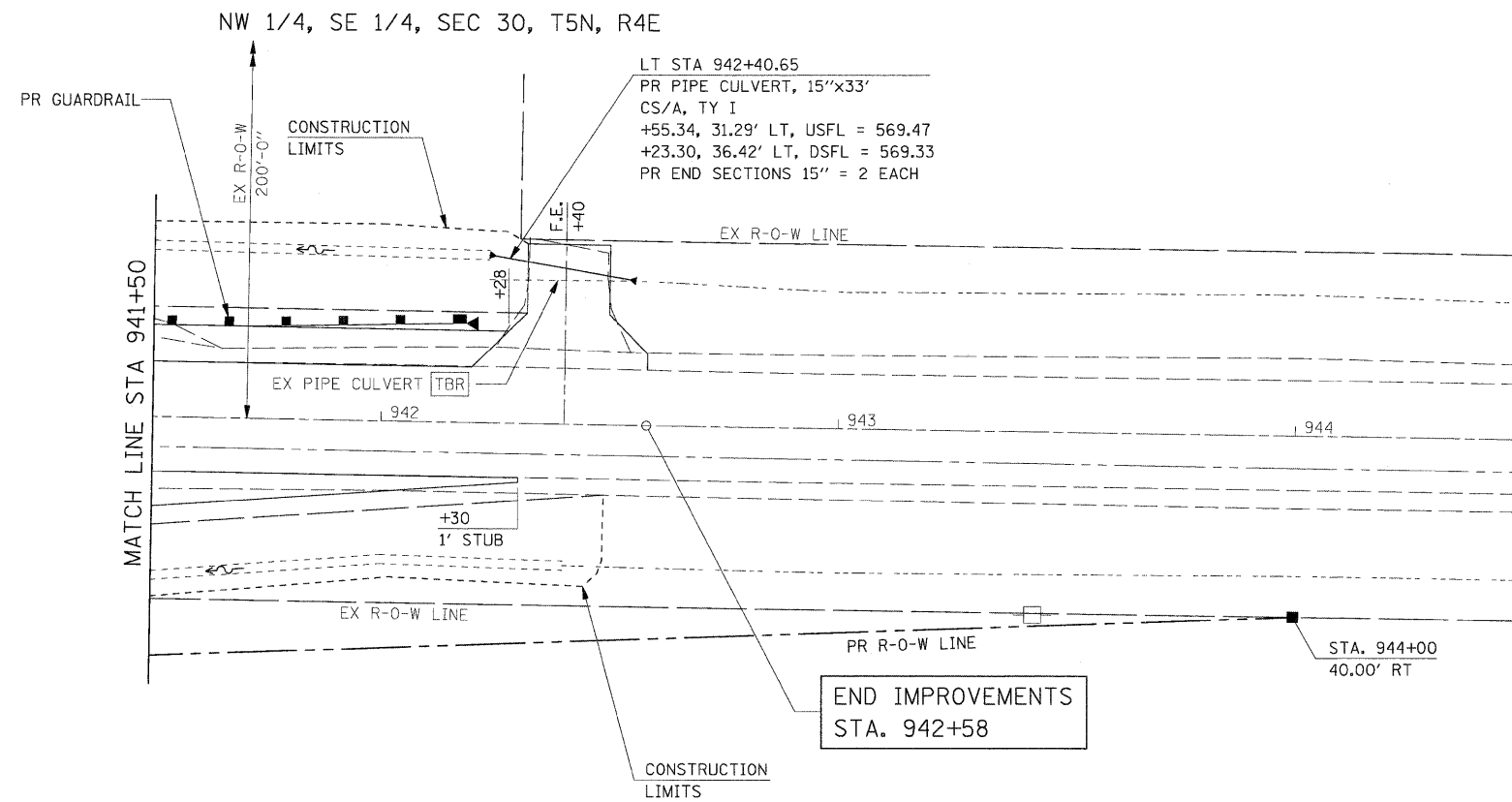


PLAN	SURVEYED	DATE
	PLOTTED	BY
	GRADES CHECKED	
	STRUCTURE NOTATIONS CHKD	
	NOTE BOOK NO.	
	CADD FILE NAME	

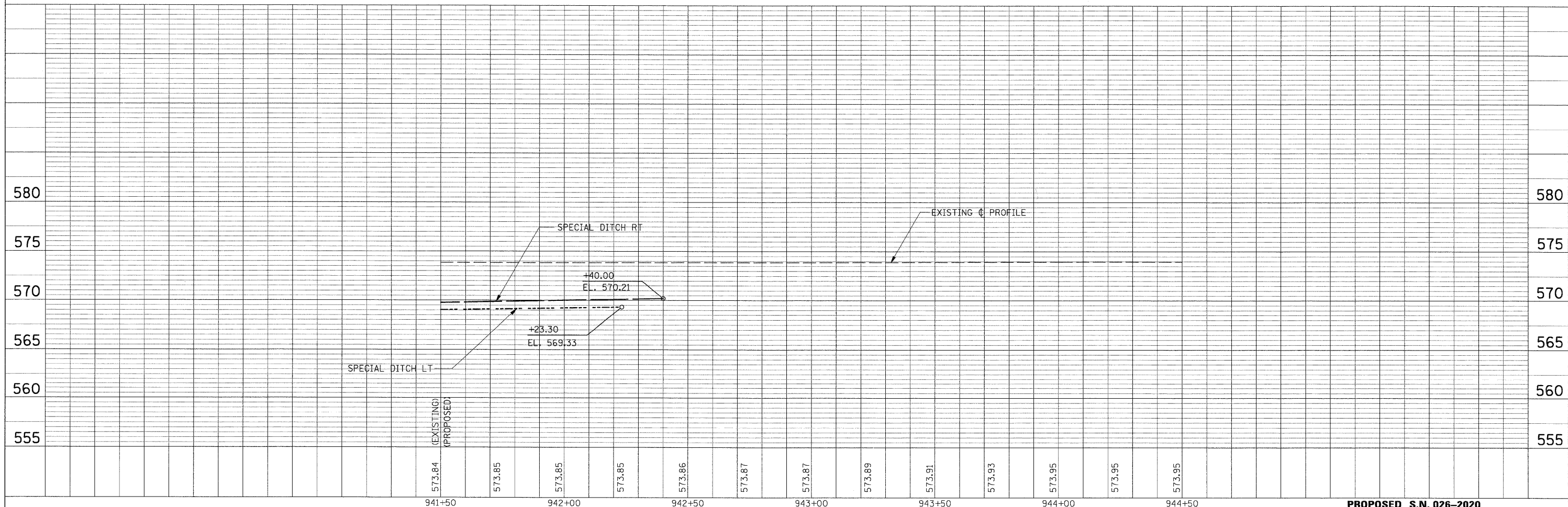
PROFILE	SURVEYED	DATE
	PLOTTED	BY
	GRADES CHECKED	
	STRUCTURE NOTATIONS CHKD	
	NOTE BOOK NO.	
	CADD FILE NAME	



NE 1/4, SW 1/4, SEC 30, T5N, R4E

**LEGEND**

EX PAVEMENT REMOVAL



FILE NAME = G:\S00026-5\CADD Sheets\0774110-sht-PLNPRF03.dgn	USER NAME = IE Consultants	DESIGNED -	REVISED -	<b>STATE OF ILLINOIS DEPARTMENT OF TRANSPORTATION</b>	<b>PLAN &amp; PROFILE</b>	F.A. RTE.	SECTION	COUNTY	TOTAL SHEETS	SHEET NO.
		DRAWN -	REVISED -			* 114B-1(1) & 114B-1(2)	FAYETTE	54	14	
		CHECKED -	REVISED -			* F.A.P. RTE. 750, F.A.S. RTE. 719	CONTRACT NO. 74110			
		DATE -	REVISED -			FED. ROAD DIST. NO.	ILLINOIS FED. AID PROJECT			