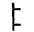
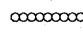
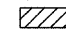
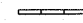




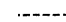
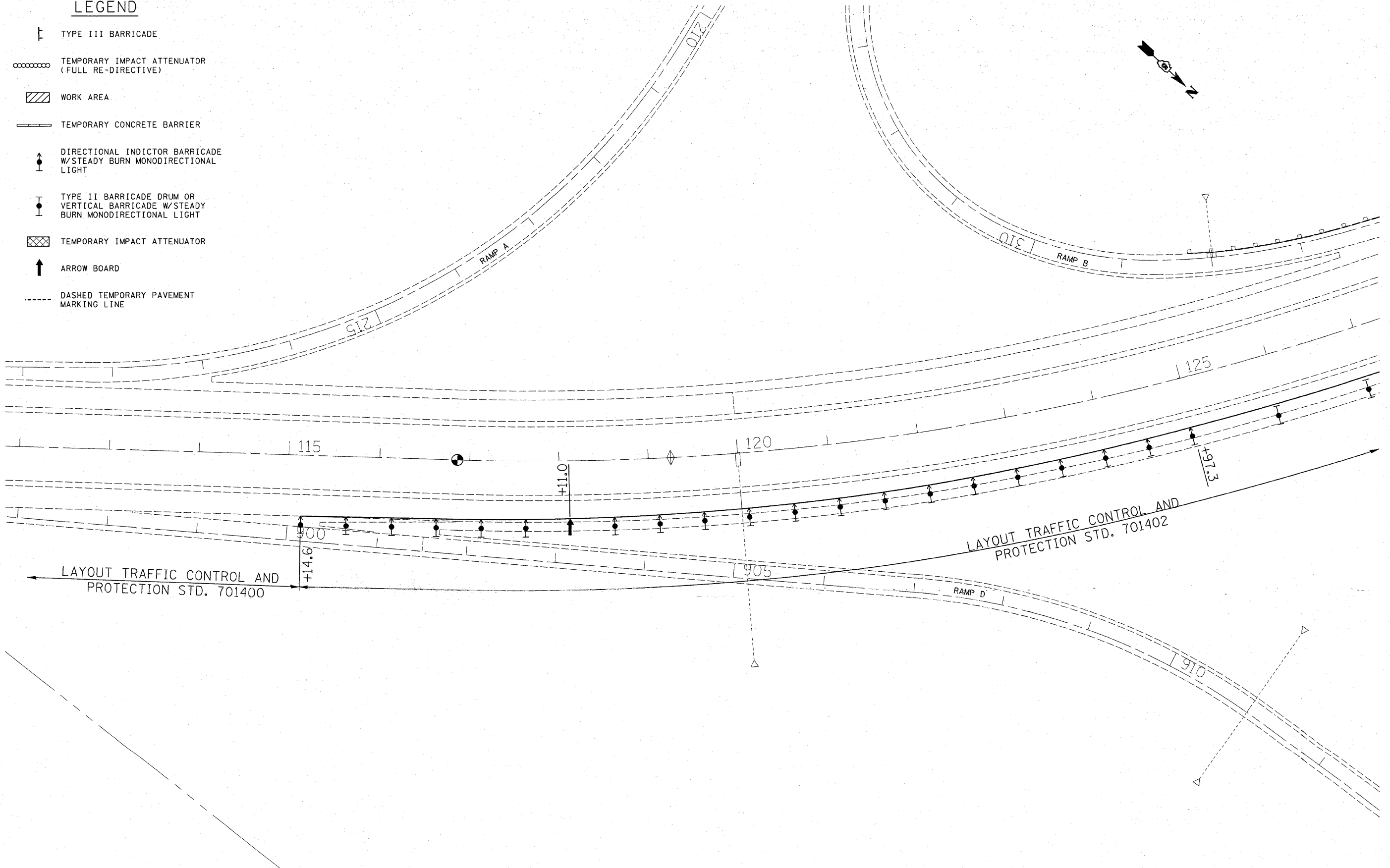


# LEGEND

-  TYPE III BARRICADE
-  TEMPORARY IMPACT ATTENUATOR (FULL RE-DIRECTIVE)
-  WORK AREA
-  TEMPORARY CONCRETE BARRIER
-  DIRECTIONAL INDICATOR BARRICADE W/STEADY BURN MONODIRECTIONAL LIGHT
-  TYPE II BARRICADE DRUM OR VERTICAL BARRICADE W/STEADY BURN MONODIRECTIONAL LIGHT
-  TEMPORARY IMPACT ATTENUATOR
-  ARROW BOARD
-  DASHED TEMPORARY PAVEMENT MARKING LINE



FILE NAME =	USER NAME = swartzrw	DESIGNED -	REVISED -	<b>STATE OF ILLINOIS DEPARTMENT OF TRANSPORTATION</b>	<b>STAGE 2 TRAFFIC CONTROL</b>			F.A.P. RTE. 322	SECTION (58-20)RS	COUNTY MACON	TOTAL SHEETS 151	SHEET NO. 52
or:\pw_work\PWIDOT\SWARTZRW\d0138944\d7	4150-sh2-stage2trafficocontrol.dgn	DRAWN -	REVISED -		SCALE: 50    SHEET NO. 1 OF 6 SHEETS    STA. 112+00 TO STA. 127+00			CONTRACT NO. 74150				
	PLOT SCALE = 50,0000' / 1" IN.	CHECKED -	REVISED -		ILLINOIS FED. AID PROJECT							
	PLOT DATE = 3/17/2018	DATE -	REVISED -									