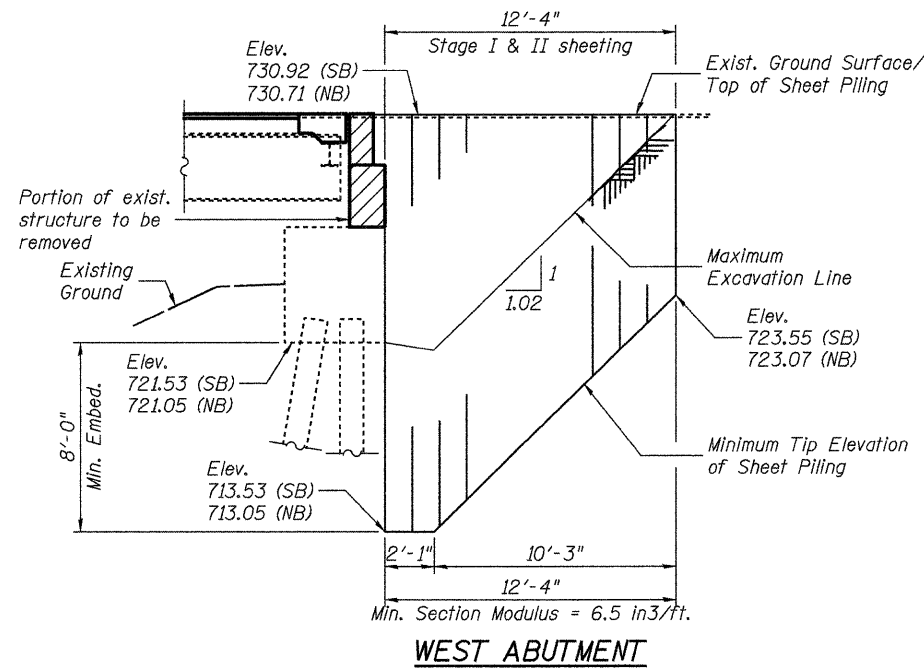
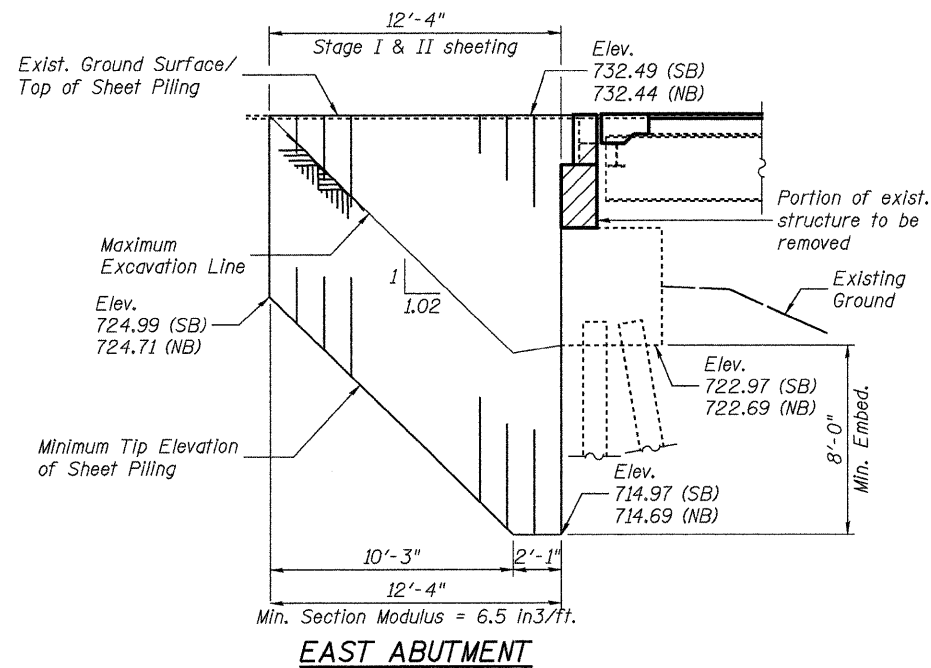


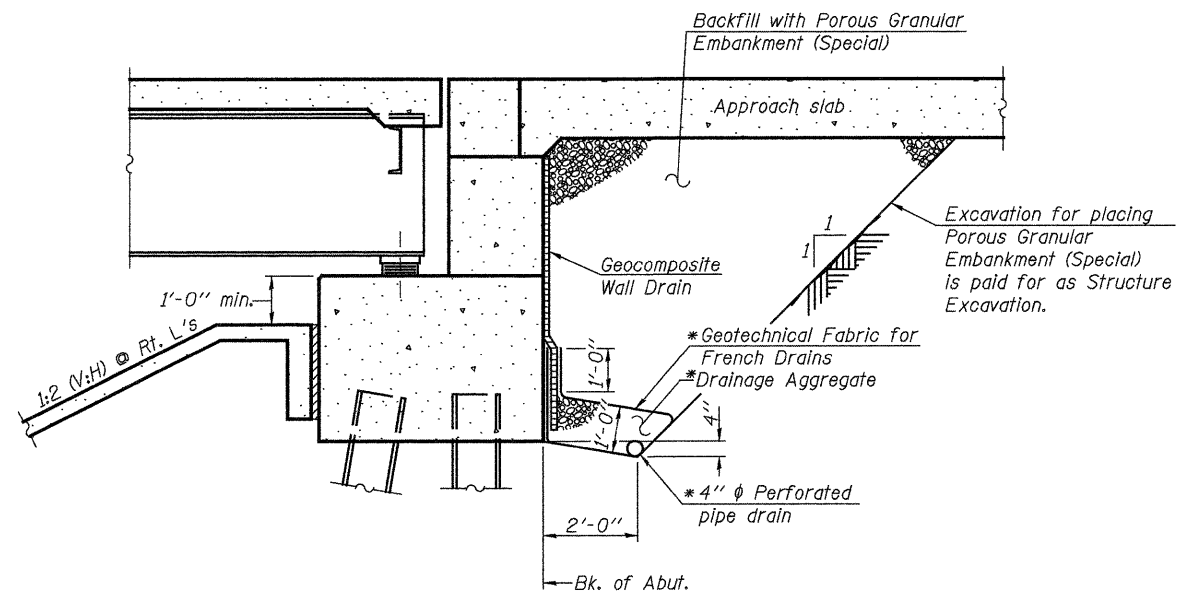
STATE OF ILLINOIS  
DEPARTMENT OF TRANSPORTATION



**TEMPORARY SHEET PILING DETAILS**

(Slopes and horizontal dimensions are measured parallel to  $\perp$  roadway)

If the Contractor chooses to alter the temporary cantilevered sheet piling design requirements shown on plans, a design submittal including plan details and calculations will be required for review and acceptance by the Engineer.



**SECTION THRU PILE SUPPORTED  
STUB ABUTMENT**  
(Horiz. dim. @ Rt. L's)

\*Included in the cost of Pipe Underdrains for Structures.

Note:  
All drainage system components shall extend parallel to the abutment back wall until they intersect the wingwalls. The pipe shall extend under the wingwall, then to the toe of slope. The pipes shall drain into concrete headwalls. (See Article 601.05 of the Standard Specifications and Highway Standard 601101).

**TEMPORARY SHEET PILING  
STRUCTURE NO. 058-0101(NB) & 0102(SB)**

SHEET 2 OF 26	F.A.P. RTE.	SECTION	COUNTY	TOTAL SHEETS	SHEET NO.
	322	(58-20)RS	MACON	151	67
		STA. 133+62.02	CONTRACT NO. 74150		
		FED. ROAD DIST. NO.	ILLINOIS FED. AID PROJECT		

**JD** Johnson, Depp & Quisenberry  
CONSULTING ENGINEERS  
Springfield, Illinois

DESIGNED: JDQ	DRAWN: SJS
CHECKED: DCD	CHECKED: DCD

FILE: J:\JDD\10177 IL-DTVM#8 US51 Bridge Repair\1-US51bus-ICRR\058010-74150-002-stageconstr.dgn

USER: DCD

DATE: 04/09/2010 12:21:07