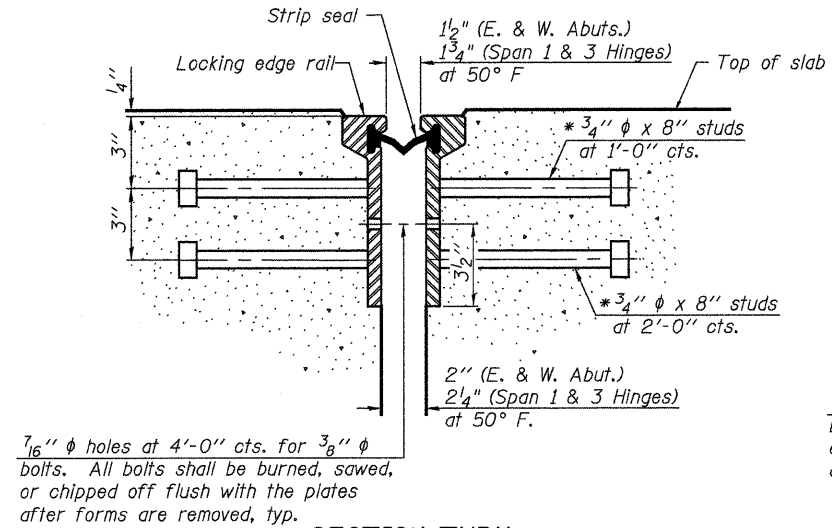
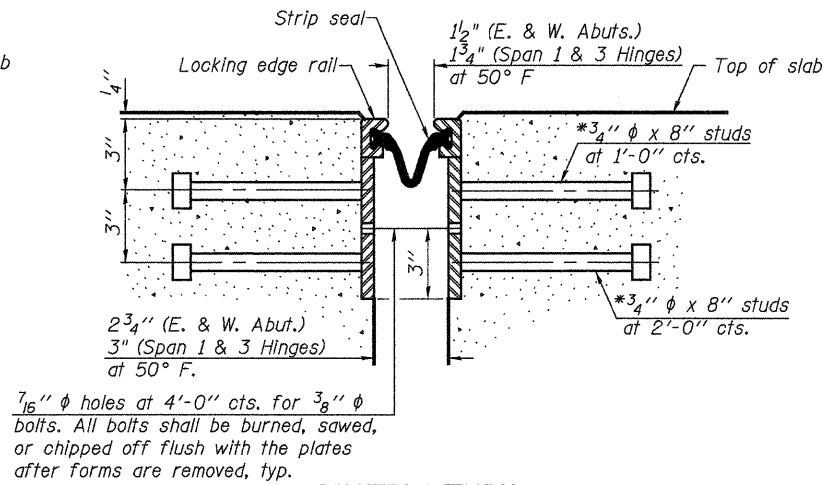


* Granular or solid flux filled headed studs conforming to Article 1006.32 of the Std. Specs., automatically end welded.

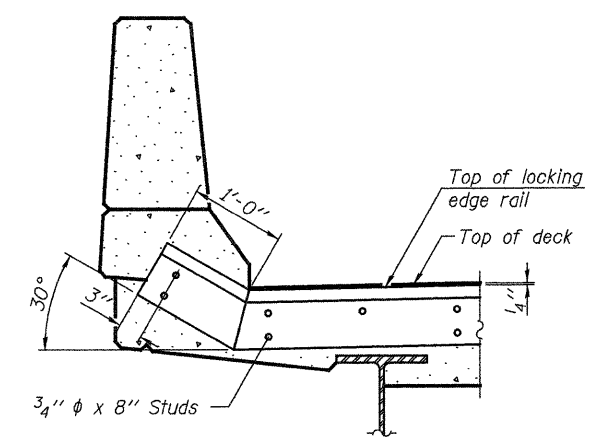
STATE OF ILLINOIS
DEPARTMENT OF TRANSPORTATION



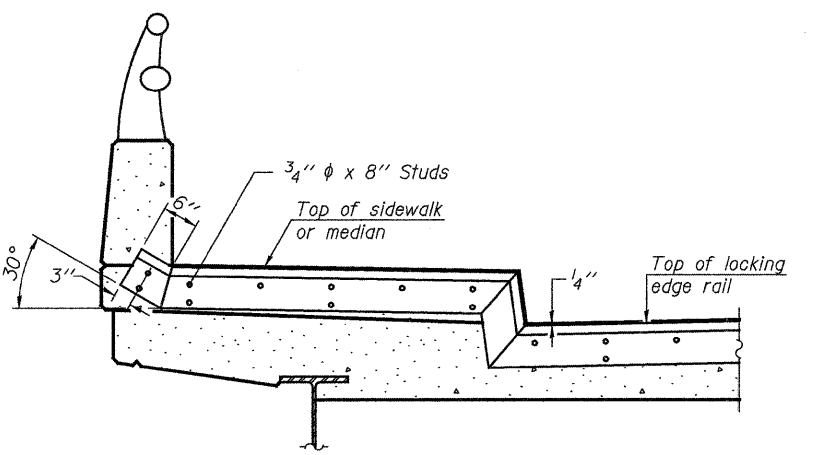
SECTION THRU ROLLED RAIL JOINT



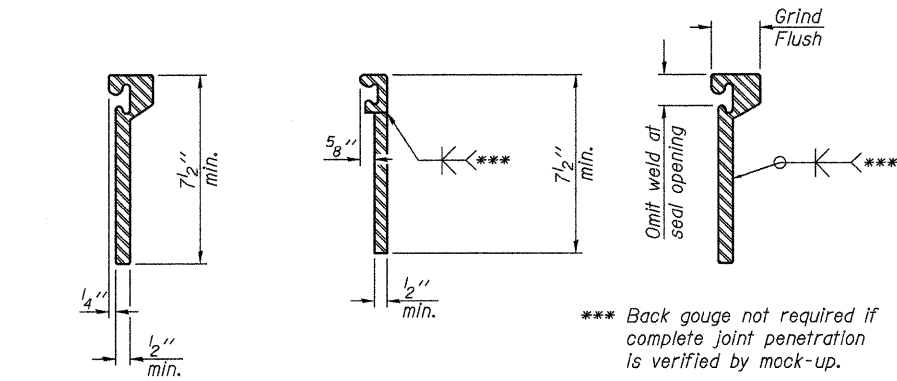
SECTION THRU WELDED RAIL JOINT



AT PARAPET
See Section A-A for end treatment of skew > 30°.

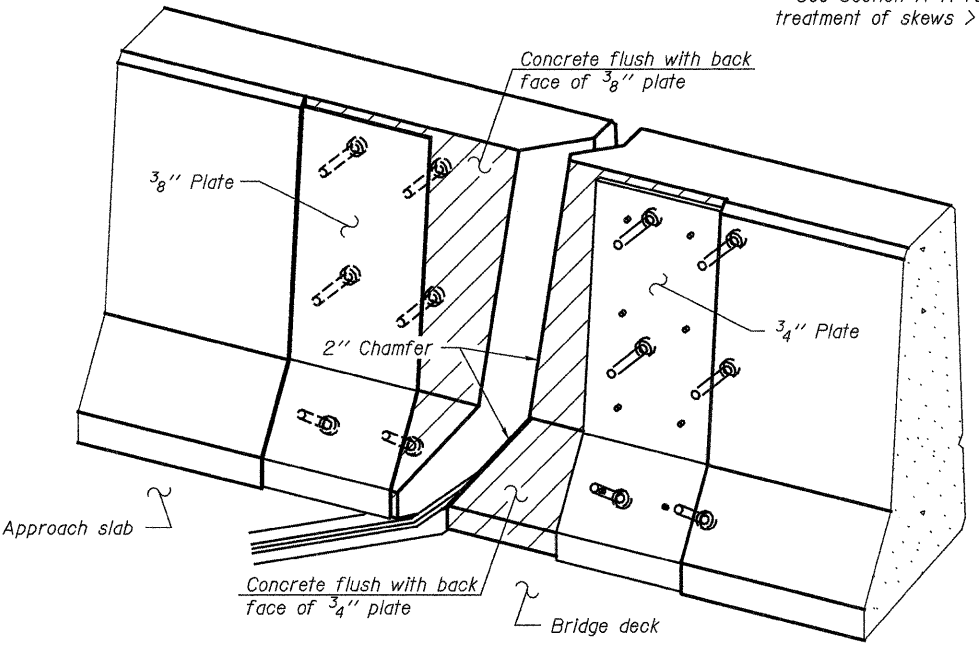


AT SIDEWALK OR MEDIAN
Shorter plates with a single row of studs at 12 inch centers may be necessary on medians which are shallower than 9 inch. See manufacturer's recommendation.



ROLLLED EXTRUDED RAIL WELDED RAIL

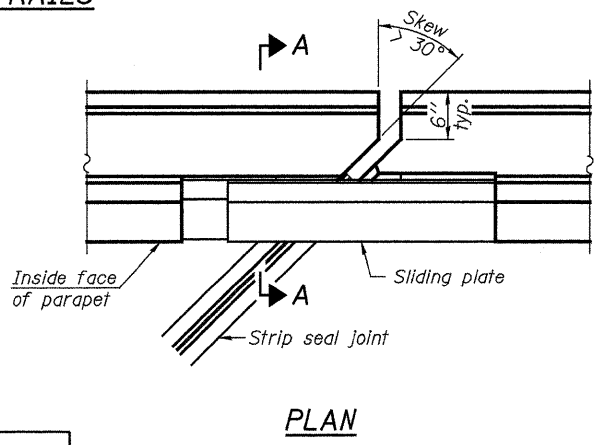
LOCKING EDGE RAIL SPLICE
The inside of the locking edge rail groove shall be free of weld residue.
Rolled rail shown, welded rail similar.



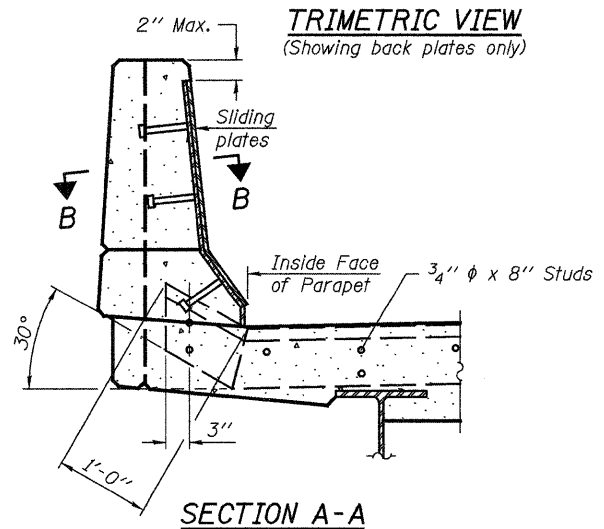
TYPICAL END TREATMENTS

Notes:
The strip seal shall be made continuous and shall have a minimum thickness of 1/4 inch. The configuration of the strip seal shall match the configuration of the Locking Edge Rails. Open or "webbed" strip seal gland configurations are not permitted. The gland shall be sized for a maximum rated movement of 4 inches.
The Locking Edge Rails depicted are conceptual only, except for the minimum dimensions shown. The actual configuration of the Locking Edge Rails and matching strip seal may vary from manufacturer to manufacturer. Flanged edge rails will not be allowed. Locking Edge Rails may be spliced at slope discontinuities.
The manufacturer's recommended installation methods shall be followed.
The joint opening and deck dimensions detailed on the superstructure are based on a rolled rail expansion joint. If the Contractor elects to use the welded rail expansion joint, the opening and deck dimensions shall be modified according to the dimensions detailed on this sheet. Required modifications shall be made at no additional cost to the State.
All steel components shall be galvanized after fabrication according to Article 520.03 of the Standard Specifications.
Maximum space between rail segments at stage lines shall be 3/16 inch, sealed with a suitable sealant.

LOCKING EDGE RAILS

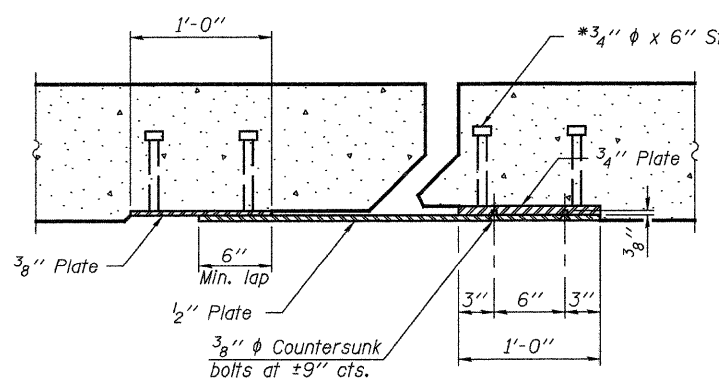


PLAN



SECTION A-A

POINT BLOCK DETAILS
(for skew > 30°)



SECTION B-B

BILL OF MATERIAL

Item	Unit	SB Bridge	NB Bridge
Preformed Joint Strip Seal	Foot	178	213

PREFORMED JOINT STRIP SEAL
STRUCTURE NO. 058-0101(NB) & 0102(SB)

SHEET NO.	F.A.P. RTE.	SECTION	COUNTY	TOTAL SHEETS	SHEET NO.
11 OF 26	322	(58-20)RS	MACON	151	76
		STA. 133+62.02	CONTRACT NO. 74150		
		FED. ROAD DIST. NO.	ILLINOIS FED. AID PROJECT		

JD Johnson, Depp & Quisenberry
CONSULTING ENGINEERS
Springfield, Illinois

DESIGNED: JDQ	DRAWN: PTR
CHECKED: DCD	CHECKED: DCD

EJ-SSJ 11-1-09

FILE: J:\JDD\10177 IL-DTVM#8 USS51Bridge Repair\1-1551ibus-ICRR\058010-74150-011-str1\psed.dgn
USER: DCD
DATE: 04/09/2010 12:26:31