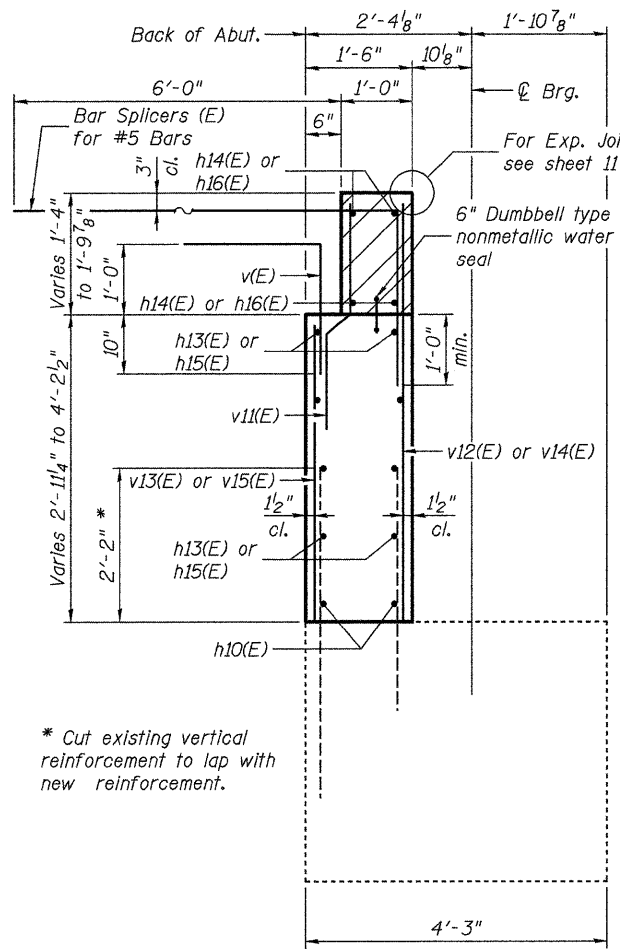
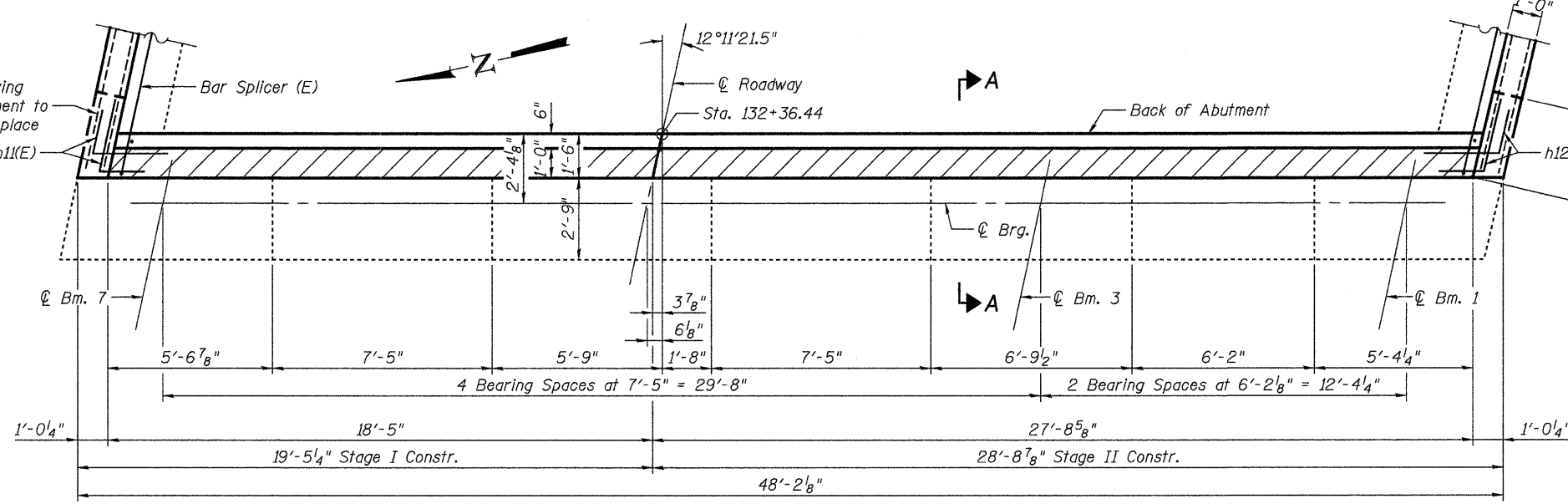


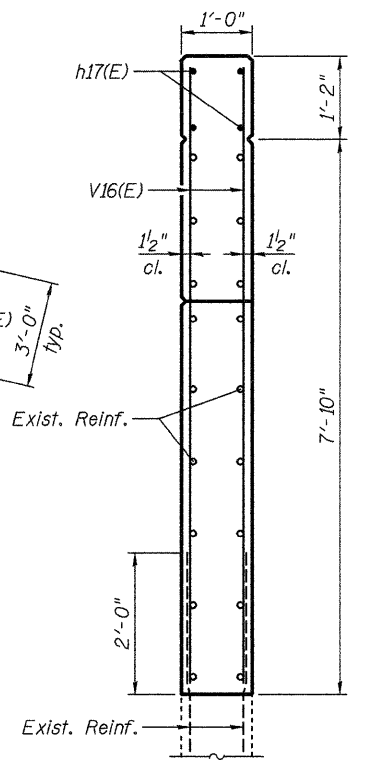
STATE OF ILLINOIS  
DEPARTMENT OF TRANSPORTATION



SECTION A-A



PLAN



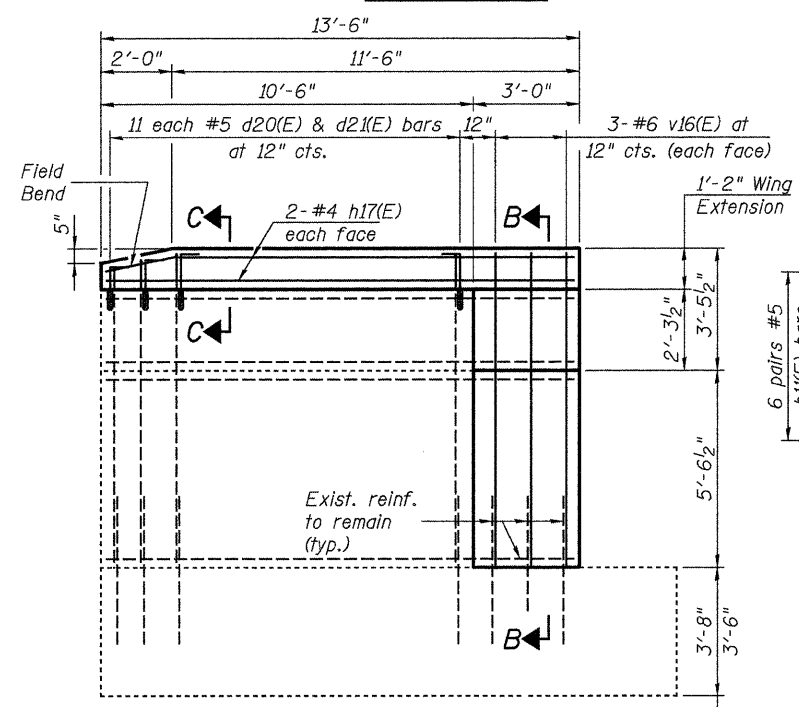
SECTION B-B

Hatched area to be poured after superstructure false work has been removed. Quantity of concrete included with Concrete Superstructure.

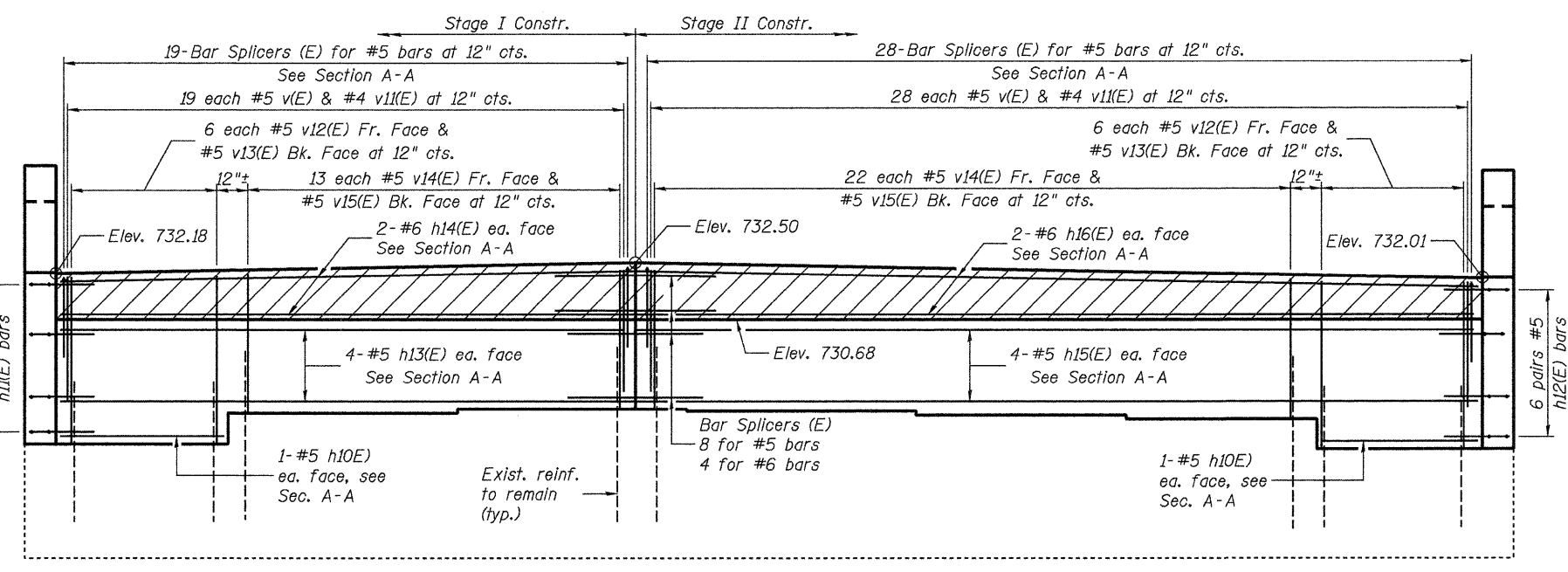
ABUTMENT  
BILL OF MATERIAL

Bar	No.	Size	Length	Shape
d20(E)	22	#5	2'-7"	□
d21(E)	22	#5	2'-0"	L
h10(E)	4	#5	6'-0"	—
h11(E)	12	#5	4'-0"	L
h12(E)	12	#5	4'-0"	L
h13(E)	8	#5	19'-0"	—
h14(E)	4	#6	18'-0"	—
h15(E)	8	#5	28'-4"	—
h16(E)	4	#6	27'-4"	—
h17(E)	8	#4	13'-0"	—
v(E)	47	#5	3'-9"	L
v11(E)	47	#4	3'-2"	L
v12(E)	12	#5	5'-4"	—
v13(E)	12	#5	3'-10"	—
v14(E)	35	#5	4'-5"	—
v15(E)	35	#5	2'-9"	—
v16(E)	12	#6	8'-10"	—
Structure Excavation			Cu. Yd.	89
Concrete Removal			Cu. Yd.	11.5
Concrete Structures			Cu. Yd.	12.1
Concr. Superstructure			Cu. Yd.	2.8
Reinforcement Bars, Epoxy Coated			Pound	1790

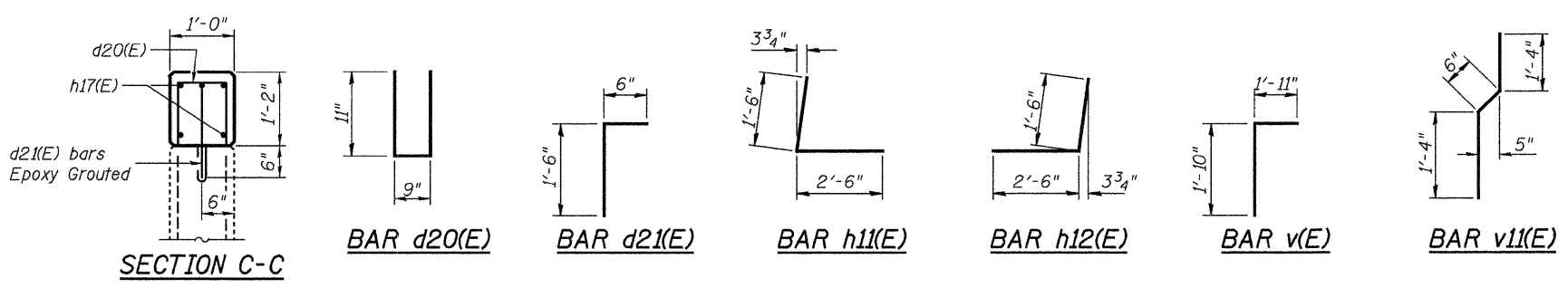
For details of Bar Splicers, see sheet 25 of 26.



WING ELEVATION



ELEVATION



SECTION C-C

**JD Johnson, Depp & Quisenberry**  
CONSULTING ENGINEERS  
Springfield, Illinois

DESIGNED: JDQ DRAWN: P. Ray  
CHECKED: DCD CHECKED: DCD

EAST ABUTMENT (SB)  
STRUCTURE NO. 058-0101(NB) & 0102(SB)

SHEET 18 OF 26	F.A.P. RTE. 322	SECTION (58-20)RS	COUNTY MACON	TOTAL SHEETS 151	SHEET NO. 83
		STA. 133+62.02	CONTRACT NO. 74150		
		FED. ROAD DIST. NO.	ILLINOIS FED. AID PROJECT		

DATE: 04/09/2010 12:24:55 FILE: J:\JDO\101077 IL-07VY#8 USB\Bridg Repair\US51bus-ICRY\0580101-74150-08-abut-SB.dgn USER: DCD